



CONSTRUCTION MATERIAL

- MAIN FLOOR - CONCRETE
- MAIN WALLS - CONCRETE BLOCK
- MAIN CEILING - CORRUGATED METAL

LEGEND

- (with circle) RANDOM GENERATED START SAMPLE POINT
- TRIANGULAR GRID SYSTEMATIC SAMPLE POINT
- ADJUSTED TRIANGULAR GRID SYSTEMATIC SAMPLE POINT

SURVEY SUBUNIT 13

L = 6.2m
 A = 540m²
 N = 16 SAMPLES

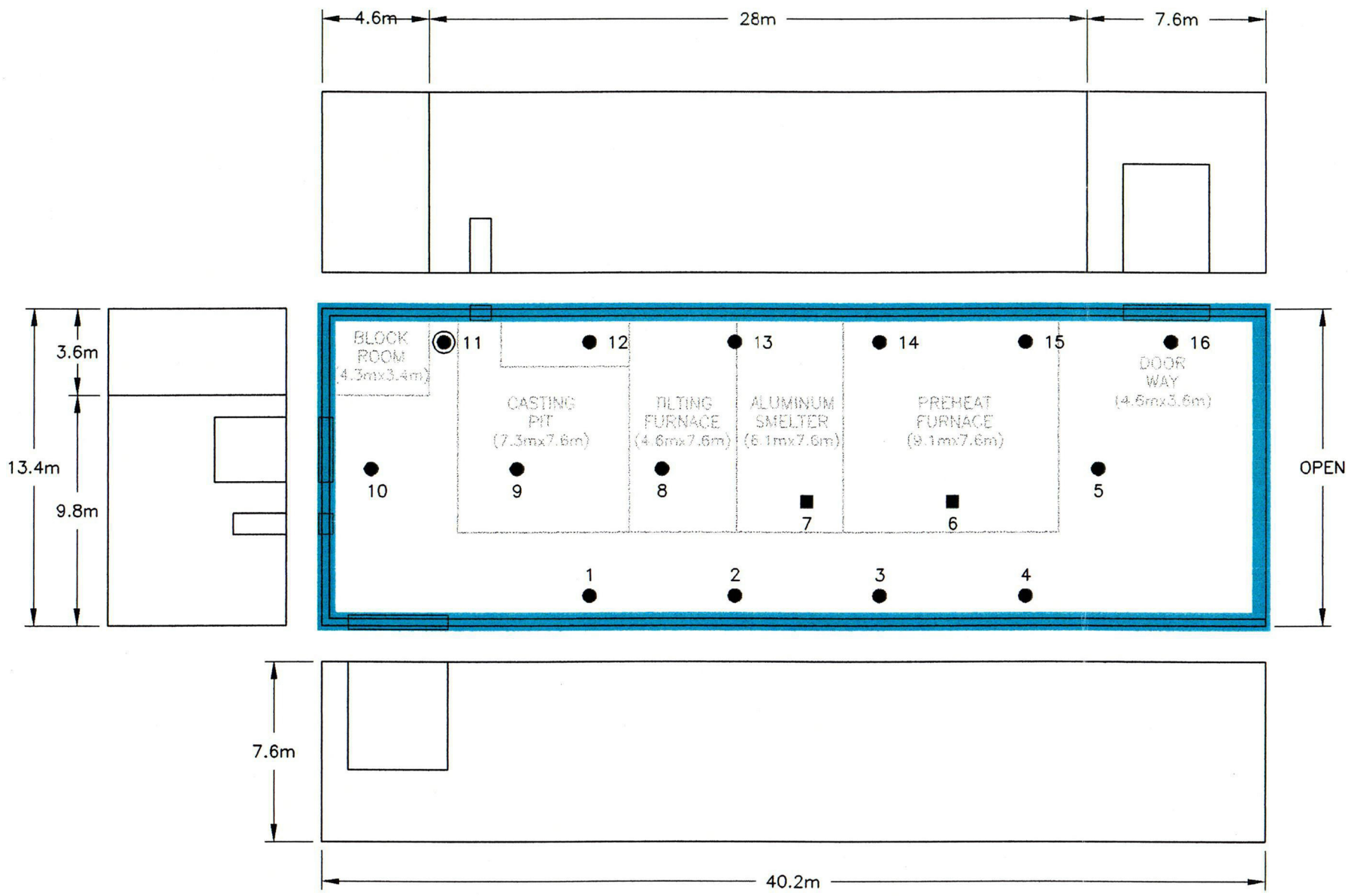
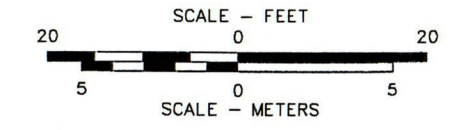
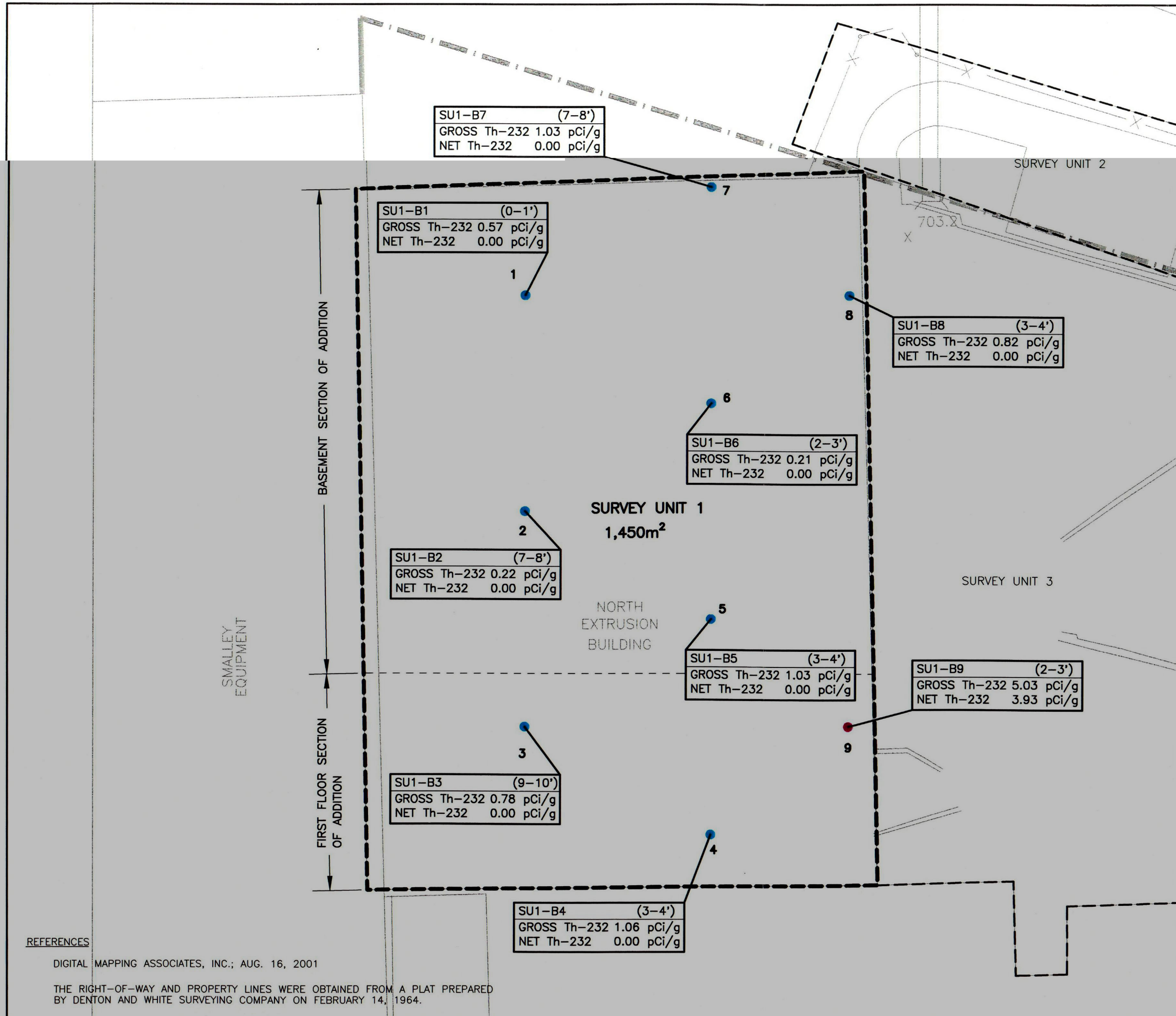


FIGURE 4A-7
 STRUCTURAL SURFACES DISCRETE SAMPLE POINTS
 CRUSHER ADDITION BUILDING
 FORMER KAISER ALUMINUM
 SPECIALTY PRODUCTS FACILITY
 TULSA, OKLAHOMA

PREPARED FOR
KAISER ALUMINUM & CHEMICAL CORPORATION
 BATON ROUGE, LOUISIANA

APPROVED <i>RFO 3/02</i>	
CHECKED <i>ACL 3/02</i>	
DRAWN <i>DEB 2/21/02</i>	
DRAWING NUMBER 5427282	Earth Sciences Consultants, Inc.



NOTE
BACKGROUND VALUE OF 1.1 pCi/g Th-232
SUBTRACTED FROM GROSS Th-232 ANALYTICAL
RESULT.

LEGEND

- SAMPLE POINT WITH NET Th-232 ACTIVITY CONCENTRATION ≤ 3.0 pCi/g
- SAMPLE POINT WITH NET Th-232 ACTIVITY CONCENTRATION > 3.0 pCi/g
- SURVEY UNIT BOUNDARY
- - - - - APPROXIMATE RIGHT-OF-WAY

SAMPLE ID	(DEPTH)	ANALYTICAL RESULTS
GROSS Th-232		
NET Th-232		

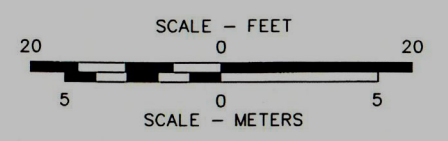


FIGURE 4A-9
TH-232 ANALYTICAL RESULTS SOIL CORE SAMPLES
SURVEY UNIT 1
FORMER KAISER ALUMINUM
SPECIALTY PRODUCTS FACILITY
TULSA, OKLAHOMA

PREPARED FOR
KAISER ALUMINUM & CHEMICAL CORPORATION
BATON ROUGE, LOUISIANA

APPROVED *RFD 5/02*
CHECKED *ASL 5/02*
DRAWN *DEB 11/05/01*

DRAWING NUMBER
5427A263



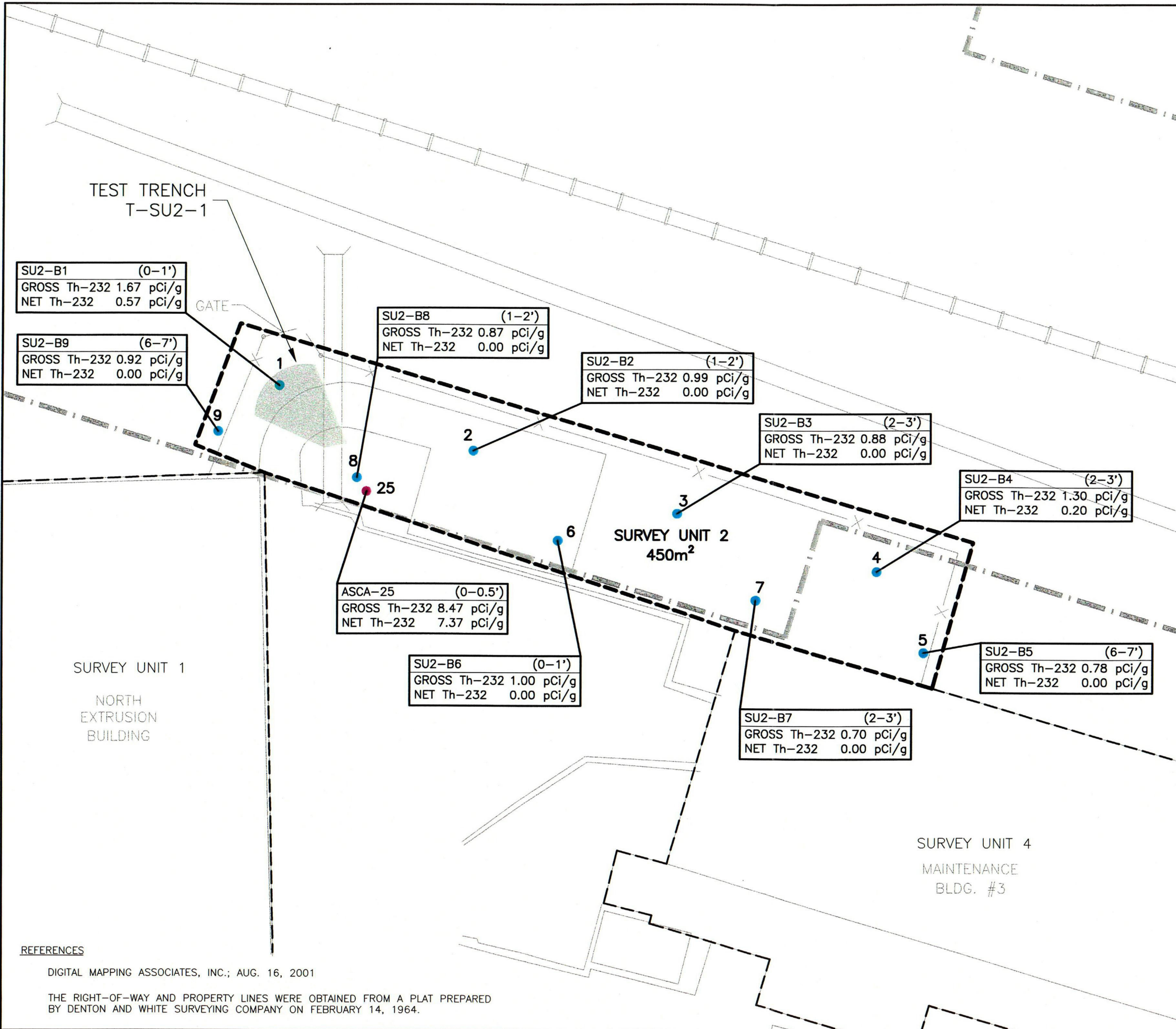
Earth Sciences Consultants, Inc.

REFERENCES

DIGITAL MAPPING ASSOCIATES, INC.; AUG. 16, 2001

THE RIGHT-OF-WAY AND PROPERTY LINES WERE OBTAINED FROM A PLAT PREPARED BY DENTON AND WHITE SURVEYING COMPANY ON FEBRUARY 14, 1964.

000



LEGEND

- SAMPLE POINT WITH NET Th-232 ACTIVITY CONCENTRATION ≤ 3.0 pCi/g
- SAMPLE POINT WITH NET Th-232 ACTIVITY CONCENTRATION > 3.0 pCi/g
- APPROXIMATE SIZE AND LOCATION OF TEST TRENCH (4/4/02)
- - -** SURVEY UNIT BOUNDARY
- · - · -** APPROXIMATE RIGHT-OF-WAY

SAMPLE ID	(DEPTH)	ANALYTICAL RESULTS
GROSS Th-232		
NET Th-232		

NOTES

1. SAMPLE POINTS ADJUSTED TO FIT WITHIN SURVEY UNIT AREA.
2. BACKGROUND VALUE OF 1.1 pCi/g Th-232 SUBTRACTED FROM GROSS Th-232 ANALYTICAL RESULT.

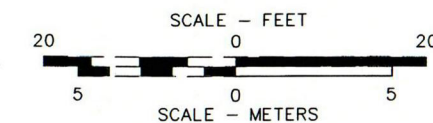


FIGURE 4A-10
Th-232 ANALYTICAL RESULTS SOIL CORE SAMPLES
SURVEY UNIT 2
FORMER KAISER ALUMINUM
SPECIALTY PRODUCTS FACILITY
TULSA, OKLAHOMA

PREPARED FOR
KAISER ALUMINUM & CHEMICAL CORPORATION
BATON ROUGE, LOUISIANA

APPROVED: *RFS 5/02*
CHECKED: *ASL 5/02*
DRAWN: *DEB 3/4/02*
DRAWING NUMBER
5427A283

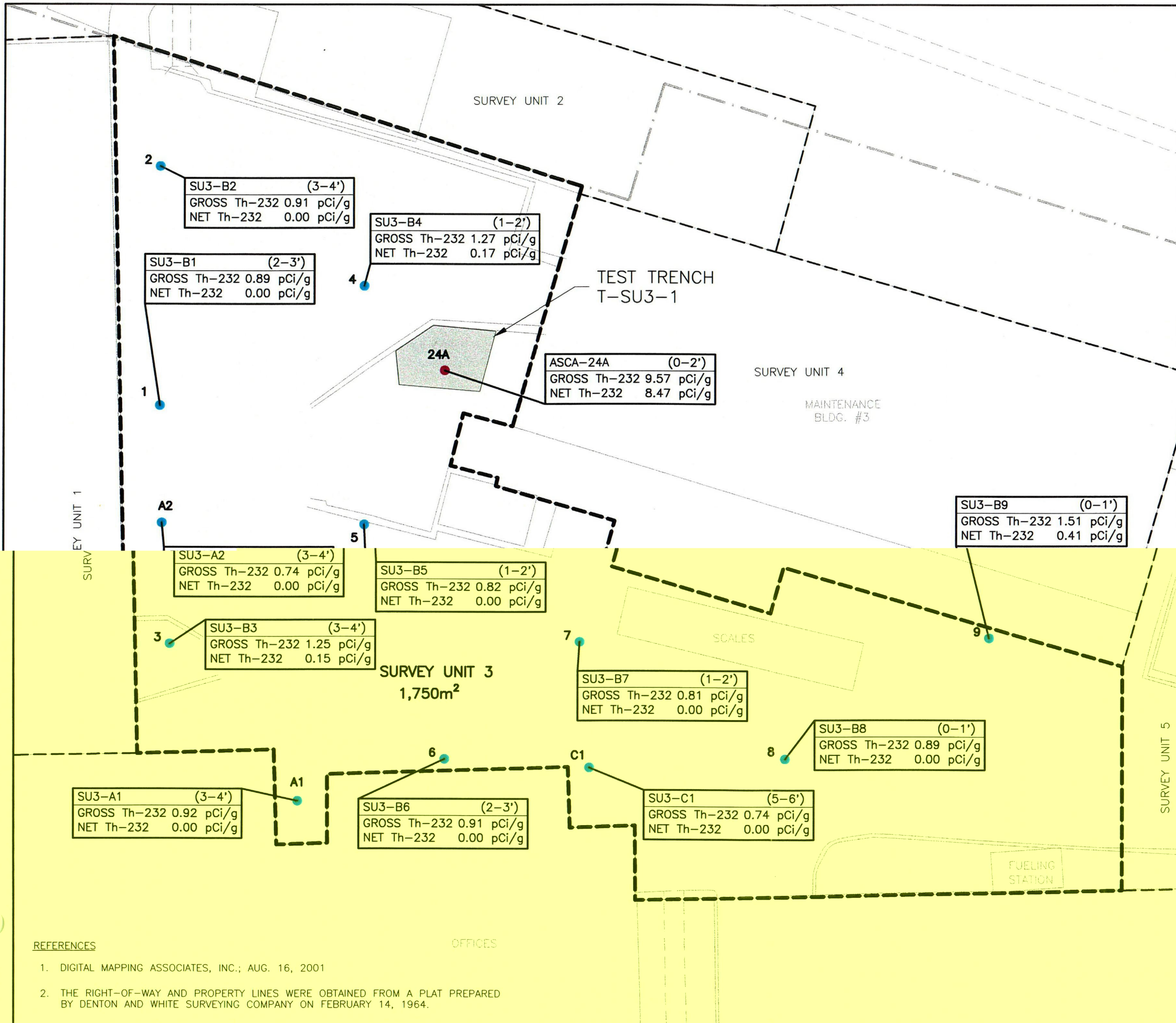


Earth Sciences Consultants, Inc.

REFERENCES

DIGITAL MAPPING ASSOCIATES, INC.; AUG. 16, 2001

THE RIGHT-OF-WAY AND PROPERTY LINES WERE OBTAINED FROM A PLAT PREPARED BY DENTON AND WHITE SURVEYING COMPANY ON FEBRUARY 14, 1964.



NOTE
BACKGROUND VALUE OF 1.1 pCi/g Th-232
SUBTRACTED FROM GROSS Th-232 ANALYTICAL
RESULT.

- LEGEND**
- SAMPLE POINT WITH NET Th-232 ACTIVITY CONCENTRATION ≤3.0 pCi/g
 - SAMPLE POINT WITH NET Th-232 ACTIVITY CONCENTRATION >3.0 pCi/g
 - APPROXIMATE SIZE AND LOCATION OF TEST TRENCH (4/4/02)
 - SURVEY UNIT BOUNDARY
 - - - - - APPROXIMATE RIGHT-OF-WAY

SAMPLE ID	(DEPTH)	ANALYTICAL RESULTS
GROSS Th-232		
NET Th-232		

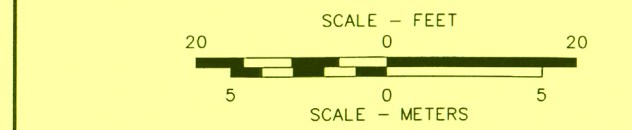


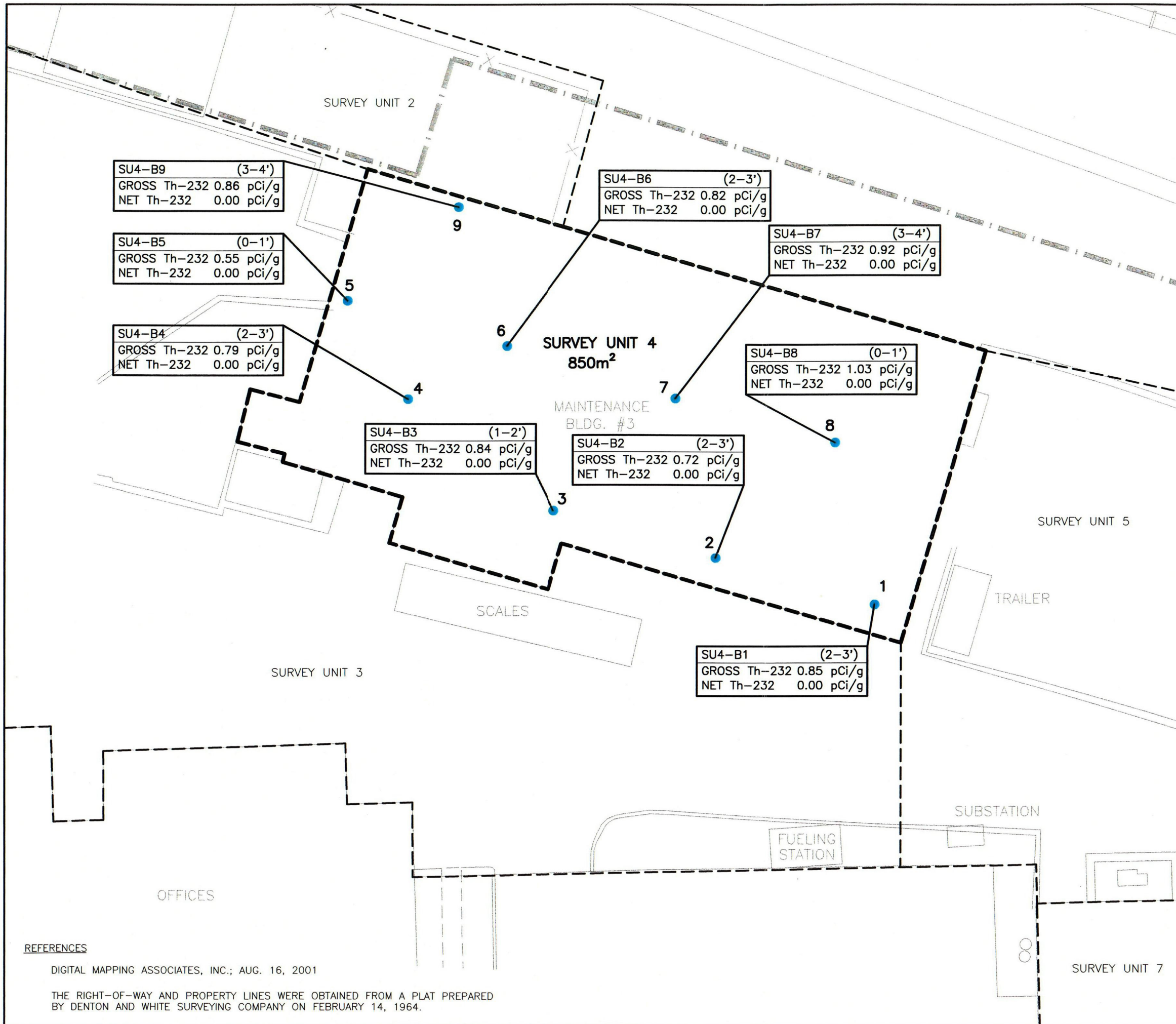
FIGURE 4A-11
Th-232 ANALYTICAL RESULTS SOIL CORE SAMPLES
SURVEY UNIT 3
FORMER KAISER ALUMINUM
SPECIALTY PRODUCTS FACILITY
TULSA, OKLAHOMA

PREPARED FOR
KAISER ALUMINUM & CHEMICAL CORPORATION
BATON ROUGE, LOUISIANA

APPROVED: *RFD 5/02*
CHECKED: *ASL 5/02*
DRAWN: GJA 10/22/01
DRAWING NUMBER
5427257



- REFERENCES**
- DIGITAL MAPPING ASSOCIATES, INC.; AUG. 16, 2001
 - THE RIGHT-OF-WAY AND PROPERTY LINES WERE OBTAINED FROM A PLAT PREPARED BY DENTON AND WHITE SURVEYING COMPANY ON FEBRUARY 14, 1964.



NOTE
BACKGROUND VALUE OF 1.1 pCi/g Th-232
SUBTRACTED FROM GROSS Th-232 ANALYTICAL
RESULT.

LEGEND

- SAMPLE POINT WITH NET Th-232 ACTIVITY CONCENTRATION ≤3.0 pCi/g
- SAMPLE POINT WITH NET Th-232 ACTIVITY CONCENTRATION >3.0 pCi/g
- - -** SURVEY UNIT BOUNDARY
- APPROXIMATE RIGHT-OF-WAY

SAMPLE ID	(DEPTH)	ANALYTICAL RESULTS
GROSS Th-232		
NET Th-232		



FIGURE 4A-12
Th-232 ANALYTICAL RESULTS SOIL CORE SAMPLES
SURVEY UNIT 4
FORMER KAISER ALUMINUM
SPECIALTY PRODUCTS FACILITY
TULSA, OKLAHOMA

PREPARED FOR
KAISER ALUMINUM & CHEMICAL CORPORATION
BATON ROUGE, LOUISIANA

APPROVED	<i>ASL 5/02</i>
CHECKED	<i>ASL 5/02</i>
DRAWN	DEB 11/05/01
DRAWING NUMBER	5427A266

Earth Sciences Consultants, Inc.

REFERENCES

DIGITAL MAPPING ASSOCIATES, INC.; AUG. 16, 2001

THE RIGHT-OF-WAY AND PROPERTY LINES WERE OBTAINED FROM A PLAT PREPARED BY DENTON AND WHITE SURVEYING COMPANY ON FEBRUARY 14, 1964.

