



Department of Energy

Yucca Mountain Project Office
P. O. Box 98608
Las Vegas, NV 89193-8608

WBS 1.2.9.3
QA

AUG 07 1990

Distribution

YUCCA MOUNTAIN PROJECT OFFICE (PROJECT OFFICE) QUALITY ASSURANCE (QA)
SURVEILLANCE SCHEDULE FOR FISCAL YEAR (FY) 1990, REVISION 9, AND FY 1991,
REVISION 0

Enclosed is FY 1990, Revision 9, and FY 1991, Revision 0, of the Project
Office QA Surveillance Schedule for both internal and external surveillances
planned for FY 1990 and FY 1991. This schedule may be revised as required to
reflect additional surveillances and any other changes that may occur.

If you have any questions, please contact either James Blaylock at
(702) 794-7913 or FTS 544-7913 or Robert B. Constable at (702) 794-7945
or FTS 544-7945 of the Yucca Mountain Project QA staff.

for *David Jay*
Donald G. Horton, Director
Quality Assurance
Yucca Mountain Project Office

QA:JB-4423

Enclosure:
Surveillance Schedule

9008140145 900807
PDR WASTE
WM-11 FDC

YMP-5

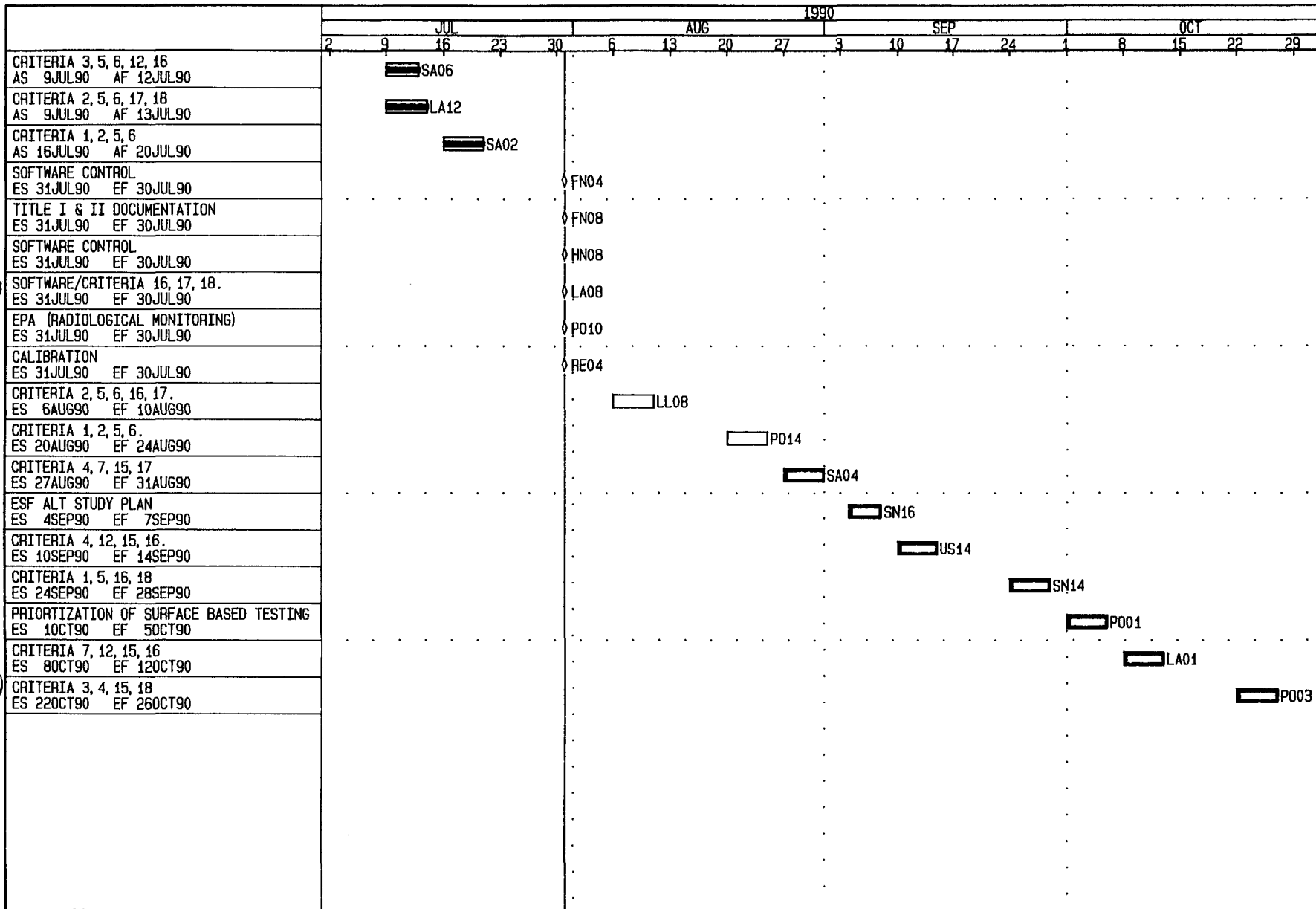
000036

FULL TEXT ASCII SCAN

102.7
WM-11
NH03

REPT	ACTIVITY DESCRIPTION	EARLY START	EARLY FINISH	1990																
				JUL				AUG				SEP				OCT				
				9	16	23	30	6	13	20	27	3	10	17	24	1	8	15	22	29
FENIX SCISSON NEVADA																				
	SOFTWARE CONTROL	31JUL90	30JUL90	NOTE 1.						FN04										
	TITLE I & II DOCUMENTATION	31JUL90	30JUL90	NOTE 1.						FN08										
HOLMES AND NARVER																				
	SOFTWARE CONTROL	31JUL90	30JUL90	NOTE 1.						HN08										
LOS ALAMOS NATIONAL LABORATORY																				
90-032	CRITERIA 2, 5, 6, 17, 18	9JUL90A	13JUL90A	<input checked="" type="checkbox"/> LA12																
	SOFTWARE/CRITERIA 16, 17, 18.	31JUL90	30JUL90	NOTE 1.						LA08										
	CRITERIA 7, 12, 15, 16	8OCT90	12OCT90															<input type="checkbox"/> LA01		
LAWRENCE LIVERMORE NATIONAL LABORATORY																				
90-035	CRITERIA 2, 5, 6, 16, 17.	6AUG90	10AUG90							<input type="checkbox"/> LL08										
REYNOLDS ELECTRICAL AND ENGINEERING																				
	CALIBRATION	31JUL90	30JUL90	NOTE 1.						RE04										
SAIC																				
90-033	CRITERIA 1, 2, 5, 6	16JUL90A	20JUL90A	<input checked="" type="checkbox"/> SA02																
	CRITERIA 4, 7, 15, 17	27AUG90	31AUG90							<input type="checkbox"/> SA04										
SANDIA NATIONAL LABORATORY																				
90-034	CRITERIA 3, 5, 6, 12, 16	9JUL90A	12JUL90A	NOTE 2.	<input checked="" type="checkbox"/> SA05															
	ESF ALT STUDY PLAN	4SEP90	7SEP90								<input type="checkbox"/> SN16									
	CRITERIA 1, 5, 16, 18	24SEP90	28SEP90															<input type="checkbox"/> SN14		
PROJECT OFFICE/T&MSS																				
	EPA (RADIOLOGICAL MONITORING)	31JUL90	30JUL90	NOTE 1.						P010										
	CRITERIA 1, 2, 5, 6.	20AUG90	24AUG90							<input type="checkbox"/> P014										
	PRIORITIZATION OF SURFACE BASED TESTING	1OCT90	5OCT90															<input type="checkbox"/> P001		
	CRITERIA 3, 4, 15, 18	22OCT90	26OCT90															<input type="checkbox"/> P003		
U.S.GEOLOGICAL SURVEY																				
	CRITERIA 4, 12, 15, 16.	10SEP90	14SEP90								<input type="checkbox"/> US14									
1. POSTPONED UNTIL FURTHER NOTICE. 2. UNSCHEDULED SURVEILLANCE.																				

<input type="checkbox"/> Activity Bar/Early Dates <input checked="" type="checkbox"/> Critical Activity <input type="checkbox"/> Progress Bar	DEPARTMENT OF ENERGY YUCCA MOUNTAIN PROJECT OFFICE FY-90 STATUS, REV 9. SURV W/ORG FY-91 STATUS, REV 0. SURV W/ORG.	Sheet 1 of 1 Data Date: 31JUL90 Plot Date: 3AUG90	APPROVED BY: <i>Deis Jan</i> 8-6-90 DATE:
Primavera Systems, Inc. 1984-1990	Project Start: 10CT89 Project Finish: 1SEP90*		



Activity Bar/Early Dates
 Critical Activity
 Progress Bar

Project Start : 10CT89
 Project Finish: 1SEP90*

DEPARTMENT OF ENERGY
 YUCCA MOUNTAIN PROJECT OFFICE
 FY-90 STATUS, REV 9, SURV SCH W/ORG

Sheet 1 of 1


Data Date: 31JUL90
 Plot Date: 3AUG90

FY-90 REV 8 SURVEILLANCE SCH W/ORG

Date	Revision	Checked	Approved

AUG 07 1990

Distribution—Memorandum dated

Donald G. Horton, HQ (RW-3) FORS
Corinne Macaluso, HQ (RW-331) FORS
John Lee, SAN
J. T. Davis, SAN
A. R. Chernoff, MSD, AL
H. E. Valencia, LAO, AL
J. H. Hines, OOD, AL
K. R. Hooks, NRC, Washington, DC 
Norman Frank, CER, Arlington, VA
R. R. Loux, NWPO, Carson City, NV
Susan Zimmerman, NWPO, Carson City, NV
D. H. Appel, USGS, Denver, CO
L. J. Jardine, LLNL, Livermore, CA
D. W. Short, LLNL, Livermore, CA
R. J. Herbst, LANL, Los Alamos, NM
H. P. Nunes, LANL, Los Alamos, NM
T. O. Hunter, SNL, 6310, Albuquerque, NM
R. R. Richards, SNL, 6310, Albuquerque, NM
R. B. Blailock, SNL, 123, Albuquerque, NM
J. W. Gilray, NRC, Las Vegas, NV
L. R. Hayes, USGS, Las Vegas, NV
R. L. Bullock, FSN, Las Vegas, NV
M. J. Regenda, FSN, Las Vegas, NV
J. C. Calovini, H&N, Las Vegas, NV
C. O. Wright, H&N, Las Vegas, NV
James Rusk, MACTEC, Las Vegas, NV
M. A. Fox, REECo, Las Vegas, NV
R. F. Pritchett, REECo, Las Vegas, NV
J. E. Clark, SAIC, Las Vegas, NV 517/T-22
J. H. Nelson, SAIC, Las Vegas, NV 517/T-04
J. B. Harper, SAIC, Las Vegas, NV, 517/T-04
C. H. Prater, SAIC, Las Vegas, NV 517/T-06
Englebrecht Tiesenhausen, Clark County, Las Vegas, NV
Steve Bradhurst, Nye County, NV