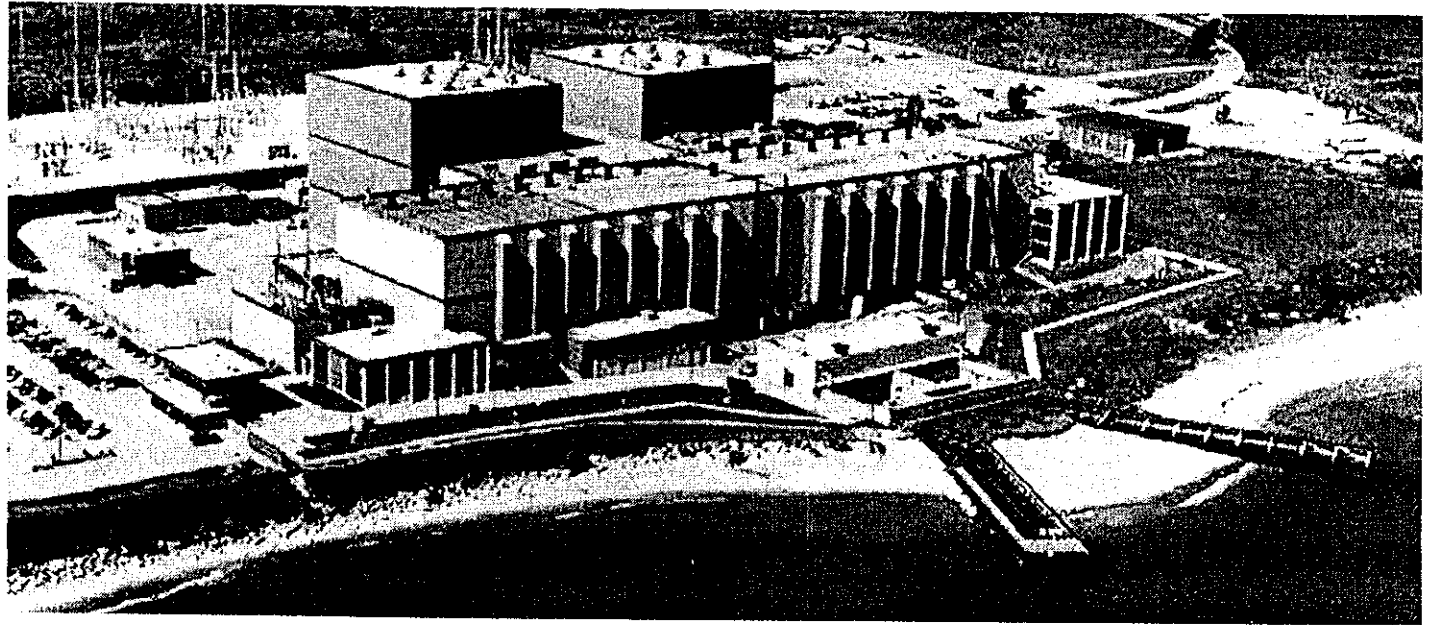
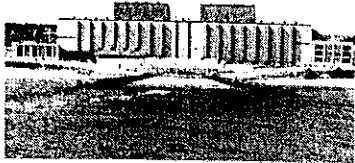


NMC

Point Beach Nuclear Plant

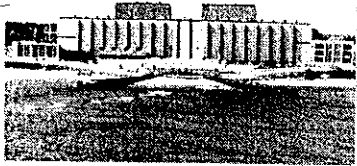


April 7, 2003



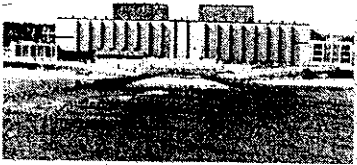
Agenda

- Introduction
- Auxiliary Feedwater Issue Perspective
- NMC Overall Actions
- Point Beach Organizational Assessment
- Corrective Action Program Improvements
- Culture Survey Results
- Summary
- Closing Remarks



Introduction

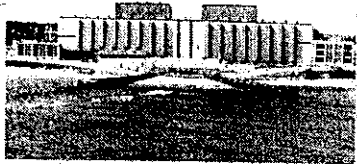
- NMC Mission - NMC will achieve **EXCELLENCE** in **SAFE, RELIABLE** operation...
- Excellence is needed in all aspects of operation at Point Beach
- Performance has fallen short in some areas
- To achieve excellence, NMC needs to stay ahead of problems



Auxiliary Feedwater Issue Perspective

- Initial finding by NMC demonstrated NMC's commitment to stay ahead of problems
- NMC understands the design and licensing bases
- Subsequent issue was a result of:
 - Not implementing the design and licensing bases
 - Incomplete extent of condition evaluation
 - Ineffective corrective action

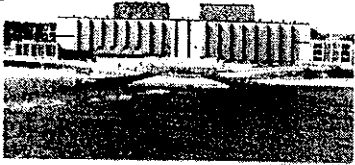
NMC Overall Actions



NMC Plans Include Aggressive and Comprehensive Actions to Be in Front of Issues:

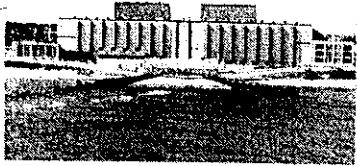
<u>ITEM</u>	<u>DATE</u>
• Dissection and analysis of AFW system	Complete
• Resolution of risk-significant issues identified	July 21
• Application of lessons to other systems and programs	Complete
• Overall Organizational Assessment	Complete
• Culture survey	Complete
• Mapping of NMC assessment to NRC IP 95003 for gaps	May 15
• Review of Root Causes for several past issues for Common Causes	May 28
• Comprehensive Corrective Action Program Improvements	June 20

Point Beach Organizational Assessment



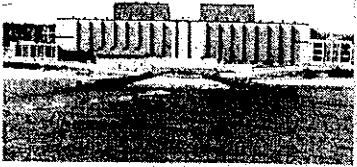
Focus Areas:

<u>ITEM</u>	<u>DATE</u>
• Prioritization of Excellence Plan and Resources	May 23
• Internalization/Implementation of the Excellence Plan	May 30
• Improve Organizational Alignment	June 16
• Revitalize Corrective Action Program	June 20
• Improve Supervisory/Individual Accountability	July 17



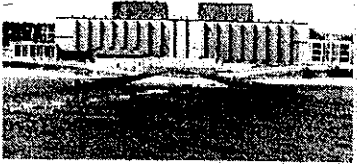
Corrective Action Program Improvements

<u>ITEM</u>	<u>DATE</u>
• Corrective Action Program Health Review	Complete
• Identify Improvement Elements	Complete
• Effective Screening Process	Complete
• Implement Technical Panel Review of Root Cause and other Significant Corrective Actions	April 15
• Strengthen CARB oversight of CAP	May 20
• Improve Monitoring/Trending	May 20
• Effective Root Cause Evaluation	June 17
• Improve CAP Understanding	June 20



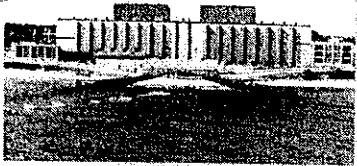
Point Beach Culture Survey Results

- Overall Nuclear Safety Culture
 - Good to Very Good
- Safety Conscious Work Environment
 - Good to Very Good
- General Culture and Work Environment
 - Adequate to Good
- Management, and Supervisory Skills and Practices
 - Adequate
- SOER 02-04, Davis-Besse Lessons Learned
 - Adequate to Good



Summary

- NMC recognizes the need for performance improvement
- AFW System reliability improved
- Commitment to address the issues
 - Ownership
 - Accountability
 - Urgency
- Systematic approach to improve and sustain performance



Conclusion

- NMC and WE committed to Excellence
- Actions outlined will result in NMC being ahead of issues
- As the work progresses, NMC will provide periodic updates to the NRC that demonstrate results
- The actions at Point Beach should result in minimizing duplication of NMC and NRC efforts