

MANUAL HARD COPY DISTRIBUTION

DOCUMENT TRANSMITTAL 2003-19901

USER INFORMATION:

~~GERLACH*ROSE M~~ EMPL#:28401 CA#: 0363
~~Address: NUCSA2~~
~~Phone#: 254-3194~~

TRANSMITTAL INFORMATION:

TO: ~~GERLACH*ROSE M~~ 04/17/2003
LOCATION: DOCUMENT CONTROL DESK
FROM: NUCLEAR RECORDS DOCUMENT CONTROL CENTER
'NUCSA-2')
THE FOLLOWING CHANGES HAVE OCCURRED TO THE HARDCOPY
OR ELECTRONIC MANUAL ASSIGNED TO YOU:

355 - 355 - MEDIA/PUBLIC OFFICIALS CONTACT:
EMERGENCY PLAN-POSITION SPECIFIC PROCEDURE

REMOVE MANUAL TABLE OF CONTENTS DATE: 02/26/2003

ADD MANUAL TABLE OF CONTENTS DATE: 04/16/2003

CATEGORY: PROCEDURES TYPE: EP
ID: EP-PS-355
REPLACE: REV:11

REPLACE: REV:11

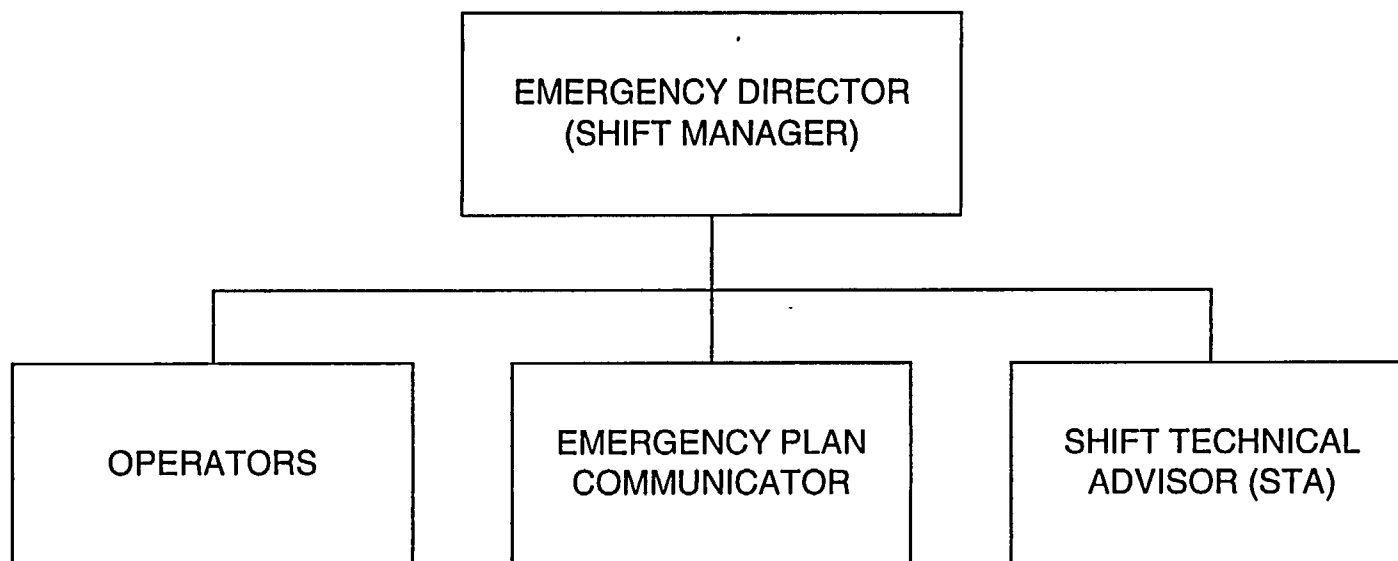
REMOVE: PCAF 2001-1176 REV: N/A

ADD: PCAF 2001-1176 REV: N/A

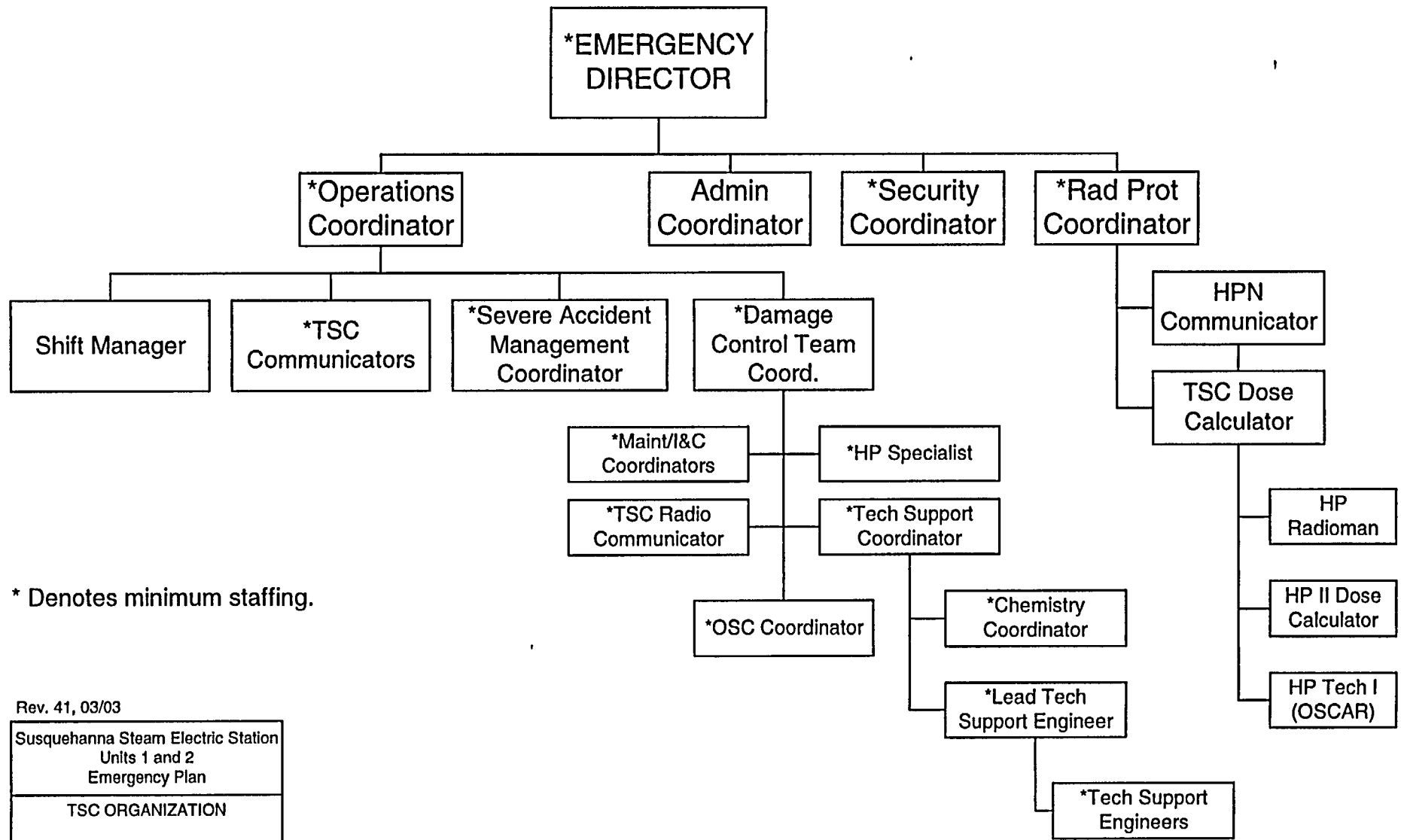
UPDATES FOR HARD COPY MANUALS WILL BE DISTRIBUTED
WITHIN 5 DAYS IN ACCORDANCE WITH DEPARTMENT
PROCEDURES. PLEASE MAKE ALL CHANGES AND
ACKNOWLEDGE COMPLETE IN YOUR NIMS INBOX UPON
RECEIPT OF HARD COPY. FOR ELECTRONIC MANUAL USERS,
ELECTRONICALLY REVIEW THE APPROPRIATE DOCUMENTS AND
ACKNOWLEDGE COMPLETE IN YOUR NIMS INBOX.

A045

EMERGENCY ORGANIZATION CONTROL ROOM



TSC ORGANIZATION



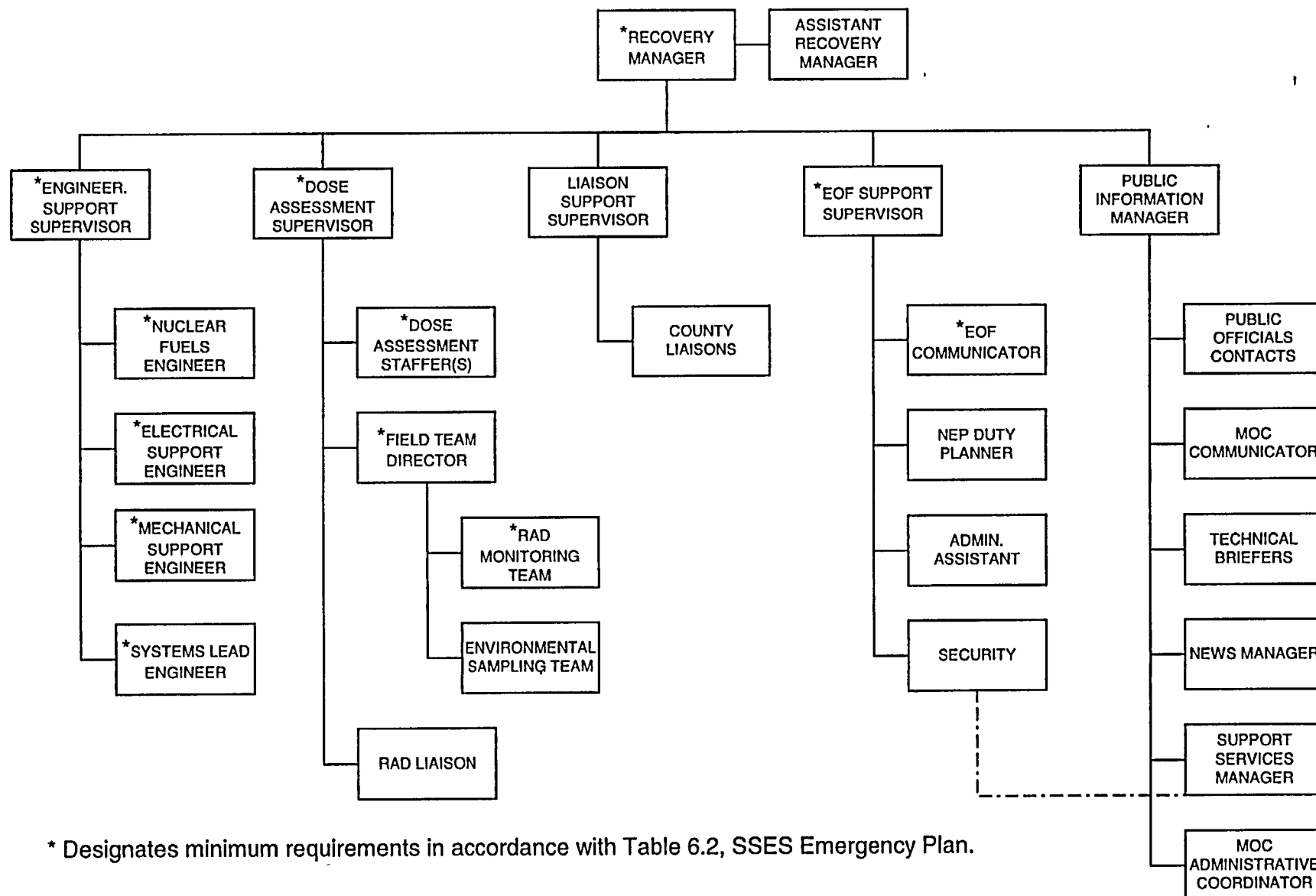
Rev. 41, 03/03

Susquehanna Steam Electric Station
Units 1 and 2
Emergency Plan

TSC ORGANIZATION

FIGURE 6 2

EOF ORGANIZATION



* Designates minimum requirements in accordance with Table 6.2, SSES Emergency Plan.

PREVIOUS EMERGENCY DECLARATIONS AT SUSQUEHANNA

DATE	CLASSIFICATION	DESCRIPTION
09/22/82	ALERT	A small electrical fire in the ESW pump house on the plant site. The fire was out within 10 minutes. The emergency was downgraded to UNUSUAL EVENT an hour later and ended 30 minutes after that. This event occurred before the plant went commercial.
06/22/83	UNUSUAL EVENT	Bomb threat phoned to plant security. A thorough search turned up no explosives. The event lasted nine hours.
07/26/84	UNUSUAL EVENT	Failure of diesel generators to start during a planned test on Unit 2. The unit was in start-up testing and had not begun commercial operation. A problem in the electrical system was corrected, and power restored. The event lasted 40 minutes.
03/21/86	UNUSUAL EVENT	Injured and contaminated worker.
05/24/86	ALERT	Erosion discovered in pumps for one of the ESW loops. A second ESW loop was operable. PPL shut down the plant to inspect all ESW pumps. The alert lasted 10 hours while the units were being shut down.
09/23/87	UNUSUAL EVENT	A main steam line plug dislodged during a Unit 1 refueling outage. The plug was suspended over the reactor core by three air hoses. Plant crews placed a net under the plug and removed it from the reactor vessel. The event lasted 11 hours.
01/13/88	UNUSUAL EVENT	Injured and contaminated worker.
04/10/89	UNUSUAL EVENT	Injured and contaminated worker.
02/03/90	ALERT	Loss of a shutdown cooling system on Unit 1 resulted in an increase in reactor water temperature. An alternate system was used to stabilize the water temperature until PPL could restore a circuit breaker that disabled the cooling system. The alert lasted six hours.
01/18/92	UNUSUAL EVENT	A small hydrogen explosion in the basement of the plant's turbine building injured two workers, one of whom was contaminated with radioactive dust. The event lasted about an hour and a half.
8/23/01	UNUSUAL EVENT	An unarmed individual scaled the outer perimeter fence and was apprehended by plant security. The individual did not enter the Protected Area. The event lasted about 3.5 hours
10/03/02	UNUSUAL EVENT	A fire in the Unit two start-up transformer. The fire was extinguished by an automatic fire suppression system. The event lasted about 2.5 hours.
1/29/03	UNUSUAL EVENT	Monitors briefly detected a higher than normal radioactive gas release from the Unit 1 turbine building vent. The event lasted about five hours.