

.MANUAL HARD COPY DISTRIBUTION

DOCUMENT TRANSMITTAL 2003-19686

---

USER INFORMATION:

~~GERLACH\*ROSE M    EMPL#:28401    CA#: 0363  
Address: NUCSA2  
Phone#: 254-3194~~

TRANSMITTAL INFORMATION:

TO:        ~~GERLACH\*ROSE M~~        04/17/2003  
LOCATION:    DOCUMENT CONTROL DESK  
FROM:      NUCLEAR RECORDS DOCUMENT CONTROL CENTER  
(NUCSA-2)  
THE FOLLOWING CHANGES HAVE OCCURRED TO THE HARDCOPY  
OR ELECTRONIC MANUAL ASSIGNED TO YOU:

210 - 210 - NEP DUTY PLANNER: EMERGENCY PLAN-  
POSITION SPECIFIC PROCEDURE

REMOVE MANUAL TABLE OF CONTENTS    DATE: 02/26/2003

ADD        MANUAL TABLE OF CONTENTS    DATE: 04/16/2003

CATEGORY: PROCEDURES    TYPE: EP

ID:        EP-PS-210

REPLACE:    REV:15

REPLACE:    REV:15

REMOVE:    PCAF 2003-1102 REV: N/A

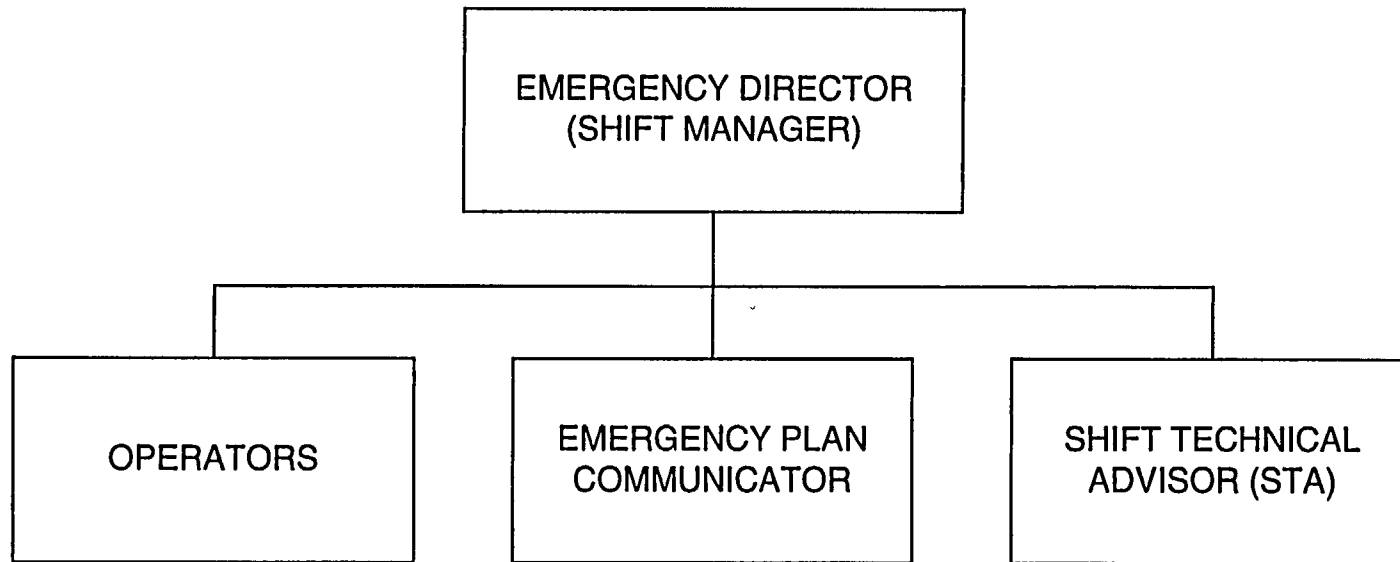
ADD:        PCAF 2003-1102 REV: N/A

UPDATES FOR HARD COPY MANUALS WILL BE DISTRIBUTED  
WITHIN 5 DAYS IN ACCORDANCE WITH DEPARTMENT  
PROCEDURES. PLEASE MAKE ALL CHANGES AND  
ACKNOWLEDGE COMPLETE IN YOUR NIMS INBOX UPON  
RECEIPT OF HARD COPY. FOR ELECTRONIC MANUAL USERS,  
ELECTRONICALLY REVIEW THE APPROPRIATE DOCUMENTS AND  
ACKNOWLEDGE COMPLETE IN YOUR NIMS INBOX.

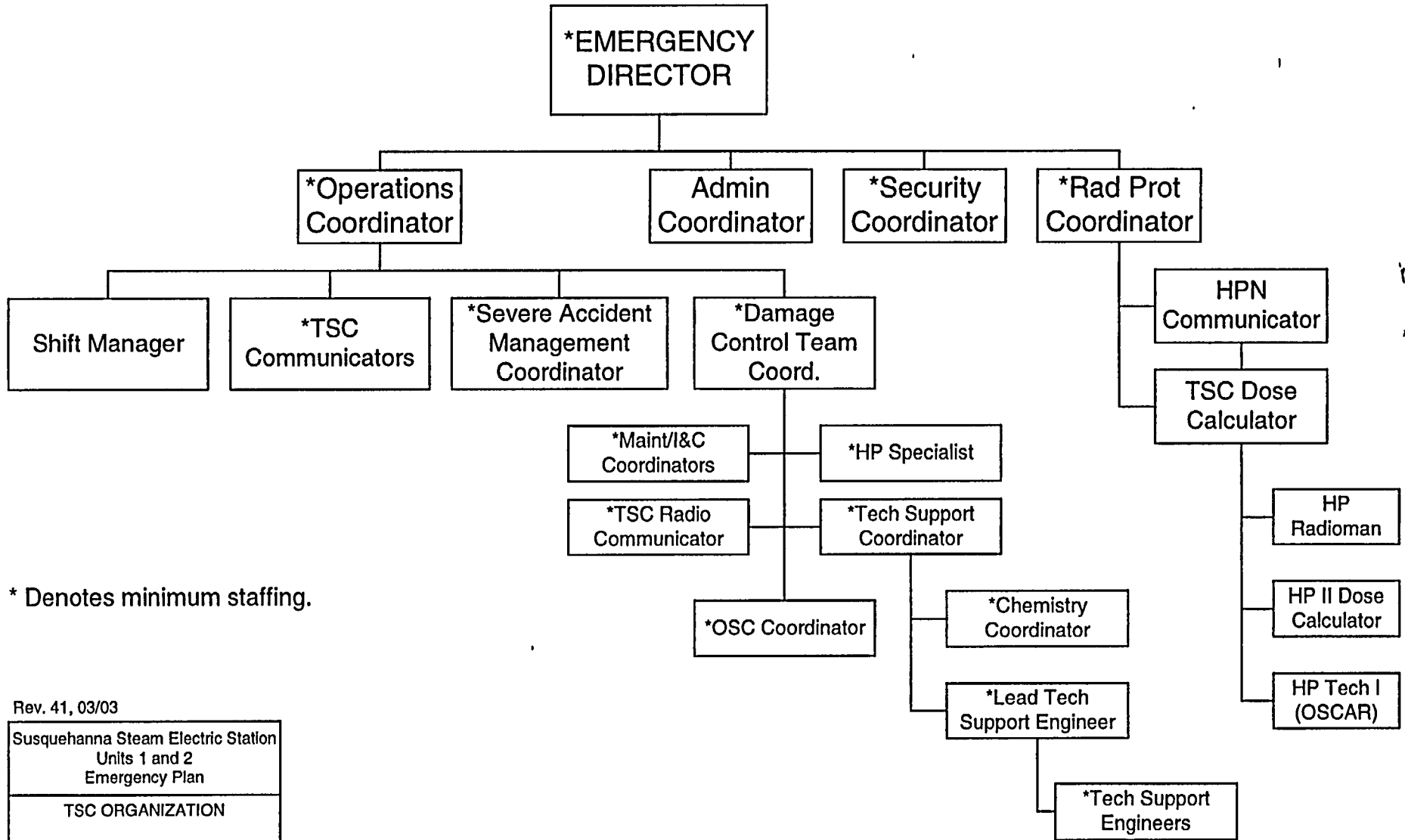
AD45

**EMERGENCY ORGANIZATION  
CONTROL ROOM**

---



## TSC ORGANIZATION



\* Denotes minimum staffing.

Rev. 41, 03/03

Susquehanna Steam Electric Station  
Units 1 and 2  
Emergency Plan

TSC ORGANIZATION

FIGURE 6.2

# EOF ORGANIZATION

