

MANUAL HARD COPY DISTRIBUTION

DOCUMENT TRANSMITTAL 2003-19660

USER INFORMATION:

GERLACH*ROSE M EMPL#:28401 CA#: 0363
Address: NUCSA2
Phone#: 254-3194

TRANSMITTAL INFORMATION:

TO: GERLACH*ROSE M 04/17/2003
LOCATION: DOCUMENT CONTROL DESK
FROM: NUCLEAR RECORDS DOCUMENT CONTROL CENTER
(NUCSA-2)
THE FOLLOWING CHANGES HAVE OCCURRED TO THE HARDCOPY
OR ELECTRONIC MANUAL ASSIGNED TO YOU:

116 - 116 - ADMINISTRATIVE (ADMIN) COORDINATOR:
EMERGENCY PLAN-POSITION SPECIFIC PROCEDURE

REMOVE MANUAL TABLE OF CONTENTS DATE: 07/01/2002

ADD MANUAL TABLE OF CONTENTS DATE: 04/16/2003

CATEGORY: PROCEDURES TYPE: EP

ID: EP-PS-116

REPLACE: REV:13

REPLACE: REV:13

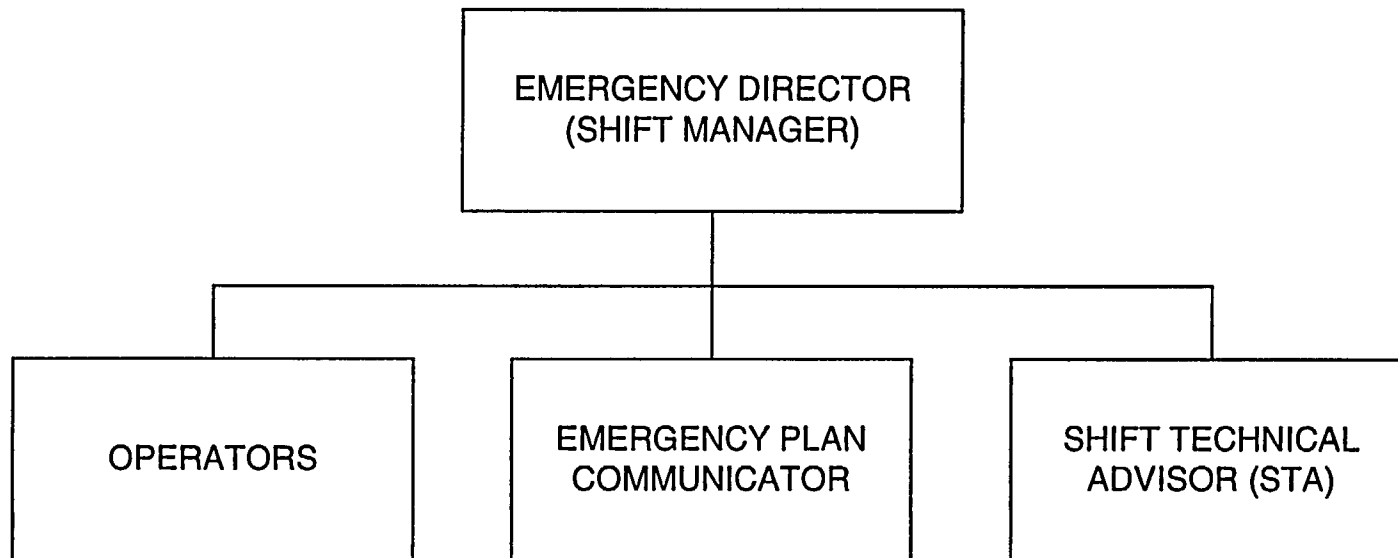
REMOVE: PCAF 2002-1389 REV: N/A

ADD: PCAF 2002-1389 REV: N/A

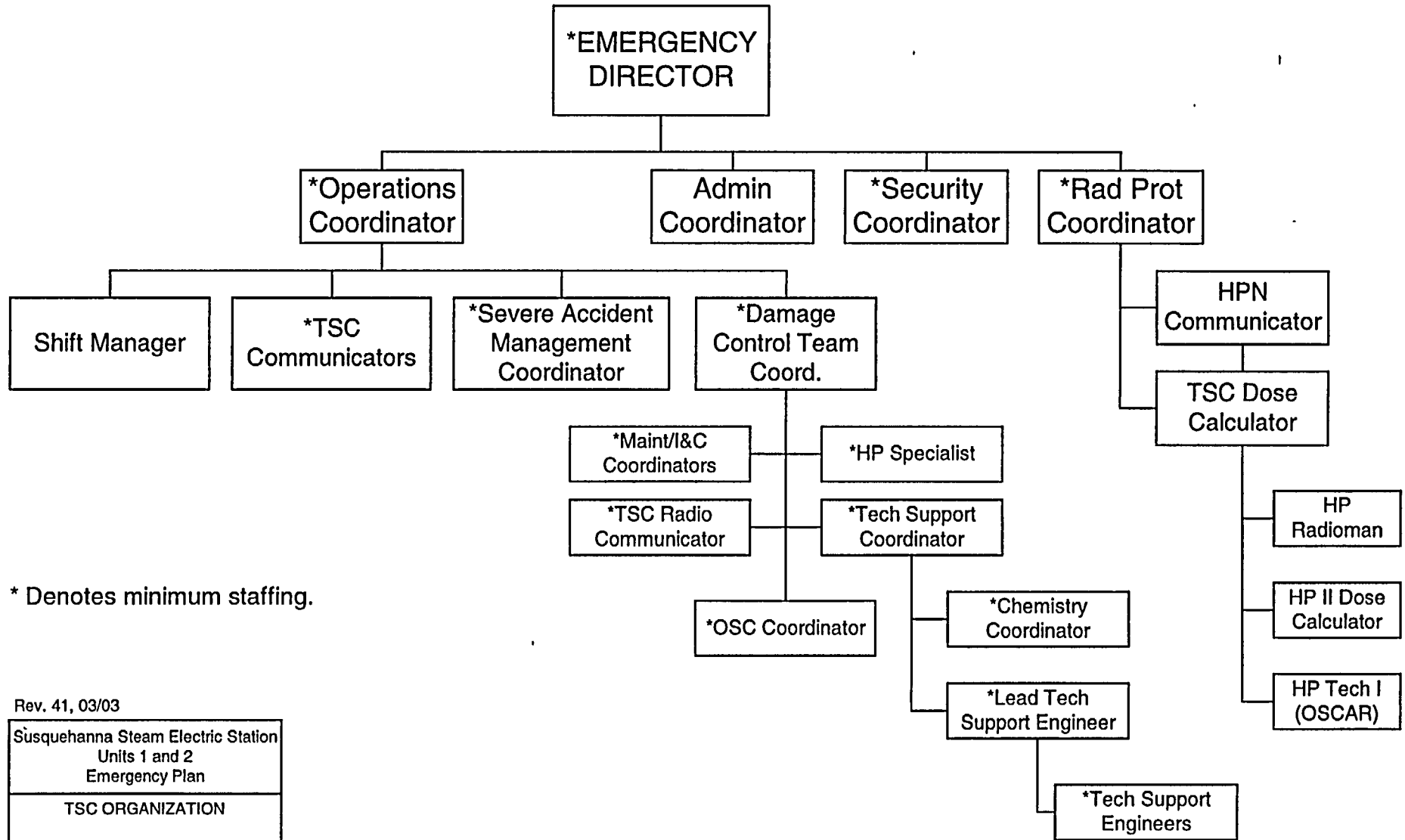
UPDATES FOR HARD COPY MANUALS WILL BE DISTRIBUTED
WITHIN 5 DAYS IN ACCORDANCE WITH DEPARTMENT
PROCEDURES. PLEASE MAKE ALL CHANGES AND
ACKNOWLEDGE COMPLETE IN YOUR NIMS INBOX UPON
RECEIPT OF HARD COPY. FOR ELECTRONIC MANUAL USERS,
ELECTRONICALLY REVIEW THE APPROPRIATE DOCUMENTS AND
ACKNOWLEDGE COMPLETE IN YOUR NIMS INBOX.

A045

EMERGENCY ORGANIZATION CONTROL ROOM



TSC ORGANIZATION



* Denotes minimum staffing.

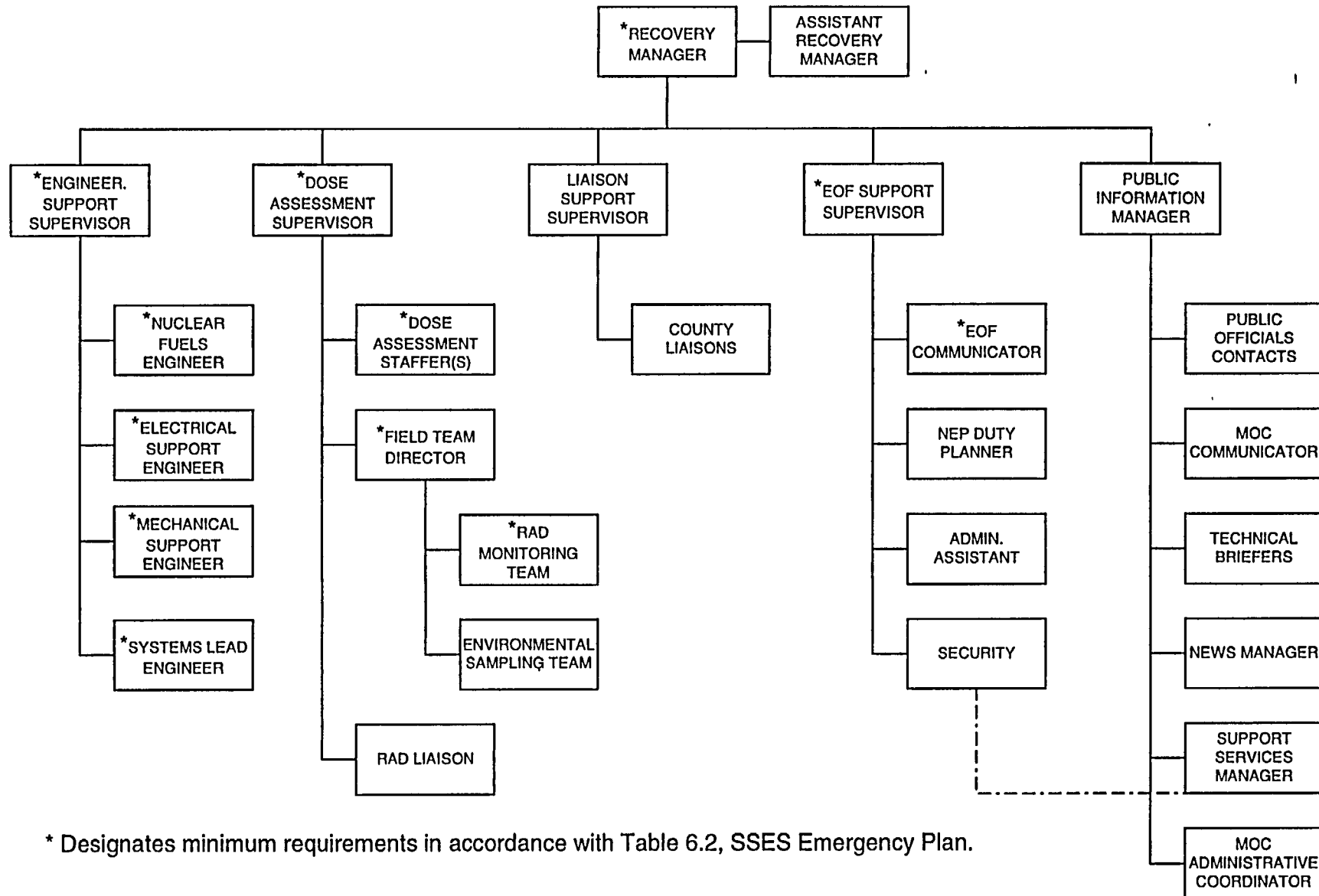
Rev. 41, 03/03

Susquehanna Steam Electric Station
Units 1 and 2
Emergency Plan

TSC ORGANIZATION

FIGURE 6.2

EOF ORGANIZATION



* Designates minimum requirements in accordance with Table 6.2, SSES Emergency Plan.

TECHNICAL SUPPORT CENTER ACCESS LOG

Date: _____

Page ____ of ____

Position/Title	Are you fit for duty?		Have you consumed alcohol in the last five hours?		Name	Time In
	Yes	No	Yes	No		
Administrative Coordinator						
Administrative Support:						
Data Technician						
ED Logkeeper Clerk						
Rad Protection Clerk						
Runner						
Telecopy Clerk						
TSC Radio Communicator Clerk						
Chemistry Coordinator						
Damage Control Team Coordinator						
Electrical Maintenance Foreman (2)						
Emergency Director						
HPN Communicator						
HP Radioman						
HP Specialist						
HP Tech I (OSCAR)						
HP Tech I (OSCAR)						
HP Tech II (DC)						
I&C Coordinator						
I&C Duty Supervisor						
Lead Tech Support Engineer						
Maintenance Coordinator						
Mechanical Maintenance Foreman						
Operations Coordinator						
OSC Coordinator						
Rad Protection Coordinator						

TSC SHIFT SCHEDULE

DATE _____

POSITION	1st SHIFT	2nd SHIFT	3rd SHIFT
Administrative Coordinator			
Administrative Support:			
ED Logkeeper			
Rad Protection Clerk			
Runner			
Telecopy Clerk			
TSC Radio Communicator Clk			
BOP Engineer			
Chemistry Coordinator			
Damage Control Tm Coordinator			
Electrical/I&C Engineer			
Electrical Maintenance Foreman			
Emergency Director			
HPN Communicator			
HP Radio Communicator			
HP Specialist			
HP Tech II (DC)			
HP Tech I (Oscar)			
I&C Coordinator			
I&C Duty Supervisor			
Lead Technical Support Engineer			
Maintenance Coordinator			
Mechanical Maint. Foreman			
NSSS Engineer			
Operations Coordinator			
OSC Coordinator			
P&T Engineer			

