

MANUAL HARD COPY DISTRIBUTION

DOCUMENT TRANSMITTAL 2003-19557

USER INFORMATION:

~~GERLACH*ROSE M EMPL#:28401 CA#: 0363
Address: NUCSA2
Phone#: 254-3194~~

TRANSMITTAL INFORMATION:

TO: ~~GERLACH*ROSE M~~ 04/17/2003
LOCATION: (DOCUMENT CONTROL DESK
FROM: NUCLEAR RECORDS DOCUMENT CONTROL CENTER
 (NUCSA-2)
THE FOLLOWING CHANGES HAVE OCCURRED TO THE HARDCOPY
OR ELECTRONIC MANUAL ASSIGNED TO YOU:

128 - 128 - HEALTH PHYSICS NETWORK COMMUNICATOR:
EMERGENCY PLAN-POSITION SPECIFIC PROCEDURE

REMOVE MANUAL TABLE OF CONTENTS DATE: 03/06/2003

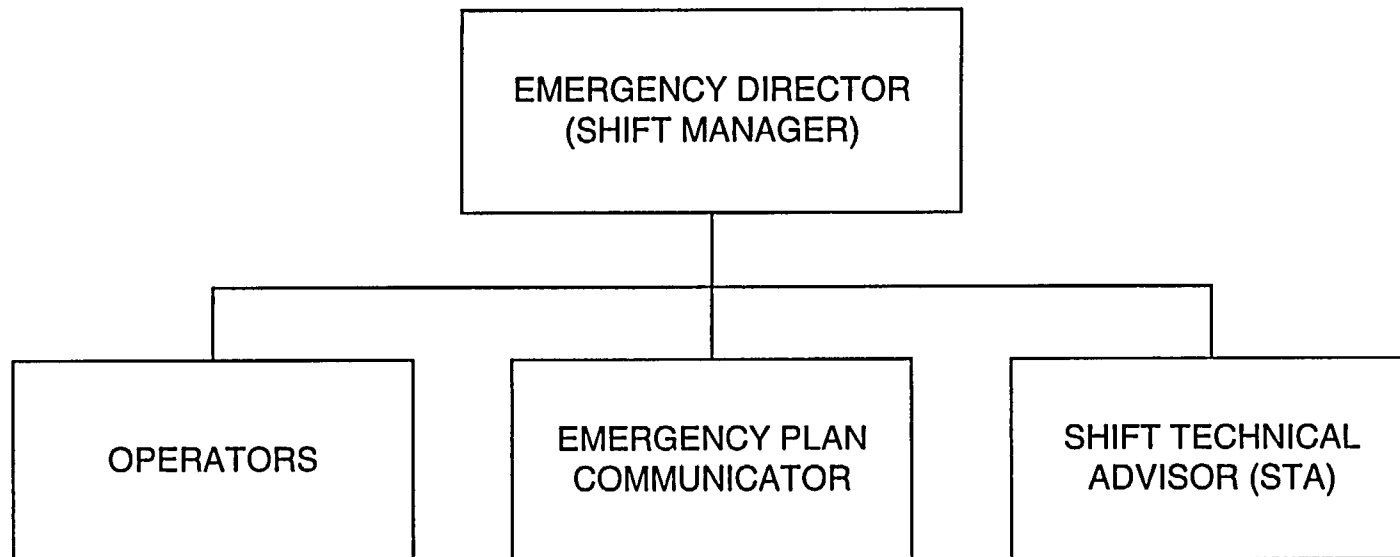
ADD MANUAL TABLE OF CONTENTS DATE: 04/16/2003

CATEGORY: PROCEDURES TYPE: EP
ID: EP-PS-128
REPLACE: REV:5

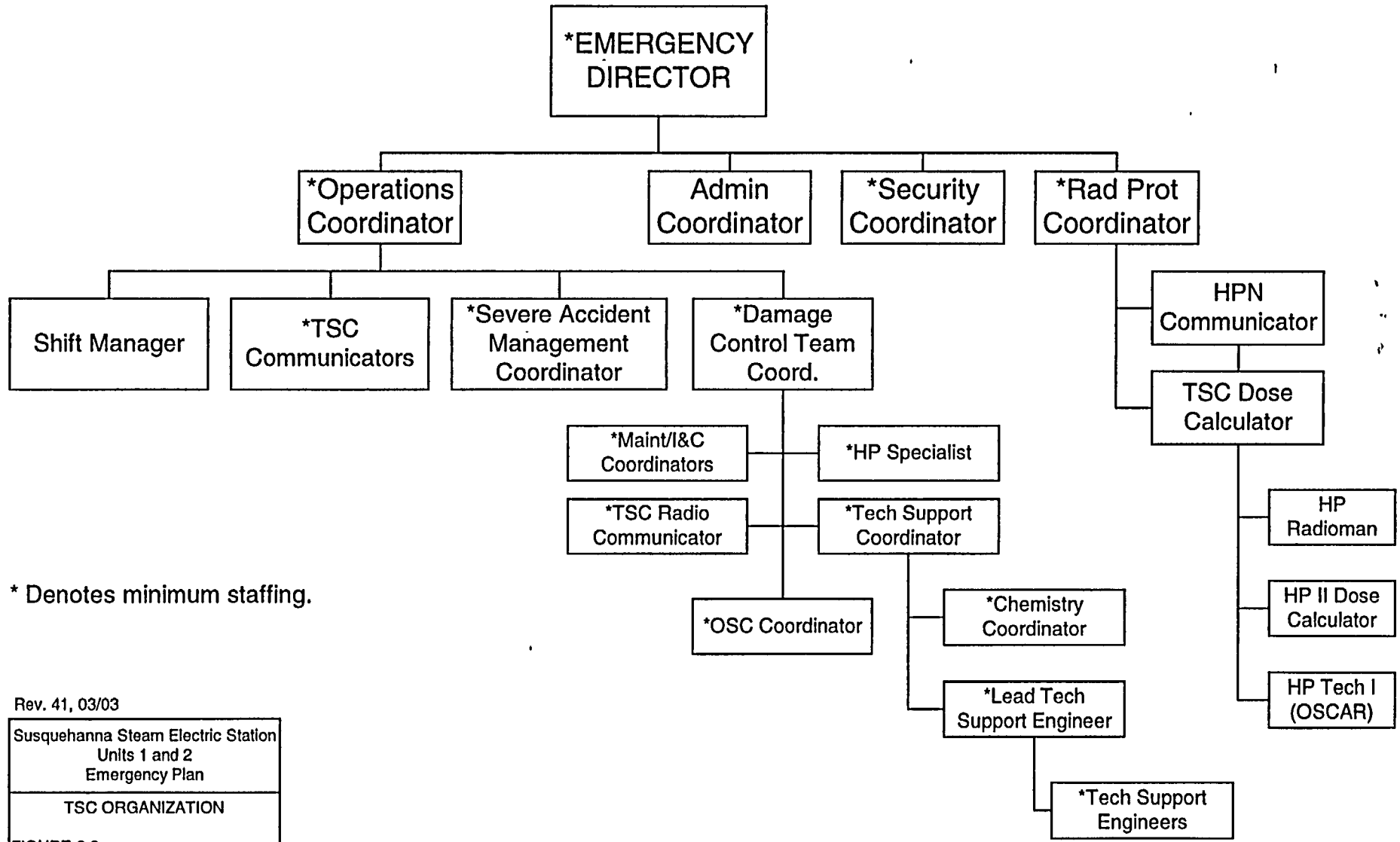
UPDATES FOR HARD COPY MANUALS WILL BE DISTRIBUTED
WITHIN 5 DAYS IN ACCORDANCE WITH DEPARTMENT
PROCEDURES. PLEASE MAKE ALL CHANGES AND
ACKNOWLEDGE COMPLETE IN YOUR NIMS INBOX UPON
RECEIPT OF HARD COPY. FOR ELECTRONIC MANUAL USERS,
ELECTRONICALLY REVIEW THE APPROPRIATE DOCUMENTS AND
ACKNOWLEDGE COMPLETE IN YOUR NIMS INBOX.

A045

EMERGENCY ORGANIZATION CONTROL ROOM



TSC ORGANIZATION



* Denotes minimum staffing.

Rev. 41, 03/03

| |
|---|
| Susquehanna Steam Electric Station Units 1 and 2 Emergency Plan |
| TSC ORGANIZATION |
| FIGURE 6 2 |

EOF ORGANIZATION

