

# Annual Assessment Meeting Ginna

---

Reactor Oversight Program - Cycle 3



Nuclear Regulatory Commission - Region I  
King of Prussia, PA

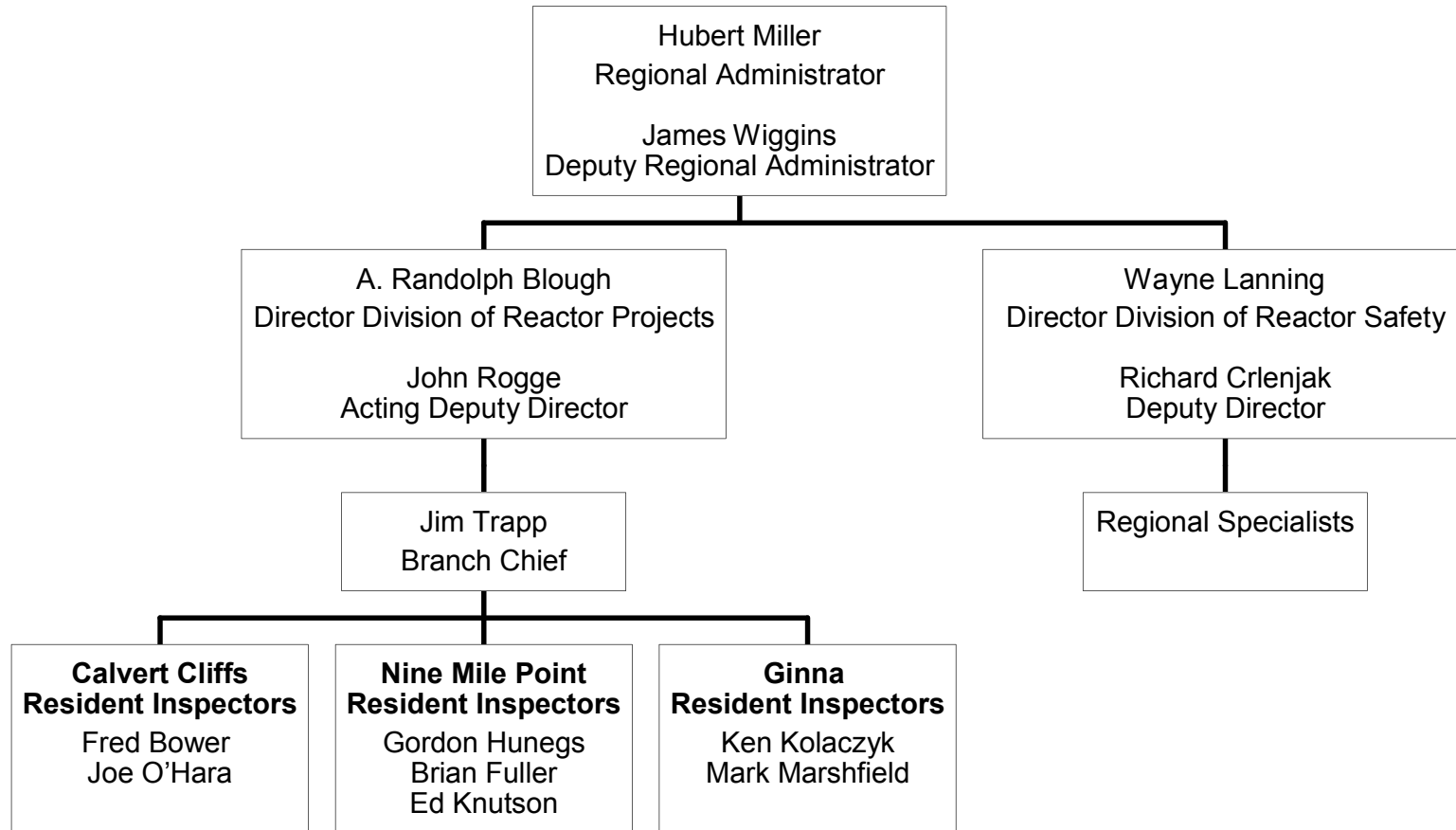
# Agenda

---

- Introduction
- Review of Reactor Oversight Process
- National Summary of Plant Performance
- Discussion of Plant Performance Results
- General Topic: Security Update
- Licensee Response and Remarks
- NRC Closing Remarks
- Meeting with the Licensee adjourned
- NRC available to address questions from the public

# Region I Organization

---



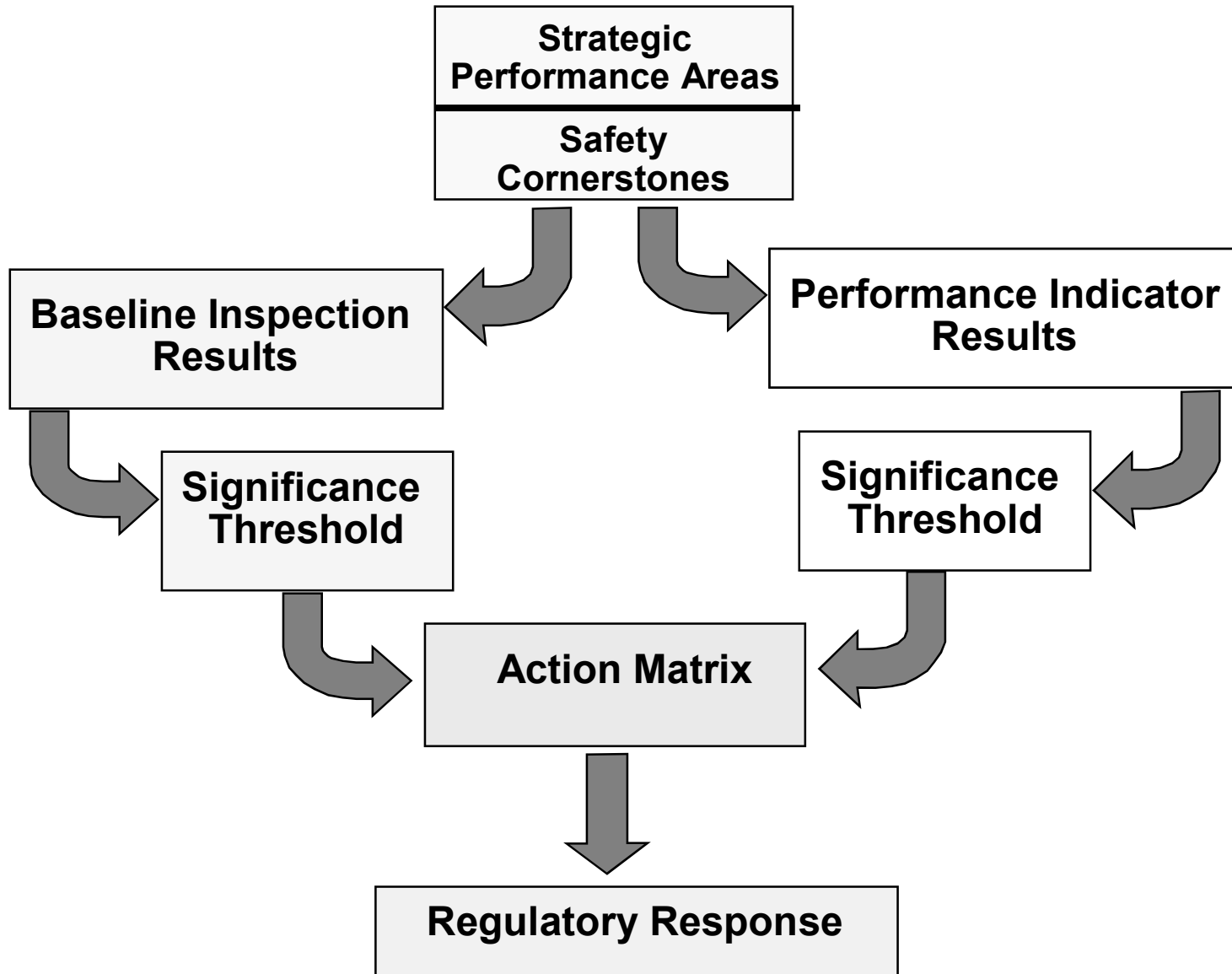
# NRC Representatives

---

- A. Randolph Blough, Reactor Projects Division Director
  - ▶ (610) 337-5229
  - ▶ (610) 337-5230
- Jim Trapp, Branch Chief
  - ▶ (610) 337-5186
- Ken Kolaczyk, Senior Resident Inspector
  - ▶ (315) 524-6935
- Mark Marshfield, Resident Inspector
  - ▶ (315) 524-6935

# Reactor Oversight Process

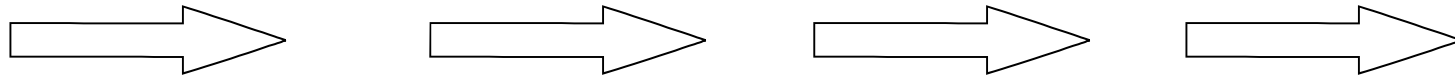
---



# Action Matrix Concept

---

<b>Licensee Response</b>	<b>Regulatory Response</b>	<b>Degraded Cornerstone</b>	<b>Multiple/Rep. Degraded Cornerstone</b>	<b>Unacceptable Performance</b>
--------------------------	----------------------------	-----------------------------	---	---------------------------------



Increasing Safety Significance

Increasing NRC Inspection Efforts

Increasing NRC/Licensee Management Involvement

Increasing Regulatory Actions

# Significance Threshold

---

## Inspection Findings/Perf. Indicator

**Green:** Very Low safety issue  
Baseline Inspection

**White:** Low to moderate safety issue  
Supplemental Inspection (95001)

**Yellow:** Substantial safety issue  
Supplemental Inspection (95002)

**Red:** High safety issue  
Supplemental Inspection (95003)

# Examples of Baseline Inspections

---

- Performance Indicator Verification
- Resident Baseline Inspections
  - ▶ Fire Protection
  - ▶ Maintenance and Surveillance
  - ▶ Operability Evaluation
- Region Led Baseline Inspections
  - ▶ Team Inspections
    - Problem Identification and Resolution (PI&R)
  - ▶ Emergency Planning
  - ▶ Operator Training
  - ▶ Security
  - ▶ Radiological Controls



# National Summary of Plant Performance

---

Licensee Response	56
Regulatory Response	37
Degraded Cornerstone	6
Multiple/Repetitive Degraded Cornerstone	3
Unacceptable	0
<hr/>	
Total Plants	102

\*Davis-Besse is in IMC 0350 process

# National Summary

---

- Performance Indicator Results (at end of ROP Cycle 3)
  - ▶ **Green** 1835
  - ▶ **White** 5
  - ▶ **Yellow** 0
  - ▶ **Red** 0
  
- Total Inspection Findings (ROP Cycle 3)
  - ▶ **Green** 783
  - ▶ **White** 30
  - ▶ **Yellow** 1
  - ▶ **Red** 2

# **Ginna**

## **Assessment Results**

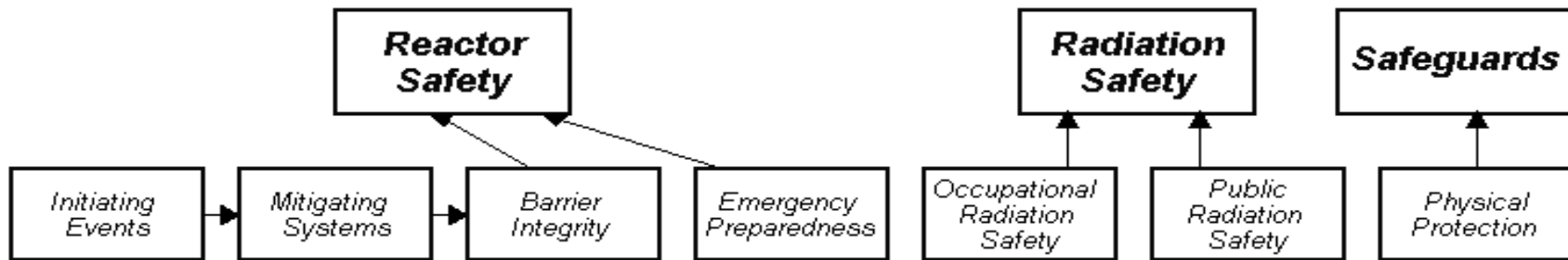
---

**(Jan 1 - Dec 31, 2002)**

- Operated safely throughout the Assessment Period
- Regulatory Response column of the Action Matrix for the last three quarters of 2002 (cornerstone objectives met with minimal reduction in safety margin)
- Licensee Response column of the Action Matrix for first quarter of 2002 (cornerstone objectives fully met)
- NRC will conduct the baseline inspections, a 95001 (EP white finding), and a vessel head inspection during the next cycle

# 4Q Performance Indicators

WWW.NRC.GOV then click Reactor Oversight Process



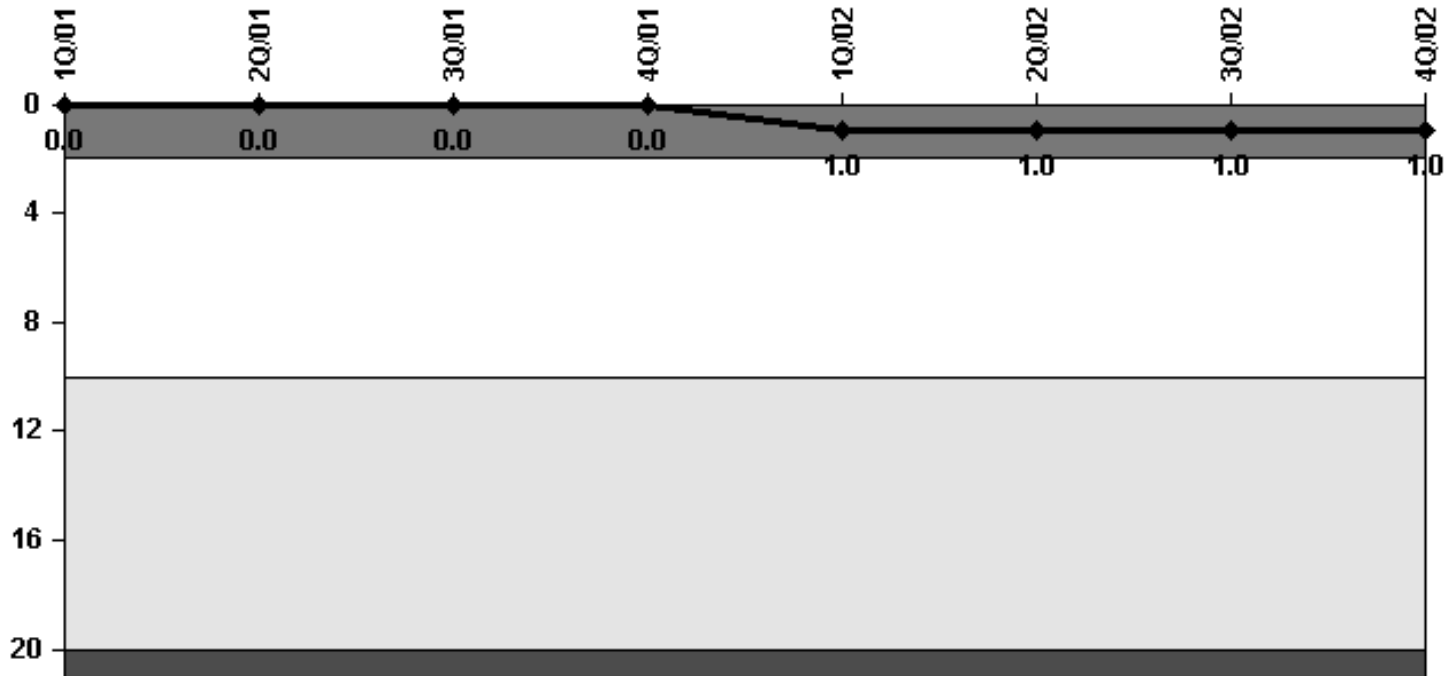
## Performance Indicators

Unplanned Scrams (G)	Emergency AC Power System Unavailability (G)	Reactor Coolant System Activity (G)	Drill/Exercise Performance (G)	Occupational Exposure Control Effectiveness (G)	RETS/ODCM Radiological Effluent (G)	Protected Area Equipment (G)
Scrams With Loss of Normal Heat Removal (G)	High Pressure Injection System Unavailability (G)	Reactor Coolant System Leakage (G)	ERO Drill Participation (G)			Personnel Screening Program (G)
Unplanned Power Changes (G)	Heat Removal System Unavailability (G)		Alert and Notification System (G)			FFD/Personnel Reliability Program (G)
	Residual Heat Removal System Unavailability (G)					
	Safety System Functional Failures (G)					

# Typical Performance Indicator

WWW.NRC.GOV then click Reactor Oversight Process

### Scrams with Loss of Normal Heat Removal



Thresholds: White > 2.0 Yellow > 10.0 Red > 20.0

# Ginna Inspection Activities

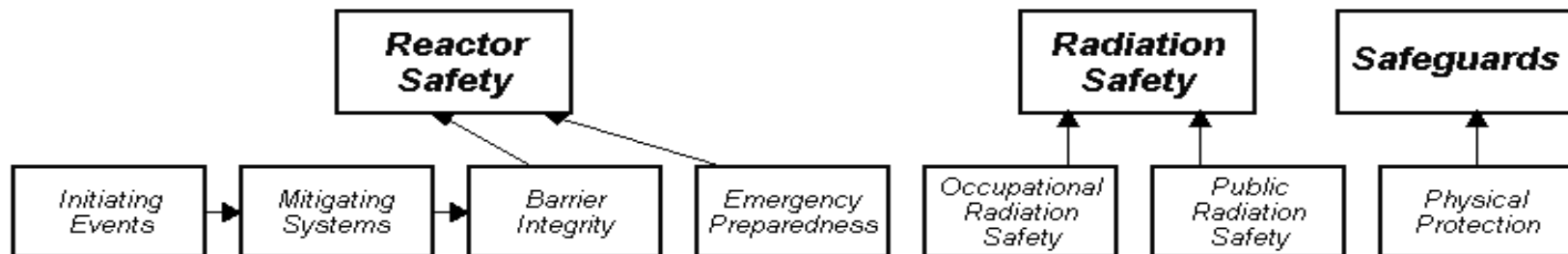
---

(Jan 1 - Dec 31, 2002)

- 4336 hours of inspection related activities
- 2 resident inspectors assigned to the site
- 14 regional inspector visits
  - ▶ Included 1 team inspection (PI&R)
- Inspection Findings
  - ▶ 11 findings of very low safety significance (Green)
  - ▶ 1 finding of low to moderate safety significance (White)

# Inspection Results

WWW.NRC.GOV then click Reactor Oversight Process



## Most Significant Inspection Findings

Quarter	Initiating Events	Mitigating Systems	Barrier Integrity	Emergency Preparedness	Occupational Radiation Safety	Public Radiation Safety	Physical Protection
4Q/2002	No findings this quarter	<b>G</b>	No findings this quarter	No findings this quarter	No findings this quarter	No findings this quarter	No findings this quarter
3Q/2002	No findings this quarter	<b>G</b>	No findings this quarter	No findings this quarter	No findings this quarter	Findings without color designation	No findings this quarter
2Q/2002	No findings this quarter	<b>G</b>	No findings this quarter	<b>W (1)</b>	Findings without color designation	No findings this quarter	No findings this quarter
1Q/2002	No findings this quarter	<b>G</b>	No findings this quarter	No findings this quarter	No findings this quarter	No findings this quarter	No findings this quarter

Miscellaneous findings

# Action Matrix

Cornerstone	Description of Issue	1Q	2Q	3Q	4Q	1Q	2Q	3Q	4Q	1Q	2Q	3Q	4Q
		01	01	01	01	02	02	02	02	03	03	03	03
		ROP 2				ROP 3				ROP 4			
Initiating Events													
Mitigating Systems													
Barrier Integrity													
Emergency Preparedness	Finding      Failure of Siren Feedback System									WHITE			
Public Radiation Safety													
Occupational Radiation Safety													
Physical Protection													
<b>ACTION MATRIX</b>		<b>LICENSEE RESPONSE</b>				<b>REGULATORY RESPONSE</b>				<b>LICENSEE RESPONSE</b>			

- Licensee Response - All inputs GREEN
- Regulatory Response - 1 or 2 WHITES in different cornerstones in a Strategic Perform Area
- Degraded Cornerstone - 2 WHITE or 1 YELLOW in a single cornerstone OR any 3 WHITES in a Strategic Perform Area
- Multiple/Repetitive - Repetitive Degraded OR Multiple YELLOW or 1 RED



# NRC Security Program Update

---

- NRC has issued Interim Compensatory Measures and NRC Orders
- Office of Nuclear Security and Incident Response Formed (NSIR - April 2002)
- Threat Advisory and Protective Measure System
- Access Authorization Order (January 7, 2003)
- Force-on-Force Exercises (February 2003)
- Training Order (TBD)
- Fatigue Order (TBD)
- Design Basis Threat (TBD)

# **NRC Self-Improvement Efforts**

---

- Security Enhancements
- Significance Determination Process Task Group
- Performance Indicator Program
- Davis-Besse Lessons Learned Task Force

# Reference Sources

---

- Reactor Oversight Process
  - ▶ <http://www.nrc.gov/NRR/OVERSIGHT/ASSESS/index.html>
- Public Electronic Reading Room
  - ▶ <http://www.nrc.gov/reading-rm/adams.html>
- Public Document Room
  - ▶ 1-800-397-4209 (Toll Free)