

Annual Assessment Meeting

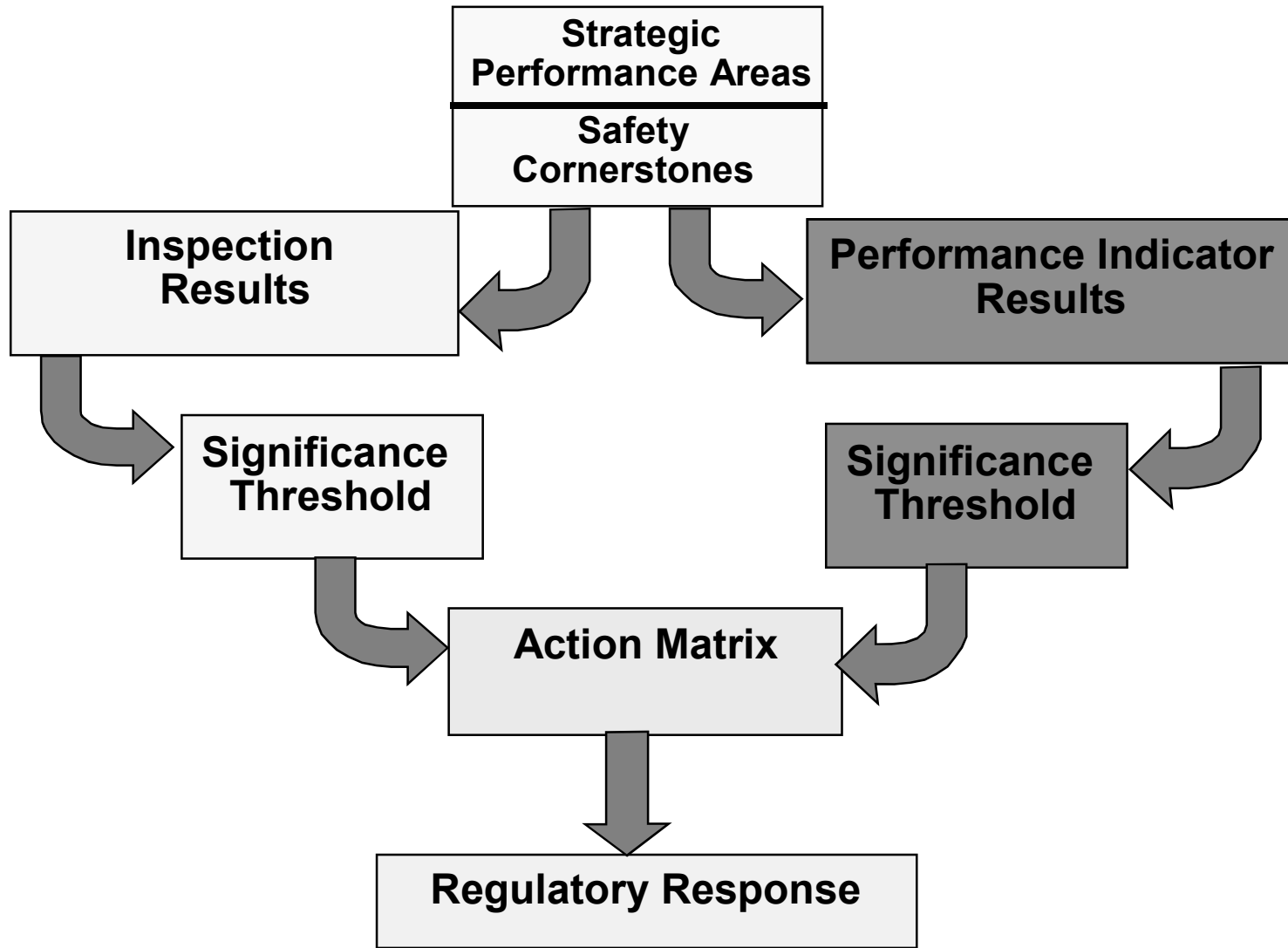


Nuclear Regulatory Commission

NRC Performance Goals

- Maintain safety and protect the environment
- Enhance public confidence
- Improve effectiveness, efficiency, and realism of processes and decision making
- Reduce unnecessary regulatory burden

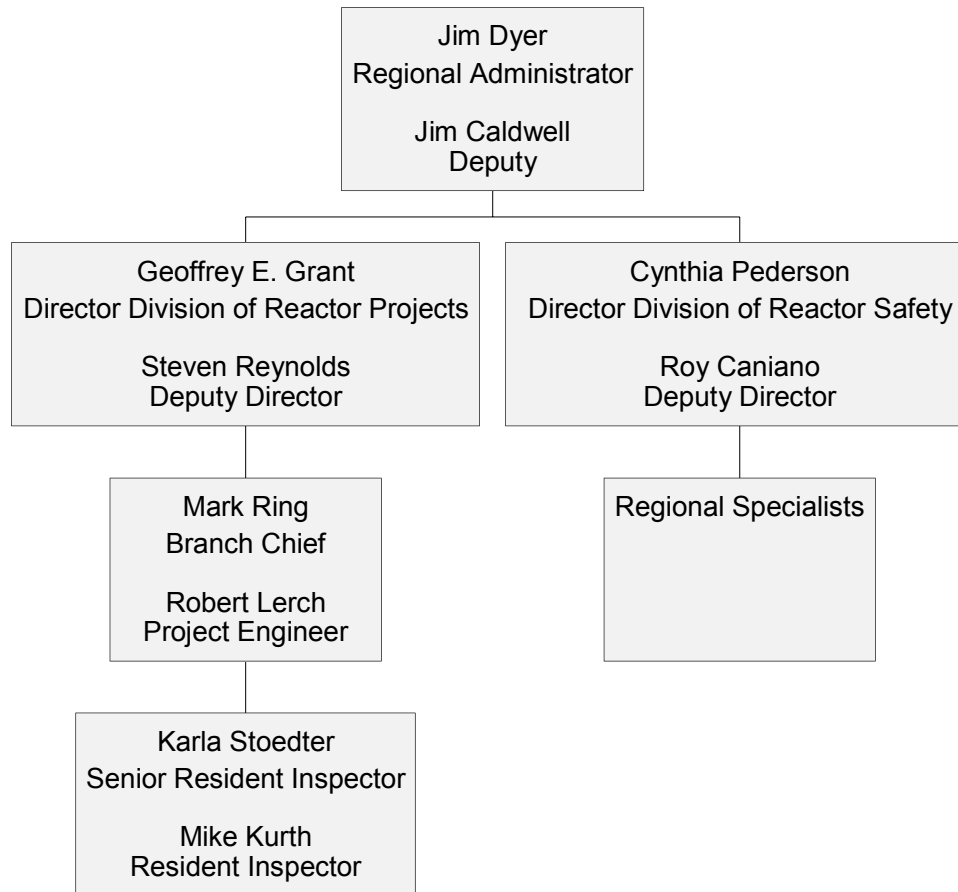
Reactor Oversight Process



Key Aspects of the Assessment Program

- Objective review of licensee performance
- “Action Matrix” identifies agency response commensurate with safety significance
- Increasing safety significance results in:
 - Increased levels of inspection
 - Involvement of higher levels of NRC and Licensee management
 - Increased regulatory action
- Plant specific assessment information on NRC public web site

Regional Organization



Annual Licensee Assessment Meeting

- A public forum for discussion of the licensee's performance
- NRC will address the licensee performance issues identified in the Annual Assessment Letter
- Licensee will respond to the information in the letter and inform the NRC of new or existing programs to maintain or improve their performance

- # ROP Action Matrix Summary for 2002
- Column 1 - Licensee Response
 - Column 2 - Regulatory Response
 - Column 3 - Degraded Cornerstone
 - Column 4 - Multiple/ Repetitive Degraded Cornerstone
 - Column 5 - Unacceptable Performance
-

(Nationwide number does not contain Davis Besse)

	Column 1	Column 2	Column 3	Column 4	Column 5
Nationwide	59	33	7	3	0
Region I	9	14	2	1	0
Region II	26	4	1	1	0
Region III	11	10	2	0	0
Region IV	13	5	2	1	0

Security & Safeguards Update

- Creation of Office of Nuclear Security and Incident Response
- Top-to-Bottom Review of Security Program Initiated
- Issuance of Orders/ Interim Compensatory Measures (ICM)
- Verification of Licensee Actions on ICM

Security & Safeguards Update

- Proposed Revisions to Design Basis Threat
- Pending Orders on Fatigue/Guard Training
- Initiation of Pilot Force-on-Force Exercise Program

- Name of Plant: Quad Cities Nuclear Power Station
- Plant Operator: Exelon
- Number of Units: 2 operating
- Reactor Type and Vendor: BWR-4, GE
- Location: near Cordova, Illinois
- Power Output (electrical): both 912 Mwe
- Source of Circulating Water: Mississippi River

Major Plant Activities in 2002

Unit 2 Extended Power Uprate (EPU) Refueling Outage Feb 2002

Unit 1 EPU Refueling Outage Nov 2002

Unit 1 Jet Pump Beam Outage Jan 2002

Unit 2 Dryer Failure July 2002

Unit 2 automatic shutdown in April - water level

Several power reductions, forced outages on both units due to equipment problems

Plant Performance Summary

- Operated Safely
- Fully Met All Cornerstone Objectives
- In Licensee Response Band of Action Matrix
- 21 GREEN Findings
- Human Performance Cross Cutting Issue

Greater than GREEN PIs and Findings (Details)

- No Greater Than GREEN Findings
- No Greater Than GREEN Performance Indicators
- Cross Cutting Issue - Human Performance

Contacts for additional information for:

Quad Cities

- Regional Public Affairs Officer:
 - ▶ Name: Jan Strasma
 - ▶ Phone: 630-829-9663

- State Liaison Officer:
 - ▶ Name: Roland Lickus
 - ▶ Phone: 630-829-9660

- Branch Chief:
 - ▶ Name: Mark Ring
 - ▶ Phone: 630-829-9703

- Senior Resident Inspector:
 - ▶ Name: Karla Stoedter
 - ▶ Phone: 309-654-2227

Contacting the NRC

- Report an emergency
 - ▶ (301) 816-5100 (call collect)
- Report a safety concern:
 - ▶ (800) 695-7403
 - ▶ Allegation@nrc.gov
- General information or questions
 - ▶ www.nrc.gov
 - ▶ Select “What We Do” for Public Affairs