

# Annual Assessment Meeting

---



Nuclear Regulatory Commission

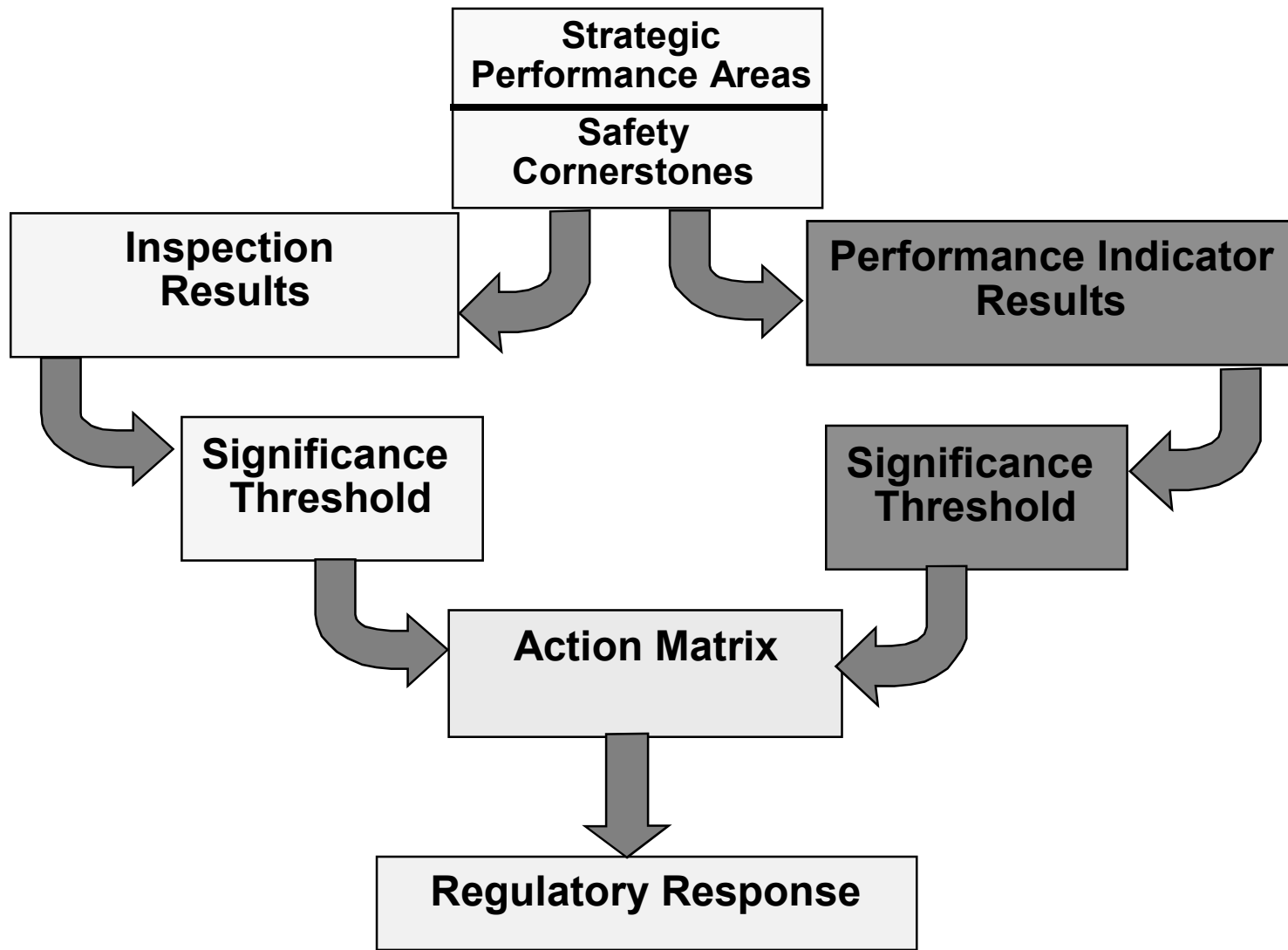
# NRC Performance Goals

---

- Maintain safety and protect the environment
- Enhance public confidence
- Improve effectiveness, efficiency, and realism of processes and decision making
- Reduce unnecessary regulatory burden

# Reactor Oversight Process

---



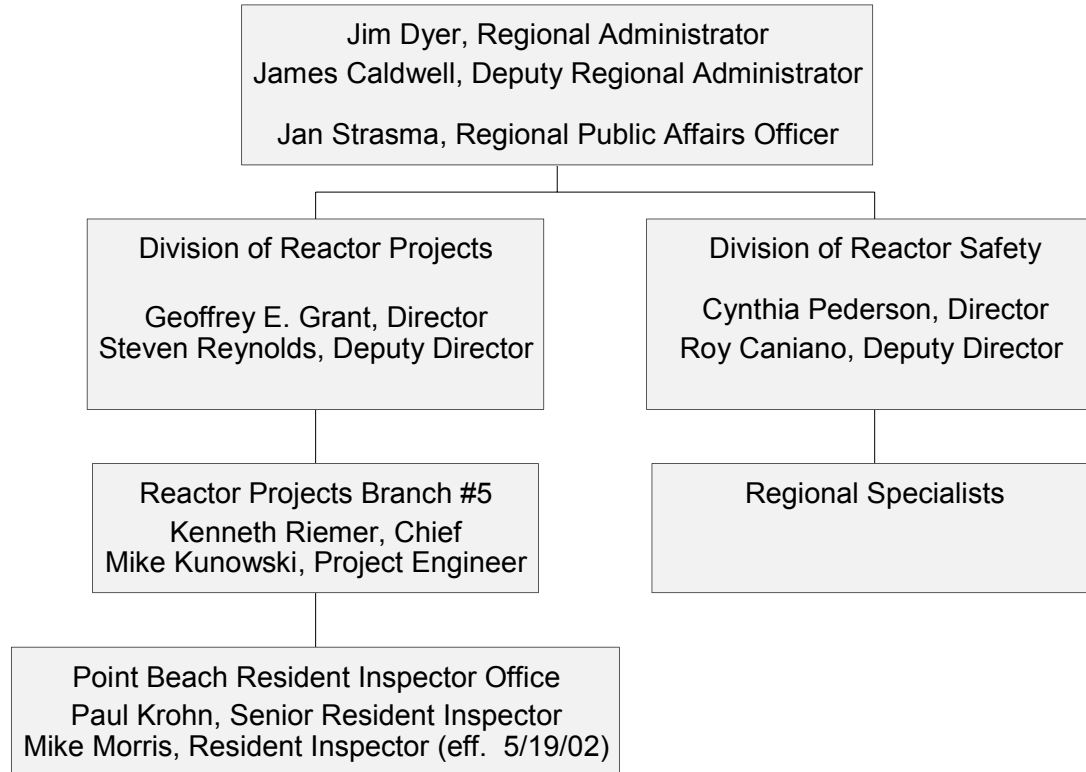
# Key Aspects of the Assessment Program

---

- Objective review of licensee performance
- “Action Matrix” identifies agency response commensurate with safety significance
- Increasing safety significance results in:
  - Increased levels of inspection
  - Involvement of higher levels of NRC and Licensee management
  - Increased regulatory action
- Plant specific assessment information on NRC public web site

# Regional Organization

---



# Annual Licensee Assessment Meeting

---

- A public forum for discussion of the licensee's performance
- NRC will address the licensee performance issues identified in the Annual Assessment Letter
- Licensee will respond to the information in the letter and inform the NRC of new or existing programs to maintain or improve their performance

# ROP Action Matrix Summary for 2002

---

- Column 1 - Licensee Response
- Column 2 - Regulatory Response
- Column 3 - Degraded Cornerstone
- Column 4 - Multiple/ Repetitive Degraded Cornerstone
- Column 5 - Unacceptable Performance

(Nationwide number does not contain Davis Besse)

|            | Column 1 | Column 2 | Column 3 | Column 4 | Column |
|------------|----------|----------|----------|----------|--------|
| Nationwide | 59       | 33       | 7        | 3        | 0      |
| Region I   | 9        | 14       | 2        | 1        | 0      |
| Region II  | 26       | 4        | 1        | 1        | 0      |
| Region III | 11       | 10       | 2        | 0        | 0      |
| Region IV  | 13       | 5        | 2        | 1        | 0      |

# Security & Safeguards Update

---

- Creation of Office of Nuclear Security and Incident Response
- Top-to-Bottom Review of Security Program Initiated
- Issuance of Orders/ Interim Compensatory Measures (ICM)
- Verification of Licensee Actions on ICM



# Security & Safeguards Update

---

- Proposed Revisions to Design Basis Threat
- Pending Orders on Fatigue/Guard Training
- Initiation of Pilot Force-on-Force Exercise Program

- **Name of Plant:** Point Beach Power Plant
- **Plant Operator:** Nuclear Management Company
- **Number of Units:** 2 units
- **Reactor Type and Vendor:** Pressurized Water Reactor-Westinghouse
- **Location:** Two Creeks, Wisconsin
- **Power Output (electrical):** 545 MWe
- **Source of Circulating Water:** Lake Michigan

# Major Plant Activities in 2002

---

- **February 2002-** Unit 2. Safety Injection Pump failure due to gas binding
  - Resulted in forced shutdown
  - White finding issued
- **February 2002-** Unit 1 and Unit 2. Emergency Preparedness Drill Self-Critique
  - Deficiencies result in a White finding.
- **April 2002-** Unit 2 refueling shutdown.
  - Visual inspections of the Unit 2 Reactor Pressure Vessel Head reveals no signs of degradation

# Major Plant Activities in 2002 (cont'd)

---

- **August 2002-** Units 1 and 2. Emergency Preparedness Drill deficiency noted by Residents concerning timeliness of Alert declaration
  - Regulatory review ongoing
- **September 2002-** Unit 1 refueling shutdown. Inspections of the Unit 1 Reactor Pressure Vessel Head revealed no signs of degradation
- **October 2002-** Units 1 and 2. Potential Common Mode Failure of AFW pumps due to orifice plugging identified by licensee
  - Regulatory review ongoing

# Plant Performance Summary

---

- PBNP operated in a safe manner overall
- Fully met all cornerstone objectives
- Plant performance for the most recent quarter was within the Regulatory Response Column
  - One White finding in the Mitigating Systems cornerstone (unit 2)
  - One White finding in the Emergency Preparedness cornerstone (both units)

# Plant Performance Summary (cont'd)

---

- Determination has been made: the Red finding associated with the common mode failure of the Auxiliary Feedwater (AFW) System due to loss of instrument air will not be treated as an Old Design Issue
- Final determination will be made on the risk evaluation for the current AFW orifice issue

# Greater than GREEN

## PIs and Findings (Details)

---

- Performance indicator for Scrams With Loss of Normal Heat Removal was White during the 1st quarter of assessment period
- One White finding in the Mitigating Systems cornerstone
  - associated with failure of a safety injection pump due to gas binding
- One White finding in the Emergency Preparedness cornerstone
  - associated with a February 2002 biennial EP exercise
  - licensee failed to adequately critique and identify two exercise performance issues

# Contacts for additional information for:

---

(Enter plant name here)

- Regional Public Affairs Officer:

- ▶ Name: Jan Strasma
- ▶ Phone: 630-829-9663

- State Liaison Officer:

- ▶ Name: Roland Lickus
- ▶ Phone: 630-829-9660

- Branch Chief:

- ▶ Name: Kenneth Riemer
- ▶ Phone: 630-829-9606

- Senior Resident Inspector:

- ▶ Name: Paul Krohn
- ▶ Phone: 920-755-2309



# Contacting the NRC

---

- Report an emergency
  - ▶ (301) 816-5100 (call collect)
  
- Report a safety concern:
  - ▶ (800) 695-7403
  - ▶ Allegation@nrc.gov
  
- General information or questions
  - ▶ [www.nrc.gov](http://www.nrc.gov)
  - ▶ Select “What We Do” for Public Affairs