

Annual Assessment Meeting

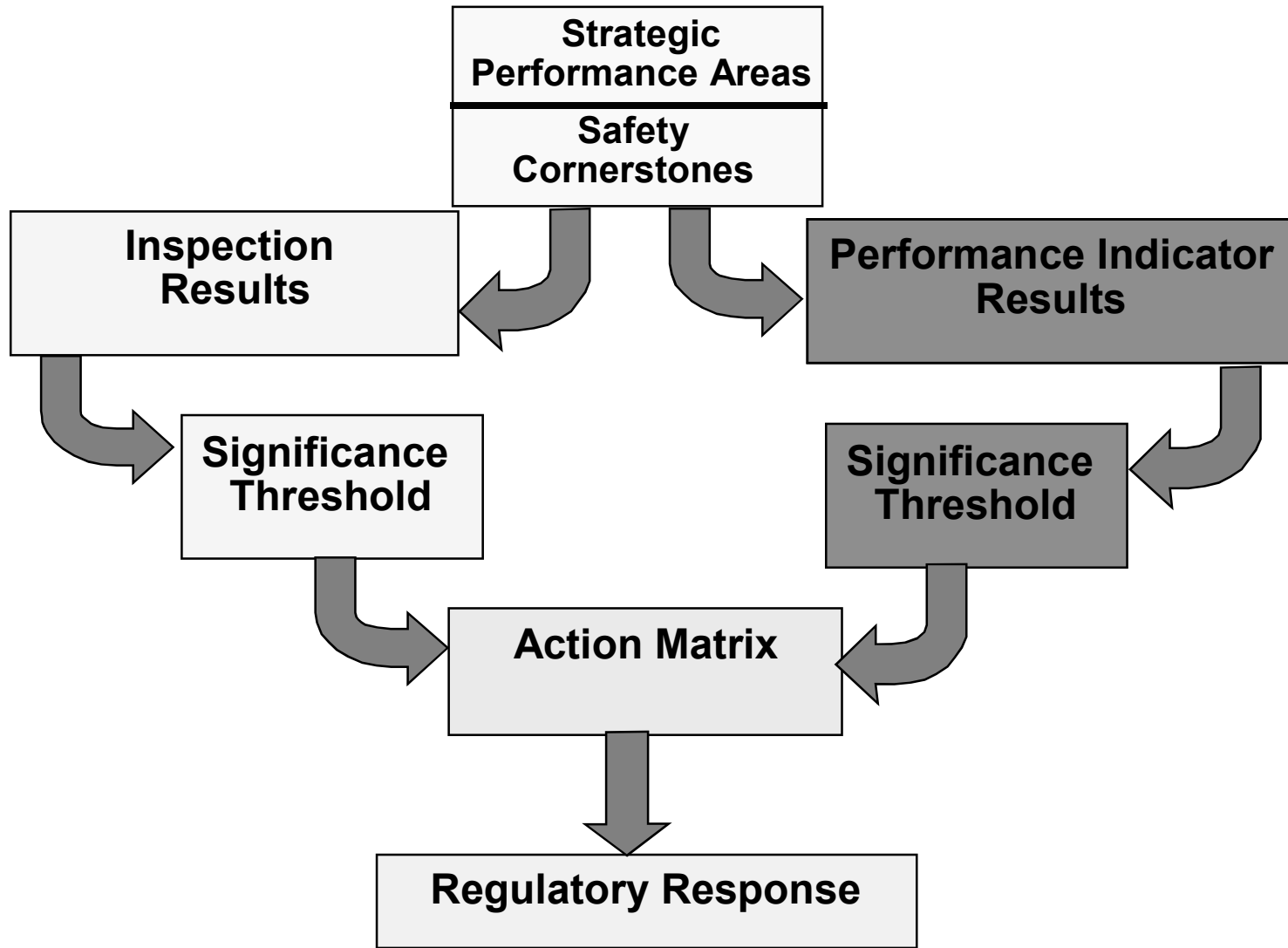


Nuclear Regulatory Commission

NRC Performance Goals

- Maintain safety and protect the environment
- Enhance public confidence
- Improve effectiveness, efficiency, and realism of processes and decision making
- Reduce unnecessary regulatory burden

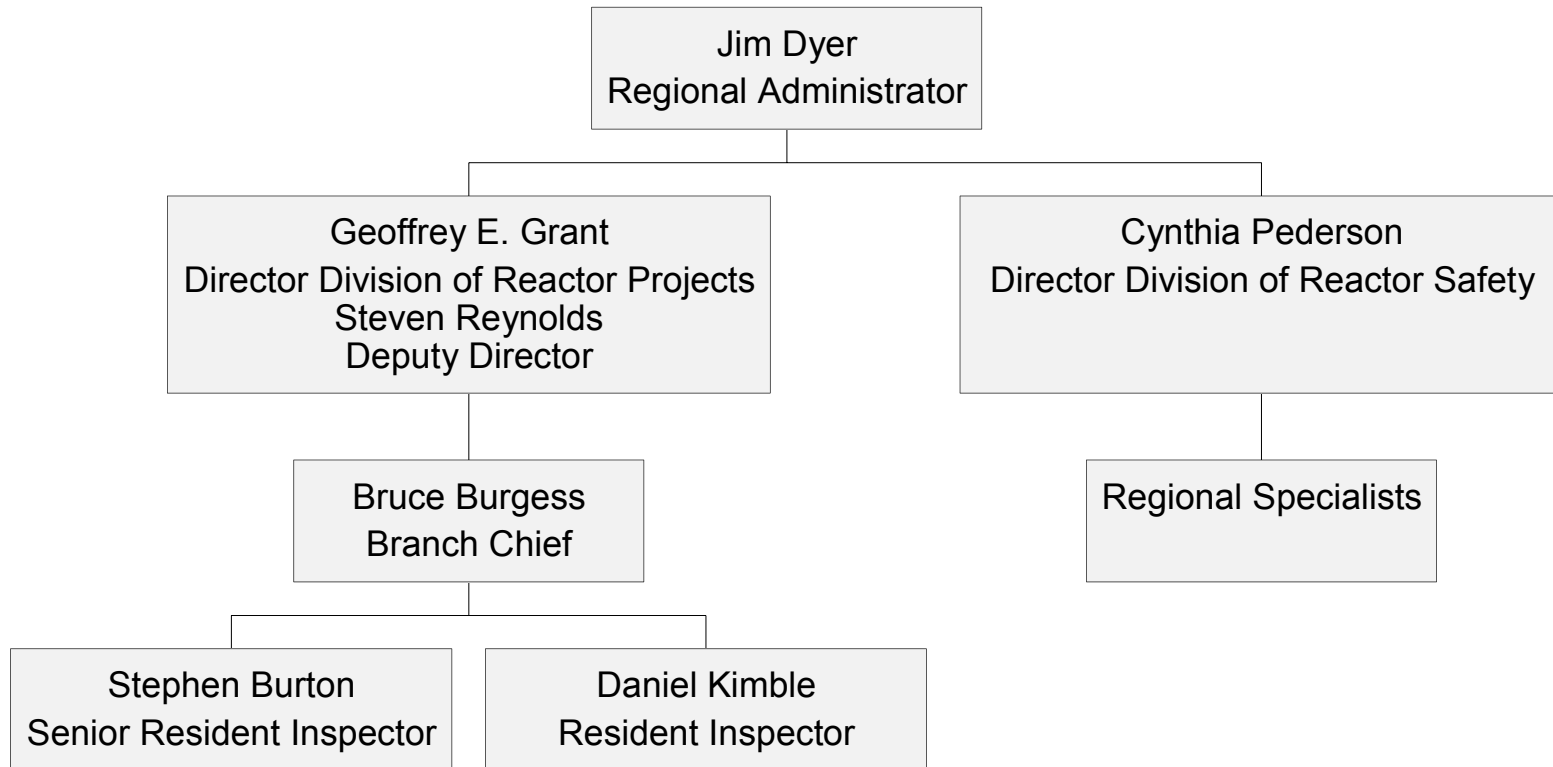
Reactor Oversight Process



Key Aspects of the Assessment Program

- Objective review of licensee performance
- “Action Matrix” identifies agency response commensurate with safety significance
- Increasing safety significance results in:
 - Increased levels of inspection
 - Involvement of higher levels of NRC and Licensee management
 - Increased regulatory action
- Plant specific assessment information on NRC public web site

Regional Organization



Annual Licensee Assessment Meeting

- A public forum for discussion of the licensee's performance
- NRC will address the licensee's performance issues identified in the Annual Assessment Letter
- Licensee will respond to the information in the letter and inform the NRC of new or existing programs to maintain or improve their performance

ROP Action Matrix Summary for 2002

- Column 1 - Licensee Response
- Column 2 - Regulatory Response
- Column 3 - Degraded Cornerstone
- Column 4 - Multiple/ Repetitive Degraded Cornerstone
- Column 5 - Unacceptable Performance

(Nationwide number does not contain Davis Besse)

	Column 1	Column 2	Column 3	Column 4	Column 5
Nationwide	59	33	7	3	0
Region I	9	14	2	1	0
Region II	26	4	1	1	0
Region III	11	10	2	0	0
Region IV	13	5	2	1	0

Security & Safeguards Update

- Creation of Office of Nuclear Security and Incident Response
- Top-to-Bottom Review of Security Program Initiated
- Issuance of Orders/ Interim Compensatory Measures (ICM)
- Verification of Licensee Actions on ICM

Security & Safeguards Update

- Proposed Revisions to Design Basis Threat
- Pending Orders on Fatigue/Guard Training
- Initiation of Pilot Force-on-Force Exercise Program

- Name of Plant: Monticello
- Plant Operator: Nuclear Management Company
- Number of Units: 1
- Reactor Type and Vendor: BWR 4/ GE
- Location: Monticello, Mn.
- Power Output (electrical): 615 MW
- Source of Circulating Water: Mississippi River

Major Plant Activities in 2002

Licensee is planning for a 25 day outage and movement to a 24 month refueling interval

Licensee was performing more on-line maintenance to support shorter refueling outages

Licensee and Resident staff responded to two significant transients

- Reactor scram in January due to a turbine control system malfunction
- Single-loop reactor operations in June due to an oil filter gasket failure on No.12 recirculation pump motor generator

Plant Performance Summary

Performance Indicators

All Green Performance Indicators

Inspection Findings

All Green Inspection Findings

Greater than GREEN

NONE

Contacts for additional information for:

Monticello

- Regional Public Affairs Officer:

- ▶ Name: Jan Strasma
- ▶ Phone: 630-829-9663

- State Liaison Officer:

- ▶ Name: Roland Lickus
- ▶ Phone: 630-829-9660

- Branch Chief:

- ▶ Name: Bruce Burgess
- ▶ Phone: 630-829-9629

- Senior Resident Inspector:

- ▶ Name: Stephen Burton
- ▶ Phone: 763-295-2066

Contacting the NRC

- Report an emergency
 - ▶ (301) 816-5100 (call collect)
- Report a safety concern:
 - ▶ (800) 695-7403
 - ▶ Allegation@nrc.gov
- General information or questions
 - ▶ www.nrc.gov
 - ▶ Select “What We Do” for Public Affairs