

# Annual Assessment Meeting

---



Nuclear Regulatory Commission

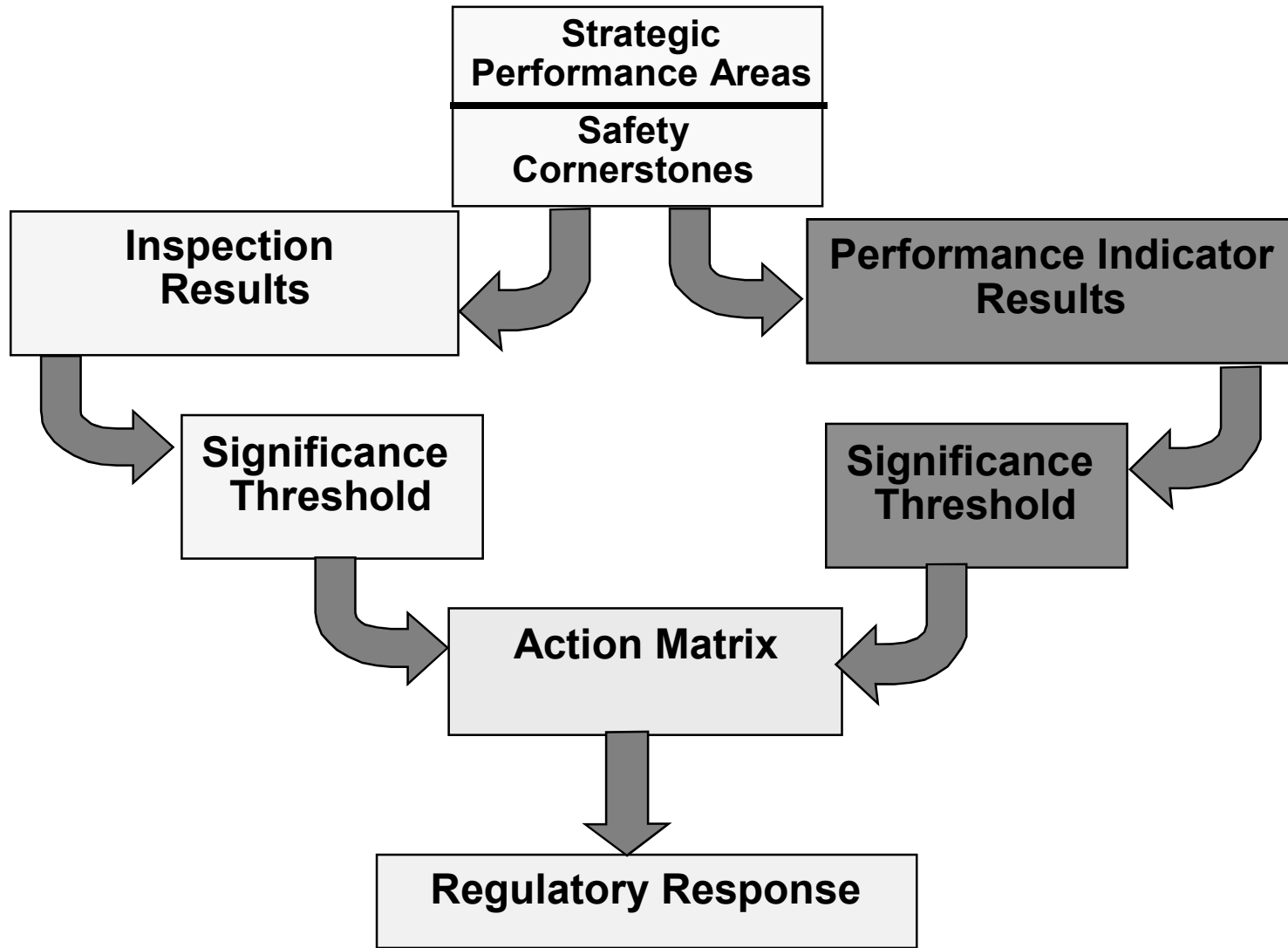
# NRC Performance Goals

---

- Maintain safety and protect the environment
- Enhance public confidence
- Improve effectiveness, efficiency, and realism of processes and decision making
- Reduce unnecessary regulatory burden

# Reactor Oversight Process

---



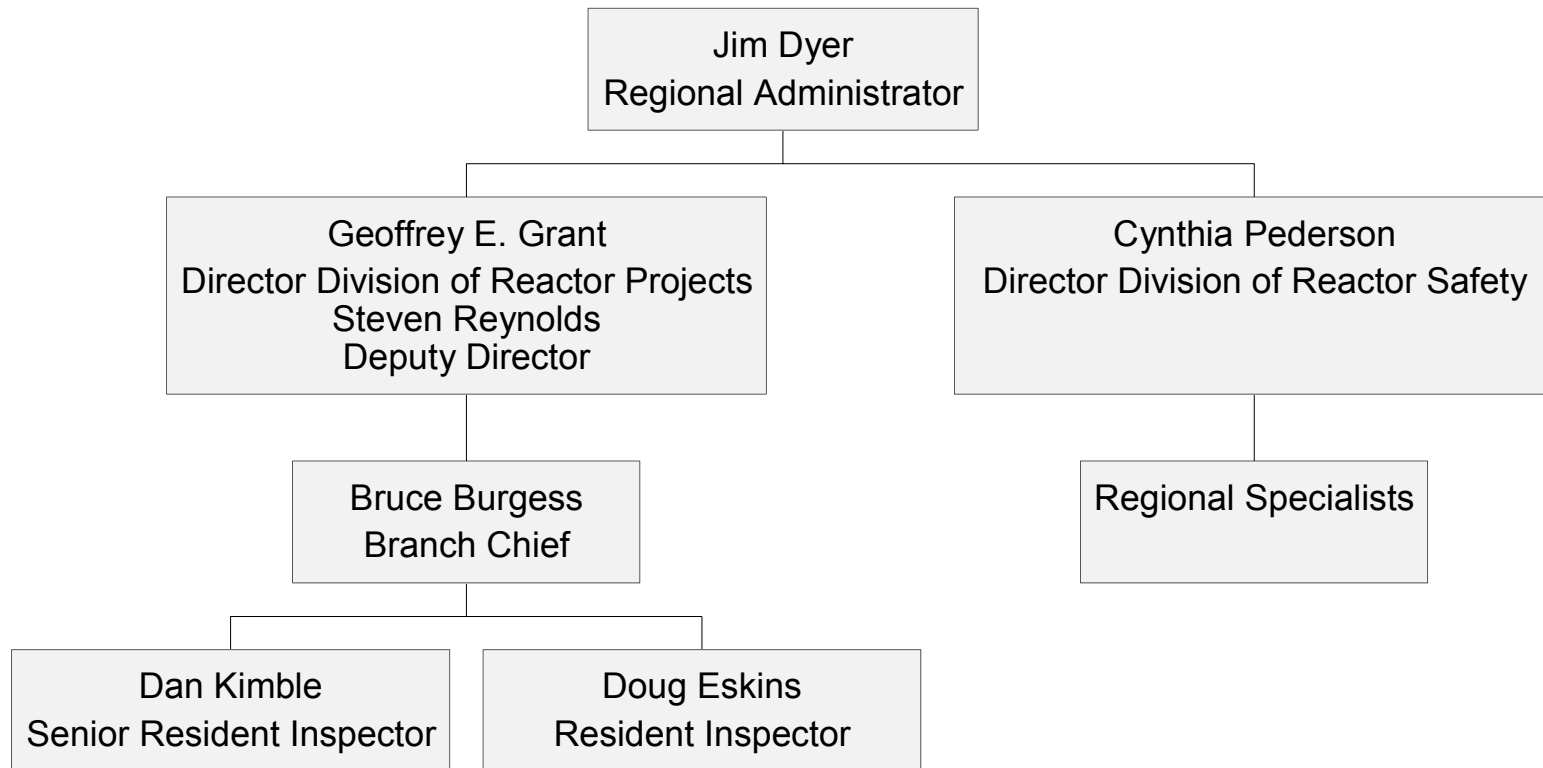
# Key Aspects of the Assessment Program

---

- Objective review of licensee performance
- “Action Matrix” identifies agency response commensurate with safety significance
- Increasing safety significance results in:
  - Increased levels of inspection
  - Involvement of higher levels of NRC and licensee management
  - Increased regulatory action
- Plant specific assessment information on NRC public web site

# Regional Organization

---



# Annual Licensee Assessment Meeting

---

- A public forum for discussion of the licensee's performance
- NRC will address the licensee performance issues identified in the Annual Assessment Letter
- Licensee will respond to the information in the letter and inform the NRC of new or existing programs to maintain or improve their performance

# ROP Action Matrix Summary for 2002

---

- Column 1 - Licensee Response
- Column 2 - Regulatory Response
- Column 3 - Degraded Cornerstone
- Column 4 - Multiple/ Repetitive Degraded Cornerstone
- Column 5 - Unacceptable Performance

(Nationwide number does not contain Davis Besse)

	Column 1	Column 2	Column 3	Column 4	Column 5
Nationwide	59	33	7	3	0
Region I	9	14	2	1	0
Region II	26	4	1	1	0
Region III	11	10	2	0	0
Region IV	13	5	2	1	0

# Security & Safeguards Update

---

- Creation of Office of Nuclear Security and Incident Response
- Top-to-Bottom Review of Security Program Initiated
- Issuance of Orders/ Interim Compensatory Measures (ICMs)
- Verification of Licensee Actions on ICM



# Security & Safeguards Update

---

- Proposed Revisions to Design Basis Threat
- Pending Orders on Fatigue/Guard Training
- Initiation of Pilot Force-on-Force Exercise Program

- Name of Plant: LaSalle County Station
- Plant Operator: Exelon
- Number of Units: 2
- Reactor Type and Vendor: BWR 5/ GE
- Location: Seneca, IL
- Power Output (electrical): 1200 MWe/Unit
- Source of Circulating Water: LaSalle Lake

# Major Plant Activities in 2002

---

Unit 1 Refueling Outage L1R09: 1/10 -2/3

Unit 2 Maintenance Outage L2P01: 4/9 -4/24

Unit 1 Maintenance Outage L1P03: 5/18 - 5/26

Unit 2 Maintenance Outage L2P02: 10/25 - 11/1

# Plant Performance Summary

---

Performance Indicators

All Green Performance Indicators

Inspection Findings

All Green Inspection Findings

# Greater than GREEN

---

NONE

# Contacts for additional information for:

---

## LaSalle County Station

- Regional Public Affairs Officer:
  - ▶ Name: Jan Strasma
  - ▶ Phone: 630-829-9663
  
- State Liaison Officer:
  - ▶ Name: Roland Lickus
  - ▶ Phone: 630-829-9660
  
- Branch Chief:
  - ▶ Name: Bruce Burgess
  - ▶ Phone: 630-829-9629
  
- Senior Resident Inspector:
  - ▶ Name: Eric Duncan (Daniel Kimble)
  - ▶ Phone: 815-357-8611

# Contacting the NRC

---

- Report an emergency
  - ▶ (301) 816-5100 (call collect)
  
- Report a safety concern:
  - ▶ (800) 695-7403
  - ▶ Allegation@nrc.gov
  
- General information or questions
  - ▶ [www.nrc.gov](http://www.nrc.gov)
  - ▶ Select “What We Do” for Public Affairs