

# Annual Assessment Meeting

---



Nuclear Regulatory Commission

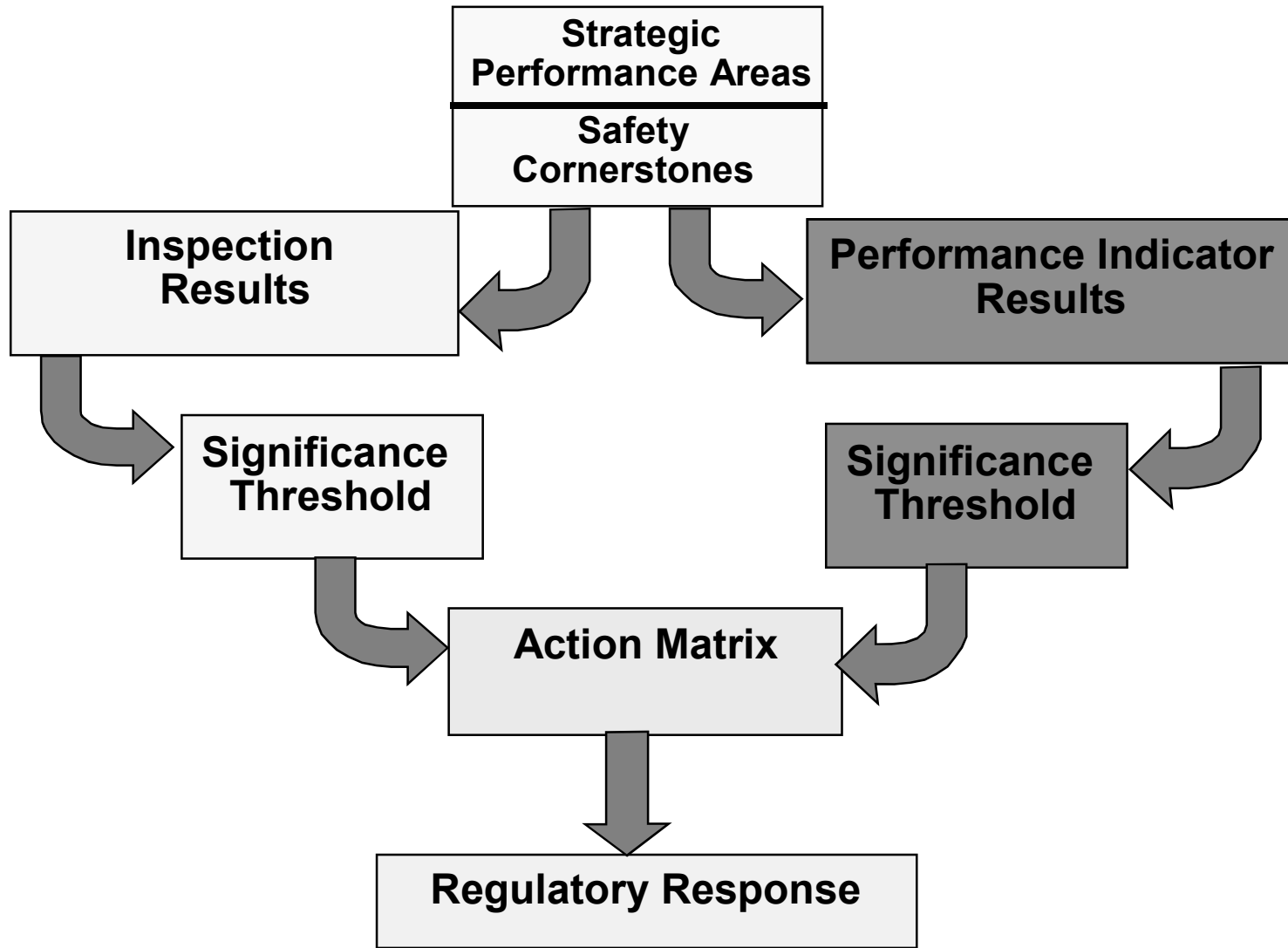
# NRC Performance Goals

---

- Maintain safety and protect the environment
- Enhance public confidence
- Improve effectiveness, efficiency, and realism of processes and decision making
- Reduce unnecessary regulatory burden

# Reactor Oversight Process

---



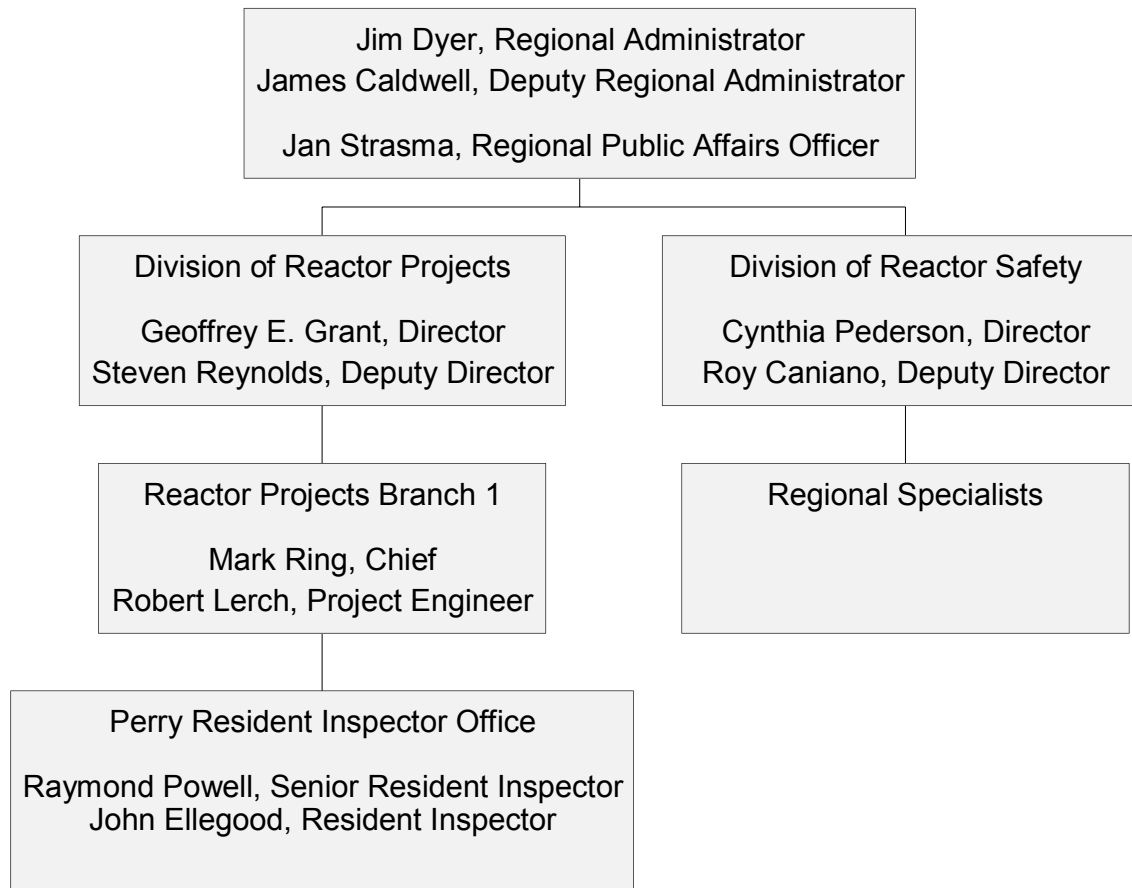
# Key Aspects of the Assessment Program

---

- Objective review of licensee performance
- “Action Matrix” identifies agency response commensurate with safety significance
- Increasing safety significance results in:
  - Increased levels of inspection
  - Involvement of higher levels of NRC and Licensee management
  - Increased regulatory action
- Plant specific assessment information on NRC public web site

# Regional Organization

---



# Annual Licensee Assessment Meeting

---

- A public forum for discussion of the licensee's performance
- NRC will address the licensee performance issues identified in the Annual Assessment Letter
- Licensee will respond to the information in the letter and inform the NRC of new or existing programs to maintain or improve their performance

# ROP Action Matrix Summary for 2002

---

- Column 1 - Licensee Response
- Column 2 - Regulatory Response
- Column 3 - Degraded Cornerstone
- Column 4 - Multiple/ Repetitive Degraded Cornerstone
- Column 5 - Unacceptable Performance

(Nationwide number does not contain Davis Besse)

	Column 1	Column 2	Column 3	Column 4	Column 5
Nationwide	59	33	7	3	0
Region I	9	14	2	1	0
Region II	26	4	1	1	0
Region III	11	10	2	0	0
Region IV	13	5	2	1	0

# Security & Safeguards Update

---

- Creation of Office of Nuclear Security and Incident Response
- Top-to-Bottom Review of Security Program Initiated
- Issuance of Orders/ Interim Compensatory Measures (ICM)
- Verification of Licensee Actions on ICM



# Security & Safeguards Update

---

- Proposed Revisions to Design Basis Threat
- Pending Orders on Fatigue/Guard Training
- Initiation of Pilot Force-on-Force Exercise Program

- Name of Plant: Perry Nuclear Power Plant
- Plant Operator: First Energy Operating Company
- Number of Units: 1 operating
- Reactor Type and Vendor: BWR-6, GE
- Location: Perry, Ohio
- Power Output (electrical): 1261 MWe
- Source of Circulating Water: Lake Erie

# Major Plant Activities in 2002

---

No Refueling Outage

Shutdown in June 2002 due to generator exciter ground

Automatic shutdown in September during turbine testing

Power reductions due to equipment problems

# Plant Performance Summary

---

Operated safely

Fully met all Cornerstone Objectives

In Regulatory Response Band of Action Matrix

10 GREEN Findings

Human Performance with some of the findings

# Greater than GREEN PIs and Findings (Details)

---

One WHITE finding

Low to moderate increased importance to safety

High Pressure Core Spray pump failure to start in  
October 2002

IP 95001 Inspection of Licensee Actions TBD

# Contacts for additional information for:

---

## PERRY

- Regional Public Affairs Officer:
  - ▶ Name: Jan Strasma
  - ▶ Phone: 630-829-9663
  
- State Liaison Officer:
  - ▶ Name: Roland Lickus
  - ▶ Phone: 630-829-9660
  
- Branch Chief:
  - ▶ Name: Mark Ring
  - ▶ Phone: 630-829-9703
  
- Senior Resident Inspector:
  - ▶ Name: Ray Powell
  - ▶ Phone 440-259-3610

# Contacting the NRC

---

- Report an emergency
  - ▶ (301) 816-5100 (call collect)
  
- Report a safety concern:
  - ▶ (800) 695-7403
  - ▶ Allegation@nrc.gov
  
- General information or questions
  - ▶ [www.nrc.gov](http://www.nrc.gov)
  - ▶ Select “What We Do” for Public Affairs