

Annual Assessment Meeting

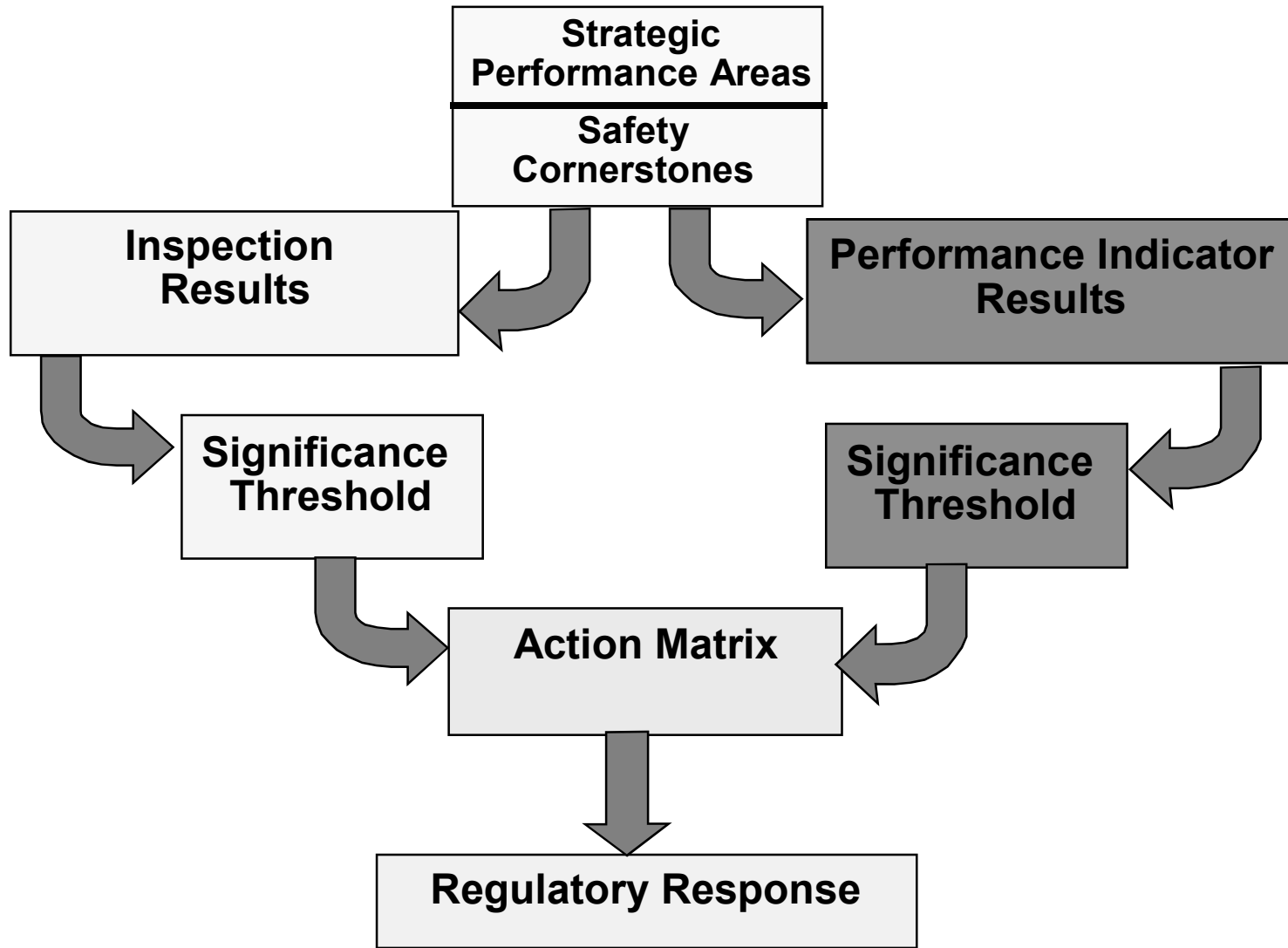


Nuclear Regulatory Commission

NRC Performance Goals

- Maintain safety and protect the environment
- Enhance public confidence
- Improve effectiveness, efficiency, and realism of processes and decision making
- Reduce unnecessary regulatory burden

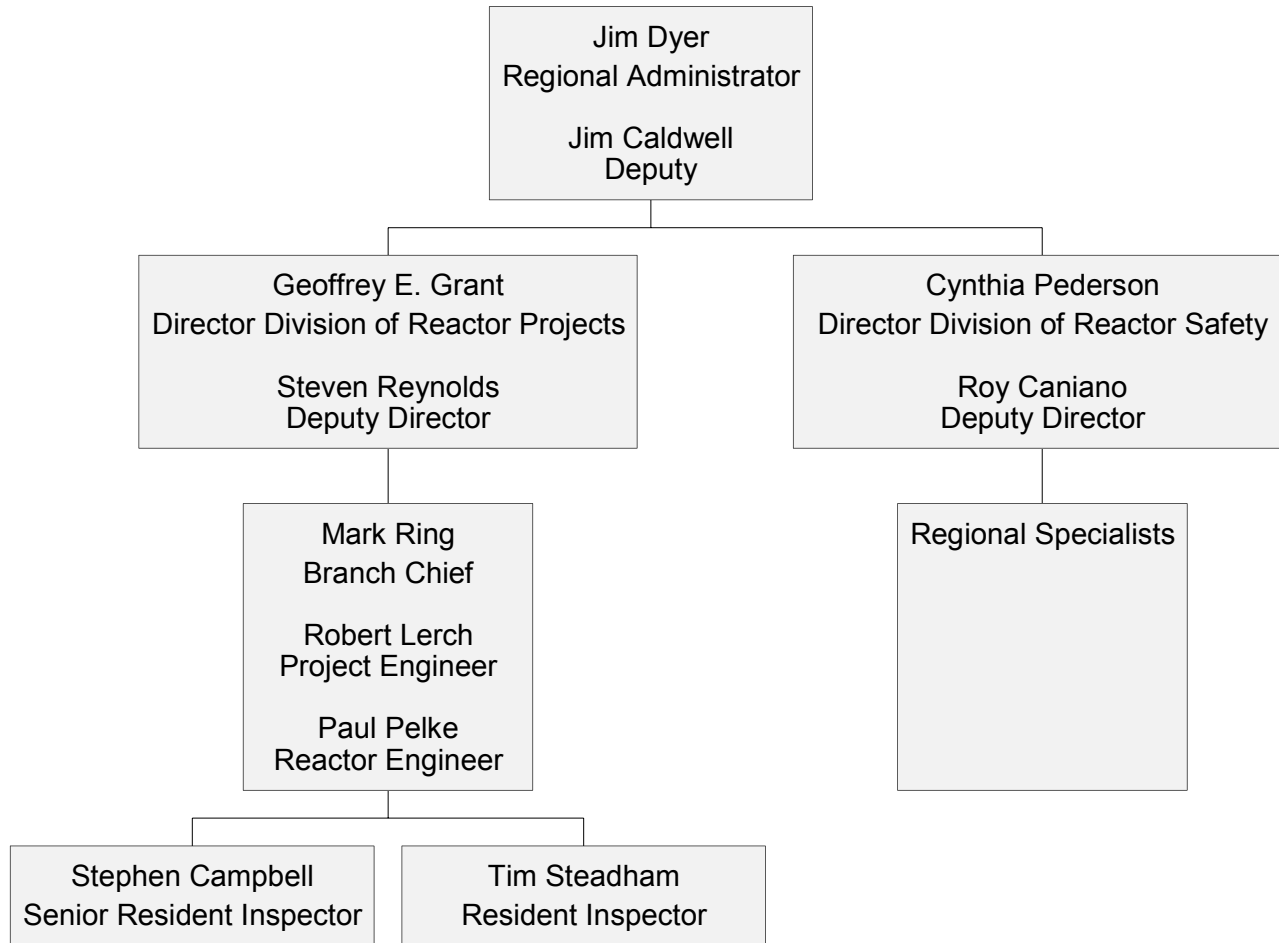
Reactor Oversight Process



Key Aspects of the Assessment Program

- Objective review of licensee performance
- “Action Matrix” identifies agency response commensurate with safety significance
- Increasing safety significance results in:
 - Increased levels of inspection
 - Involvement of higher levels of NRC and Licensee management
 - Increased regulatory action
- Plant specific assessment information on NRC public web site

Regional Organization



Annual Licensee Assessment Meeting

- A public forum for discussion of the licensee's performance
- NRC will address the licensee performance issues identified in the Annual Assessment Letter
- Licensee will respond to the information in the letter and inform the NRC of new or existing programs to maintain or improve their performance

ROP Action Matrix Summary for 2002

- Column 1 - Licensee Response
- Column 2 - Regulatory Response
- Column 3 - Degraded Cornerstone
- Column 4 - Multiple/ Repetitive Degraded Cornerstone
- Column 5 - Unacceptable Performance

(Nationwide number does not contain Davis Besse)

	Column 1	Column 2	Column 3	Column 4	Column 5
Nationwide	59	33	7	3	0
Region I	9	14	2	1	0
Region II	26	4	1	1	0
Region III	11	10	2	0	0
Region IV	13	5	2	1	0

Security & Safeguards Update

- Creation of Office of Nuclear Security and Incident Response
- Top-to-Bottom Review of Security Program Initiated
- Issuance of Orders/ Interim Compensatory Measures (ICM)
- Verification of Licensee Actions on ICM

Security & Safeguards Update

- Proposed Revisions to Design Basis Threat
- Pending Orders on Fatigue/Guard Training
- Initiation of Pilot Force-on-Force Exercise Program

- Name of Plant: Fermi 2
- Plant Operator: Detroit Edison
- Number of Units: 1 operating
- Reactor Type and Vendor: BWR - GE
- Location: Near Monroe, Michigan
- Power Output (electrical): 1150 MWe
- Source of Circulating Water: Lake Erie

Major Plant Activities in 2002

No Refueling Outage

Automatic Shutdown in October (Circ Water)

Manual Shutdown in December (MPU-3)

Several Power Reductions Due to Equipment Problems During Cycle

Plant Performance Summary

Operated Safely

Fully Met All Cornerstone Objectives

In Licensee Response Band of Action Matrix

7 GREEN Findings

Human Performance Issues

Greater than GREEN PIs and Findings (Details)

- No Findings Greater Than GREEN
- No Performance Indicators Greater Than GREEN

Contacts for additional information for:

Fermi 2

- ▶ Regional Public Affairs Officer:

- ▶ Name: Jan Strasma

- ▶ Phone: 630-829-9663

- ▶ State Liaison Officer:

- ▶ Name: Roland Lickus

- ▶ Phone: 630-829-9660

- ▶ Branch Chief:

- ▶ Name: Mark Ring

- ▶ Phone: 630-829-9703

- ▶ Senior Resident Inspector:

- ▶ Name: Steve Campbell

- ▶ Phone: 734-586-2798

Contacting the NRC

- Report an emergency
 - ▶ (301) 816-5100 (call collect)

- Report a safety concern:
 - ▶ (800) 695-7403
 - ▶ Allegation@nrc.gov

- General information or questions
 - ▶ www.nrc.gov
 - ▶ Select “What We Do” for Public Affairs