

**Table 6.1  
STATION EMERGENCY PLAN MINIMUM STAFFING REQUIREMENTS**

Major Functional Area	Major Tasks	Position Title or Expertise	On Shift	Capability for Additions	
				60 min	90 min
Plant Operations and Assessment of Operational Aspects		Shift Manager (SRO)	1	--	--
		Unit Supervisor (SRO)	1##	--	--
		Plant Control Operators	3@	--	--
		Non-Licensed Operators	4	--	--
Emergency Direction and Control (Emergency Director)		Emergency Director	1*	1	--
Notification/Communication	Notify licensee, State, Local, and Federal personnel & maintain communication	Communicators	1	2	1
		EOF Support Supervisor	--	--	1
		NRC Communicator	1		
Radiological Accident Assessment and Support of Operational Accident Assessment	Emergency Operations Facility (EOF) Director	Recovery Manager	--	--	1
	Radiation Protection & Dose Assessment	Radiation Protection Coordinator	--	1	--
		Dose Assessment Supervisor	--	--	1
		Rad Assessment Staff	--	1	2
	Offsite Surveys (Field Teams)	Survey Team Personnel	--	2#	2
	Onsite [out-of-plant (HP Tech)]	Survey Team Personnel	--	1	1
	Radiation Protection & Dose Assessment:	a. Access Control b. HP coverage for repair, corrective actions, search and rescue, first aid, & firefighting c. Personnel Monitoring d. Dosimetry e. Dose Assessment f. In-Plant Surveys	HP Technicians	2	3
Chemistry/Radiochemistry			Chemistry Technicians	1	1

Note: The Capability for Additions column refers to reporting times. Reporting location may be the OSC, TSC, or EOF.

# Rad monitoring team personnel (see Figure 6.3) -- 2 are dispatched from the vicinity of the plant within 60 minutes.

\* Indicates the minimum number of individuals onshift with the capabilities of performing these functions. These individuals may also fulfill other responsibilities identified in this table.

## As a result of having a common control room, the Unit Supervisor is shared between the two units.

@ One PCO will be assigned to the unaffected unit.

Table 6.1 (cont'd)

Major Functional Area	Major Tasks	Position Title or Expertise	On Shift	Capability for Additions	
				60 min	90 min
Plant System Engineering	Technical Support	Shift Technical Advisor	1	--	--
		Operations Coordinator	--	1	--
		Core/Thermal Hydraulics	--	1	--
		Electrical	--	1	--
		Mechanical	--	1	--
		Technical Support Coordinator	--	1	--
		Severe Accident Management Coordinator	--	1	--
		Engineering Support Supervisor	--	--	1
Repair and Corrective Actions	Management of Damage Control Teams	Damage Control Team Coordinator	--	1	--
		OSC Coordinator	--	1	--
	Communications with In-plant Teams	TSC Radio Communicator	--	1	--
	Repair and Corrective Actions (onshift requirements may be fulfilled by NLOs) **	Mechanical Maintenance/ Rad Waste Operator	1*	1	--
		Electrical Maintenance/ Instrument and Control Technician	1*	1	1
Firefighting	--	--	Fire Brigade per Technical Requirements Manual	Local Support	
Rescue Operations and First Aid	--	--	2*	Local Support	
Site Access Control and Personnel Accountability	Security, firefighting communications, personnel accountability	Security Personnel	All per Security plan		
		Security Coordinator	--	1	--

15

24

14

plus fire brigade and security plan required personnel

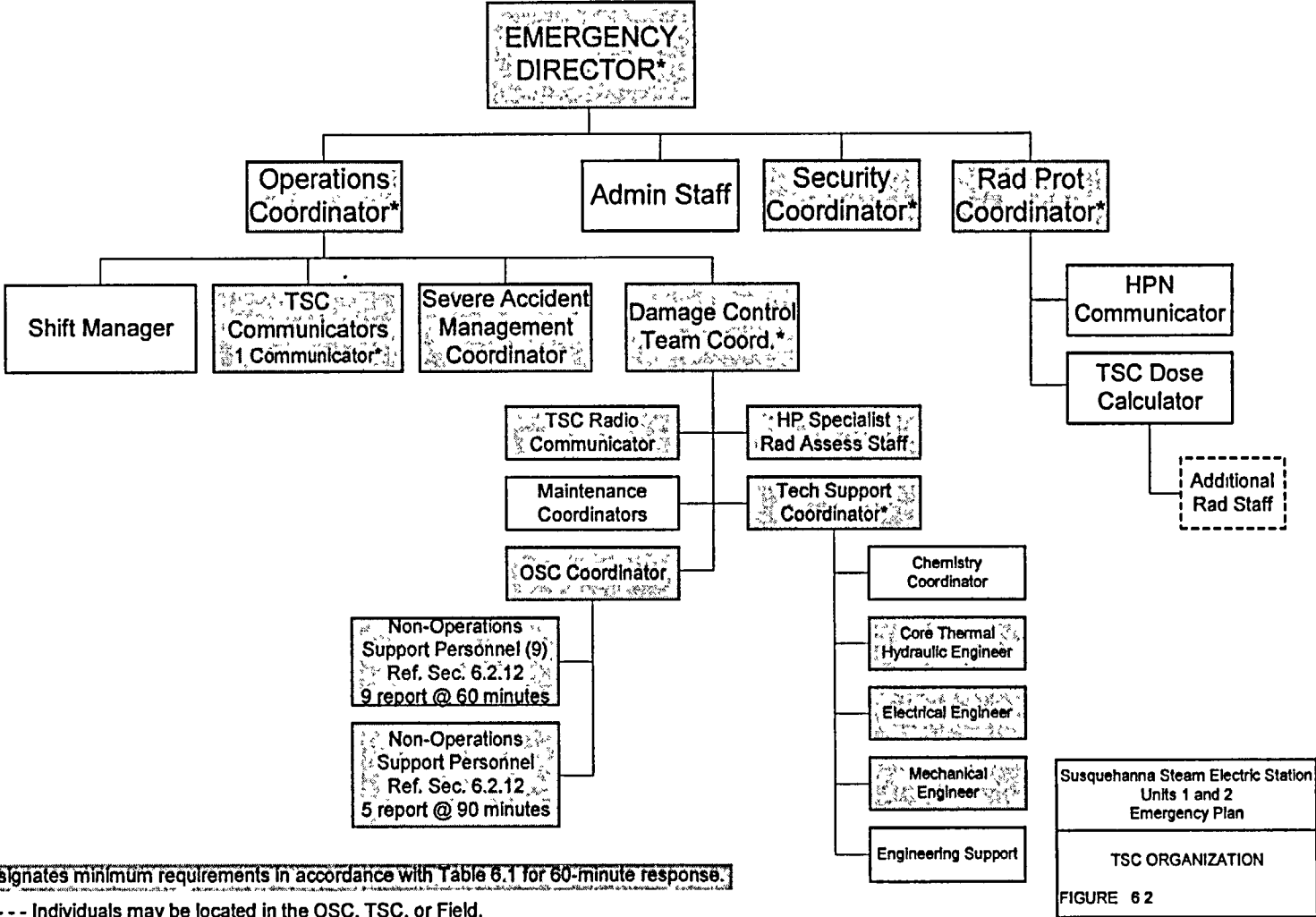
Note: The Capability for Additions column refers to reporting times. Reporting location may be the OSC, TSC, or EOF.

# Rad monitoring team personnel (see Figure 6.3) – 2 are dispatched from the vicinity of the plant within 60 minutes.

\* Indicates the minimum number of individuals onshift with the capabilities of performing these functions. These individuals may also fulfill other responsibilities identified in this table.

\*\* Fulfilled by NLOs on-shift to provide initial damage control repair activities until additional support arrives. Such activities include racking breakers, changing fuses, manipulating valves, moving equipment, and starting equipment locally.

# TSC ORGANIZATION



Designates minimum requirements in accordance with Table 6.1 for 60-minute response.

----- Individuals may be located in the OSC, TSC, or Field.

\* Designates positions required for TSC activation.

# EOF ORGANIZATION

