

From: *PK* Paul Krohn *, PK*
To: Burgess, Sonia; Riemer, Kenneth; Spaulding, Deirdre -*nee*
Date: 10/30/02 8:33AM
Subject: Point Beach AFW Common Mode Failure Based on Recirc Orifice Plugging

Ken and Dierdre,

Here is the information I have collected on the AFW recirc orifice plugging common mode failure issue. It is the most current information available as of this morning. More information will be coming out later today, mainly the licensee's preliminary risk assessment and an engineering op eval for the AFWPS.

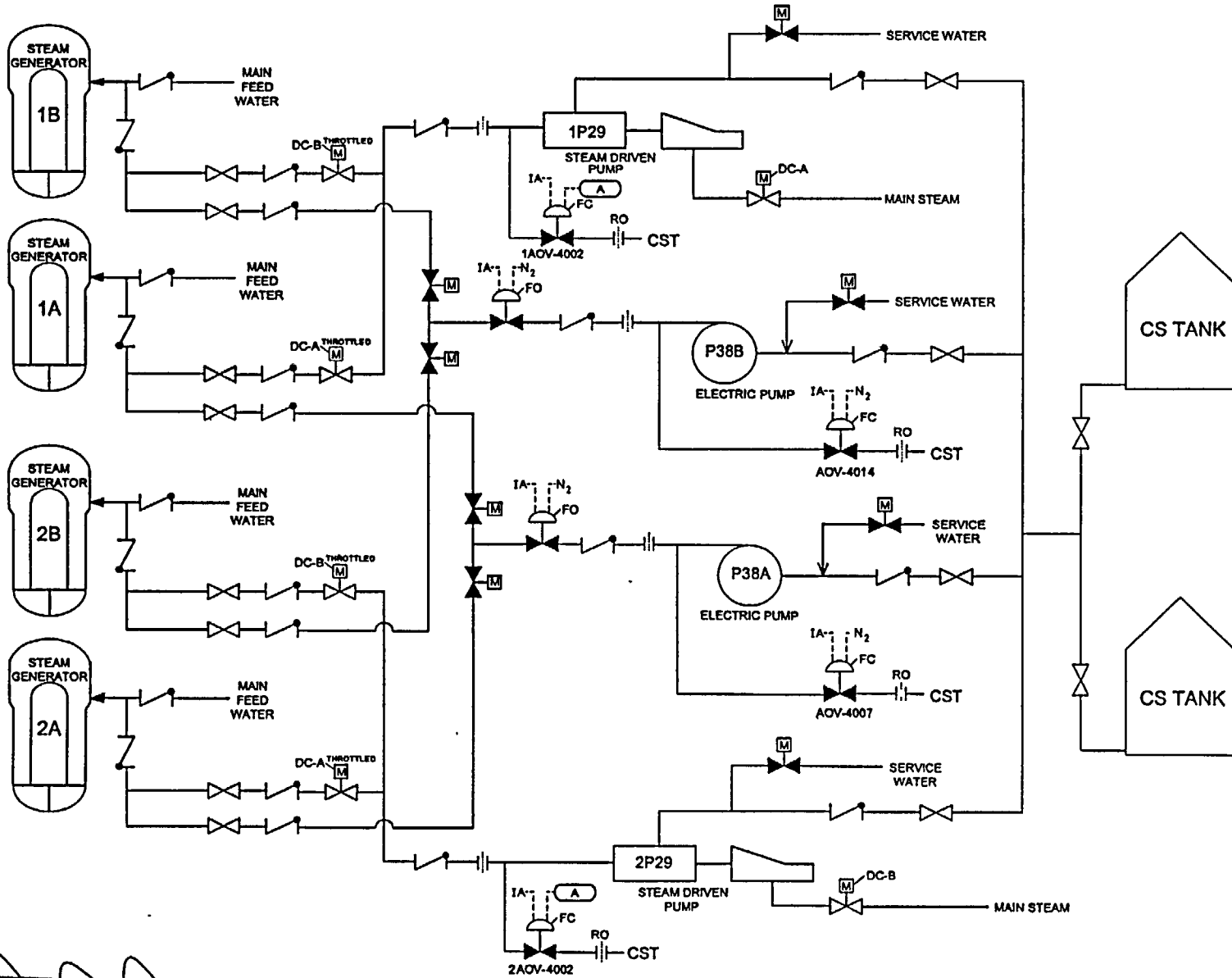
Please forward this to interested parties prior to the 0900 10/30 call. I will be using this to discuss the issue.

Paul Krohn, SRI
Point Beach
10/30/02
0830 CST

CC: Adams, John; Castanedo, Michelle; Dunham, Zachary; Grant, Geoffrey; Kunowski, Michael; Lamb, John; Lanksbury, Roger; Lara, Julio; Morris, R. Michael; Reynolds, Steven

A/285

AFW System - Major Flow Paths



Release