

NOTES:

- FOR GENERAL NOTES, LEGEND & REFERENCE DIMS. SEE DWG. M-200.
- ALL MANUAL & AUTOMATIC VALVE NUMBERS PRECEDED BY AF.
- ELECTRIC PUMPS & DISCHARGE MON'S AUTOMATICALLY STARTED ON OPERATED BY ST SIGNAL, LOW LEVEL IN ANY SG OR BOTH MAIN FEED PUMP BREAKERS OPEN.
- INDIVIDUAL PUMP AND VALVE DETAILS ON DWG. M-217 SH-2.
- VALVE 14C AND ASSOCIATED 2" PIPING WERE INSTALLED VIA AN UNDOCUMENTED MODIFICATION. A DESIGN REVIEW FOR THIS CHANGE WAS DOCUMENTED IN CR 98-0117.
- CHECK VALVE INTERVALS REMAINED PER MR 02-020.

NOTE:
THIS DRAWING REDRAWN FROM
BECKETL DRAWING M-217 REV 53

LEGEND

- RED - ENVIRONMENTALLY QUALIFIED (ALSO QA-SCOPE)
- BLUE - AUGMENTED QUALITY (QA-SCOPE, NON SAFETY-RELATED)
- GREEN - SAFETY-RELATED
- BLACK - NON QA-SCOPE

7. THE SEISMIC DESIGN CLASS 1 TO LOWER CLASS INTERFACE IS NORMALLY THE SAME AS THE SAFETY-RELATED TO NON-SAFETY RELATED INTERFACE THIS IS WHERE A BLUE OR BLACK LINED COMPONENT MEETS A GREEN LINED COMPONENT OR WHERE A BLUE OR BLACK LINED COMPONENT MEETS A RED LINED COMPONENT THAT IS CONNECTED TO A GREEN LINED COMPONENT. CERTAIN BLUE LINED TRENDS MAY HAVE SEISMIC DESIGN CLASS 1 TO LOWER CLASS INTERFACES. TO DETERMINE THESE INTERFACES, COMPS DATA BASE MUST BE CONSULTED.

REVISION: 1 WE (F.F. 13.3) MOD. REQ. 1 NOV 02 Be Energies 2002

NO.	DATE	BY	CHKD	APP'D	DESCRIPTION
1	07-11-01	REVISED PER BCI 0000-0100
2	07-11-01	REVISED PER BCI 0000-0100
3	07-11-01	REVISED PER BCI 0000-0100
4	07-11-01	REVISED PER BCI 0000-0100
5	07-11-01	REVISED PER BCI 0000-0100
6	07-11-01	REVISED PER BCI 0000-0100
7	07-11-01	REVISED PER BCI 0000-0100
8	07-11-01	REVISED PER BCI 0000-0100
9	07-11-01	REVISED PER BCI 0000-0100
10	07-11-01	REVISED PER BCI 0000-0100

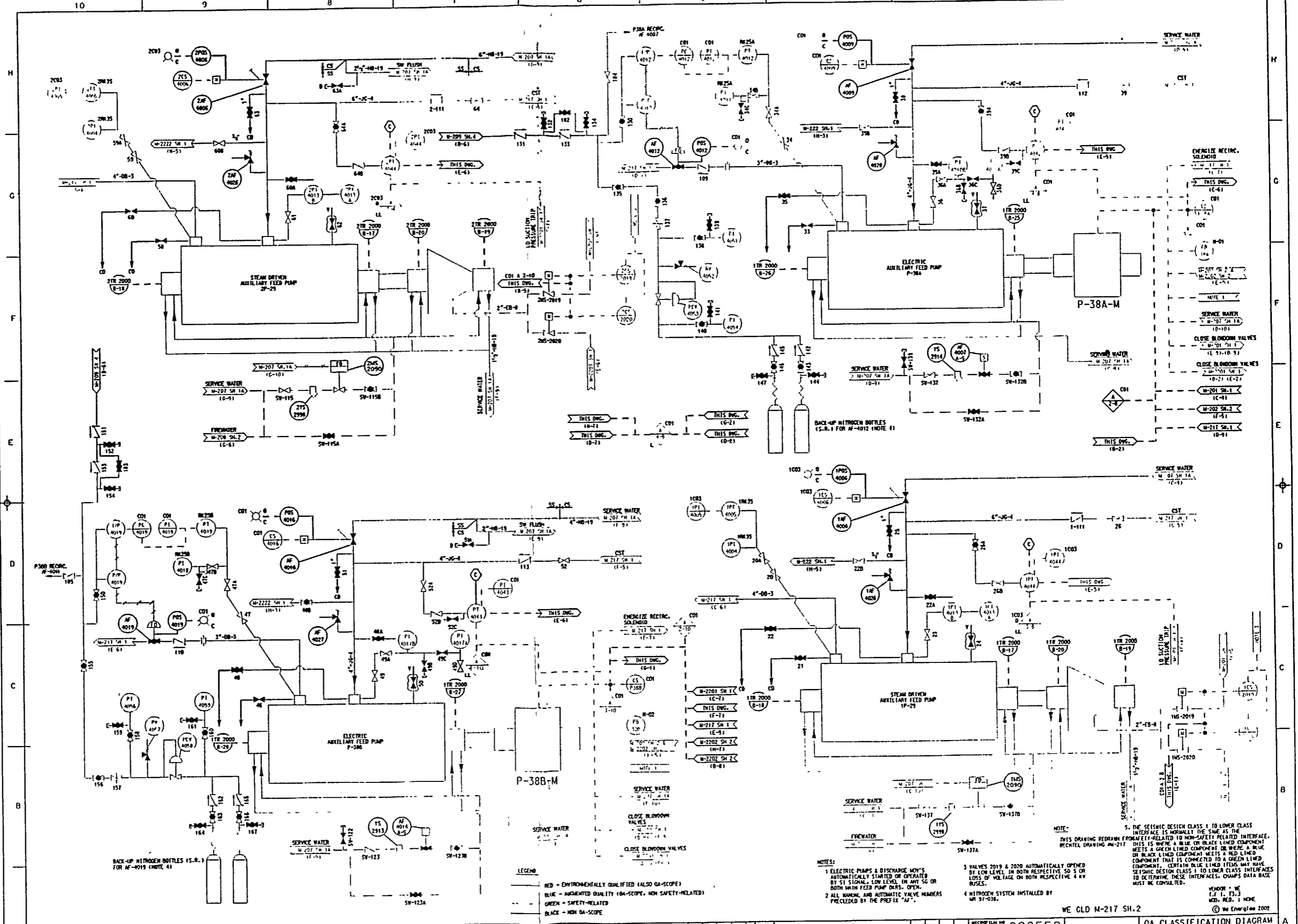
298551

DA CLASSIFICATION DIAGRAM
AUXILIARY FEEDWATER SYSTEM

POINT BEACH N.P. UNIT 1&2

EPB 31 MAFK100000421

07-OCT-2002
DRAWING ONLY VALID IN COLOR



NO.	DATE	REVISION	BY	CHKD.	APP'D.	DESCRIPTION
1	11-14-00	REVISED FOR BOM #000-1100	J.M.	J.M.	J.M.	REVISED FOR BOM #000-1100
2	11-14-00	REVISED FOR BOM #000-1100	J.M.	J.M.	J.M.	REVISED FOR BOM #000-1100
3	11-14-00	REVISED FOR BOM #000-1100	J.M.	J.M.	J.M.	REVISED FOR BOM #000-1100
4	11-14-00	REVISED FOR BOM #000-1100	J.M.	J.M.	J.M.	REVISED FOR BOM #000-1100
5	11-14-00	REVISED FOR BOM #000-1100	J.M.	J.M.	J.M.	REVISED FOR BOM #000-1100
6	11-14-00	REVISED FOR BOM #000-1100	J.M.	J.M.	J.M.	REVISED FOR BOM #000-1100
7	11-14-00	REVISED FOR BOM #000-1100	J.M.	J.M.	J.M.	REVISED FOR BOM #000-1100
8	11-14-00	REVISED FOR BOM #000-1100	J.M.	J.M.	J.M.	REVISED FOR BOM #000-1100
9	11-14-00	REVISED FOR BOM #000-1100	J.M.	J.M.	J.M.	REVISED FOR BOM #000-1100
10	11-14-00	REVISED FOR BOM #000-1100	J.M.	J.M.	J.M.	REVISED FOR BOM #000-1100

LEGEND

- RED - ENVIRONMENTALLY QUALIFIED (ALSO QA-SCOPE)
- BLUE - AUGMENTED QUALITY (QA-SCOPE, NON SAFETY-RELATED)
- GREEN - SAFETY-RELATED
- BLACK - NON QA-SCOPE

NOTES:

- ELECTRIC PUMPS & DISCHARGE MOV'S AUTOMATICALLY STARTED OR OPERATED BY ST SIGNAL, LOW LEVEL IN ANY SG OR BOTH MAIN FEED PUMP DISCS OPEN.
- ALL MANUAL AND AUTOMATIC VALVE NUMBERS PRECEDED BY THE PREFIX "AF".
- VALVES 2019 & 2020 AUTOMATICALLY OPENED BY LOW LEVEL IN BOTH RESPECTIVE SG'S OR LOSS OF VOLTAGE ON BOTH RESPECTIVE 4KV BUSES.
- NITROGEN SYSTEM INSTALLED BY 97-018.

NOTE:

5. THE SEISMIC DESIGN CLASS 1 TO LOWER CLASS INTERFACE IS NORMALLY THE SAME AS THE INTERFACE RELATED TO NON-SAFETY RELATED INTERFACE. THIS IS WHERE A BLUE OR BLACK LINED COMPONENT MEETS A GREEN LINED COMPONENT OR WHERE A BLUE OR BLACK LINED COMPONENT MEETS A RED LINED COMPONENT THAT IS CONNECTED TO A GREEN LINED COMPONENT. CERTAIN BLUE LINED ITEMS MAY HAVE SEISMIC DESIGN CLASS 1 TO LOWER CLASS INTERFACES TO DETERMINE THESE INTERFACES, CHAMP'S DATA BASE MUST BE CONSULTED.

VENOR - J.E.
T.F.L. P.J.
M.D. RED. J. MOHE
© We Energies 2002

WE GLD M-217 SH.2

298552

OA CLASSIFICATION DIAGRAM
AUXILIARY FEEDWATER SYSTEM

POINT BEACH N.P. UNIT 1&2

EPB 31 MAFK00000521

14-SEP-2002
DRAWING ONLY VALID IN COLOR