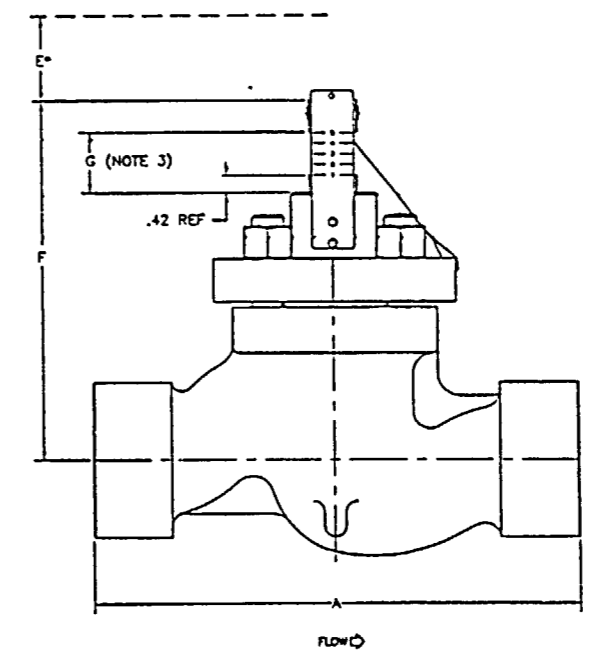
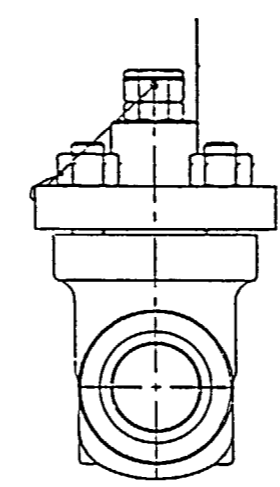
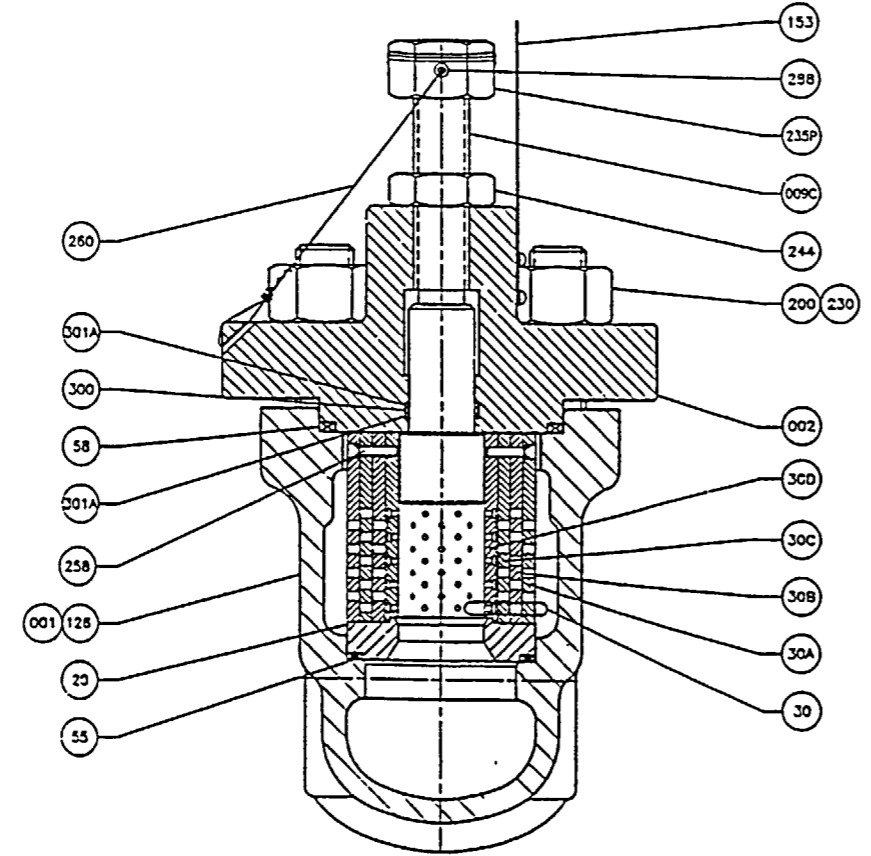


PART NO	QTY	DESCRIPTION	MATERIAL
001	1	BODY	A351-CF8M
002	1	BONNET	A479-316
009C	1	PLUG/STEM	A479-316
153	1	INDICATOR PLATE (POSITION)	AISI-304
200	4	STUD, 0.75-10	A193-B7
230	4	NUT, 0.75-10, HYTHX	A194-2H
235P	1	NUT-PIN	A194-2H
244	1	NUT-JAM (ST-4)	A194-2H
260	1	SAFETY WIRE (18 GA)	SOFT STAINLESS STEEL TYPE 302/304
288	1	LOCK PIN	A151-420
300	1	O-RING (BONNET)	NITRILE (70)
301A	2	BACK-UP RING	NITRILE (90)

SEQ	QTY	DESCRIPTION	MATERIAL	INOTE
20	1	SEAT RING, MK1, CHNLSTRM	A479-316	
30	1	SEAT RET, MK1, CHNLSTRM	A582-416HT	5
30A	1	SEAT RETAINER, FIRST STAGE	---	5
30B	1	SEAT RETAINER, SECOND STAGE	---	5
30C	1	SEAT RETAINER, THIRD STAGE	---	5
30D	1	SEAT RETAINER, FOURTH STAGE	---	5
55	1	GASKET, SEAT RING	316/GRAPHITE	
58	1	GASKET, BONNET RING	316/GRAPHITE	
126	1	PLATE, FLOW ARROW	302 STAINLESS STEEL	
258	2	ALIGNMENT PIN	A479-316	5

REV	REVISIONS	BY	CHK
1	TOP VIEW WIRE NOTE WAS WRAP WIRE 1 TO 3 REVOLUTIONS. ADDED PART NO'S 153, 235P, AND 288. DELETED PART NO. 243 RETAINING RING. NOTE 3. ADDED POSITION INDICATION NO'S 1, 2, 3, 4 AND 5. NOTE 4. ADDED SERIAL NO. D440T-1-1		

TDAFPs
1/2 P-29



* - DISASSEMBLY/MAINTENANCE CLEARANCE				
	A	E	F	APPROXIMATE WEIGHT
INCH	11.3	2.5	8.5	40 LBS
mm	287	63.5	216	19 KG

- NOTES
- VALVE IS DESIGNED IN ACCORDANCE WITH ASME B16.34 - 1996 WITH 1998 ADDENDA, STANDARD CLASS
 - APPROX VALVE WEIGHT = 40 LBS
 - ADJUSTABLE POSITION :

	1	2	3	4	5
G (INCHES) :	.42 (MIN)	.67	.92	1.17	1.42 (MAX)
APPROXIMATE C _v (LINEAR) :	1.4	2.1	2.7	3.4	4.1
 - VALVE TAG NO: 2R0-04003, SERIAL NO: D440T-1-1
 - SEAT RETAINER, SEQ 30, FURNISHED AS COMPLETE ASSEMBLY ONLY.

330013	DIPB 31	WESCAM	2-1-01
REV	DATE	DESCRIPTION	
1	10-12-01	REVISED TO 2002 SPECIFICATION	
2	10-16-01	REVISED TO 2002 SPECIFICATION	

WESCAM ELECTRIC POWER CO.
POINT BEACH NUCLEAR PLANT UNIT
CUSTOMER P.O. NO. 4500429418
FLOWSERVE CORP. S.O. D440T-1

FLOWSERVE	Pressure Class Flow Control Division	Wilmington, PA
2"-600 LB GLOBE CONTROL VALVE SOCKET ENDS, STAINLESS STEEL VALTEK MARK ONE CHANNELSTREAM WITH ADJUSTABLE PRESSURE REDUCING DEVICE		
OWN BY: RAW	DATE: 10-08-01	DRAWING TYPE: DCA
CHK BY: KES	DATE: 10-12-01	9:4:--:1:6:2:4:9:1 A
APP BY: MDC	DATE: 10-16-01	1:2:3:4:5:6:7:8:9

CHECK ALL DIMENSIONS OF MATERIALS
 USE OF MATERIALS, DIMENSIONS AND WEIGHTS
 ARE SUBJECT TO CHANGE WITHOUT NOTICE
 AND WITHOUT LIABILITY TO THE MANUFACTURER
 OF THIS PRODUCT. THE MANUFACTURER
 ASSUMES NO LIABILITY FOR THE USE OF THIS
 PRODUCT IN ANY APPLICATION OTHER THAN
 THAT FOR WHICH IT WAS DESIGNED.
 DATE: 3/1/02

