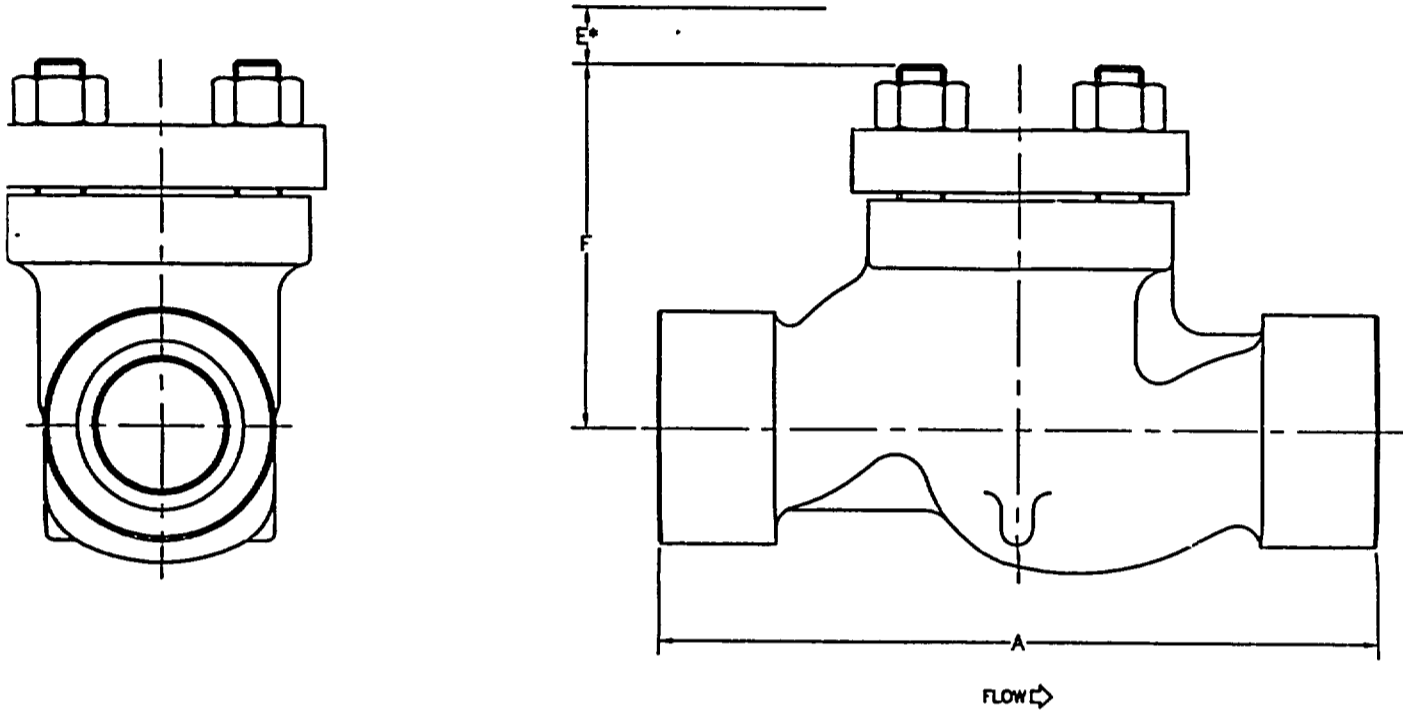


SEQ	QTY	DESCRIPTION	MATERIAL	REV	REVISIONS	BY	APP'D BY
1	1	BODY, MK1, 2", CL 600	A351-CF8M				
20	1	SEAT RING, MK1, CHNLSTRM	A479-316				
30	1	SEAT RET, MK1, CHNLSTRM	A479-316				
55	1	GASKET, BONNET CAP	316/GRAPHITE				
58	1	GASKET, SEAT RING	316/GRAPHITE				
70	1	CAP, BONNET, 1.50/2"	A479-316				
108	4	STUD, 0.75-10, 2.75	A193-B7				
114	4	NUT, 0.75-10, HVYHX	A194-2H				
126	1	PLATE, FLOW ARROW	302 STAINLESS STEEL				



• - DISASSEMBLY/MAINTENANCE CLEARANCE

	A	E	F	APPROXIMATE WEIGHT
INCH	11.3	1.0	5.7	30 LBS
mm	287	24.5	145	14 KG

- NOTES**
1. VALVE IS DESIGNED IN ACCORDANCE WITH ANSI B16.34 - 1996 WITH 1998 ADDENDA, STANDARD CLASS
  2. APPROX  $C_v = 2.3$
  3. VALVE TAG NO'S: RO-4008 RO-4015

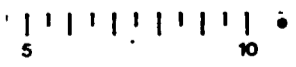
WISCONSIN ELECTRIC POWER CO.  
 POINT BEACH NUCLEAR PLANT UNIT  
 CUSTOMER P.O. NO.: 4500291375  
 FLOWSERVE CORP. S.O. D981A-1

**VENDOR:** FLOWSERVE  
**TFE:** T 3.3  
**MOO:** 99-000

<b>FLOWSERVE</b> Flowserve Corp. Flow Control Division		Williamsport, PA	
<b>2"-600 LB VALTEK MARK I CHANNEL STREAM PRESSURE REDUCING DEVICE</b>			
DWN BY: RAW	DATE: 03-28-00	DRAWING TYPE: DCA	REV
CHK BY: RWD	DATE: 03-28-00	9 4 - 1 1 6 2 1 9	-
APD BY: RDC	DATE: 4/3/00	1 2 3 4 5 6 7 8 9	

REV	DATE	DESCRIPTION	BY	CHK
01	01/12/00	Iss. for MR-99-009-A	HT	HT
02	03/28/00	Iss. for MR-99-009-A	HT	HT

049 P.B. 31. MAFG26900.201

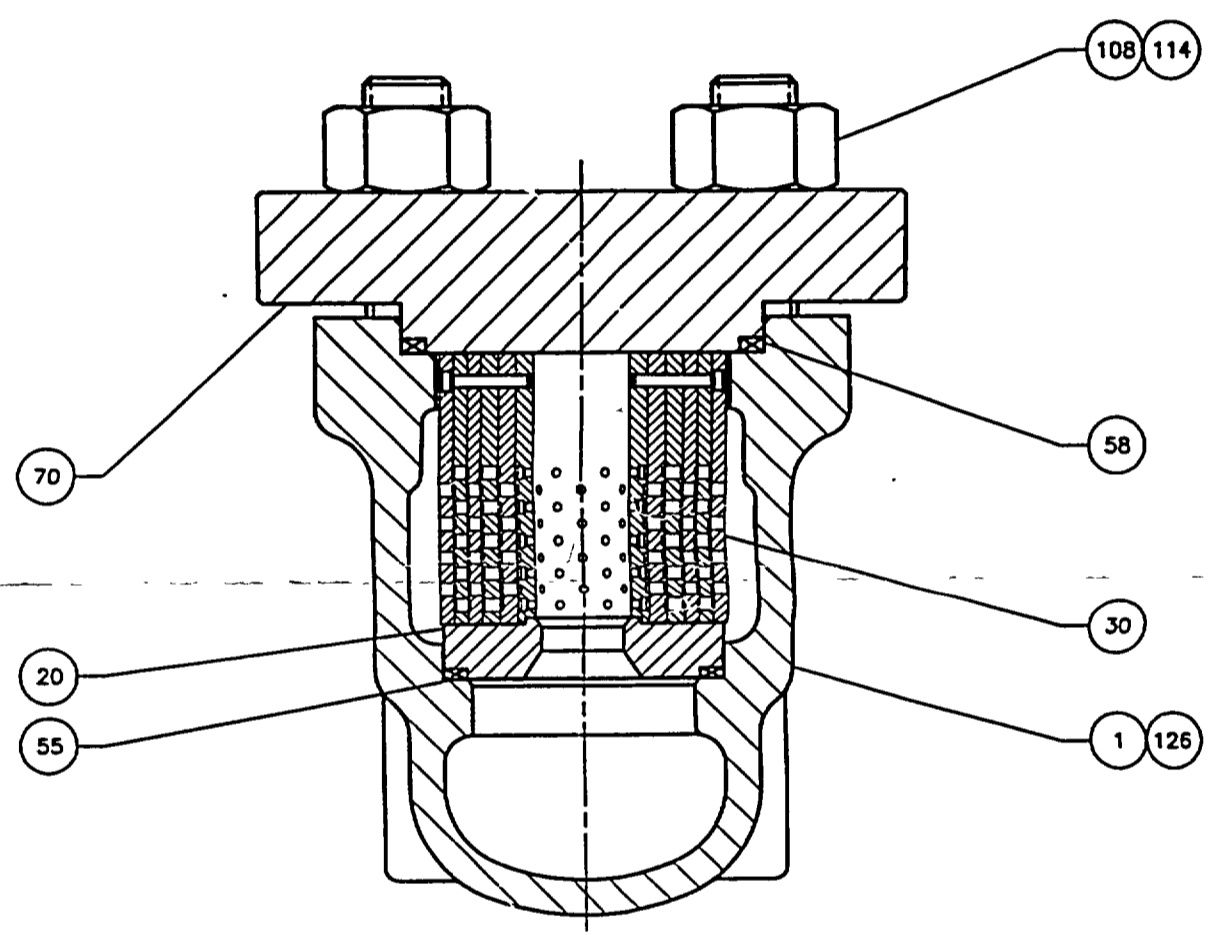


A B C D

4 3 2 1

*Handwritten:* A/102

MEAS



**CERTIFICATE OF REPRODUCTION OF RECORDS**  
 Type of Record: Photostatic Copy  
 This is to certify that the image which appears on this film negative is a direct and accurate reproduction of an original record of Western Electric Power Co., and that it has been made in the ordinary course of business in accordance with prescribed instructions and the undersigned person who has executed this certificate has personal knowledge of the facts covered by this certificate.  
 Executed by: J.D. JOHNSON Western Electric Power Co.  
 Title: Team Leader, Corp. Secretary  
 Date: 5/3/61

D  
C  
B  
A  
1  
2  
3  
4  
5  
6  
7  
8  
9  
10  
11  
12  
13  
14  
15  
16  
17  
18  
19  
20