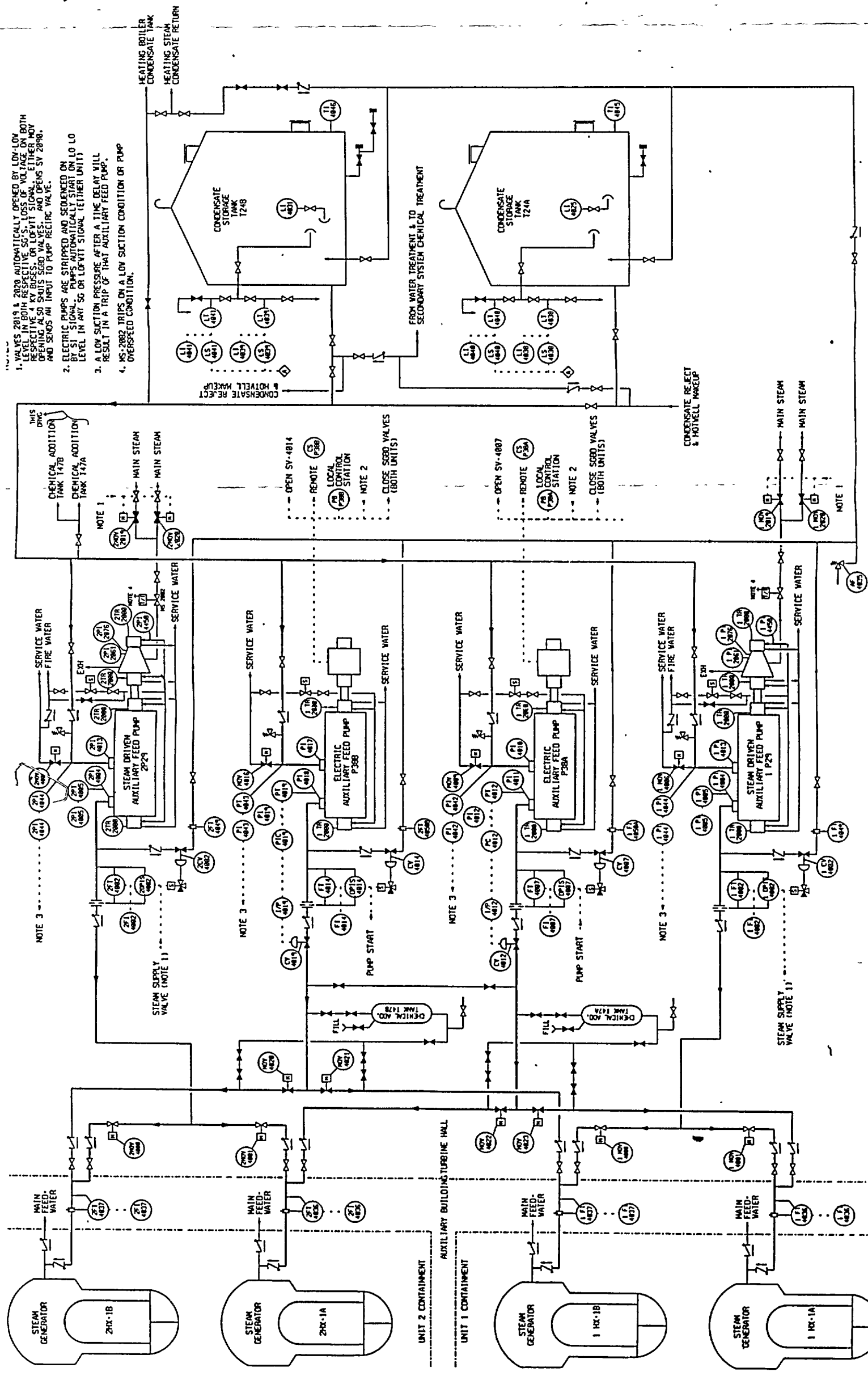


A1101

5.5.0-1
Date 12/14/00
[Signature]



1. VALVES 2819 & 2820 AUTOMATICALLY OPENED BY LOW-LOW LEVEL IN BOTH RESPECTIVE SG'S. LOSS OF VOLTAGE ON BOTH RESPECTIVE 4 KV BUSES, OR LOW-VIT SIGNAL, EITHER MAY OPENING ALSO SHUTS SSGD VALVES, AND OPENS SV 2898, AND SENDS AN INPUT TO PUMP RECIRC VALVE.
2. ELECTRIC PUMPS ARE STRIPPED AND SEQUENCED ON SV 2898 SIGNAL. PUMPS AUTOMATICALLY START ON LO LO LEVEL IN ANY SG OR LOW-VIT SIGNAL (EITHER UNIT)
3. A LOW SUCTION PRESSURE, AFTER A TIME DELAY WILL RESULT IN A TRIP OF THAT AUXILIARY FEED PUMP.
4. MS-2882 TRIPS ON A LOW SUCTION CONDITION OR PUMP OVERSPEED CONDITION.

NOTE 1
 CHEMICAL ADDITION TANK 177B
 CHEMICAL ADDITION TANK 177A
 MAIN STEAM
 MAIN STEAM

NOTE 2
 OPEN SV-4814
 REMOTE LOCAL CONTROL STATION
 NOTE 2
 CLOSE SSGD VALVES (BOTH UNITS)

NOTE 3
 OPEN SV-4887
 REMOTE LOCAL CONTROL STATION
 NOTE 2
 CLOSE SSGD VALVES (BOTH UNITS)

NOTE 3
 STEAM SUPPLY VALVE (NOTE 1)

NOTE 3
 STEAM SUPPLY VALVE (NOTE 1)

NOTE 3
 STEAM SUPPLY VALVE (NOTE 1)