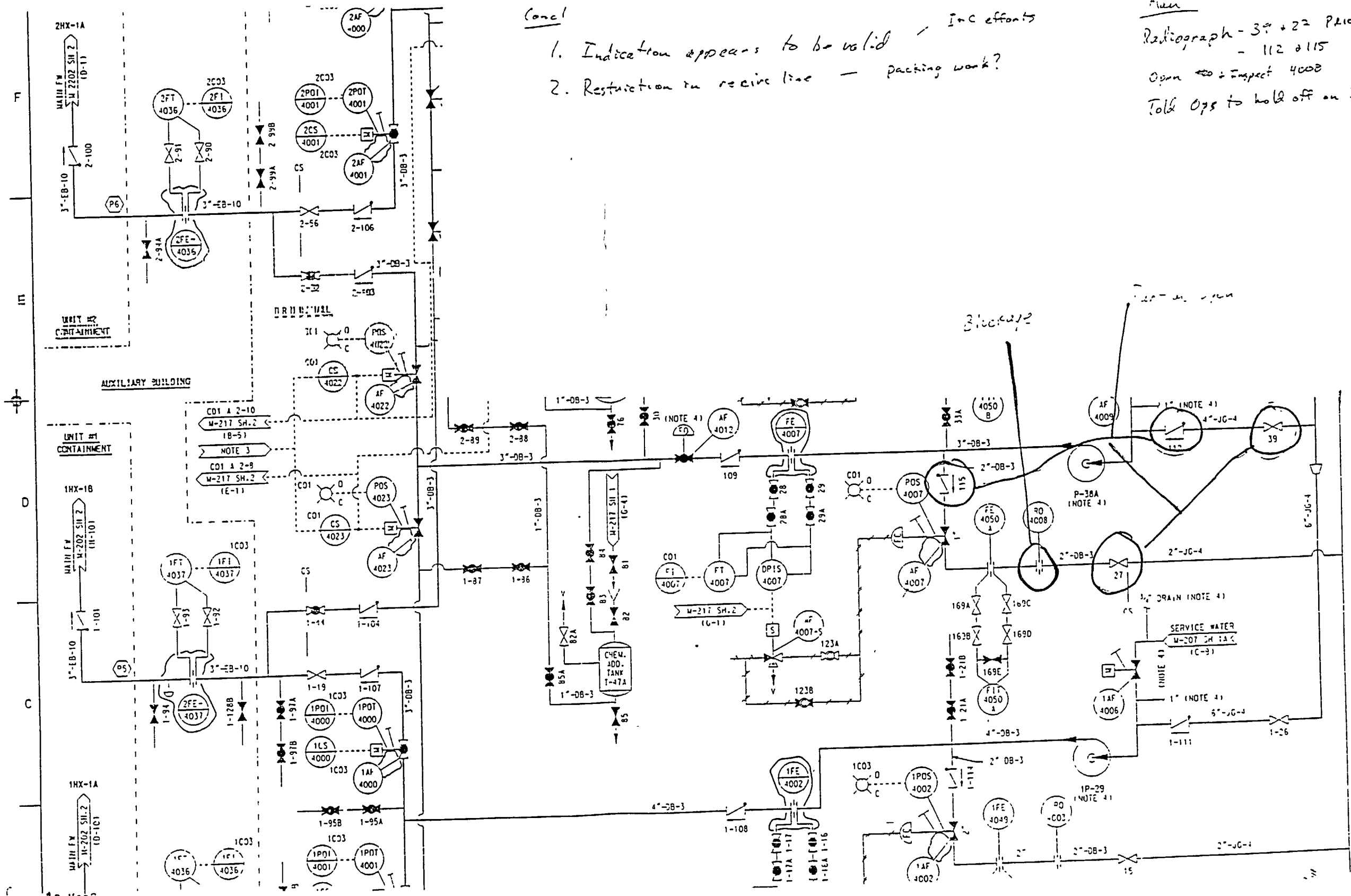


R6-4008  
0213343

Possible  
Leakby of PCV & MOV  
Pump degradation  
Indication  
Restriction - 7 sources



- Concl
1. Indication appears to be valid - Inc efforts
  2. Restriction in receive line - packing work?

Plan  
Radiograph - 3" + 22 PRIOR to striking  
- 112 & 115  
Open to inspect 4008  
Told Ops to hold off on IT-10C

J? - WO + Work plan for AO-4008  
Turner - talking to PWA  
Guenther - radiographed in March/April

11:52 AM UNIT 3.62 OPEN  
Full stacks  
Checked gas

Mid C&G system  
Vented  
Leak in C&G system - no restriction  
Mid C&G open now run

Plan  
\* 1 - 2nd point  
\* 2 - 3rd point  
\* 3 - 4th point