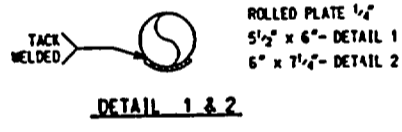


INSULATION=NONE-FOR JG-4



NOTE:  
 FOR "OPERATING" AND "DESIGN" TEMPERATURES & PRESSURES.  
 SEE THE "THERMAL MODES REPORT"  
 FOR THE FOLLOWING DATA SEE ACCESSION REPORT: 300045  
 a) STRESS ANALYSIS DATA  
 b) THERMAL ANALYSIS  
 c) SEISMIC ANALYSIS  
 d) PIPE STRESS ANALYSIS  
 e) VALVE INFORMATION

- LEGEND
- RIGID VERTICAL RESTRAINT
  - SPRING HANGER (C=CONSTANT V=VARIABLE)
  - ▲ ANCHOR
  - ≡ GUIDE
  - ⊥ HORIZONTAL RESTRAINT
  - ⊎ SNUBBER

ExpertCADIC  
 DESIGNED BY: BECHTEL  
 PROJ. NO.: P-117  
 DATE: 5/02/96  
 DESIGNED BY: DJF  
 CHECKED BY: DJF  
 DATE: 6/6/92  
 REV. 01

AS-BUILT PER THE IEB 79-14  
 RECONCILIATION PROGRAM

VENDOR: BECH  
 T.P. 1. 73.3  
 MOD. NO. 1 M-759

BECH 10447 P-117

© WISCONSIN ELECTRIC 1996

REV	DATE	DESCRIPTION	BY	CHK	APP	LEVEL USAGE	CGS REF FILES	MICROFILM NO.	CGS NO.	PROJECT NO.	ACTIVITY NO.	SCALE
10	08-15-97	REVISED PER DCH #97-1584	7899	RAG	DES	DES		152434	59283			
09	07-28-97	REVISED PER DCH #97-1387	7826	CRP	SEV	DES						
08	03-12-97	REVISED PER DCH #96-1325	6708	CRP	SEV	DES						
07	3-1-96	CONVERTED AND REVISED PER DCH #94-2073	5459	SAB	DES	DES						
06	3-4-91	RECORDED AND REVISED PER DCH #90-1560	4479	RL	PPL	DJM						

AUX FEEDWATER PUMP SUCTION FROM  
 CONDENSATE STORAGE TANKS  
 JG-4  
 P-117  
 POINT BEACH N.P. UNITS 1 & 2

MAFL18300110

