

January 14, 2003

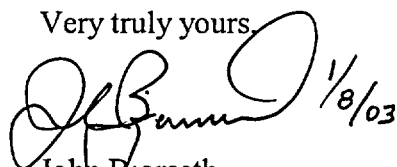
NG-03-0012

U.S. Nuclear Regulatory Commission
Attn: Document Control Desk
Mail Station 0-P1-17
Washington, DC 20555-0001

Subject: Duane Arnold Energy Center
Docket No: 50-331
Operating License: DPR-49
December 2002 Monthly Operating Report
File: A-118d

Please find enclosed the Duane Arnold Energy Center Monthly Operating Report. The report has been prepared in accordance with the guidelines of NRC Generic Letter 97-02: Revised Contents Of The Monthly Operating Report, and distribution has been made in accordance with DAEC Technical Specifications, Section 5.6.4.

Very truly yours,


John Bjorseth
Plant Manager-Nuclear

JKB/RBW

Enclosures

3277 DAEC Road • Palo, Iowa 52324-9785
Telephone 319 851.7611
IE24

January 14, 2003

NG-03-0012

Page 2 of 2

cc:

Mr. James E. Dyer
Regional Administrator, Region III
U.S. Nuclear Regulatory Commission
801 Warrenville Road
Lisle, IL 60532-4351

Ms. Parveen Baig
Iowa State Utilities Board
Lucas State Office Building
Des Moines, IA 50319

Ms. Barbara Lewis
McGraw-Hill, Inc.
1200 G Street NW, Suite 1100
Washington, DC 20005

Dr. William A. Jacobs, Jr.
GDS Associates, Inc.
1850 Parkway Place, Suite 720
Marietta, GA 30068-8237

Mr. Dennis Murdock
Central Iowa Power Cooperative
Box 2517
Cedar Rapids, IA 52406

Mr. Dale Arends
Corn Belt Power Cooperative
1300 13th Street North
Humboldt, IA 50548

Document Control Desk
INPO Records Center
700 Galleria Parkway
Atlanta, GA 30339-5957

IRMS

NRC Resident Inspector

Mr. Darl Hood
1 White Flint North
Mail Stop 8H4A
11555 Rockville Pike
Rockville, MD 20852

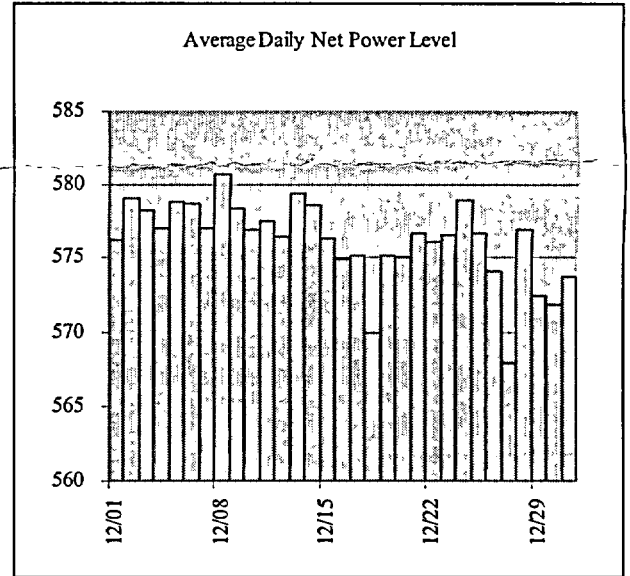
CTS Project

OPERATING DATA REPORT

DOCKET NO: 50-331
 DATE: 01-14-2003
 Unit: Duane Arnold Energy Center
 COMPLETED BY: Richard Woodward
 TELEPHONE: (319) 851-7318

OPERATING STATUS

1. Unit Name: Duane Arnold Energy Center
2. Reporting Period: December 2002
3. Licensed Thermal Power (MW_{th}): 1912
Tech. Spec Amendment 243 and TSCR for extended power uprate was implemented November 7, 2001. Current operating thermal power, as limited by balance-of-plant equipment, is 1790
4. Nameplate Rating (Gross MW_e DER): 676.425
Current rated output, adjusted for as-built balance-of-plant conditions is 614.0
5. Design Electrical Rating (Net MW_e DER): 581.4
6. Maximum Dependable Capacity (Gross MW_e MDC): 593.1
7. Maximum Dependable Capacity (Net MW_e MDC): 565.5
8. If Changes Occur in Capacity Ratings (Items Number 3 through 7) since the last report, give reasons: N/A
9. Power Level to Which Restricted, If Any (Net MW_e): N/A
10. Reasons for Restrictions, If Any: N/A



		Dec-02	2002	Cumulative
11.	Hours in Reporting Period	744.0	8,760.0	244,704.0
12.	Number of Hours Reactor Was Critical	744.0	8,265.2	194,245.8
13.	Reactor Reserve Shutdown Hours	0.0	0.0	192.8
14.	Hours Generator On-Line	744.0	8,148.4	190,073.3
15.	Unit Reserve Shutdown Hours	0.0	0.0	0.0
16.	Gross Thermal Energy Generated (MWH)	1,329,988.3	14,238,796.3	278,737,426.1
17.	Gross Electrical Energy Generated (MWH)	453,213.0	4,840,595.0	93,574,812.6
18.	Net Electrical Energy Generated (MWH)	428,683.5	4,581,076.3	87,956,702.3
19.	Unit Service Factor	100.0%	93.0%	77.7%
20.	Unit Availability Factor	100.0%	93.0%	77.7%
21.	Unit Capacity Factor (Using MDC Net)	101.9%	92.7%	70.7%
22.	Unit Capacity Factor (Using DER Net)	99.1%	90.2%	68.6%
23.	Unit Forced Outage Rate	0.0%	1.8%	8.3%

AVERAGE DAILY UNIT POWER LEVEL

DOCKET NO: 50-331
DATE: 01-14-2003
Unit: Duane Arnold Energy Center
COMPLETED BY: Richard Woodward
TELEPHONE: (319) 851-7318

MONTH December 2002

Day	Average Daily Power Level (MWe-Net)
1	576
2	579
3	578
4	577
5	579
6	579
7	577
8	581
9	578
10	577
11	578
12	577
13	579
14	579
15	576
16	575
17	575
18	570
19	575
20	575
21	577
22	576
23	577
24	579
25	577
26	574
27	568
28	577
29	573
30	572
31	574

REFUELING INFORMATION

DOCKET NO: 50-331
 DATE: 01-14-2003
 Unit: Duane Arnold Energy Center
 COMPLETED BY: Richard Woodward
 TELEPHONE: (319) 851-7318

1. Name of facility. Duane Arnold Energy Center
2. Scheduled date for next refueling shutdown. Spring 2003
3. Scheduled date for restart following refueling. Spring 2003
4. Will refueling or resumption of operation thereafter require a technical specification change or other license amendment? No
5. Scheduled date(s) for submitting proposed licensing action and supporting information. N/A
6. Important licensing considerations associated with refueling, e.g., new or different fuel design or supplier, unreviewed design or performance analysis methods, significant changes in fuel design, new operating procedures. N/A
7. Current fuel assemblies inventory

	Number of Fuel Assemblies	Projected date of last refueling that can be discharged (after allowing margin for maintenance of continuous full-core discharge capability)
In receiving for Reload 18	152	
Installed into reactor core	368	
Discharged from core to Spent Fuel Storage Pool	1912	
Scheduled for transfer to Dry Fuel Storage November 2003	610	
Installed capacity of Spent Fuel Storage Pool	2411	2008
Licensed capacity of Spent Fuel Storage Pool (with re-racking)	2829	2014
Licensed capacity of Spent Fuel Storage Pool and Cask Pool (with reracking)	3152	

DOCKET NO: 50-331
 DATE: 01-14-2003
 Unit: Duane Arnold Energy Center
 COMPLETED BY: Richard Woodward
 TELEPHONE: (319) 851-7318

UNIT SHUTDOWNS AND POWER REDUCTIONS
 REPORT MONTH: December 2002

(There were no shutdowns or power changes greater than 20%)

No.	Date	Type (1)	Duration (Hours)	Reason (2)	Method of Shutting Down Reactor (3)	Licensee Event Report #	Cause

1 - F: Forced S: Scheduled	2 - Reason A-Equipment Failure (Explain) B-Maintenance or Test C-Refueling D-Regulatory Restriction E-Operator Training & License Examination F-Administrative G-Operational Error (Explain) H-Other (Explain)	3 - Method: 1-Manual 2-Manual Scram 3-Automatic Scram 4-Continued 5-Reduced Load 9-Other (Explain)
---	---	---

DOCKET NO.: 50-331
 DATE: 01-14-2003
 Unit: Duane Arnold Energy Center
 COMPLETED BY: Richard Woodward
 TELEPHONE: (319) 851-7318

Monthly Operational Overview for December 2002

At the beginning of December, the DAEC had continuously operated for 82 days since the startup following its most recent shutdown.

The only departures from full thermal power (1790 MWth) production during the month were:

- a four hour reduction to 1782 MWth on December 4th for a HPCI Surveillance and
- three reactor loadline adjustments on December 4th, 21st, and 26th. Following the adjustment on the 26th, the reactor was limited to approximately 98% average power for approximately 12 hours during a Xenon transient.

A loss of approximately 10 MWe continues from the stuck-open "1E-5B" Feedwater Heater Drain Valve. This loss began October 5th and will continue until the next plant shutdown (presently scheduled for March 24, 2003). Very minor losses are being incurred due to out of service cooling tower cells, but for the most part these losses are being more than off-set by the effects of seasonal cooling of the circulating water.

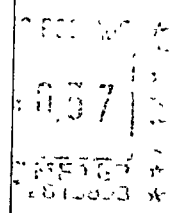
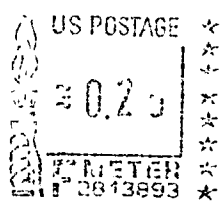
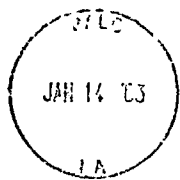
Following is the allocation of production and losses:	Electrical Output MWe	Capacity Factor % of 614 MWe (Target Output)	Full Power Hours Equivalent (FPHeq)
Net Electric Output	576.18	93.84%	698.18
Plant House Loads (while on-line)	+33.09	+5.39%	40.08
Subtotal: Gross Electric Output	609.27	99.23%	738.26
Capacity Losses (departures from full thermal power):	0.21	0.03%	0.26
Loadline Adj 12/04 00:16 - 01:15; 12/21 23:04 - 23:48; 12/26 22:59 - 01:11			
Xenon response to Load Line Adj 12/27 01:11 - 13:00	0.21	0.03%	0.26
HPCI Run 13/04 13:04 - 16:41	0.04	0.01%	0.05
Maintain Margin to 1790 Administrative MWth Limit	0.32	0.05%	0.39
Efficiency Losses (occur even at full thermal power):	7.94	1.30%	9.61
Principally the stuck-open 1E-5B FW drain valve			
-/+ Seasonal Effects (i e., hot weather decrease)	(3.99)	(0.65%)	(4.83)
Subtotal: On-line Losses (Capacity, Efficiency, and Weather):	4.73	0.77%	5.74
Off-Line Losses	0.00	0.00%	0.00
Total: Target Electric Output, %, # of clock-hours	614.00	100.00%	744.00

Licensing Action Summary:

Plant Availability:	100%	Unplanned Auto Scrams (while critical) this month:	0
Number of reportable events:	0	Unplanned Auto Scrams (while critical) last 12 months:	0



Duane Arr
3277 DAEC Road • F



U S NUCLEAR REGULATORY COMMISSION
ATTN DOCUMENT CONTROL DESK
MAIL STATION 0-P1-17
WASHINGTON DC 20555-0001

20555+0001

