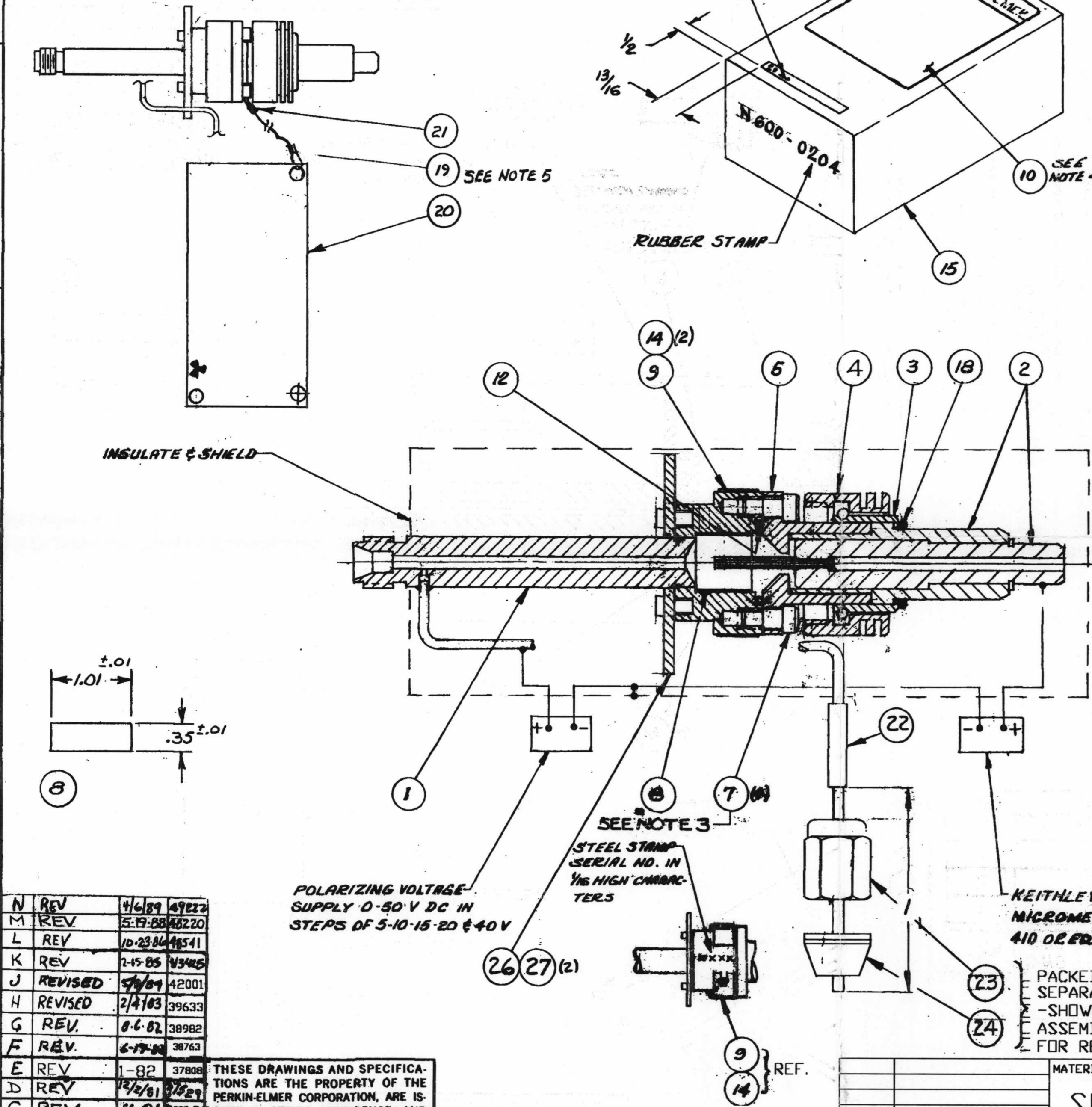


UNLESS OTHERWISE SPECIFIED

DECIMALS		FRACTIONS	ANGLES	SURFACE ROUGHNESS	DIMENSIONS ARE IN INCHES
2 PLACE	3 PLACE	$\frac{1}{32}$		$\sqrt{A.A. MAX.}$	ALL DIAS. ON SAME AXIS CONC. WITHIN .006 T.I.R.
\pm	\pm				BREAK SHARP EDGES .01R. OR .01 X 45° MAX.
					ALL DIMENSIONS AND TOL. APPLY BEFORE FINISH

MATERIALS LIST

ITEM	DWG SIZE	P-E NO.	DESCRIPTION	QTY
1	C	N600-0132	BRAZE ASSY-ECD BODY	1
2	B	N600-0729	ANODE/INSUL ASSY-SIG 2000	1
3	B	N600-0160	BRAZE ASSY-CAP ECD	1
4	B	N600-1051	NUT-CLAMPING	1
5	B	N600-1132	HOUSING-ECD ANODE	1
6				1
7		0990-7568	SCREW-SPECIAL ANTI TAMPER	4
8			FOIL-SEE SPEC N600-02045	1
9	B	0330-1832	LABEL-ECD LOWER RADIO ACTIVITY	1
10	B	N600-1653	LABEL-ECD LEAK TEST	1
11	B	0009-1650	LABEL-RADIO ACTIVITY ECD	1
12		0990-2224	"O" RING ST.ST'L	1
13				
14		0991-1479	DRIVE SCB, TYPE U *00 X 1/8 LG	2
15			BOX-MASON MAILING P45	1
16			BAG-POLY 2"x4"x8"	1
17			FOSTA NET	1/R
18		0990-2128	"O" RING TEFLON	1
19		0998-1813	CABLE-.020 ST. STL. 9" LG	1
20	B	N600-1501	LABEL-ECD RADIOACTIVITY	1
21		0990-8003	CONNECTOR-BUTT	2
22		0994-0073	STRIP-MARKER BROWN	.014
23		0990-3128	NUT-1/8 TUBE	1
24		0497-2808	FERRULE 1/8-1/16 REDUCING	.100
25				
26	B	N600-1711	PLATE-HOLD DOWN	1
27		0990-7441	SPECIAL SCREW #4-40 X 1/16 SOC CAP	2



N600-0204
N
CHG.

- NOTES:**
- FOR CLEANING ASSY & TEST SPEC PROCEDURES SEE N600-02045 SHEETS 1 THRU 3.
 - PRECEDING INCOMING INSPECTION & TEST ASSY TO BE BAKED OUT FOR TWO (2) HRS. AT 200°C TEMP & AT APPROX 4 X 10⁻⁶ MM OF MERCURY AIR PRESSURE
 - SPECIAL TOOL 0990-7299 TO BE SUPPLIED BY PERKIN-ELMER TO SUB CONTRACTOR
 - ITEM 10 (LABEL) TO BE TO APPLIED TO ITEMS IS (BOX) AS SHOWN
 - DEVELOPED LENGTH OF ITEM 19 BETWEEN BUTT CONNECTORS TO BE 5"

D-07

COMPUTER GENERATED DRAWING
PERKIN ELMER
NORWALK, CONNECTICUT

CHG.	DESCRIPTION	DATE	C.N.O.
N	REV	4/6/89	49222
M	REV	5-19-88	40220
L	REV	10-23-84	46541
K	REV	2-15-85	43425
J	REVISED	5/1/84	42001
H	REVISED	2/4/83	39633
G	REV.	8-6-82	38982
F	REV.	6-17-81	38763
E	REV	1-82	37808
D	REV	12/2/81	37529
C	REV	11-81	37354
B	DR#14697	7-81	
A	1ST	5-81	

THESE DRAWINGS AND SPECIFICATIONS ARE THE PROPERTY OF THE PERKIN-ELMER CORPORATION, ARE ISSUED IN STRICT CONFIDENCE, AND SHALL NOT BE REPRODUCED, OR COPIED, OR USED AS THE BASIS FOR THE MANUFACTURE OR SALE OF APPARATUS WITHOUT PRIOR WRITTEN PERMISSION.

MATERIAL	FINISH	QTY	USED ON
SEE M/L			
1	N600-0030		
1	N600-0113		

DO NOT SCALE DRAWING	SCALE 2:1

DRAWN	DATE	CHECKED	DATE	PROJ ENGR	DATE	APPROVED	DATE

ECD ASSY
C N600-0204 N
CHG