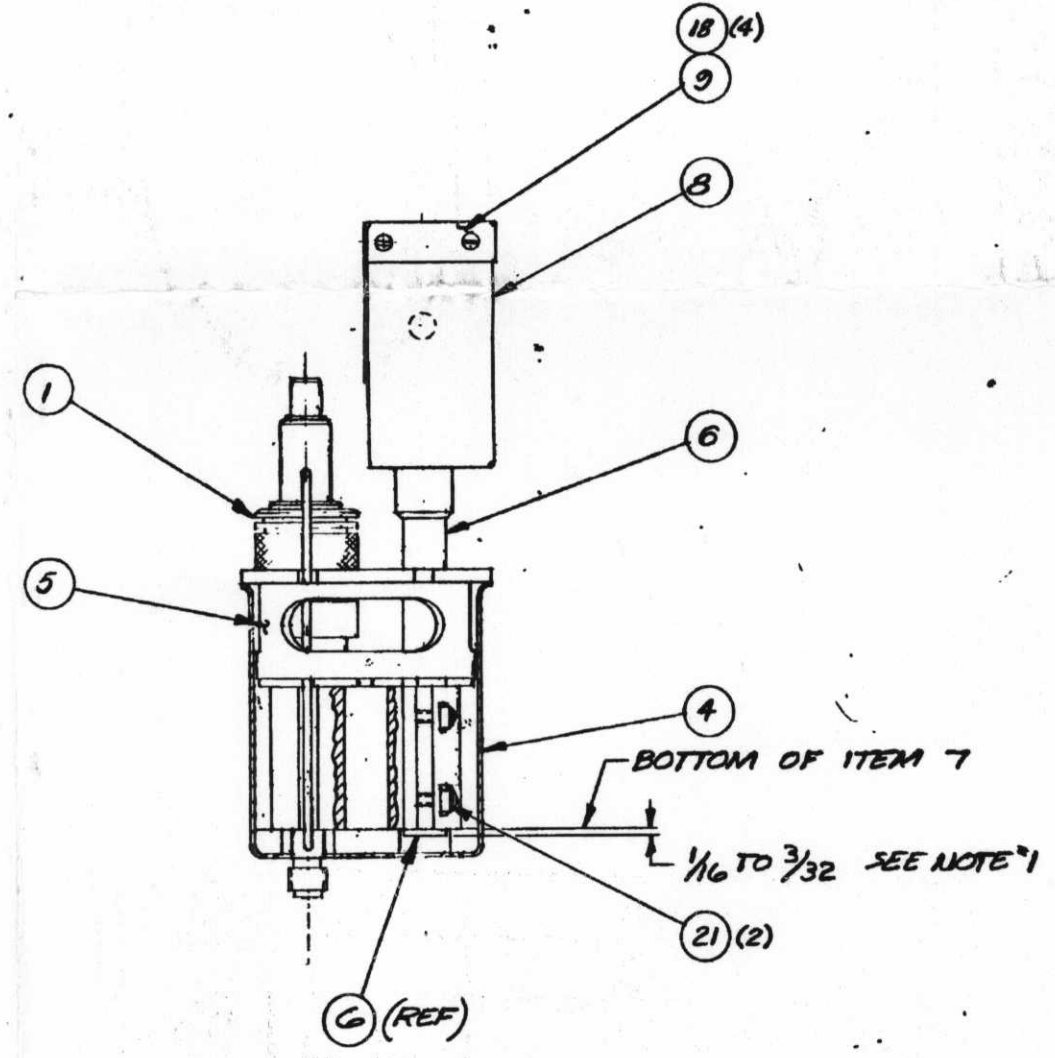
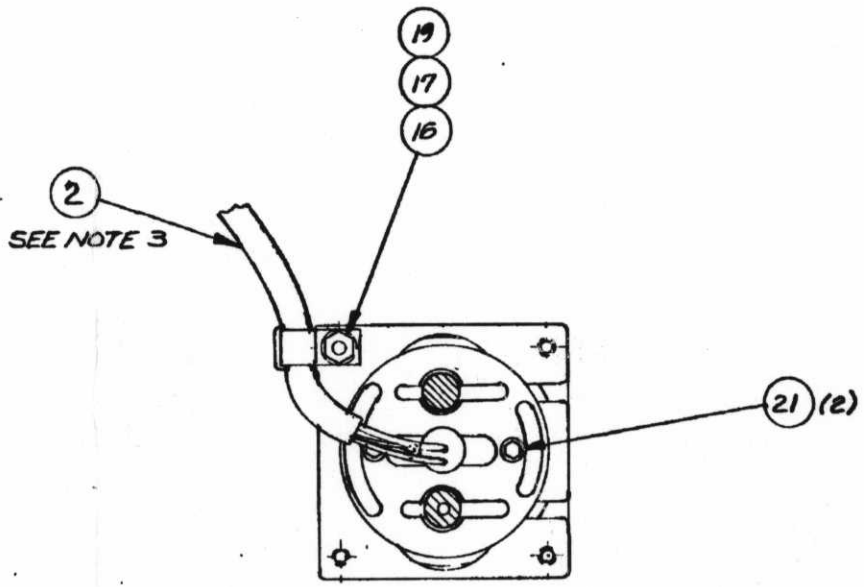
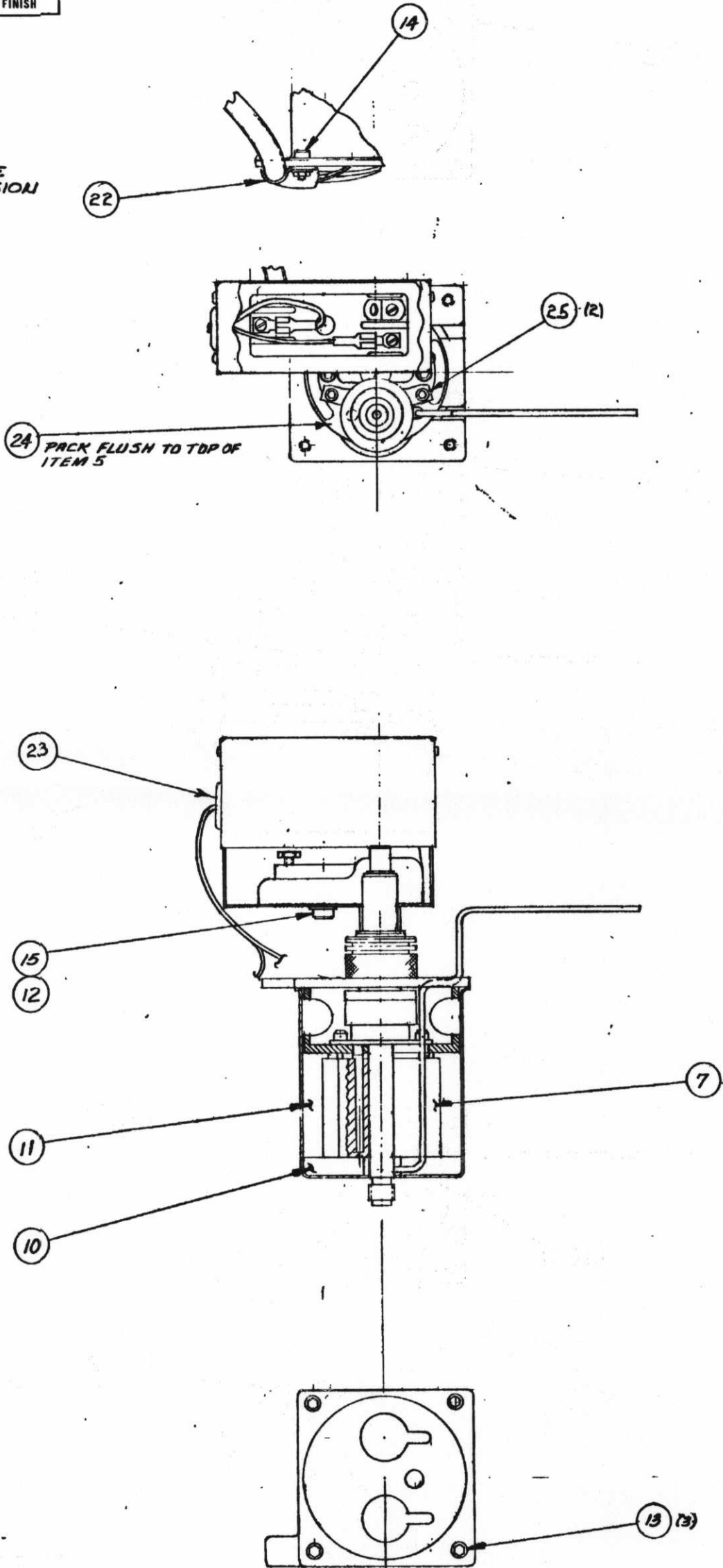


UNLESS OTHERWISE SPECIFIED				
DECIMALS	FRACTIONS	ANGLES	SURFACE ROUGHNESS	DIMENSIONS ARE IN INCHES
2 PLACE	3 PLACE	+	✓ A. A. MAX.	ALL DIAS. ON SAME AXIS CONC WITHIN .006 T.I.R. BREAK SHARP EDGES .01R OR .01 X 45° MAX ALL DIMENSIONS AND TOL. APPLY BEFORE FINISH

- NOTES:
 1. POSITION SHAFT ON ITEM 6 TO PROTRUDE FROM THE BOTTOM OF ITEM 7 TO DIMENSION SHOWN, BEFORE CLAMPING SECURELY.
 2. ASSEMBLE WITH KEY SLOTS IN ITEMS 4, 5 & 7 IN LINE
 3. COAT HEATER & SENSOR BODIES ON ITEM 2 WITH HIGH TEMPERATURE LUBRICATING PASTE 0990-8534 BEFORE INSERTING IN HEATER BLOCK - ITEM 7.



MATERIALS LIST				
ITEM	DWG SIZE	P-E NO.	DESCRIPTION	QTY
1	C	N600-0204	ECD ASSY	1
2	C	N600-0293	HARNESS ASSY-ECD 117V	1
3				
4	D	N600-1022	HOUSING-MODULE	1
5	B	N600-1135	HOUSING-ECD MTG	1
6	B	N600-1141	SWITCH-ECD THERMAL TRIP	1
7	B	N600-1153	BLOCK-ECD HEATER	1
8	C	N600-1156	HOUSING-ECD THERMAL TRIP	1
9	C	N600-1158	COVER-ECD THERMAL TRIP	1
10	B	N600-1203	DISC-INSULATION DET	1
11	B	N600-1443	INSULATION-DET BLOCK	1
12		0991-1244	WASHER FLAT #6 ST STL	1
13		0991-0470	SCR #4-40 X 3/16 LG SOC HD CAP ST STL	3
14		0991-0472	SCR #4-40 X 1/8 LG SOC HD CAP ST STL	1
15		0991-0480	SCR #6-32 X 1/4 LG SOC HD CAP ST STL	1
16		0991-1173	NUT-HEX #4-40 ST STL	1
17		0991-1243	WASHER-FLAT #4	1
18		0991-1571	SCR #2-56 X 1/4 SELF TAP PAN HD	4
19		0991-1729	L'WASHER-SPLIT #4	1
20				
21		0990-7437	SCR #4-40 X 1/8 LG SOC HD CAP ST STL	4
22		0998-4709	STRAIN RELIEF	1
23		0998-4336	CHROMMET	1
24			KRO WOOL	1/2
25		0990-7441	SPEC SCR #4-40 X 3/16 LG SOC HD CAP	1

IDN600-0113

D
CHG.

REV	DATE	DESCRIPTION
D	REV 5/9/01	12001
C	REV 1/22/01	97789
B	DA 1/19/8	1981
A	1ST ISS	8-81

THESE DRAWINGS AND SPECIFICATIONS ARE THE PROPERTY OF THE PERKIN-ELMER CORPORATION, ARE ISSUED IN STRICT CONFIDENCE, AND SHALL NOT BE REPRODUCED, OR COPIED, OR USED AS THE BASIS FOR THE MANUFACTURE OR SALE OF APPARATUS WITHOUT PRIOR WRITTEN PERMISSION.

MATERIAL	TREATMENT	FINISH
1 N601-1400		
1 N601-1040		
QTY.	USED ON	

DO NOT SCALE DRAWING		PERKIN-ELMER	
DRAWN	DATE	METHUEN DIVISION NORWALK, CONNECTICUT	
T. Zeoli	6-10-01	ECD MODULE-117V	
CHECKED	DATE	D IDN600-0113	
PROJ ENGR	DATE	D	
APPROVED	DATE	D	
SCALE	SCALE	D	

D-04