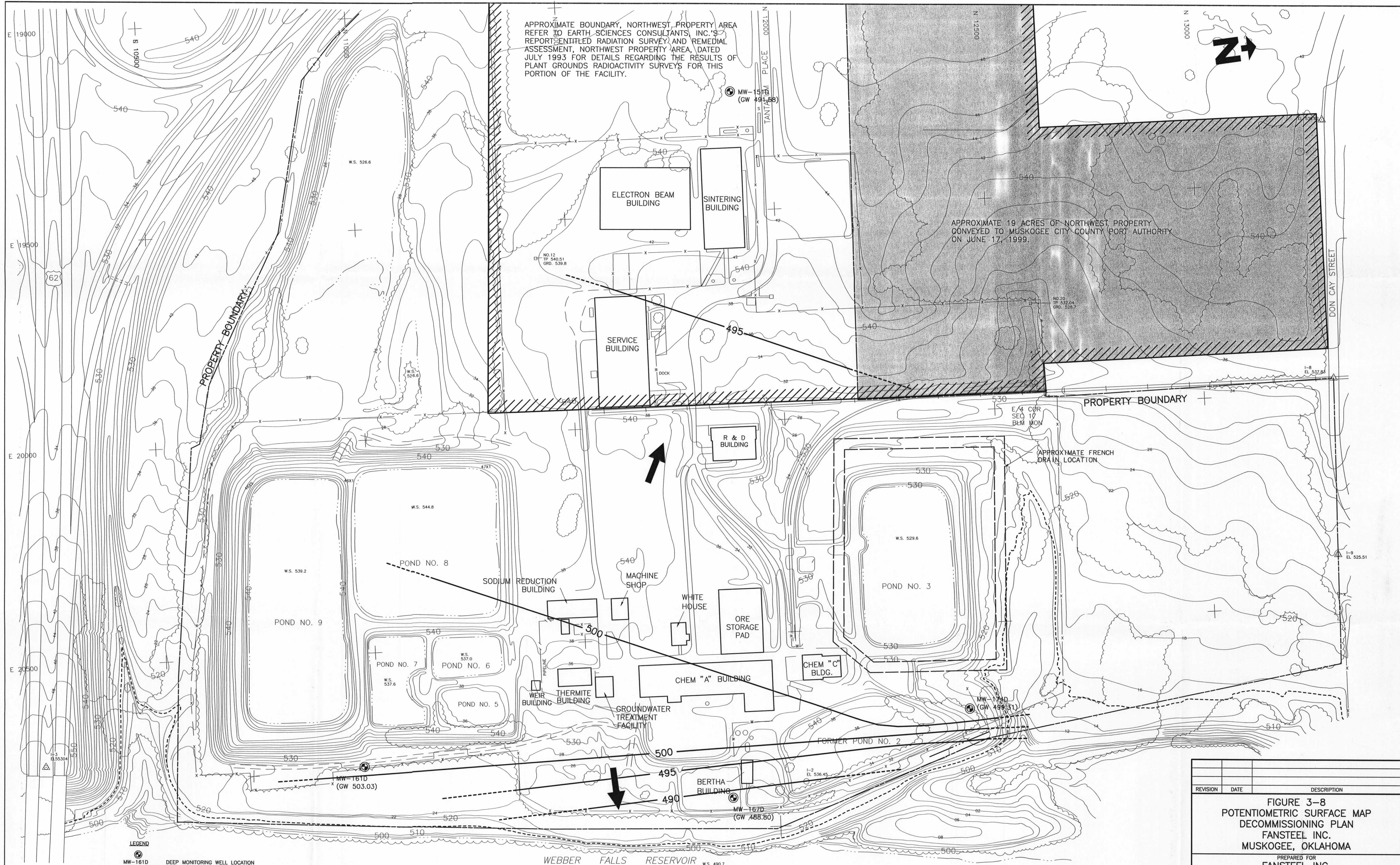


APPROXIMATE BOUNDARY, NORTHWEST PROPERTY AREA REFER TO EARTH SCIENCES CONSULTANTS, INC.'S REPORT ENTITLED RADIATION SURVEY AND REMEDIAL ASSESSMENT, NORTHWEST PROPERTY AREA, DATED JULY 1993 FOR DETAILS REGARDING THE RESULTS OF PLANT GROUNDS RADIOACTIVITY SURVEYS FOR THIS PORTION OF THE FACILITY.

APPROXIMATE 19 ACRES OF NORTHWEST PROPERTY CONVEYED TO MUSKOGEE CITY COUNTY PORT AUTHORITY ON JUNE 17, 1999.



- LEGEND**
- MW-161D (GW 503.03) DEEP MONITORING WELL LOCATION
 - 495 GROUNDWATER CONTOUR LINE (DASHED WHERE INFERRED)
 - APPROXIMATE PROPERTY BOUNDARY
 - GROUNDWATER FLOW DIRECTION



NOTE
 1. GROUNDWATER ELEVATIONS WERE TAKEN ON 4-29-93 EXCEPT FOR MW-151D WHICH WAS TAKEN ON 4-21-93 DUE TO PURGING PRIOR TO 4-29-93.

REVISION	DATE	DESCRIPTION
<p>FIGURE 3-8 POTENTIOMETRIC SURFACE MAP DECOMMISSIONING PLAN FANSTEEL INC. MUSKOGEE, OKLAHOMA</p> <p>PREPARED FOR FANSTEEL INC. MUSKOGEE, OKLAHOMA</p>		
APPROVED	09/11/02	
CHECKED	10/16/02	
DRAWN	10/31/02	
DRAWING NUMBER		
6473430		
		Earth Sciences Consultants, Inc.

D-06