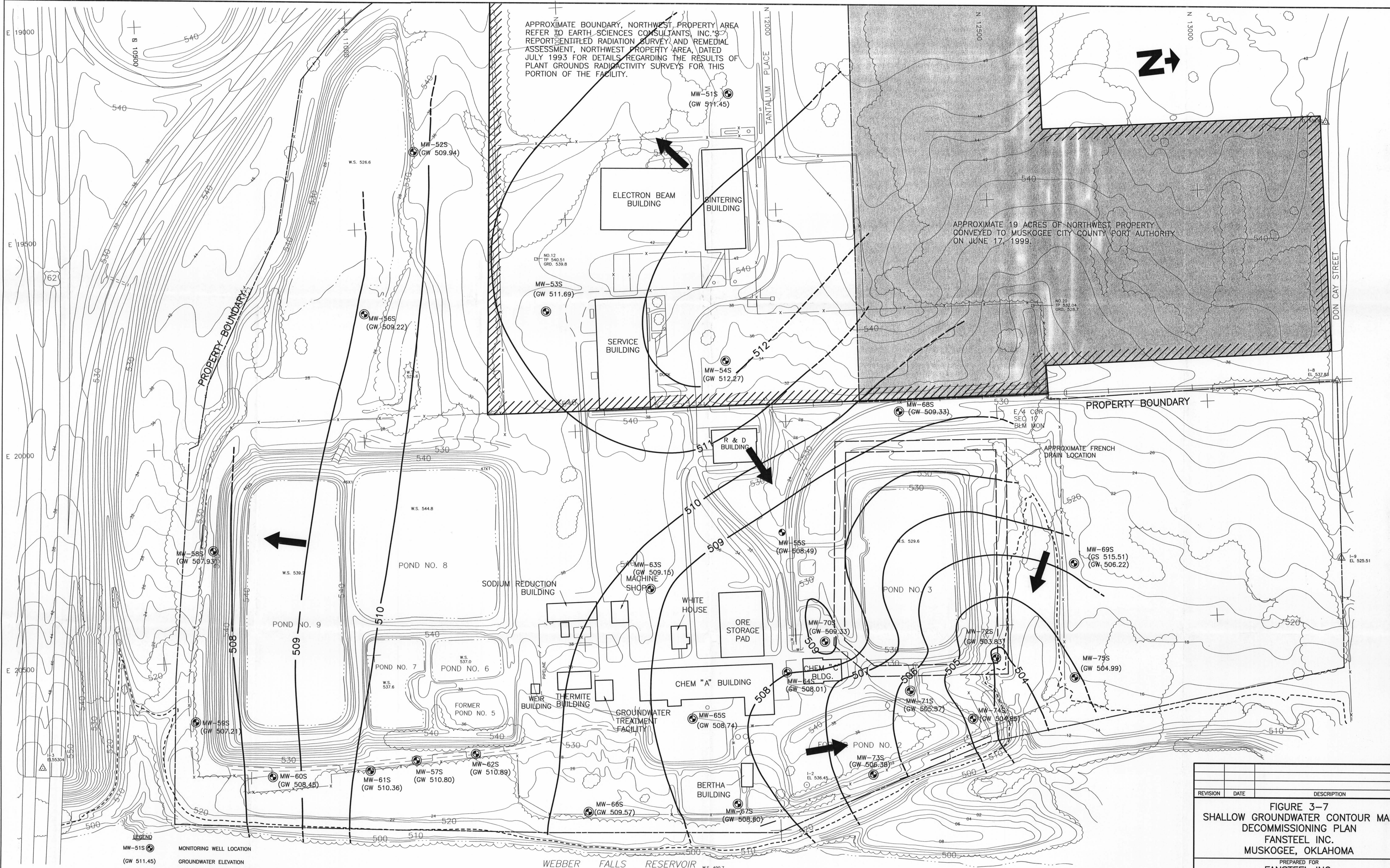


APPROXIMATE BOUNDARY, NORTHWEST PROPERTY AREA REFER TO EARTH SCIENCES CONSULTANTS, INC.'S REPORT ENTITLED RADIATION SURVEY AND REMEDIAL ASSESSMENT, NORTHWEST PROPERTY AREA, DATED JULY 1993 FOR DETAILS REGARDING THE RESULTS OF PLANT GROUNDS RADIOACTIVITY SURVEYS FOR THIS PORTION OF THE FACILITY.

APPROXIMATE 19 ACRES OF NORTHWEST PROPERTY CONVEYED TO MUSKOGEE CITY COUNTY PORT AUTHORITY ON JUNE 17, 1999.



**LEGEND**  
 MW-51S (GW 511.45) MONITORING WELL LOCATION  
 (GW 511.45) GROUNDWATER ELEVATION  
 - - - 509 - - - APPROXIMATE PROPERTY BOUNDARY  
 - - - 509 - - - GROUNDWATER CONTOUR (DASHED WHERE INFERRED)  
 → GROUND FLOW DIRECTION

SCALE - FEET  
 0 100 200 300

REVISION	DATE	DESCRIPTION

**FIGURE 3-7  
 SHALLOW GROUNDWATER CONTOUR MAP  
 DECOMMISSIONING PLAN  
 FANSTEEL INC.  
 MUSKOGEE, OKLAHOMA**

PREPARED FOR  
**FANSTEEL INC.  
 MUSKOGEE, OKLAHOMA**

APPROVED	<i>[Signature]</i>
CHECKED	<i>[Signature]</i>
DRAWN	<i>[Signature]</i>

DRAWING NUMBER  
**6473429**

Earth Sciences Consultants, Inc.

D-05