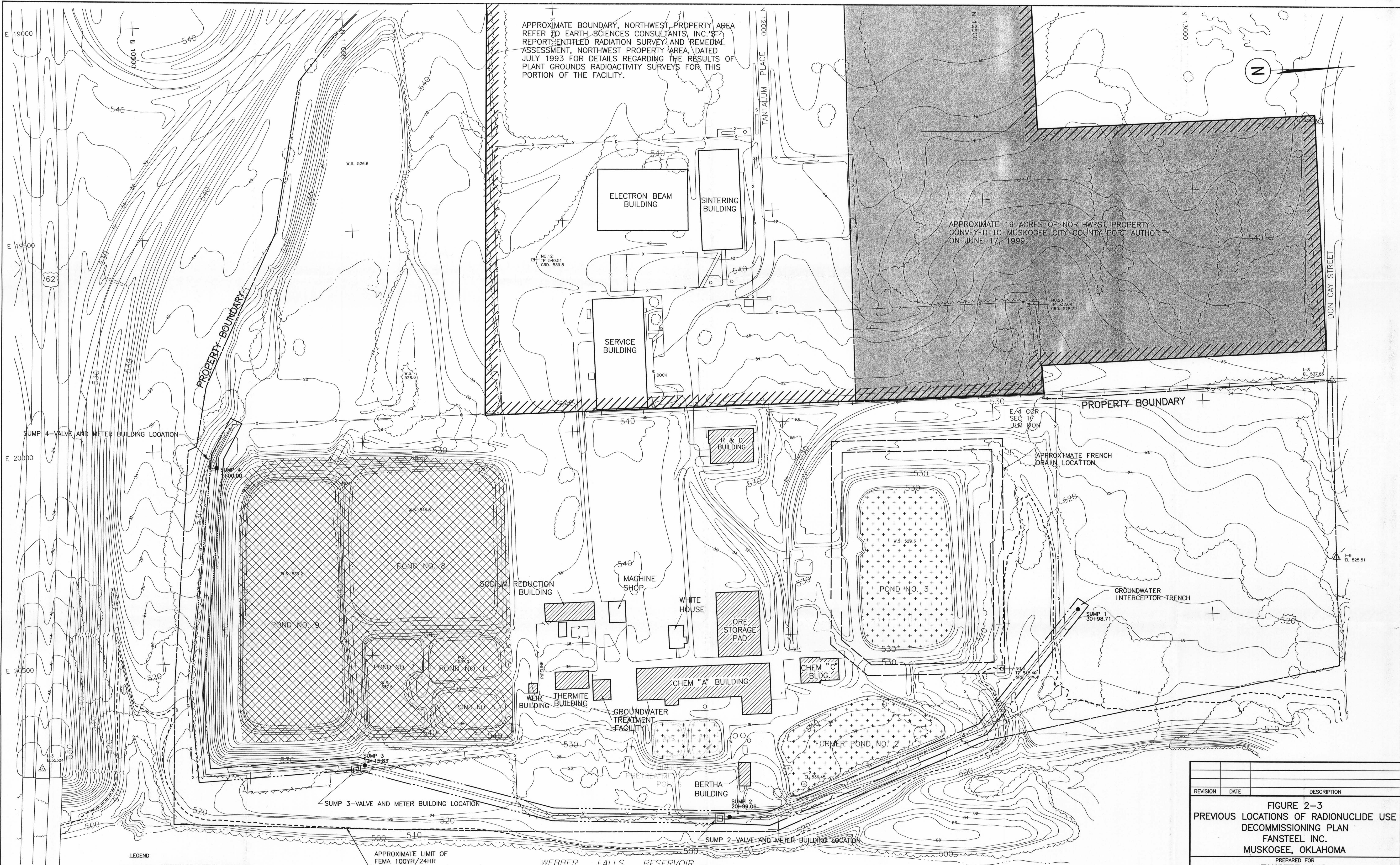


APPROXIMATE BOUNDARY, NORTHWEST PROPERTY AREA REFER TO EARTH SCIENCES CONSULTANTS, INC.'S REPORT ENTITLED RADIATION SURVEY AND REMEDIAL ASSESSMENT, NORTHWEST PROPERTY AREA, DATED JULY 1993 FOR DETAILS REGARDING THE RESULTS OF PLANT GROUNDS RADIOACTIVITY SURVEYS FOR THIS PORTION OF THE FACILITY.

APPROXIMATE 19 ACRES OF NORTHWEST PROPERTY CONVEYED TO MUSKOGEE CITY COUNTY PORT AUTHORITY ON JUNE 17, 1999.



- LEGEND**
- APPROXIMATE PROPERTY BOUNDARY
 - STRUCTURES POTENTIALLY CONTAINING RESIDUAL LICENSED RADIOACTIVE MATERIAL
 - ORE PROCESSING RESIDUES EXHIBITING SIGNIFICANT RADIOACTIVITY
 - RESIDUES EXHIBITING LOW-LEVELS OF RADIOACTIVITY

APPROXIMATE LIMIT OF FEMA 100YR/24HR STORM FLOOD PLAIN (EL. 516.9)



REVISION	DATE	DESCRIPTION
FIGURE 2-3 PREVIOUS LOCATIONS OF RADIONUCLIDE USE DECOMMISSIONING PLAN FANSTEEL INC. MUSKOGEE, OKLAHOMA		
PREPARED FOR FANSTEEL INC. MUSKOGEE, OKLAHOMA		
APPROVED	<i>[Signature]</i>	
CHECKED	<i>[Signature]</i>	
DRAWN	<i>[Signature]</i>	
DRAWING NUMBER		
6473428		Earth Sciences Consultants, Inc.