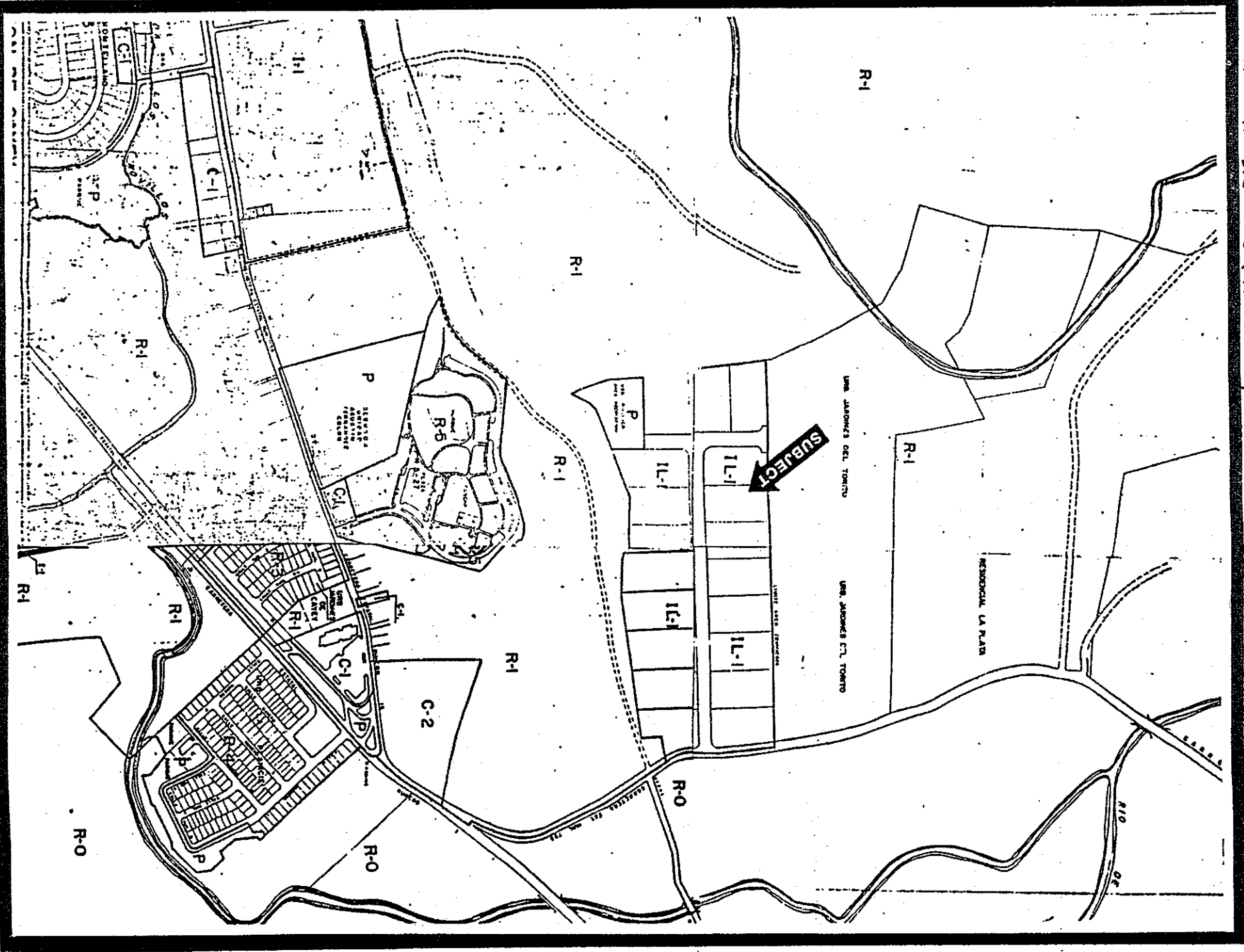


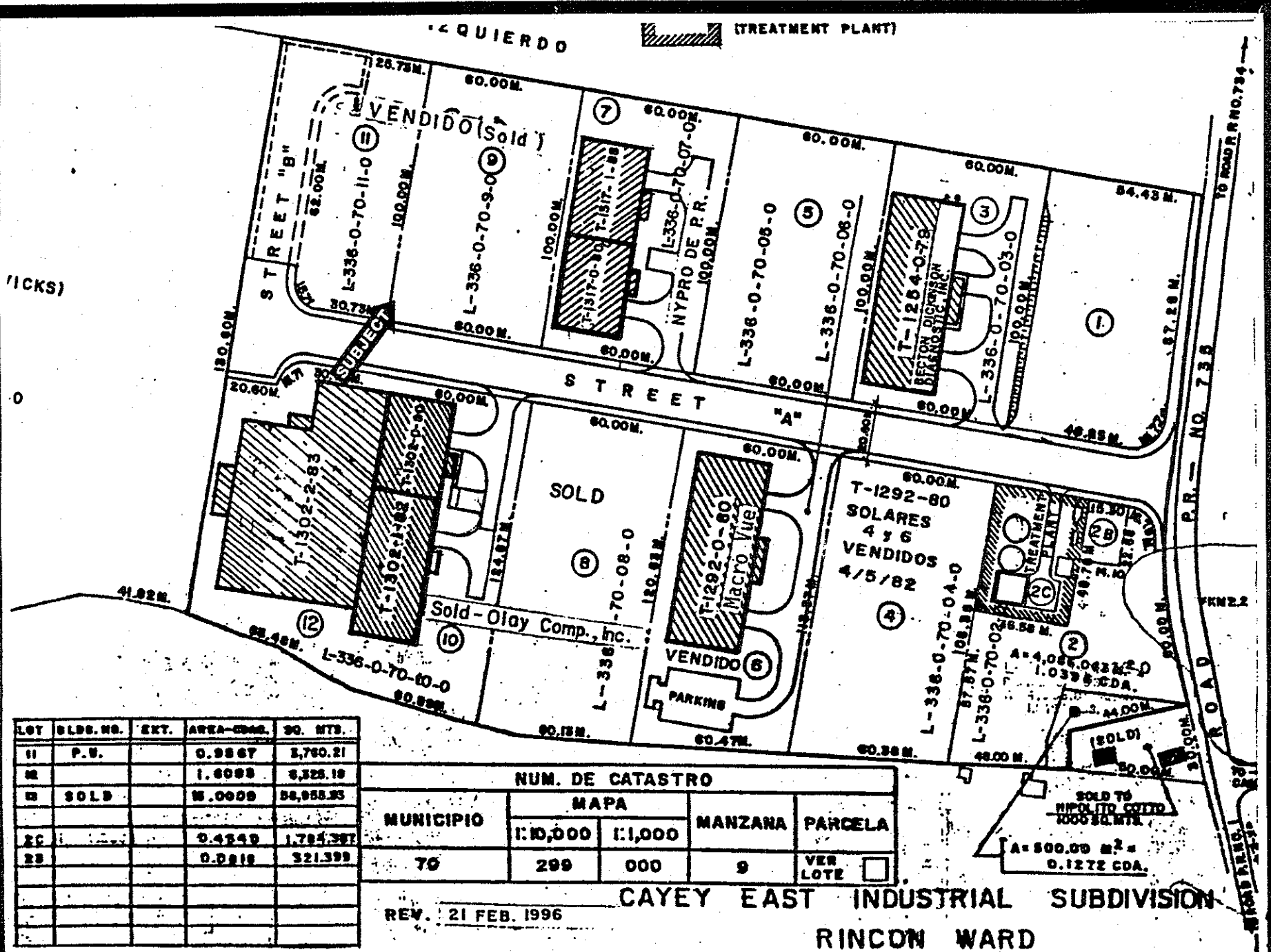
WITTMAYER WORLDWIDE, L.P. ENCLOSURE B (2 of 4)



Zoning Map

Not to Scale. Drawing by SCOTT BROWN 1978

Neighborhood Map



LOT	BLDG. NO.	EXT.	AREA-COM.	SQ. MTS.
11	P.V.		0.9867	2,760.21
12			1.6088	3,328.19
13	SOLD		15.0000	38,955.23
20			0.4549	1,284.397
23			0.0218	521.399

MUNICIPIO	NUM. DE CATASTRO			
	MAPA		MANZANA	PARCELA
	1:10,000	1:1,000		
79	299	000	9	VER LOTE <input type="checkbox"/>

REV. 21 FEB. 1996
 CAYEY EAST INDUSTRIAL SUBDIVISION
 RINCON WARD

WESTNADER WORLDWIDE L.P.
 ENCLOSURE B (3 of 4)

CAYEY

Rincon Ward

IL-1

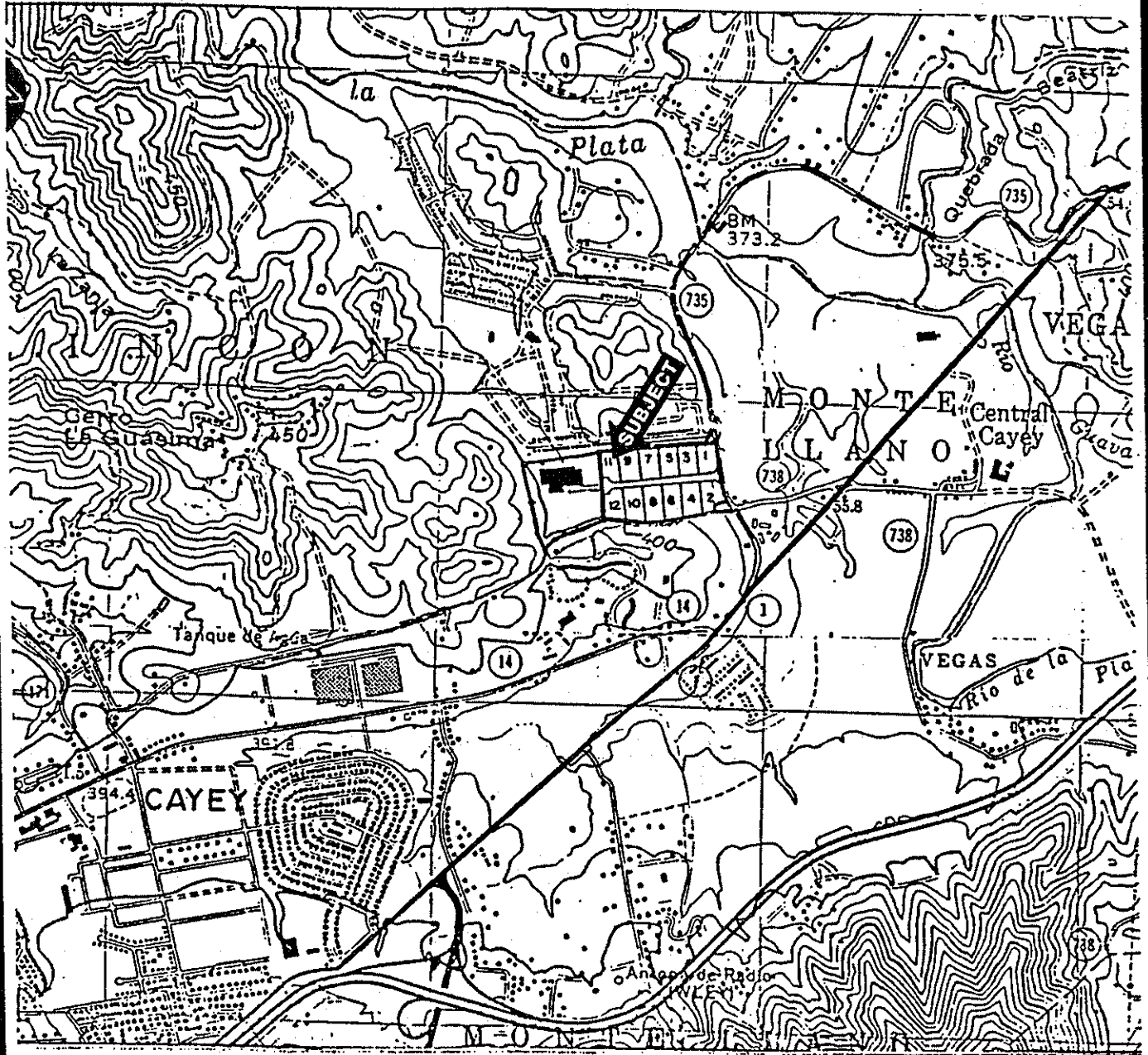
DATE JUNE / 1990

NUMBER

CA-1

LOCATION PLAN

L-336-0-70



V. D. O.

CAYEY QUADRANGLE

SITE NO.

SCALE 1: 20,000

PORTO RICO INDUSTRIAL DEVELOPMENT CO. - PLANNING DEPT. - SAN JUAN, P. R.