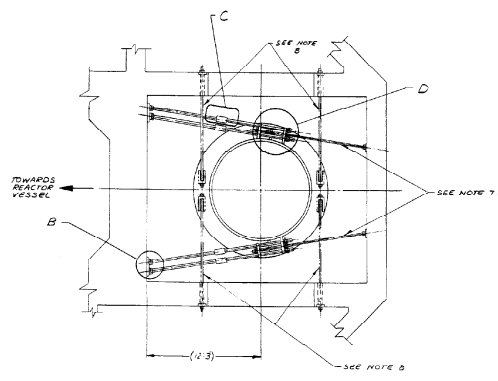
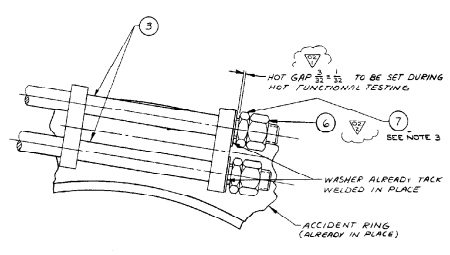


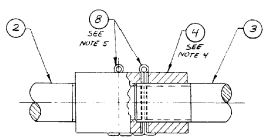
BILL OF MATERIALS QUANTITIES FOR ITEM 23866-321-020 GENERATOR						
ITEM NO.	QUANTITY	UNIT	NAME	ITEM NO.	MATERIAL	REMARKS
1	1	PC	SEC. PC/A ACCIDENT RING SUPPORT FRAME 30 00 00 1			
2	4	ROD				
3	4	ROD				
4	4	SLEEVE				
5	4	WASHER				
6	4	HEX NUT				
7	4	WASHER				
8	4	COTTER PIN				SEE NOTE 6



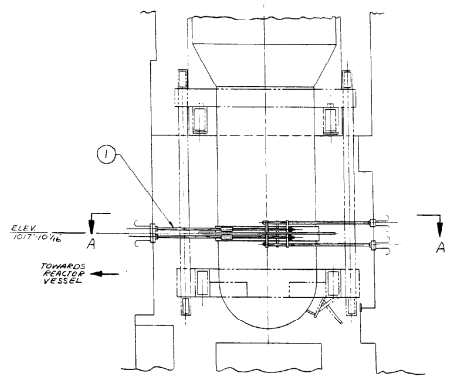
SECTION AA



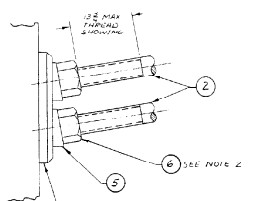
DETAIL D
SCALE: 1/8
TYP. 4 PLACES



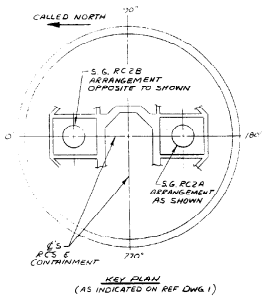
DETAIL C
SCALE: 1/8
TYP. 8 PLACES



ELEVATION



DETAIL B
SCALE: 1/8
TYP. 4 PLACES



- FOR FURTHER INFORMATION REFER TO DWG. 11N05-S-20-1-50.
- REMOVAL OF PREVIOUSLY INSTALLED RODS MAY REQUIRE CUTTING THE RODS.
- THE THREADED RODS PREVIOUSLY INSTALLED IN THESE LOCATIONS MUST REMAIN AS SHOWN ON REF. DWG. 1.
- THE THREADED RODS PREVIOUSLY INSTALLED IN THESE LOCATIONS CAN BE PERMANENTLY REMOVED.
- COTTER RING, ITEM 8, CANNOT BE REUSED; SUFFICIENT RESERVES SHOULD BE PROVIDED IN THE EVENT DISASSEMBLY IS NECESSARY.
- INSERT COTTER RING, ITEM 8, THROUGH SLOTS IN SLEEVE, ITEM 4 AND HOLES IN RODS, ITEMS 2 & 3. BEND BACK BOTH TIPS OF COTTER RING, ITEM 8, UNTIL THE END CONTACT SURFACE OF SLEEVE, ITEM 4, WITH HOLES IN RODS, ITEMS 2 & 3.
- TIGHTEN HEX NUT, ITEM 6, TO 100-125 FT-LBS WHILE HOLDING JAM NUT, ITEM 5, TO ACHIEVE INDICATED.
- TORQUE NUT, ITEM 6, TO PROVIDE TENSION EQUAL TO 75% OF MINIMUM YIELD STRENGTH OF ROD, ITEM 2, (1100 ± 70 FT-LBS).
- THIS DRAWING IS FOR THE RETROFIT OF THE ACCIDENT RING SUPPORT RODS. THE CONFIGURATION SHOWN ON THIS DRAWING SUPERSEDES THAT SHOWN ON REF. DRAWINGS 1 & 2. THE REMOVAL OF SOME OF THE PREVIOUSLY INSTALLED RODS IS NECESSARY FOR REPLACEMENT WITH THE HARDWARE SHOWN IN THE BILL OF MATERIALS. FOR ADDITIONAL CONSIDERATIONS WORK THIS DRAWING WITH C.E. DOCUMENT 23866-321-020, INSTALLATION GUIDELINES.

REFERENCE DRAWING:
1. REACTOR PLANT STEAM GENERATOR STEEL SUPPORTS SHEET 1, GIBBS & HILL DWG. 11N05-S-20.
2. REACTOR PLANT STEAM GENERATOR STEEL SUPPORTS SHEET 2, GIBBS & HILL DWG. 11N05-S-20.

CERTIFIED FOR CONSTRUCTION

E-23866-321-020

NUCLEAR SAFETY RELATED

NO.	DESCRIPTION	DATE	BY	CHKD.	APP.	REVISIONS
1	INITIALLY RELEASED AS CERTIFIED					
2	FOR CONSTRUCTION AND ADDED WORKS PER SHEET PER REV. PER REV. 11N05-S-20					

POWER SYSTEMS	OMAHA PUBLIC POWER DISTRICT	STEAM GENERATOR ACCIDENT RING SUPPORT INSTALLATION
PROJECT NO.	DATE	SCALE
11N05-S-20	11/22/66	1/8