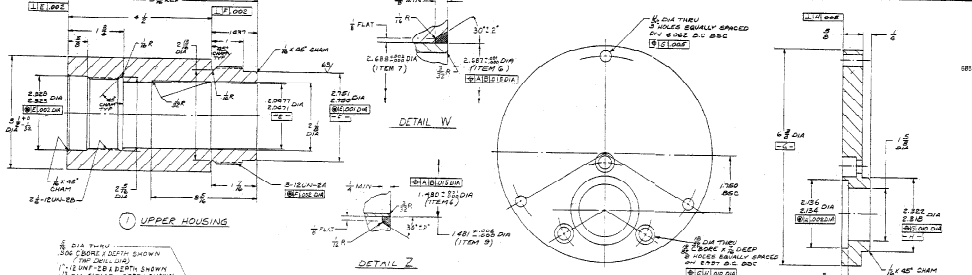
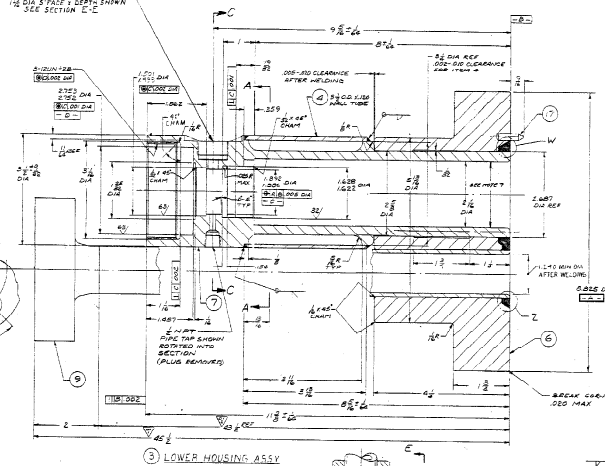


ITEM NO.	DESCRIPTION	QTY	UNIT	MATERIAL	REMARKS
1	UPPER HOUSING	1	PC	SAE 4140	
2	LOWER HOUSING	1	PC	SAE 4140	
3	FLANGE	1	PC	SAE 4140	
4	WASHER	1	PC	SAE 4140	
5	DOZEN PIN	12	PC	SAE 4140	

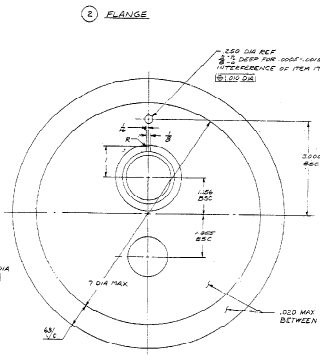


UPPER HOUSING

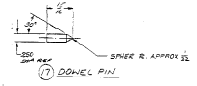
6 DIA THRU IN CORNER LOCUS SHOWN IN SECTION A  
 1.5 DIA THRU IN CORNER LOCUS SHOWN IN SECTION B  
 1.5 DIA THRU IN CORNER LOCUS SHOWN IN SECTION C



LOWER HOUSING ASSY



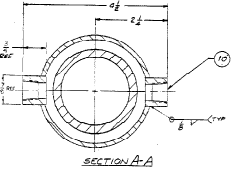
FLANGE



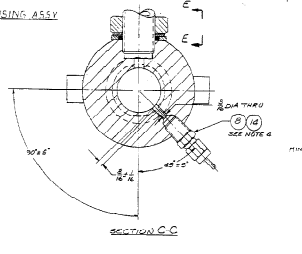
DOZEN PIN

7. 100% 25% MAX DIAMETER PERMITTED IN AREA OF WELD  
 8. ONE PIECE FROM EACH LOT SUPPLIED SHALL BE SELECTED AT RANDOM AND SUBMITTED TO SPECTROGRAPHIC ANALYSIS TO ASCERTAIN THAT MATERIAL IS TYPE 304SS  
 9. ITEMS 12 IS TO BE HAND TIGHT ONLY FINAL INSTALLATION TO BE AT ASSY J-23864-101-01  
 10. ITEM 12 IS TO BE EXAMINED BY VISUAL INSPECTION FROM 8 POSITION TO DETERMINE IF ANY DISCREPANCIES INDICATED UNDER MAINTAINING TO POSITION THIS ITEM MAY BE MADE IN THE FUTURE  
 11. DIMENSION 1 THROUGH 10 ARE THE FINAL ALL DIM ON A COMMON BASIS TO BE CONSIDERED WITHIN 0.001 DIMENSION OTHERS BE ADDED  
 12. THIS ITEM IS A PRESSURE CONTAINING COMPONENTS SHALL BE MANUFACTURED IN ACCORDANCE WITH DESIGN SPEC. SEITE BULKER AND AS A CLASS A VESSEL. SEITE BULKER AND PRESSURE VESSEL CODE SECTION 200 WHICH PRESSURE IS 200 PSI AND MAX DESIGN TEMP IS 650° F

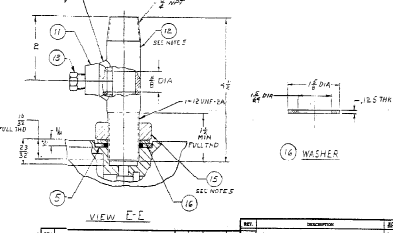
CND-E-2335



SECTION A-A



SECTION C-C



WASHER

NO.	DESCRIPTION	QTY	UNIT	MATERIAL	REMARKS
1	UPPER HOUSING	1	PC	SAE 4140	
2	LOWER HOUSING	1	PC	SAE 4140	
3	FLANGE	1	PC	SAE 4140	
4	WASHER	1	PC	SAE 4140	
5	DOZEN PIN	12	PC	SAE 4140	

CND-E-2335