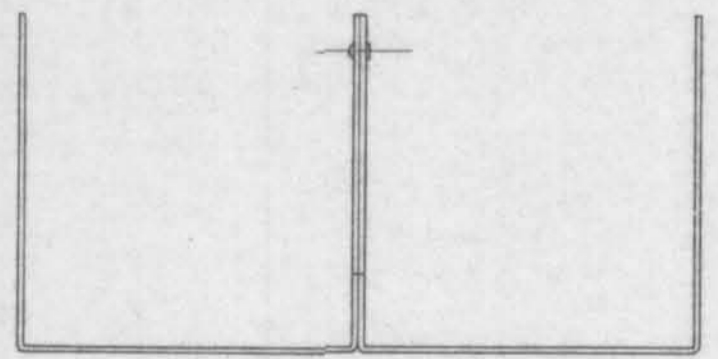


BASKET
 MATL 16 GAGE (.059) CARBON STEEL
 SHEET 2 RECD ONE OPPOSITE HAND



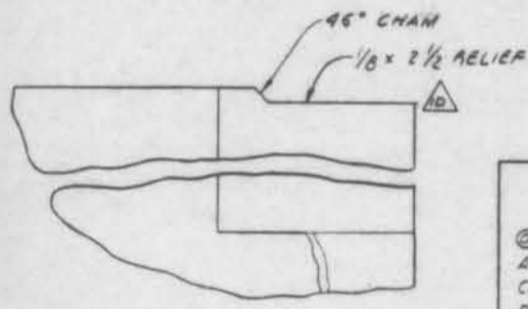
INNER LINER
 CONSISTS OF 2 BASKETS FASTENED
 TOGETHER WITH 3/16 DIA x 1/4 LONG
 STEEL RIVETS. MATCHED ENDS OF
 BASKETS TO BE FLUSH

GENERAL NOTES
 (UNLESS OTHERWISE SPECIFIED)

- ALL DIMENSIONS ARE IN INCHES.
- DIMENSIONING AND TOLERANCING ARE IN ACCORDANCE WITH ANSI Y14.5.
- ALL SURFACES 125 SURFACE FINISH SHALL BE IN ACCORDANCE WITH ANSI B46.1.
- TOLERANCES = 1/32.
- SURFACE PREPARATION**
 ROUND OFF ALL SHARP EDGES AND ROUGH WELDS. ACID PICKLING, ACCORDING TO "STEEL STRUCTURES PAINTING COUNCIL" SPECIFICATION SP 8-63. DRY-ABRASIVE BLAST, INCLUDING ALL PITS AND DEPRESSIONS, REMOVING OIL, GREASE, DIRT, RUST SCALE, AND FOREIGN MATTER FROM SURFACE: BLAST WITH STEEL GRIT (16-20 SIZE), STEEL SHOT (30-30 SIZE) GRADED FLINT OR SILICA SAND (16 MESH). IF REUSING GRIT OR SHOT, REMOVE CONTAMINATION BEFORE USING. SURFACES ARE TO BE PRIMED IMMEDIATELY AFTER SANDBLAST.
- APPLICATION**
 PRIMER - AMERCOAT 185 PRIMER, DRY FILM THICKNESS, 1 TO 1-1/2 MIL THINNER - AMERCOAT 86.
 DRYING TIME: 3 HOUR MIN. @ 70°F 40% RELATIVE HUMIDITY BEFORE FINISH COAT. ALLOW ADDITIONAL TIME FOR LOWER TEMPERATURES AND/OR HIGHER HUMIDITY.
 FINISH COAT - AMERCOAT 234, COLOR YELLOW.
 THINNER - AMERCOAT 6. APPLIED TO INSIDE SURFACES AND CAVITY SURFACES. TWO (2) COATS APPLIED AT 1 MIL TO 1-1/2 MIL PER COAT FOR TOTAL DRY FILM THICKNESS OF 2 MIL TO 3 MIL.
 APPLICATION AND DRYING PER MFR'S SPEC.
 PRIMER TO PROVIDE COMPLETE (100%) COVERAGE OF ALL SURFACES.
 FINISH COAT TO PROVIDE COMPLETE (100%) COVERAGE OF SPECIFIED SURFACES. FINISHED SURFACE TO PRESENT AN ESTHETICALLY PLEASING PRODUCT WITHOUT RUNS OR SAGS.

ABBREVIATIONS

⊙	AT
ALT	ALTERNATE
CHAM	CHAMFER
DIA	DIAMETER
EQL	EQUAL
°F	FAHRENHEIT
MATL	MATERIAL
MFRS	MANUFACTURERS
MIN	MINIMUM
RAD	RADIUS
REF	REFERENCE
RECD	REQUIRED
SP	SPACE
SPEC	SPECIFICATION
TYP	TYPICAL



Z-Z
 TYP ON EACH BASKET
 ONE END

D-1

U.S. Department of Energy Richland Operations Office		QA# 608
PACIFIC NORTHWEST LABORATORY OPERATED BY BATTTELLE MEMORIAL INSTITUTE		
INNER LINER FOR SHIPPING CONTAINER		
NRU-LOCA		
5544		5010
H-3-47512		111

SI
 APERTURE
 CARD

8902270123