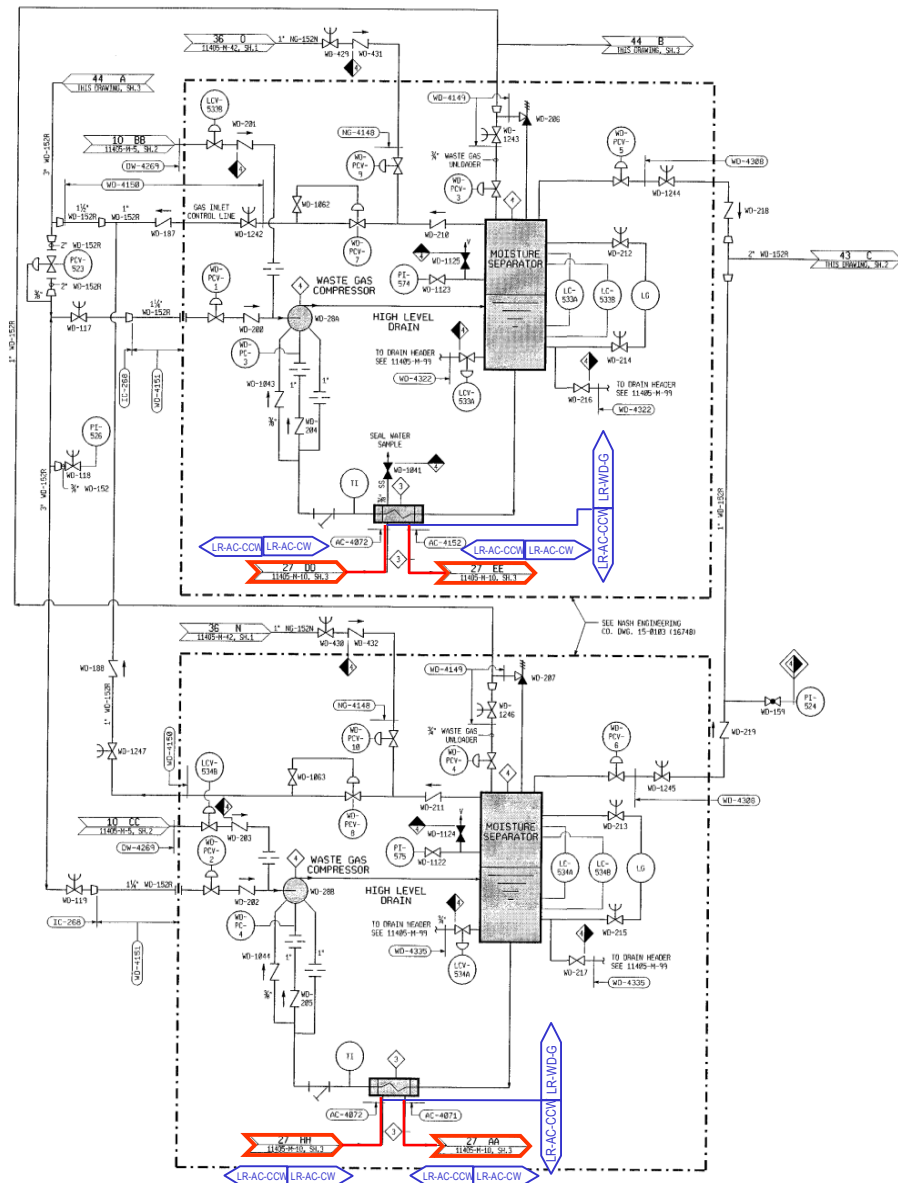


- PORTIONS OF SYSTEM WITHIN LICENSE RENEWAL SCOPE ARE BOUNDED BY LR FLAGS.
- UNLESS OTHERWISE INDICATED, VENTS, DRAINS AND TEST CONNECTIONS THAT ARE WITHIN LICENSE RENEWAL BOUNDARIES ARE INCLUDED IN LR SCOPE TO THE DISCHARGE OF THE VALVE.
- ALL INSTRUMENTATION LINES NORMALLY OPEN TO THE PROCESS SYSTEM, THROUGH AND INCLUDING THE INSTRUMENT, ARE INCLUDED IN LR SCOPE.
- IN GENERAL, LR FLAGS ARE NOT SHOWN FOR VENTS, DRAINS, TEST CONNECTIONS OR INSTRUMENT LINES EXCEPT FOR CONTAINMENT PENETRATIONS.
- THE LICENSE RENEWAL BOUNDARY INCLUDES THE PIPING AND SUPPORTS UP TO THE FIRST SEISMIC SUPPORT PAST THE BLUE BOUNDARY FLAG.



- NOTES:
- NORMALLY OPENED ISOLATING VALVE. VALVE TO BE CLOSED WHEN PURGING VOLUME CONTROL TANK (VCT) IS REQUIRED.
  - SAMPLE LINE ISOLATING VALVE LOCATED IMMEDIATELY OUTSIDE OF GAS DELAY TANK COMPARTMENT.
  - NOTE: SAFETY OPERATING SUPPLY PRESSURE REGULATOR AND PRESSURE INDICATOR LOCATED DOWN STREAM OF ISOLATING VALVE (NOTE B ABOVE).
- MHA ITEMS TAGGED AS FOLLOWS:
- "WASTE GAS ANALYZER" FOLLOWED BY SAMPLE POINT PRESSURE - "SAMPLING POINT 1" FROM TANK WD-210 - "SAMPLING POINT 11" FROM TANK WD-210 - "SAMPLING POINT 12" FROM TANK WD-210 - "SAMPLING POINT 13" FROM TANK WD-210.
- GAS DELAY TANK INDICATED CYCLE
- | TANK        | CYCLE             |
|-------------|-------------------|
| TANK WD-210 | FILL CYCLE        |
| TANK WD-210 | RE USE            |
| TANK WD-210 | STAND-BY          |
| TANK WD-210 | STORAGE FOR DELAY |
- WASTE GAS CIRCUIT
- SEISMIC OPERATING CONDITION
- | LOW RATE NORMAL PROGRAM   | WASTE GAS RECYCLE (FRESE) TO HOLD UP TANKS, VENT SPACE/STAINERS | NEL-40 SCV/300 SCV |
|---------------------------|---|--------------------|
| N. GAS BLANKETING SUPPLY  | 10-13 PSIG/300 PSIG   | 10-13 PSIG         |
| VENT HEADER               | 15-18 PSIG  | 15-18 PSIG         |
| START STAND-BY COMPRESSOR | 20 PSIG   | 20 PSIG            |
| GAS DELAY TANKS           | ATN-118 PSIG  | ATN-118 PSIG       |

EA-FC-00-093 DF 8/02 11 of 11

FORT CALHOUN STATION

WASTE DISPOSAL SYSTEM  
FLOW DIAGRAM  
P & ID

DWG. 11405-H-58 SH. 1  
REV. 142  
FILE 10452  
REV 58

FOR INFORMATION ONLY

NOTE: THIS PRINT IS TO BE USED FOR THE FCS LICENSE RENEWAL PROJECT ONLY.  
IT MAY NOT REFLECT THE MOST CURRENT REVISION OF THIS DRAWING.

42