

**AmerGen**

**Exelon**<sup>SM</sup>

---

Nuclear

# Exelon/AmerGen Licensing Meeting with NRC

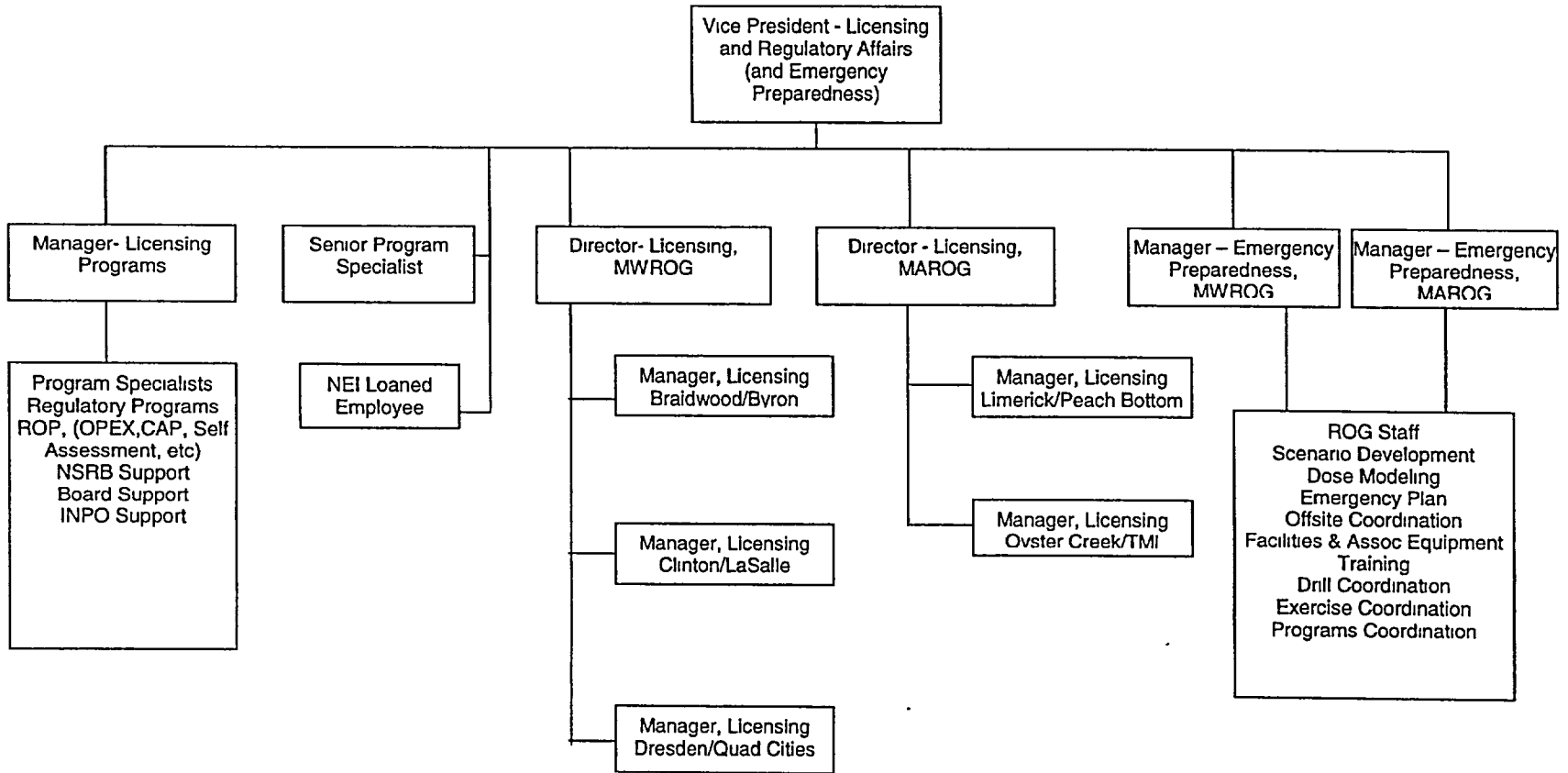
October 15, 2002

Attachment 2

# Agenda

- Introductions
- Organizational Structure
- LAR Plan Implementation (RIS 2001-21)
- Business Planning Process
  - BRIM
  - Fleet-wide submittals
  - Outage Planning
- NRC Feedback
- Regional Break-out Sessions
  - Submittals currently with NRC
  - Upcoming submittals

# Organizational Structure



# RIS 2001-21 “Licensing Action Estimates” Implementation

Site	Submittals Planned thru 9/30/03	Items Submitted as of 10/1/02 *	Items Deferred beyond 9/30/03	Items Remaining to be Submitted
Braidwood	12	4	3	5
Byron	11	4	3	4
Clinton	2	1	0	1
Dresden	12	3	1	8
LaSalle	2	1	0	1
Limerick	13	6	3	4
Oyster Creek	17	4	6	7
Peach Bottom	10	4	1	5
Quad Cities	9	2	1	6
TMI	14	5	5	4
Common	8	0	2	6
Total	110	34	25	51
* Does not include emergent items				

# Emergent Submittals not included in RIS 2001-21 Response

<u>Site</u>	Emergent Items <u>Submitted</u>	Emergent Items <u>To Be Submitted</u>
Braidwood	0	3
Byron	0	3
Clinton	1	5
Dresden	6	4
LaSalle	4	1
Limerick	1	2
Oyster Creek	2	3
Peach Bottom	0	3
Quad Cities	6	3
TMI	2	2
Common	1	0
<b>Total</b>	<b>23</b>	<b>29</b>

# Business Planning Process

- Burden Reduction Issues Menu (BRIM)
  - Fleet-wide integration and planning
- Business Planning Cycle
- Fleet-wide submittals planned (7)
- Outage Milestones
  - T-18 months
  - T-15 months
  - T-12 months

# Opportunity for NRC Feedback

# Break-out Sessions

- Regional Break-outs
  - Review submittals currently with NRC
  - Identify remaining submittals planned for 2002
  - Identify submittals planned for 2003