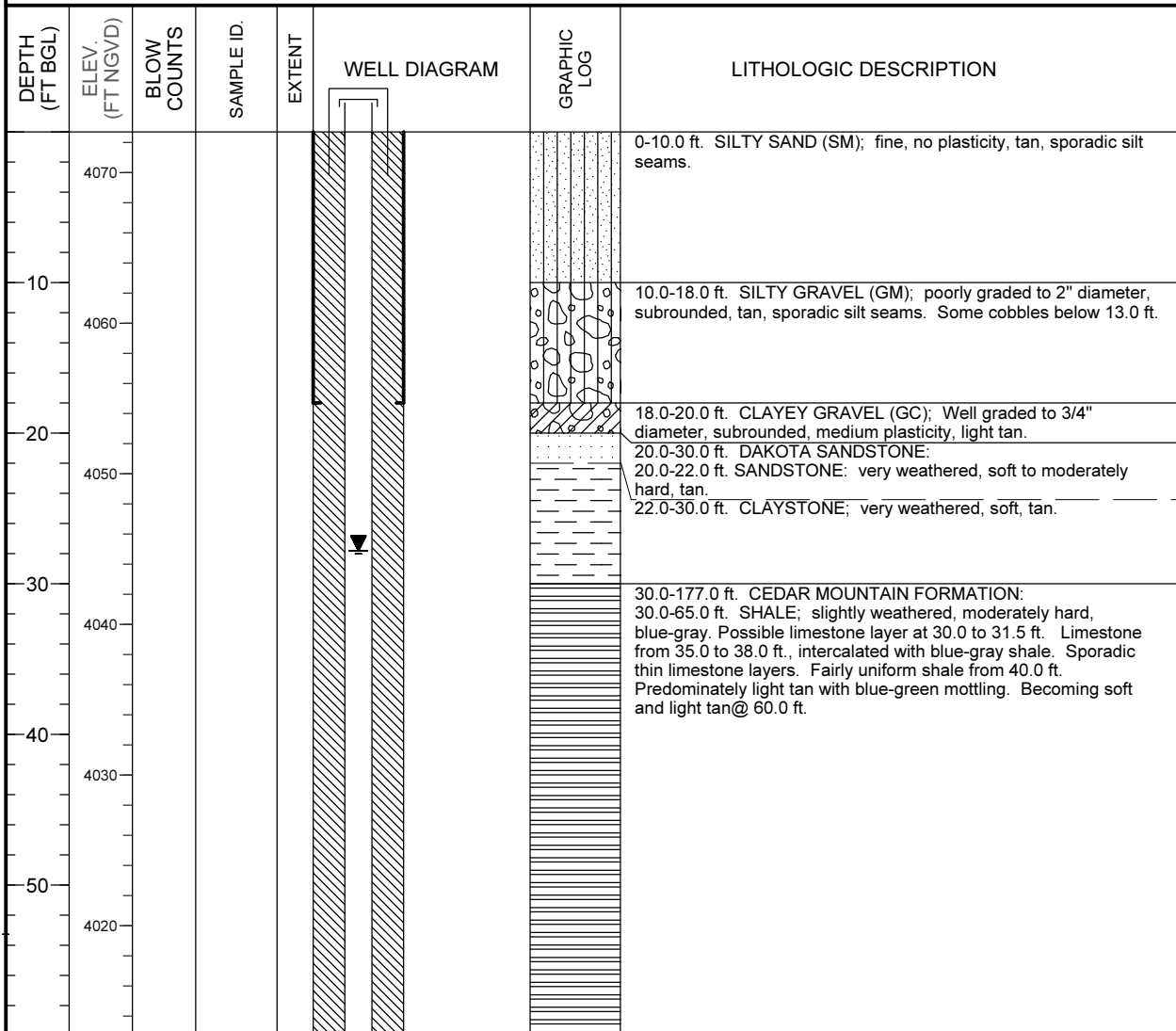


MONITORING WELL COMPLETION LOG GRN01-0819

PROJECT <u>UMTRA GROUND WATER</u>	NORTH COORD. (FT) <u>238976.65</u>	DATE DRILLED <u>09/15/1987 to 09/23/1987</u>
LOCATION <u>GREEN RIVER, UT</u>	EAST COORD. (FT) <u>2386718.08</u>	SURFACE ELEV. (FT NGVD) <u>4072.70</u>
SITE <u>GREEN RIVER</u>	HOLE DEPTH (FT) <u>177.00</u>	TOP OF CASING (FT) <u>4074.88</u>
WELL NUMBER <u>0819</u>	WELL DEPTH (FT) <u>167.80</u>	MEAS. PT. ELEV. (FT) <u>4074.88</u>

	WELL INSTALLATION	INTERVAL (FT)	
SURFACE CASING:	8 in. Steel	-2.0 to 18.0	
BLANK CASING:	4 in. PVC Sch 40	-2.18 to 146.0	DRILLING METHOD <u>ROTARY WITH BUTTON BIT</u>
WELL SCREEN:	4 in. Slotted PVC	146.0 to 166.0	SAMPLING METHOD _____
SUMP/END CAP:	4 in. PVC Sch 40	166.0 to 167.8	DATE DEVELOPED _____
SURFACE SEAL:			WATER LEVEL (FT BTOC) <u>30.0 on 09/15/1987</u>
GROUT:	Cement - Bentonite	0.0 to 131.4	LOGGED BY <u>Wood, W.</u>
SEAL:	Bentonite Pellets	131.4 to 133.2	REMARKS _____
UPPER PACK:			
LOWER PACK:	8-12 Silica Sand	133.2 to 136.4	



MONITORING WELL COMPLETION LOG GRN01-0819

PROJECT <u>UMTRA GROUND WATER</u>	WELL NUMBER <u>0819</u>
SITE <u>GREEN RIVER</u>	DATES DRILLED <u>09/15/1987 to 09/23/1987</u>

Continued from Previous Page

DEPTH (FT BGL)	ELEV. (FT NGVD)	BLOW COUNTS	SAMPLE ID.	EXTENT	WELL DIAGRAM	GRAPHIC LOG	LITHOLOGIC DESCRIPTION
4010							65.0-67.0 ft. SANDSTONE; fresh, hard, light gray.
70				67.0-90.0 ft. SHALE; moderately weathered, soft, light green-gray (somewhat calcareous). @70.0 ft. slightly weathered, moderately hard, light tan to light green gray.			
4000							
80							
3990							
90							90.0-101.0 ft. SANDSTONE; fresh, hard, light tan to light gray.
3980							
100							101.0-154.0 ft. SHALE; calcareous, slightly weathered, moderately hard to soft, gray to dark purple, sporadic thin layers of limestone. Becoming purple @ 118.0 ft.
3970							
110							
3960							
120							
3950							
130							
3940							

MONITORING WELL COMPLETION LOG GRN01-0819

PROJECT <u>UMTRA GROUND WATER</u>	WELL NUMBER <u>0819</u>
SITE <u>GREEN RIVER</u>	DATES DRILLED <u>09/15/1987 to 09/23/1987</u>

Continued from Previous Page

DEPTH (FT BGL)	ELEV. (FT NGVD)	BLOW COUNTS	SAMPLE ID.	EXTENT	WELL DIAGRAM	GRAPHIC LOG	LITHOLOGIC DESCRIPTION
-140	3930						<p>154.0-177.0 ft. SANDSTONE; fresh, very fine grained, moderately hard to hard, light gray.</p>
-150	3920						
-160	3910						
-170	3900						
-180	3890						Total Depth 177.0 ft.
-190	3880						
-200	3870						
-210	3860						