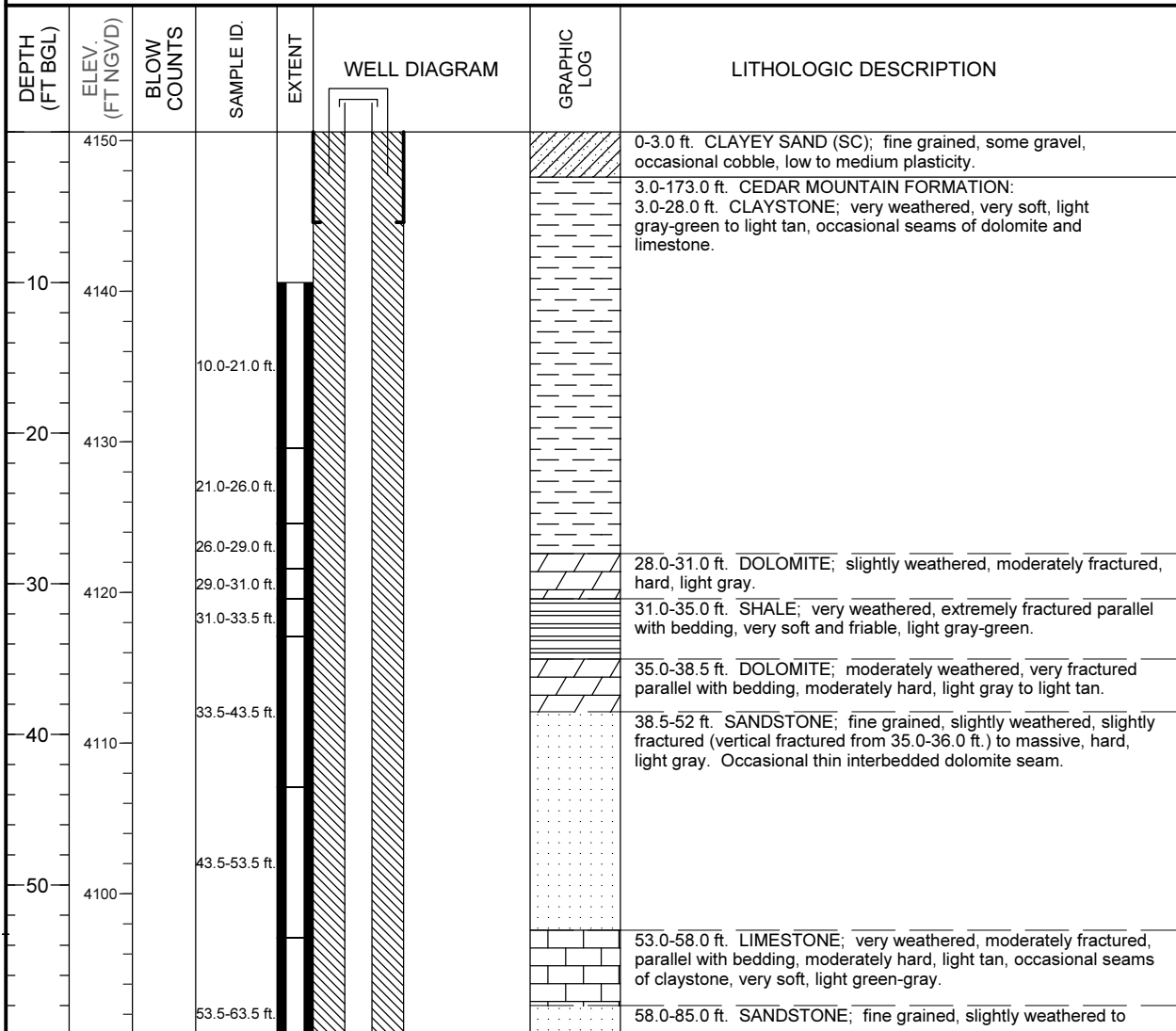


MONITORING WELL COMPLETION LOG GRN01-0818

PROJECT <u>UMTRA GROUND WATER</u>		NORTH COORD. (FT) <u>237526.68</u>	DATE DRILLED <u>10/07/1987</u>
LOCATION <u>GREEN RIVER, UT</u>		EAST COORD. (FT) <u>2387659.08</u>	SURFACE ELEV. (FT NGVD) <u>4150.58</u>
SITE <u>GREEN RIVER</u>		HOLE DEPTH (FT) <u>187.00</u>	TOP OF CASING (FT) <u>4152.47</u>
WELL NUMBER <u>0818</u>		WELL DEPTH (FT) <u>187.00</u>	MEAS. PT. ELEV. (FT) <u>4152.47</u>
			SLOT SIZE (IN) <u>0.050</u>
			BIT SIZE(S) (IN) <u>10.0 / 7.88</u>
WELL INSTALLATION		INTERVAL (FT)	DRILLING METHOD <u>ROTARY WITH BUTTON BIT</u>
SURFACE CASING:	8 in. Steel	-2.0 to 6.0	SAMPLING METHOD <u>CORE</u>
BLANK CASING:	4 in. PVC Sch 40	-1.89 to 165.0	DATE DEVELOPED _____
WELL SCREEN:	4 in. Slotted PVC	165.0 to 165.0	WATER LEVEL (FT BGS) _____
SUMP/END CAP:	4 in. PVC Sch 40	165.0 to 185.0	LOGGED BY <u>Wood, W.</u>
SURFACE SEAL:			REMARKS _____
GROUT:	Cement - Bentonite	0.0 to 150.0	
SEAL:	Bentonite Pellets	150.0 to 153.0	
UPPER PACK:			
LOWER PACK:	8-12 Silica Sand	153.0 to 187.0	



MONITORING WELL COMPLETION LOG GRN01-0818

PROJECT UMTRA GROUND WATER **WELL NUMBER** 0818
SITE GREEN RIVER **DATES DRILLED** 10/07/1987

Continued from Previous Page

DEPTH (FT BGL)	ELEV. (FT NGVD)	BLOW COUNTS	SAMPLE ID.	EXTENT	WELL DIAGRAM	GRAPHIC LOG	LITHOLOGIC DESCRIPTION
70	4090						fresh, slightly fractured to massive, some thin limestone seams, hard, light gray, vertical fractures from 53.5 to 54.0 ft. @65.0 ft. thinly bedded and medium grained.
	4080		63.5-73.3 ft.				@79.5 ft. conglomerate layer to 80.0 ft., and from 82.5 to 83.5 ft. Some pyrite from 82.5 ft.
			73.3-78.5 ft.				85.0-90.0 ft. MUDSTONE; very to moderately fractured, slightly weathered, fractured predominately parallel with bedding, moderately hard, gray.
	4070		78.5-79.5 ft.				90.0-92.0 ft. LIMESTONE; slightly weathered, slightly to moderately fractured, (near vertical fracture @92.0 ft.), small amount of pyrite mineralization in vertical fracture, hard, gray.
			80.0-83.5 ft.				92.0-110.0 ft. MUDSTONE; slightly fractured, slightly weathered, vertical fractures @ 92.5 and 93.0 ft., (some pyrite in vertical fractures), moderately hard, gray. @ 98.0 ft. mudstone becomes calcareous, very to moderately fractured, moderately weathered, occasional 45 to 60 degree fractures, moderately hard, light purple to gray. @102.0 ft. mudstone becomes very to moderately fractured, slightly weathered, moderately hard, and gray.
	4060		83.5-93.5 ft.				110.0-112.0 ft. LIMESTONE; moderately weathered, moderately fractured, some mudstone and shale inclusions, moderately hard, lavender to light gray.
			93.5-103.5 ft.				112.0-115.0 ft. MUDSTONE; very to moderately fractured, moderately weathered, moderately hard, greenish-gray.
	4050		103.5-106.5 ft.				115.0-119.0 ft. SANDSTONE (ARKOSE); moderately weathered, moderately to very fractured, fine grained, some limestone, inclusions, moderately hard, dark purple.
			106.5-110.0 ft.				119.0-154.0 ft. MUDSTONE; slightly weathered, moderately fractured, some limestone inclusions, moderately hard, dark purple to light greenish-gray. Occasional very weathered and very soft zone. Occasional vertical and high angle fractures between 130.0 and 145.0 ft.
	4040		110.0-113.5 ft.				
			113.5-119.8 ft.				
	4030		119.8-129.8 ft.				
			129.8-133.4 ft.				
	4020						

MONITORING WELL COMPLETION LOG GRN01-0818

PROJECT <u>UMTRA GROUND WATER</u>	WELL NUMBER <u>0818</u>
SITE <u>GREEN RIVER</u>	DATES DRILLED <u>10/07/1987</u>

Continued from Previous Page

DEPTH (FT BGL)	ELEV. (FT NGVD)	BLOW COUNTS	SAMPLE ID.	EXTENT	WELL DIAGRAM	GRAPHIC LOG	LITHOLOGIC DESCRIPTION
140	4010		133.4-143.5 f				
150	4000		143.5-153.3 f		Bentonite Pellets		
160	3990		153.3-163.5 f		0.050" Slotted PVC		154.0-168.0 ft. SANDSTONE; moderately weathered, very to moderately fractured, vertical fracture @ 160.0 to 161.0 ft., soft to moderately hard, gray to light gray. NOTE: small seams of conglomeratic sandstone from 160.0 to 162.0 ft. Some calcite in fractures.
170	3980		163.5-173.5 f		8-12 Silica Sand		@165.0 ft. moderately weathered, very fractured, very soft, light gray.
180	3970		173.5-183.5 f		Slotted PVC		168.0-173.0 ft. CONGLOMERATE; poorly cemented, moderately weathered, very fractured, soft, light gray to gray. Near vertical fracture at 169.0 ft.
183.3	3960		183.3-187.0 f				173-187.0 ft. MORRISON FORMATION, BRUSHY BASIN MEMBER: MUDSTONE; moderately weathered, very fractured, moderately hard, dark purple to greenish gray. Fine grained sandstone hard 6" seam @184.0 ft. Moderate H ₂ S odor.
Total Depth 187.0 ft.							