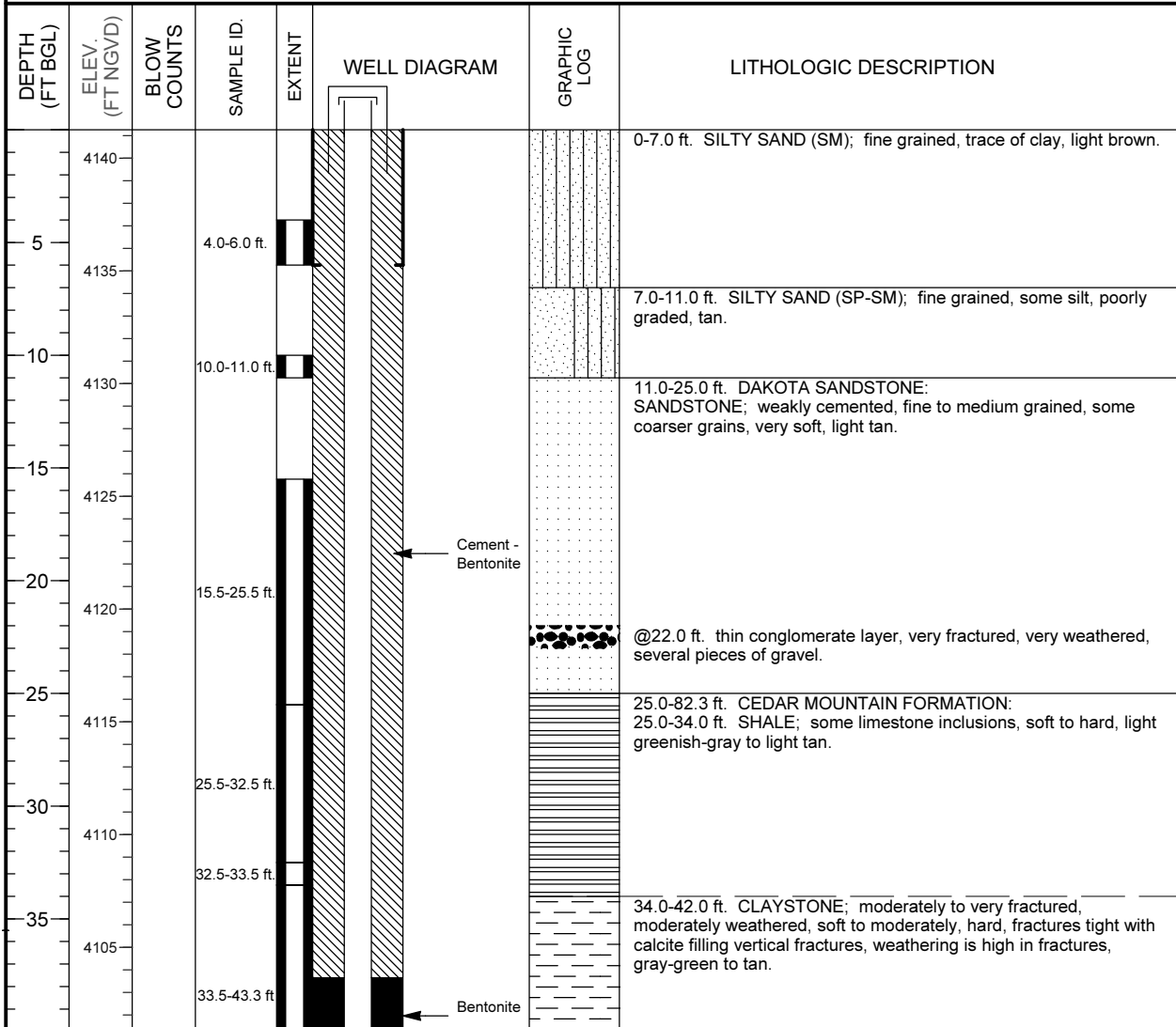


## MONITORING WELL COMPLETION LOG GRN01-0816

PROJECT <u>UMTRA GROUND WATER</u>	NORTH COORD. (FT) <u>237776.17</u>	DATE DRILLED <u>08/27/1987 to 09/01/1987</u>
LOCATION <u>GREEN RIVER, UT</u>	EAST COORD. (FT) <u>2387476.26</u>	SURFACE ELEV. ( FT NGVD) <u>4141.26</u>
SITE <u>GREEN RIVER</u>	HOLE DEPTH (FT) <u>82.30</u>	TOP OF CASING (FT) <u>4143.91</u>
WELL NUMBER <u>0816</u>	WELL DEPTH (FT) <u>59.70</u>	MEAS. PT. ELEV. (FT) <u>4143.91</u>

	<b>WELL INSTALLATION</b>	<b>INTERVAL (FT)</b>	
<b>SURFACE CASING:</b>	8 in. Steel	-2.3 to 6.0	
<b>BLANK CASING:</b>	4 in. PVC Sch 40	-2.65 to 47.7	<b>DRILLING METHOD</b> <u>ROTARY WITH BUTTON BIT</u>
<b>WELL SCREEN:</b>	4 in. Slotted PVC	47.7 to 57.7	<b>SAMPLING METHOD</b> <u>CORE</u>
<b>SUMP/END CAP:</b>	4 in. PVC Sch 40	57.7 to 59.7	<b>DATE DEVELOPED</b> _____
<b>SURFACE SEAL:</b>			<b>WATER LEVEL (FT BGS)</b> _____
<b>GROUT:</b>	Cement - Bentonite	0.0 to 37.6	<b>LOGGED BY</b> <u>Wood, W.</u>
<b>SEAL:</b>	Bentonite Pellets	37.6 to 41.0	<b>REMARKS</b> _____
<b>UPPER PACK:</b>			
<b>LOWER PACK:</b>	8-12 Silica Sand	41.0 to 60.0	



## MONITORING WELL COMPLETION LOG GRN01-0816

<b>PROJECT</b> <u>UMTRA GROUND WATER</u>	<b>WELL NUMBER</b> <u>0816</u>
<b>SITE</b> <u>GREEN RIVER</u>	<b>DATES DRILLED</b> <u>08/27/1987 to 09/01/1987</u>

*Continued from Previous Page*

DEPTH (FT BGL)	ELEV. (FT NGVD)	BLOW COUNTS	SAMPLE ID.	EXTENT	WELL DIAGRAM	GRAPHIC LOG	LITHOLOGIC DESCRIPTION
4100					Pellets		
45					PVC Sch 40		42.0-60.5 ft. MUDSTONE; slightly weathered, moderately to slightly fractured, hard, light gray.
4095				43.3-52.3 ft.	8-12 Silica Sand		@46.0 ft. quartz in some fractures. From 46.0-50.0 ft. very soft zone.
50					0.050" Slotted PVC		
4090							
55							@56.0 ft. sporadic thin shale layers.
4085				52.3-62.3 ft.	Bentonite Pellets		60.5-69.0 ft. SANDSTONE; moderately weathered, slightly to moderately fractured, moderately hard, dark brown.
60							@63.5 ft. becomes slightly fractured, hard, gray.
4080							
65				62.3-72.3 ft.			69-75.0 ft. SANDSTONE; medium grained to coarse grained, slightly weathered, slightly to moderately fractured, some conglomerate layers, dark gray to brown.
4075					Slough		
70							75.0-82.3 ft. CLAYSTONE; moderately weathered, intensely to moderately fractured, some limestone inclusions, sporadic pyrite nodules, soft to moderately hard, light greenish-gray.
4070							
75				72.3-82.3 ft.			
4065							
80							Total Depth 82.3 ft.
4060							
85							
4055							
90							