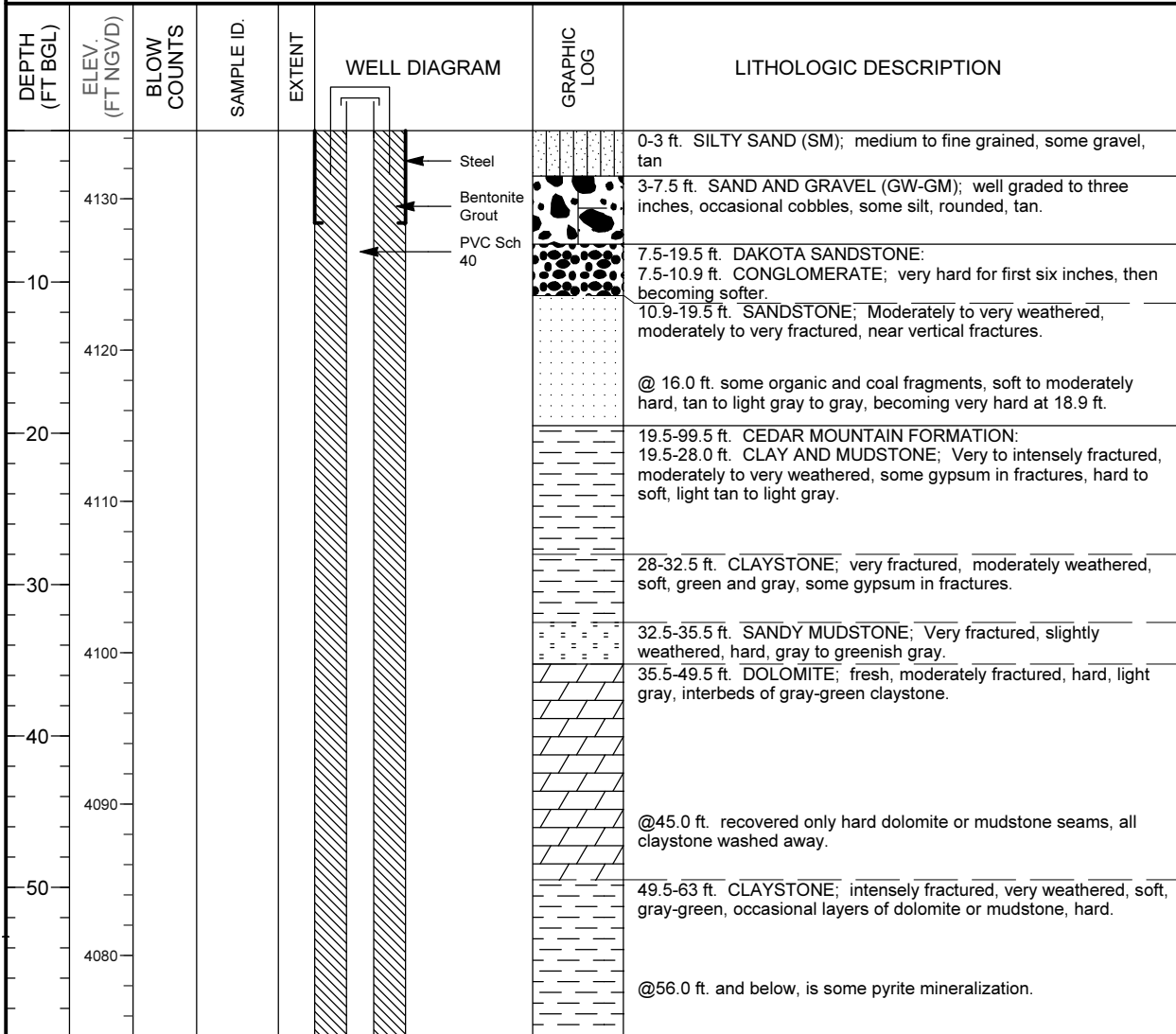


## MONITORING WELL COMPLETION LOG GRN01-0813

<b>PROJECT</b> <u>UMTRA GROUND WATER</u>	<b>NORTH COORD. (FT)</b> <u>238010.09</u>	<b>DATE DRILLED</b> <u>09/02/1987</u>
<b>LOCATION</b> <u>GREEN RIVER, UT</u>	<b>EAST COORD. (FT)</b> <u>2387146.38</u>	<b>SURFACE ELEV. ( FT NGVD)</b> <u>4134.50</u>
<b>SITE</b> <u>GREEN RIVER</u>	<b>HOLE DEPTH (FT)</b> <u>99.50</u>	<b>TOP OF CASING (FT)</b> <u>4136.36</u>
<b>WELL NUMBER</b> <u>0813</u>	<b>WELL DEPTH (FT)</b> <u>99.50</u>	<b>MEAS. PT. ELEV. (FT)</b> <u>4136.36</u>

	<b>WELL INSTALLATION</b>	<b>INTERVAL (FT)</b>
<b>SURFACE CASING:</b>	8 in. Steel	0.0 to 6.1
<b>BLANK CASING:</b>	4 in. PVC Sch 40	-1.86 to 77.7
<b>WELL SCREEN:</b>	4 in. Slotted PVC	77.7 to 97.7
<b>SUMP/END CAP:</b>	4 in. PVC Sch 40	97.7 to 99.5
<b>SURFACE SEAL:</b>		
<b>GROUT:</b>	Bentonite Grout	0.0 to 65.5
<b>SEAL:</b>	Bentonite Pellets	65.5 to 68.5
<b>UPPER PACK:</b>		
<b>LOWER PACK:</b>	8-12 Silica Sand	68.5 to 99.5

<b>DRILLING METHOD</b> <u>CORE/ROTARY</u>
<b>SAMPLING METHOD</b> _____
<b>DATE DEVELOPED</b> <u>09/11/1987</u>
<b>WATER LEVEL (FT BGS)</b> _____
<b>LOGGED BY</b> <u>Wood, W.</u>
<b>REMARKS</b> _____



## MONITORING WELL COMPLETION LOG GRN01-0813

<b>PROJECT</b> <u>UMTRA GROUND WATER</u>	<b>WELL NUMBER</b> <u>0813</u>
<b>SITE</b> <u>GREEN RIVER</u>	<b>DATES DRILLED</b> <u>09/02/1987</u>

*Continued from Previous Page*

DEPTH (FT BGL)	ELEV. (FT NGVD)	BLOW COUNTS	SAMPLE ID.	EXTENT	WELL DIAGRAM	GRAPHIC LOG	LITHOLOGIC DESCRIPTION
4070					<p style="margin-left: 100px;">Bentonite Pellets</p> <p style="margin-left: 100px;">8-12 Silica Sand</p> <p style="margin-left: 100px;">0.050" Slotted PVC</p> <p style="margin-left: 100px;">Sump/End Cap</p>		<p>63-90 ft. SANDSTONE; Fresh to moderately weathered, moderately to very fractured, moderately hard, light gray to brown, occasional seam of siltstone, soft, greenish gray.</p> <p>70.5-72.0 ft. carbonaceous layer, some pyrite in fractures.</p> <p>Note: thin conglomerate seams at 73.5 ft, 76.0 ft., 77.0 ft, 82.0 ft., 84.5 ft., 85.0 ft., and 86.0 ft., occasional seam of conglomeratic claystone.</p>
70							
4060							
80							
4050							
90							
4040							<p>90-99.5 ft. CLAYSTONE; friable, some limestone inclusions, some pyrite in fractures, very fractured, moderately to very weathered, soft, grayish-green, occasional dolomite layer.</p>
100							Total Depth 99.5 ft.
4030							
110							
4020							
120							
4010							
130							
4000							