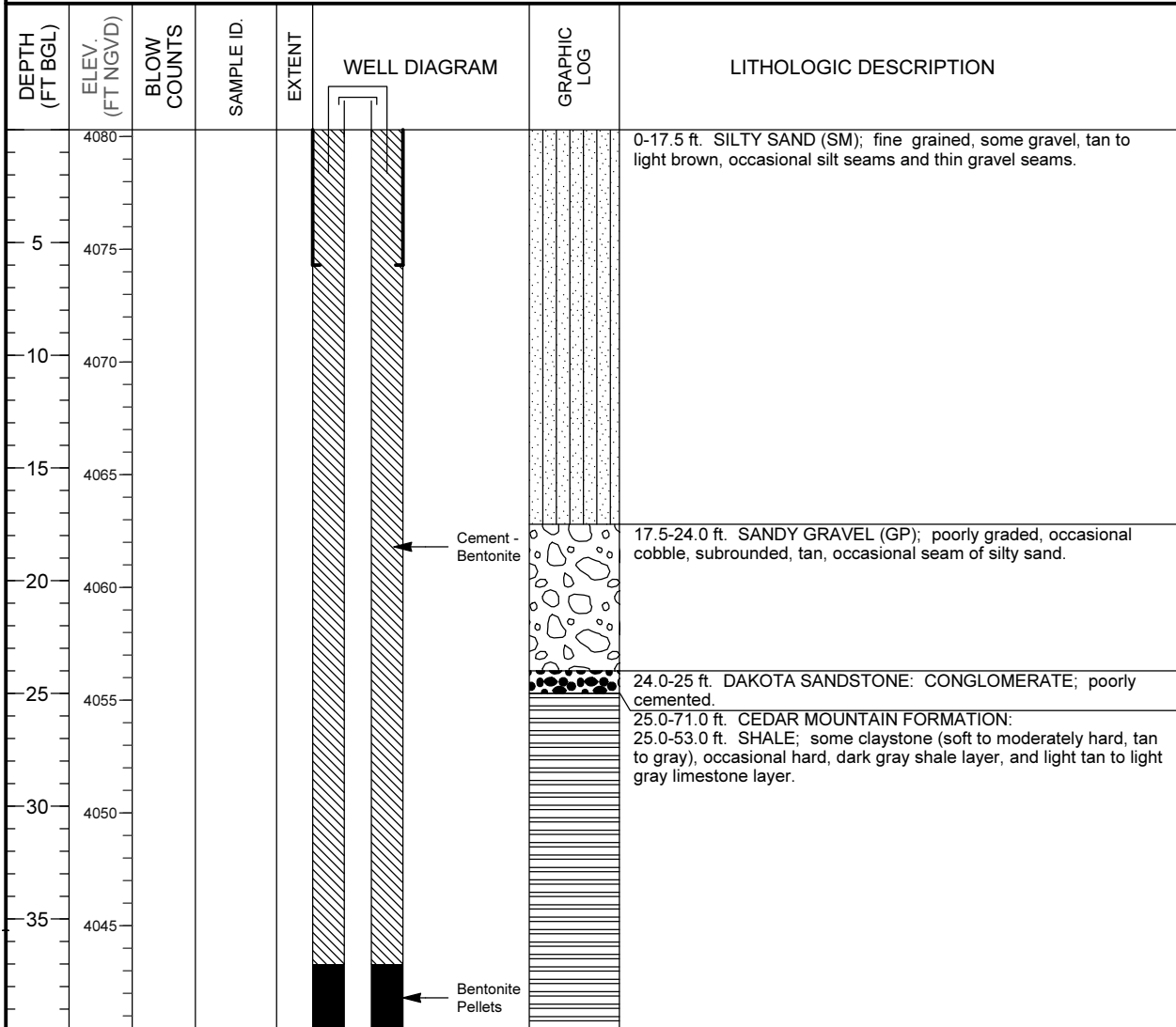


## MONITORING WELL COMPLETION LOG GRN01-0809

<b>PROJECT</b> <u>UMTRA GROUND WATER</u>	<b>NORTH COORD. (FT)</b> <u>238760.90</u>	<b>DATE DRILLED</b> <u>09/14/1987 to 09/15/1987</u>
<b>LOCATION</b> <u>GREEN RIVER, UT</u>	<b>EAST COORD. (FT)</b> <u>2387003.83</u>	<b>SURFACE ELEV. ( FT NGVD)</b> <u>4080.30</u>
<b>SITE</b> <u>GREEN RIVER</u>	<b>HOLE DEPTH (FT)</b> <u>71.00</u>	<b>TOP OF CASING (FT)</b> <u>4083.03</u>
<b>WELL NUMBER</b> <u>0809</u>	<b>WELL DEPTH (FT)</b> <u>69.60</u>	<b>MEAS. PT. ELEV. (FT)</b> <u>4083.03</u>

	<b>WELL INSTALLATION</b>	<b>INTERVAL (FT)</b>	
<b>SURFACE CASING:</b>	8 in. Steel	-2.2 to 6.0	
<b>BLANK CASING:</b>	4 in. PVC Sch 40	-2.73 to 47.8	<b>DRILLING METHOD</b> <u>ROTARY WITH BUTTON BIT</u>
<b>WELL SCREEN:</b>	4 in. Slotted PVC	47.8 to 67.8	<b>SAMPLING METHOD</b> _____
<b>SUMP/END CAP:</b>	4 in. PVC Sch 40	67.8 to 69.6	<b>DATE DEVELOPED</b> _____
<b>SURFACE SEAL:</b>			<b>WATER LEVEL (FT BTOC)</b> <u>53.0 on 09/15/1987</u>
<b>GROUT:</b>	Cement - Bentonite	0.0 to 37.0	<b>LOGGED BY</b> <u>Wood, W.</u>
<b>SEAL:</b>	Bentonite Pellets	37.0 to 40.0	<b>REMARKS</b> _____
<b>UPPER PACK:</b>			
<b>LOWER PACK:</b>	8-12 Silica Sand	40.0 to 70.0	



# MONITORING WELL COMPLETION LOG GRN01-0809

**PROJECT** UMTRA GROUND WATER                      **WELL NUMBER** 0809  
**SITE** GREEN RIVER    **DATES DRILLED** 09/14/1987 to 09/15/1987

*Continued from Previous Page*

DEPTH (FT BGL)	ELEV. (FT NGVD)	BLOW COUNTS	SAMPLE ID.	EXTENT	WELL DIAGRAM	GRAPHIC LOG	LITHOLOGIC DESCRIPTION
45	4035						
50	4030						
55	4025						53.0-56.0 ft. SANDSTONE; slightly weathered, hard, light gray.
60	4020						56.0-71.0 ft. SHALE; slightly weathered, soft to moderately hard, light gray and blue gray, occasional thin limestone seam.
70	4010						Total Depth 71.0 ft.
75	4005						
80	4000						
85	3995						
90	3990						