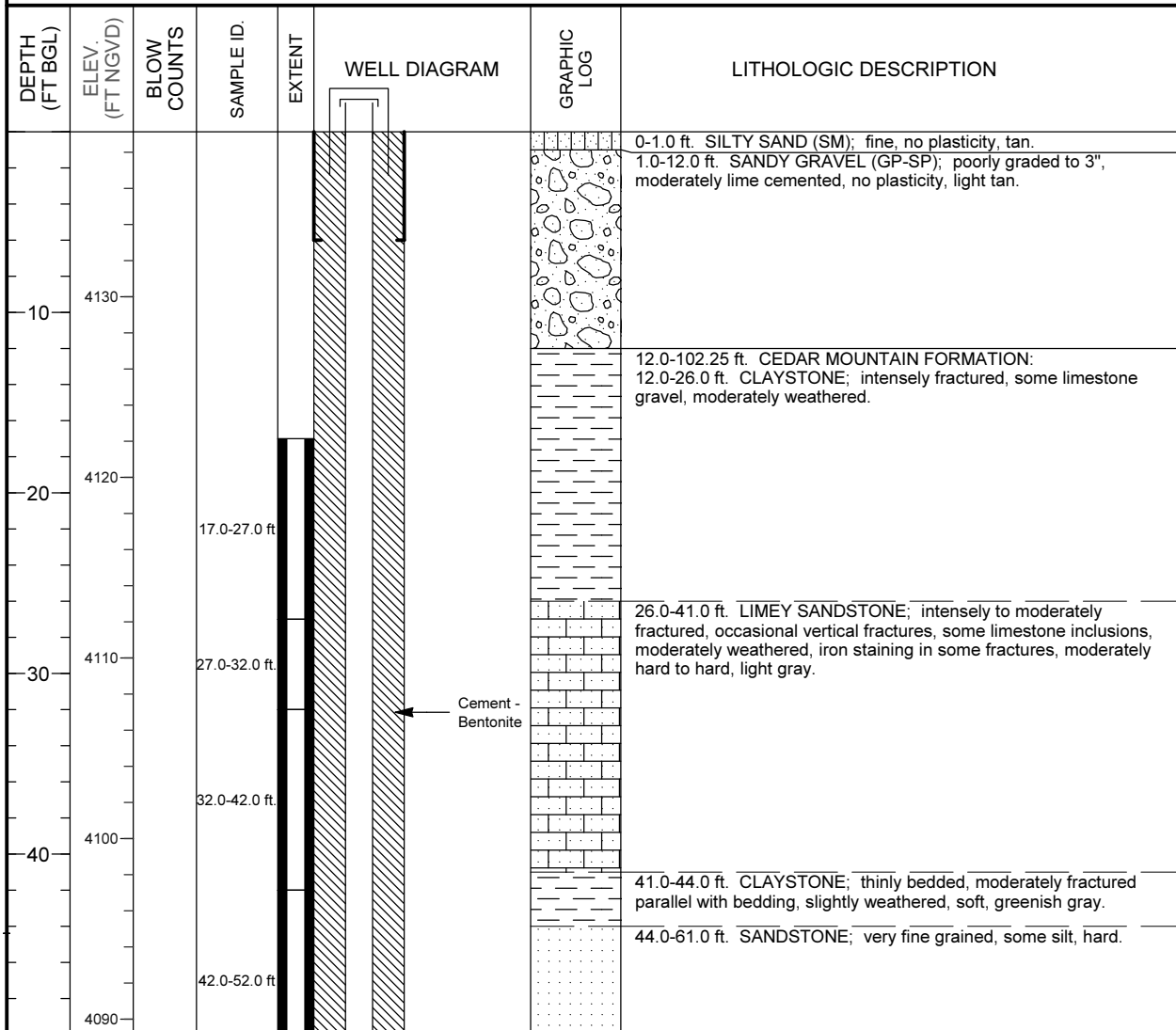


MONITORING WELL COMPLETION LOG GRN01-0807

PROJECT UMTRA GROUND WATER		NORTH COORD. (FT) 237543.24	DATE DRILLED 08/25/1987 to 09/14/1987
LOCATION GREEN RIVER, UT		EAST COORD. (FT) 2387138.35	SURFACE ELEV. (FT NGVD) 4139.14
SITE GREEN RIVER		HOLE DEPTH (FT) 102.25	TOP OF CASING (FT) 4141.03
WELL NUMBER 0807		WELL DEPTH (FT) 99.80	MEAS. PT. ELEV. (FT) 4141.03
			SLOT SIZE (IN) 0.050
			BIT SIZE(S) (IN) 10.0 / 7.88
WELL INSTALLATION		INTERVAL (FT)	DRILLING METHOD ROTARY WITH BUTTON BIT
SURFACE CASING:	8 in. Steel	-2.0 to 6.0	SAMPLING METHOD CORE
BLANK CASING:	4 in. PVC Sch 40	-1.89 to 78.0	DATE DEVELOPED
WELL SCREEN:	4 in. Slotted PVC	78.0 to 98.0	WATER LEVEL (FT BGS)
SUMP/END CAP:	4 in. PVC Sch 40	98.0 to 99.8	LOGGED BY Wood, W.
SURFACE SEAL:			REMARKS
GROUT:	Cement - Bentonite	0.0 to 64.3	
SEAL:	Bentonite Pellets	64.3 to 67.6	
UPPER PACK:			
LOWER PACK:	8-12 Silica Sand	67.6 to 100.0	



MONITORING WELL COMPLETION LOG GRN01-0807

PROJECT <u>UMTRA GROUND WATER</u>	WELL NUMBER <u>0807</u>
SITE <u>GREEN RIVER</u>	DATES DRILLED <u>08/25/1987 to 09/14/1987</u>

Continued from Previous Page

