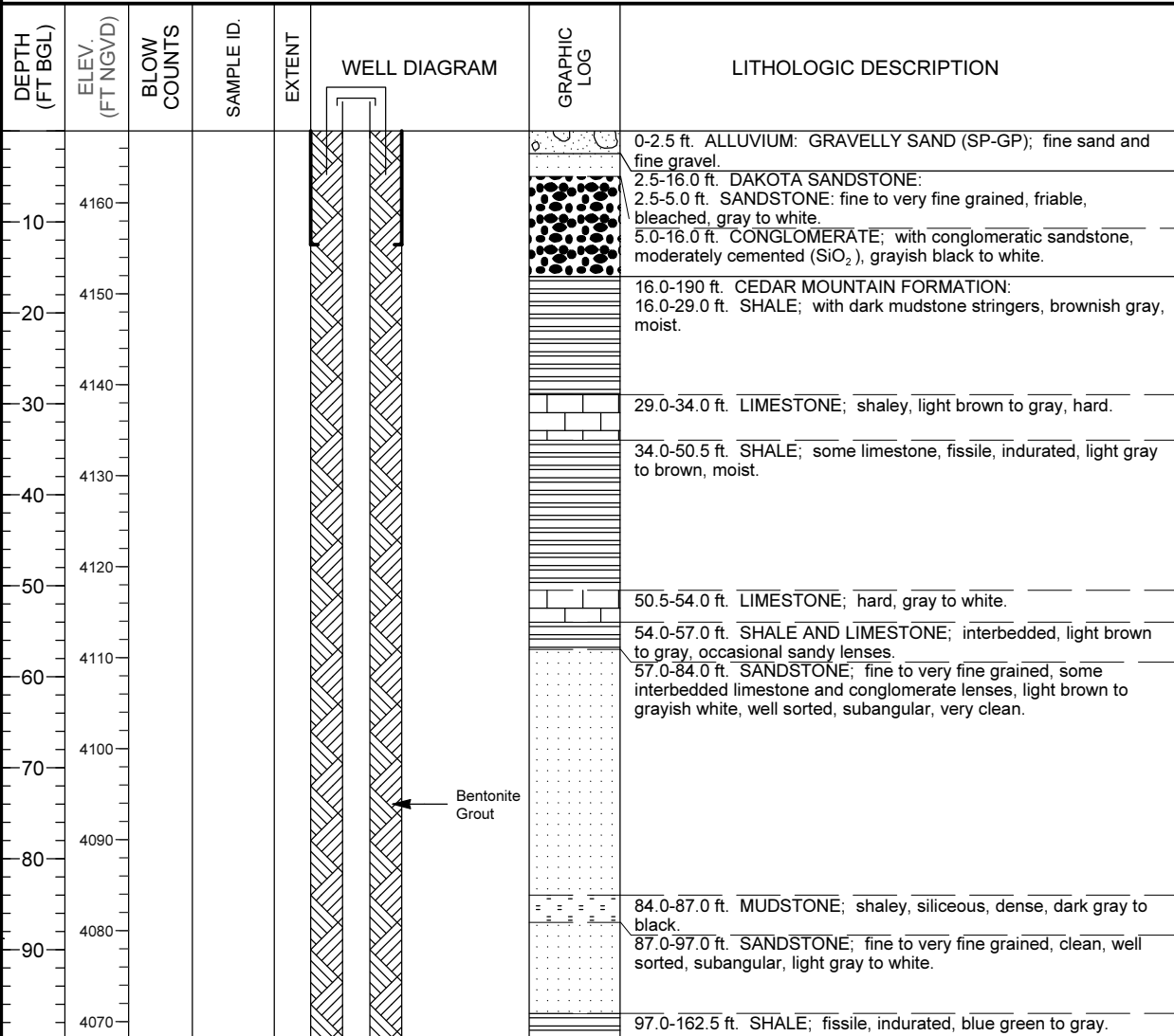


MONITORING WELL COMPLETION LOG GRN01-0587

PROJECT <u>UMTRA GROUND WATER</u>	NORTH COORD. (FT) <u>237554.43</u>	DATE DRILLED <u>08/23/1986 to 09/05/1986</u>
LOCATION <u>GREEN RIVER, UT</u>	EAST COORD. (FT) <u>2388010.25</u>	SURFACE ELEV. (FT NGVD) <u>4167.90</u>
SITE <u>GREEN RIVER</u>	HOLE DEPTH (FT) <u>190.00</u>	TOP OF CASING (FT) <u>4169.40</u>
WELL NUMBER <u>0587</u>	WELL DEPTH (FT) <u>185.00</u>	MEAS. PT. ELEV. (FT) <u>4169.40</u>

	WELL INSTALLATION	INTERVAL (FT)	
SURFACE CASING:	8.75 in. Steel	-1.5 to 12.5	
BLANK CASING:	4 in. PVC Sch 40	-1.5 to 163.0	
WELL SCREEN:	4 in. Slotted PVC	163.0 to 183.0	DRILLING METHOD <u>AIR ROTARY -- TRI-CONE BIT</u>
SUMP/END CAP:	4 in. PVC Sch 40	183.0 to 185.0	SAMPLING METHOD <u>AUGER CUTTINGS</u>
SURFACE SEAL:			DATE DEVELOPED <u>09/09/1986</u>
GROUT:	Cement - Bentonite	0.0 to 148.0	WATER LEVEL (FT BGS) _____
SEAL:	Bentonite Pellets	148.0 to 153.0	LOGGED BY <u>Phyfe, L.</u>
UPPER PACK:			REMARKS _____
LOWER PACK:	8-12 Silica Sand	153.0 to 185.0	_____



MONITORING WELL COMPLETION LOG GRN01-0587

PROJECT <u>UMTRA GROUND WATER</u>	WELL NUMBER <u>0587</u>
SITE <u>GREEN RIVER</u>	DATES DRILLED <u>08/23/1986 to 09/05/1986</u>

Continued from Previous Page

DEPTH (FT BGL)	ELEV. (FT NGVD)	BLOW COUNTS	SAMPLE ID.	EXTENT	WELL DIAGRAM	GRAPHIC LOG	LITHOLOGIC DESCRIPTION
110 120 130 140 150 160 170 180 190 200 210 220	4060 4050 4040 4030 4020 4010 4000 3990 3980 3970 3960 3950				<p style="font-size: small;"> Bentonite Pellets 8-12 Silica Sand PVC Sch 40 0.050" Slotted PVC Slough </p>		<p>129.0-137.0 ft. high plasticity clay-shale interbeds, light brown to gray.</p> <p>@ 155.0 ft. color changes to purple-brown, indurated; occasional gray, clayey, interbeds.</p> <p>162.5-190.0 ft. SANDSTONE; fine to very fine grained, well sorted, clean, light blue to gray.</p> <p style="text-align: center;">Total Depth 190.0 ft.</p>