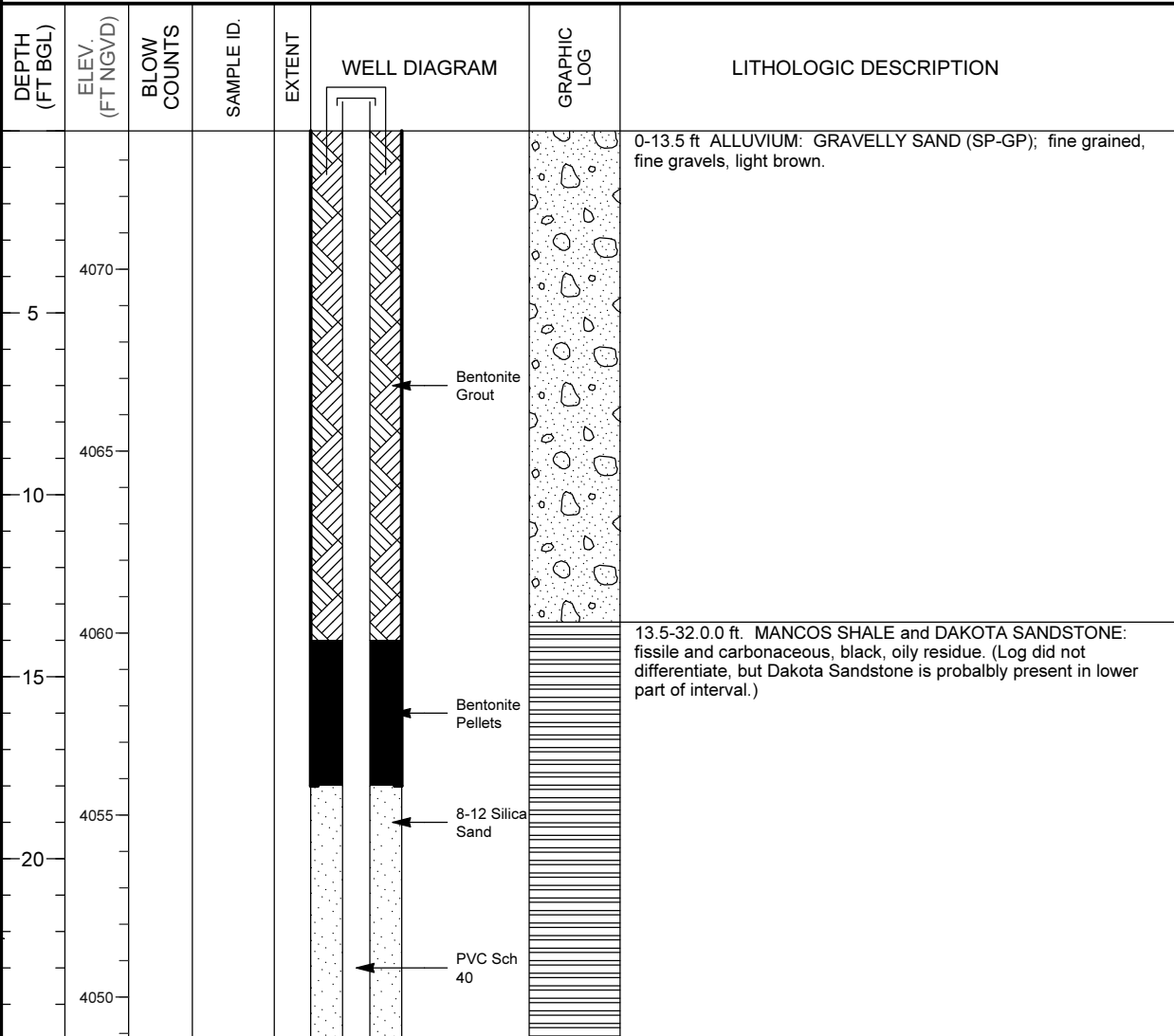


## MONITORING WELL COMPLETION LOG GRN01-0584

PROJECT <u>UMTRA GROUND WATER</u>	NORTH COORD. (FT) <u>239046.93</u>	DATE DRILLED <u>08/29/1986 to 09/08/1986</u>
LOCATION <u>GREEN RIVER, UT</u>	EAST COORD. (FT) <u>2386726.17</u>	SURFACE ELEV. ( FT NGVD) <u>4073.80</u>
SITE <u>GREEN RIVER</u>	HOLE DEPTH (FT) <u>50.00</u>	TOP OF CASING (FT) <u>4075.34</u>
WELL NUMBER <u>0584</u>	WELL DEPTH (FT) <u>50.00</u>	MEAS. PT. ELEV. (FT) <u>4075.34</u>

	<b>WELL INSTALLATION</b>	<b>INTERVAL (FT)</b>	
<b>SURFACE CASING:</b>	6.5 in. Steel	-1.5 to 18.0	<b>DRILLING METHOD</b> <u>AIR ROTARY -- TRI-CONE BIT</u>
<b>BLANK CASING:</b>	2 in. PVC Sch 40	-1.54 to 28.0	<b>SAMPLING METHOD</b> <u>AUGER CUTTINGS</u>
<b>WELL SCREEN:</b>	2 in. Slotted PVC	28.0 to 48.0	<b>DATE DEVELOPED</b> <u>09/09/1986</u>
<b>SUMP/END CAP:</b>	2 in. PVC Sch 40	48.0 to 50.0	<b>WATER LEVEL (FT BGS)</b> _____
<b>SURFACE SEAL:</b>			<b>LOGGED BY</b> <u>Phyfe, L.</u>
<b>GROUT:</b>	Cement - Bentonite	0.0 to 14.0	<b>REMARKS</b> _____
<b>SEAL:</b>	Bentonite Pellets	14.0 to 18.0	
<b>UPPER PACK:</b>			
<b>LOWER PACK:</b>	8-12 Silica Sand	18.0 to 50.0	



# MONITORING WELL COMPLETION LOG GRN01-0584

**PROJECT** UMTRA GROUND WATER                      **WELL NUMBER** 0584  
**SITE** GREEN RIVER    **DATES DRILLED** 08/29/1986 to 09/08/1986

*Continued from Previous Page*

DEPTH (FT BGL)	ELEV. (FT NGVD)	BLOW COUNTS	SAMPLE ID.	EXTENT	WELL DIAGRAM	GRAPHIC LOG	LITHOLOGIC DESCRIPTION
30	4045				<p style="text-align: center;">0.050" Slotted PVC</p>		<p>32.0-50.0 ft. CEDAR MOUNTAIN FORMATION: LIMESTONE; shaley, light gray to blue green.</p>
35	4040						
40	4035						
45	4030						
50	4025						
55	4020						<p>Total Depth 50.0 ft.</p>