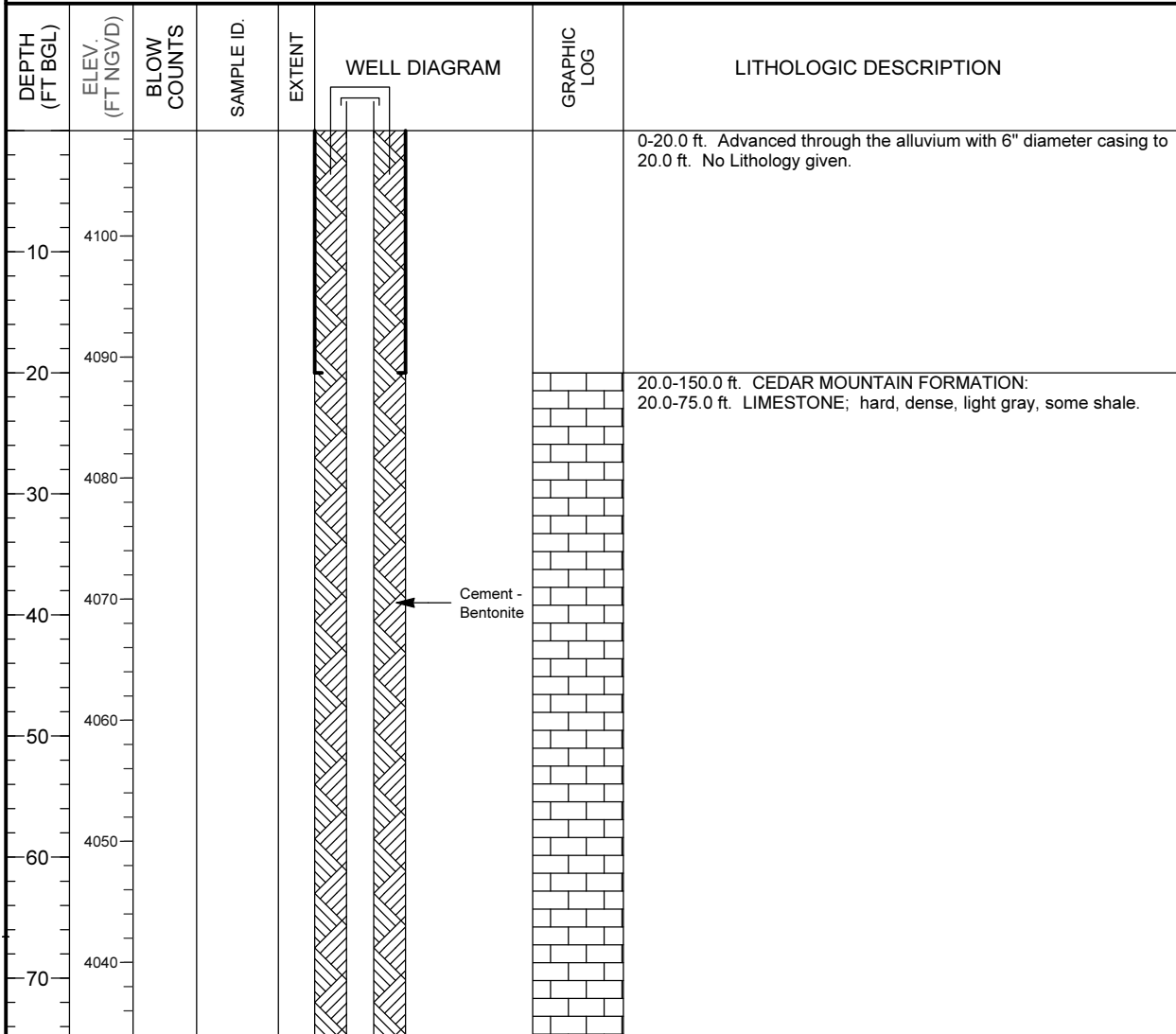


MONITORING WELL COMPLETION LOG GRN01-0561

| | | |
|-----------------------------------|------------------------------------|--|
| PROJECT <u>UMTRA GROUND WATER</u> | NORTH COORD. (FT) <u>238234.61</u> | DATE DRILLED <u>04/22/1986 to 04/25/1986</u> |
| LOCATION <u>GREEN RIVER, UT</u> | EAST COORD. (FT) <u>2386506.87</u> | SURFACE ELEV. (FT NGVD) <u>4108.70</u> |
| SITE <u>GREEN RIVER</u> | HOLE DEPTH (FT) <u>150.00</u> | TOP OF CASING (FT) <u>4111.20</u> |
| WELL NUMBER <u>0561</u> | WELL DEPTH (FT) <u>143.50</u> | MEAS. PT. ELEV. (FT) <u>4111.20</u> |

| | | | |
|------------------------|--------------------------|----------------------|--|
| | WELL INSTALLATION | INTERVAL (FT) | |
| SURFACE CASING: | 6 in. Steel | -2.5 to 20.0 | |
| BLANK CASING: | 2 in. PVC Sch 40 | -2.5 to 108.5 | DRILLING METHOD <u>AIR ROTARY -- TRI-CONE BIT</u> |
| WELL SCREEN: | 2 in. Slotted PVC | 108.5 to 138.5 | SAMPLING METHOD _____ |
| SUMP/END CAP: | 2 in. PVC Sch 40 | 138.5 to 143.5 | DATE DEVELOPED <u>04/27/1986</u> |
| SURFACE SEAL: | | | WATER LEVEL (FT BGS) _____ |
| GROUT: | Cement - Bentonite | 0.0 to 78.0 | LOGGED BY <u>Phyfe, L.</u> |
| SEAL: | Bentonite Pellets | 78.0 to 82.0 | REMARKS _____ |
| UPPER PACK: | | | |
| LOWER PACK: | 8-12 Silica Sand | 82.0 to 143.5 | |



MONITORING WELL COMPLETION LOG GRN01-0561

| | |
|--|--|
| PROJECT <u>UMTRA GROUND WATER</u> | WELL NUMBER <u>0561</u> |
| SITE <u>GREEN RIVER</u> | DATES DRILLED <u>04/22/1986 to 04/25/1986</u> |

Continued from Previous Page

