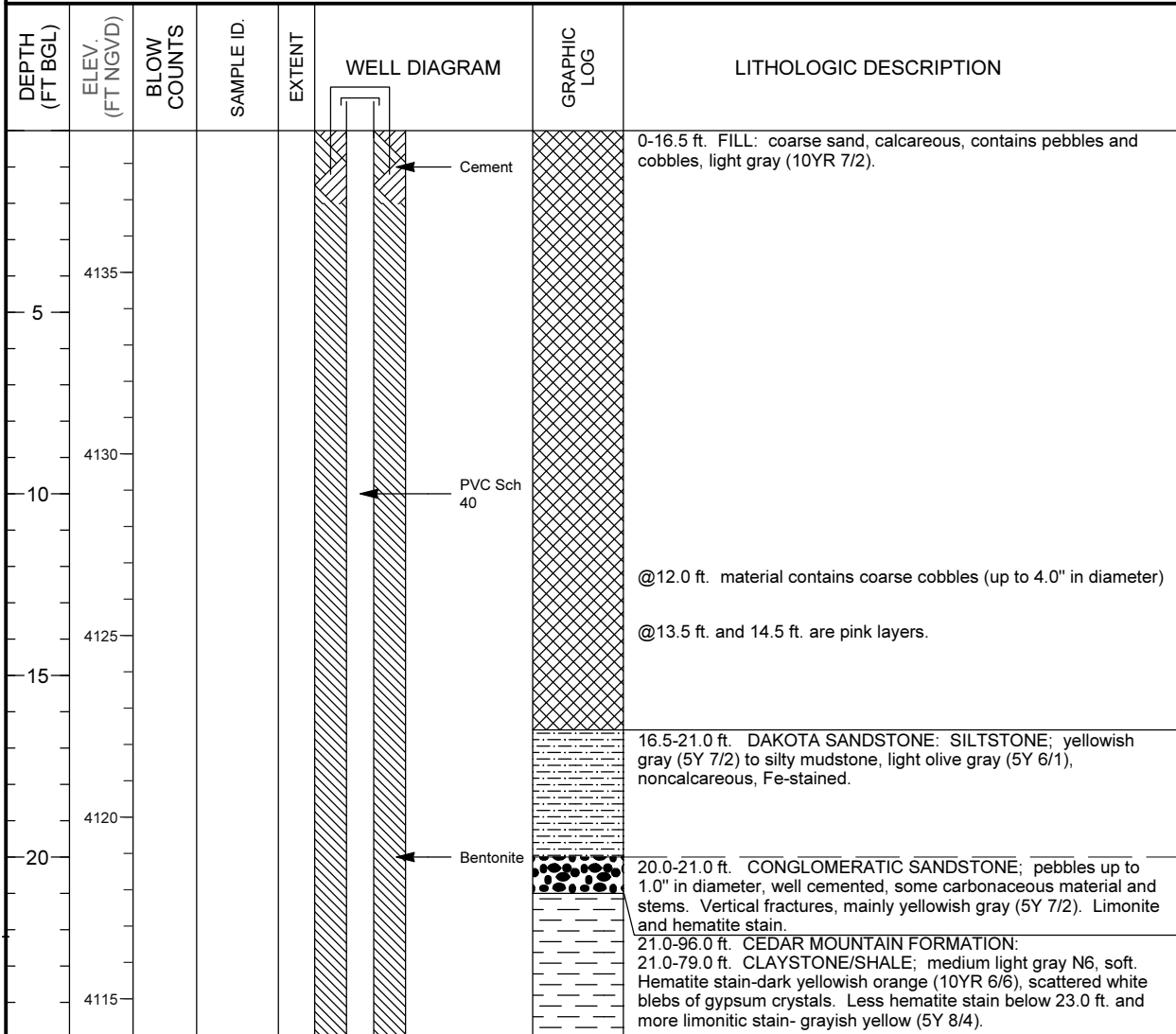


MONITORING WELL COMPLETION LOG GRN01-0181

PROJECT <u>UMTRA GROUND WATER</u>	NORTH COORD. (FT) <u>238075.43</u>	DATE DRILLED <u>06/13/2002 to 06/19/2002</u>
LOCATION <u>GREEN RIVER, UT</u>	EAST COORD. (FT) <u>2387359.16</u>	SURFACE ELEV. (FT NGVD) <u>4138.90</u>
SITE <u>GREEN RIVER</u>	HOLE DEPTH (FT) <u>96.00</u>	TOP OF CASING (FT) <u>4141.10</u>
WELL NUMBER <u>0181</u>	WELL DEPTH (FT) <u>92.00</u>	MEAS. PT. ELEV. (FT) <u>4141.10</u>

	WELL INSTALLATION	INTERVAL (FT)	
SURFACE CASING:			
BLANK CASING:	4 in. PVC Sch 40	-2.2 to 77.0	DRILLING METHOD <u>ROTASONIC</u>
WELL SCREEN:	4 in. 0.02 Slotted PVC	77.0 to 92.0	SAMPLING METHOD <u>ROTASONIC CORE</u>
SUMP/END CAP:			DATE DEVELOPED <u>06/20/2002</u>
SURFACE SEAL:	Cement	0.0 to 2.0	WATER LEVEL (FT BTOC) <u>60.0 on 06/20/2002</u>
GROUT:	Bentonite	2.0 to 69.0	LOGGED BY <u>Goodknight, C.</u>
SEAL:	Bentonite Pellets	69.0 to 74.0	REMARKS <u>Centralizers at 92.0 ft. and 40.0 ft.</u>
UPPER PACK:	20-40 Silica Sand	74.0 to 75.0	
LOWER PACK:	10-20 Silica Sand	75.0 to 92.0	



MONITORING WELL COMPLETION LOG GRN01-0181

PROJECT UMTRA GROUND WATER **WELL NUMBER** 0181
SITE GREEN RIVER **DATES DRILLED** 06/13/2002 to 06/19/2002

Continued from Previous Page

DEPTH (FT BGL)	ELEV. (FT NGVD)	BLOW COUNTS	SAMPLE ID.	EXTENT	WELL DIAGRAM	GRAPHIC LOG	LITHOLOGIC DESCRIPTION
30	4110						27.0-30.0 ft. thin limonitic siltstone beds scattered through shale/claystone, noncalcareous. Beds are mostly siltstone, yellowish gray (5Y 7/2).
							@31.0 layer of gray concretions with pyrite blebs.
35	4105						32.5-41.0 ft. mainly greenish gray (5G 6/1) claystone and shale, noncalcareous to calcareous, trace of pyrite blebs in more resistant thin beds from 35.0 to 38.0 ft., and trace of gypsum and limonite.
40	4100						39-41.0 ft. becoming more sandy.
							41.0-42.0 ft. hard siliceous nodules, fractured, with limonitic stain, trace calcite.
							42.0-45.0 ft. mostly greenish gray shale and claystone (5G 6/1).
45	4095						45.0-47.0 ft. calcareous nodules, trace of pyrite blebs @ 45.0 ft. Calcareous siltstone layer with trace of small pyrite blebs, light gray (N7) to medium light gray (N6).
							47.0-50.0 ft. mostly shale and claystone, dark greenish gray (5GY 4/1).
50	4090						50.0-51.0 ft. Layer of calcareous siltstone nodules, light gray (N7).
							51.0-53.0 ft. sandy layer (poor recovery), mostly coarse grained sand, some limonite.
							53.0-54.0 ft. hard medium bluish gray (5B 5/1) layer of shale.
55	4085						54.0-58.0 ft. mostly shale/claystone, soft, dark greenish gray (5GY 4/1), slightly calcareous.

MONITORING WELL COMPLETION LOG GRN01-0181

PROJECT UMTRA GROUND WATER **WELL NUMBER** 0181
SITE GREEN RIVER **DATES DRILLED** 06/13/2002 to 06/19/2002

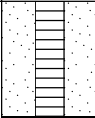
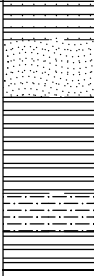

Continued from Previous Page

DEPTH (FT BGL)	ELEV. (FT NGVD)	BLOW COUNTS	SAMPLE ID.	EXTENT	WELL DIAGRAM	GRAPHIC LOG	LITHOLOGIC DESCRIPTION
60	4080						58.0-59.0 ft. layer of calcareous nodules, greenish gray (5G 6/1). 59.0-60 ft. hard calcareous layer, greenish gray (5G 6/1), with some pyrite blebs. 60.0-62.0 ft. calcareous shale, moderately soft, medium gray (N5).
65	4075			62.0-69.0 ft. alternating beds of calcareous siltstone, trace of pyrite, light gray (N7), and gray shale/claystone.			
70	4070			65.0-67.0 ft. hard calcareous siltstone, light gray (N7) to medium light gray (N6), trace of pyrite, nodular appearance. 67.0-69.0 ft. soft gray shale.			
75	4065			69.0-79.0 ft. hard light gray (N7), siltstone, little to no porosity, pyrite along fractures, some near-vertical healed fractures. Some horizontal fracturing @75.0 ft. and fracturing/porosity along crossbeds.			
80	4060			79.0-91.5 ft. SANDSTONE; gradual coarsening from siltstone to fine grained sandstone from 79.0-81.0 ft., calcareous, finely disseminated pyrite, light gray (N7).			
85	4055			87.0-87.5 ft. some crossbedding and coarsening at base to coarse grained sandstone and conglomerate (up to 1/2" diameter clasts). 87.5-90.0 ft. SHALE and SILTSTONE; calcareous, medium light			

MONITORING WELL COMPLETION LOG GRN01-0181

PROJECT UMTRA GROUND WATER **WELL NUMBER** 0181
SITE GREEN RIVER **DATES DRILLED** 06/13/2002 to 06/19/2002

Continued from Previous Page

DEPTH (FT BGL)	ELEV. (FT NGVD)	BLOW COUNTS	SAMPLE ID.	EXTENT	WELL DIAGRAM	GRAPHIC LOG	LITHOLOGIC DESCRIPTION
-90							gray (N6).
							90.0-91.5 ft. medium to coarse grained sandstone, crossbedded, calcareous, greenish clay clasts (up to 1.0").
							91.5-94.0 ft. SHALE; greenish gray (5G 6/1), and claystone, slightly calcareous.
	4045						94.0-95.0 ft. SILTSTONE; nodular, limey, medium light gray (N6), slight moderate calcareous, trace of pyrite.
-95							95.0-96.0 ft. SHALE and CLAYSTONE; slightly calcareous, medium gray (N5).
							Total Depth 96.0 ft.
	4040						
-100							
	4035						
-105							
	4030						
-110							
	4025						
-115							
	4020						
-120							