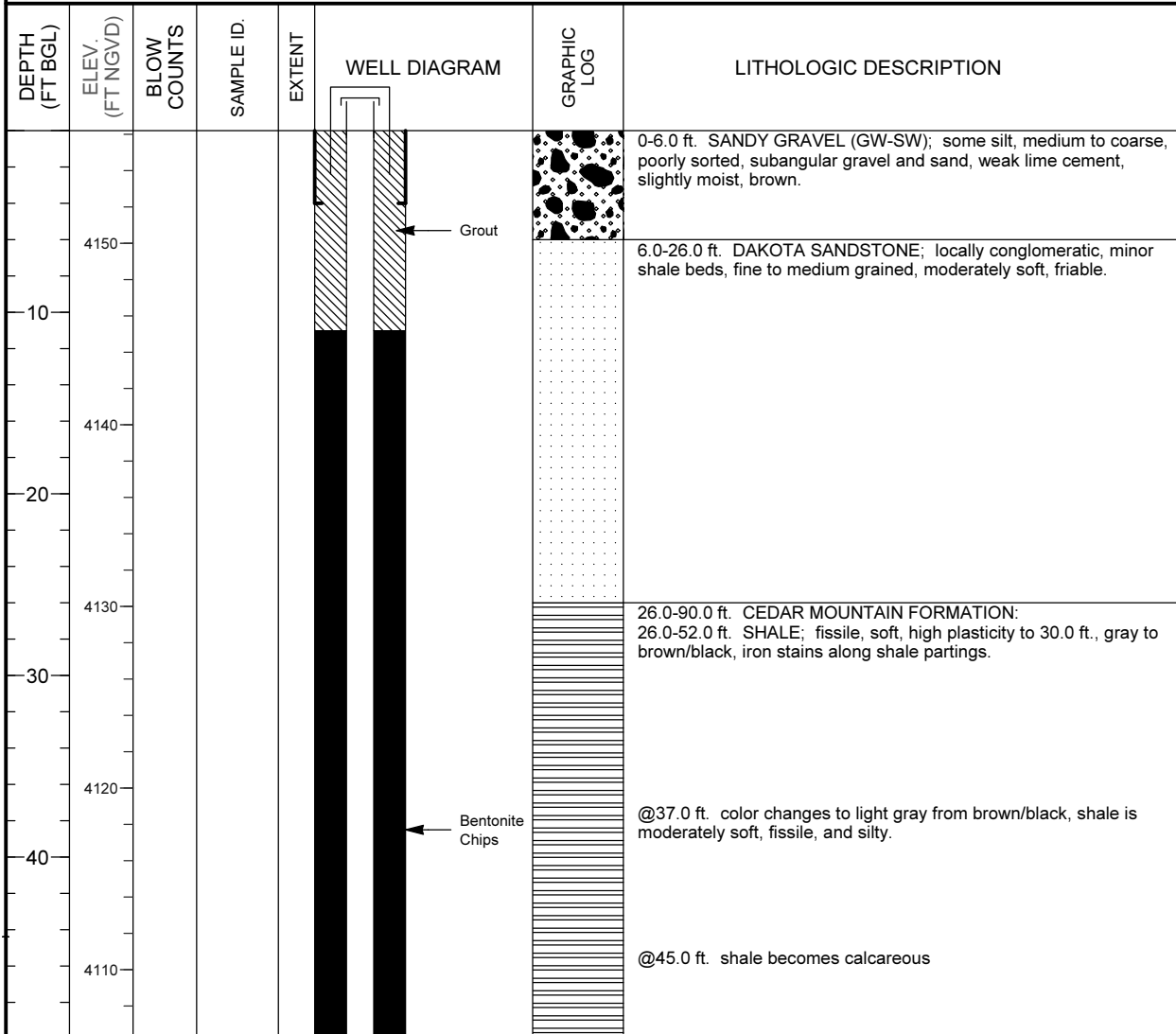


MONITORING WELL COMPLETION LOG GRN01-0180

PROJECT <u>UMTRA GROUND WATER</u>		NORTH COORD. (FT) <u>237809.90</u>	DATE DRILLED <u>07/11/1990</u>
LOCATION <u>GREEN RIVER, UT</u>		EAST COORD. (FT) <u>2388277.74</u>	SURFACE ELEV. (FT NGVD) <u>4156.20</u>
SITE <u>GREEN RIVER</u>		HOLE DEPTH (FT) <u>90.00</u>	TOP OF CASING (FT) <u>4159.11</u>
WELL NUMBER <u>0180</u>		WELL DEPTH (FT) <u>90.00</u>	MEAS. PT. ELEV. (FT) <u>4159.11</u>
			SLOT SIZE (IN) <u>0.050</u>
			BIT SIZE(S) (IN) <u>8.75 / 7.88</u>
WELL INSTALLATION		INTERVAL (FT)	DRILLING METHOD <u>ROTARY WITH BUTTON BIT</u>
SURFACE CASING:	8 in. Steel	-2.0 to 4.0	SAMPLING METHOD _____
BLANK CASING:	4 in. PVC Sch 40	-2.91 to 78.0	DATE DEVELOPED <u>07/13/1990</u>
WELL SCREEN:	4 in. Slotted PVC	78.0 to 88.0	WATER LEVEL (FT BTOC) <u>58.2 on 07/13/1990</u>
SUMP/END CAP:	4 in. PVC Sch 40	88.0 to 90.0	LOGGED BY <u>Papusch, R.</u>
SURFACE SEAL:			REMARKS _____
GROUT:	Bentonite	0.0 to 11.0	
SEAL:	Bentonite Chips	11.0 to 66.0	
UPPER PACK:			
LOWER PACK:	8-12 Silica Sand	66.0 to 90.0	



MONITORING WELL COMPLETION LOG GRN01-0180

PROJECT UMTRA GROUND WATER **WELL NUMBER** 0180
SITE GREEN RIVER **DATES DRILLED** 07/11/1990

Continued from Previous Page

DEPTH (FT BGL)	ELEV. (FT NGVD)	BLOW COUNTS	SAMPLE ID.	EXTENT	WELL DIAGRAM	GRAPHIC LOG	LITHOLOGIC DESCRIPTION
4100							52.0-61.0 ft. Limestone (LS); moderately hard, massive, interbedded with shale (fissile, moderately hard, light gray, calcareous).
60							61.0-77.0 ft. SILTSTONE; calcareous, moderately hard, light gray, interbedded with shale (fissile, moderately hard, light gray).
4090							77.0-85.0 ft. SANDSTONE; fine grained, moderately hard, calcareous, light gray, interbedded with siltstone (moderately hard, calcareous, light gray).
70							85.0-89.0 ft. SANDSTONE; fine to medium grained, locally conglomeratic, moderately hard, light gray, calcareous. Water at 85.0 ft.
4080							89.0-90.0 ft. SHALE; fissile, soft, green.
80							Total Depth 90.0 ft.
4070							
90							
4060							
100							
4050							
110							