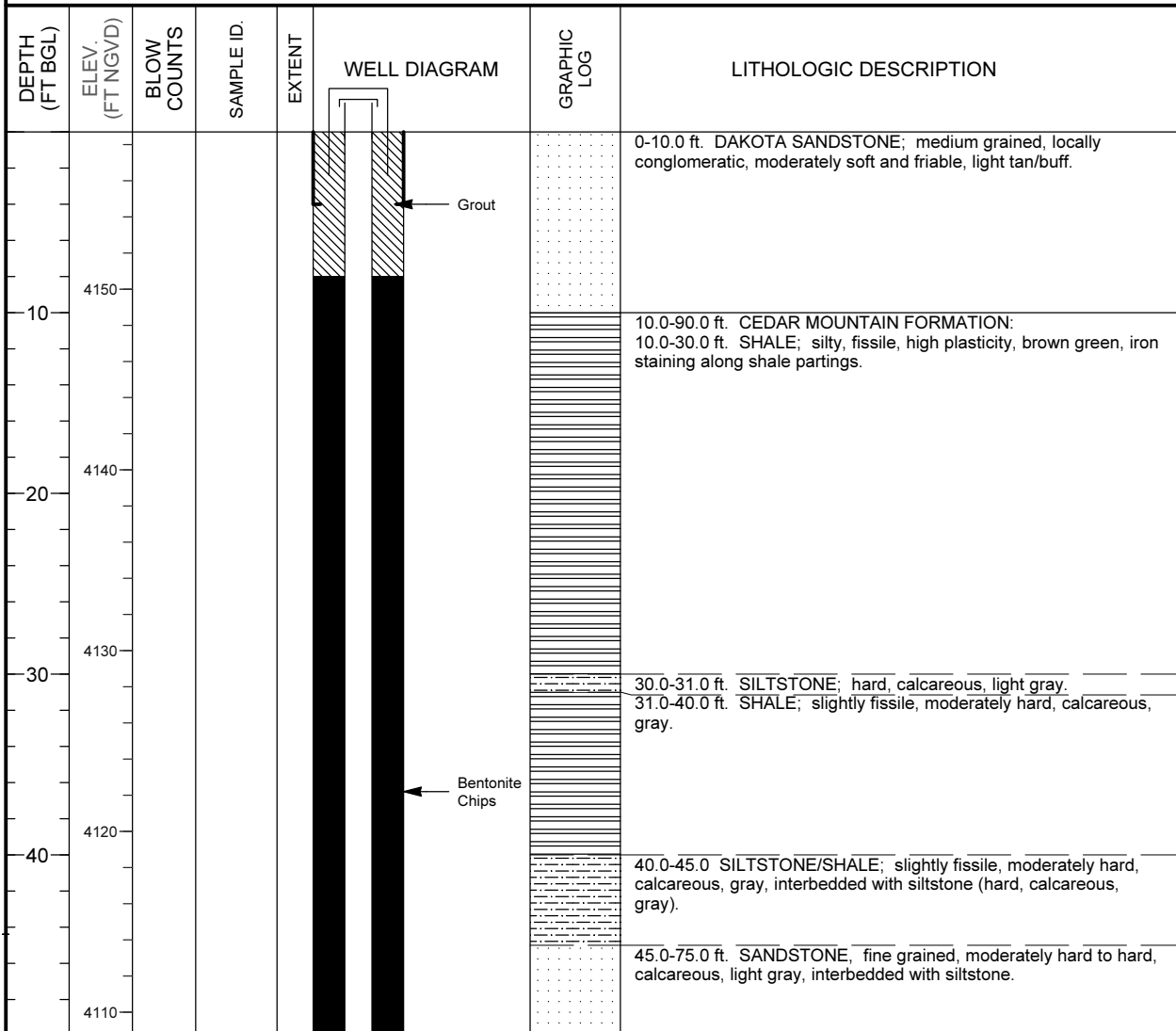


MONITORING WELL COMPLETION LOG GRN01-0179

PROJECT <u>UMTRA GROUND WATER</u>		NORTH COORD. (FT) <u>237541.30</u>	DATE DRILLED <u>07/10/1990</u>
LOCATION <u>GREEN RIVER, UT</u>		EAST COORD. (FT) <u>2387895.92</u>	SURFACE ELEV. (FT NGVD) <u>4158.70</u>
SITE <u>GREEN RIVER</u>		HOLE DEPTH (FT) <u>90.00</u>	TOP OF CASING (FT) <u>4161.39</u>
WELL NUMBER <u>0179</u>		WELL DEPTH (FT) <u>90.00</u>	MEAS. PT. ELEV. (FT) <u>4161.39</u>
			SLOT SIZE (IN) <u>0.050</u>
			BIT SIZE(S) (IN) <u>8.75 / 7.88</u>
WELL INSTALLATION		INTERVAL (FT)	DRILLING METHOD <u>ROTARY WITH BUTTON BIT</u>
SURFACE CASING: 8 in. Steel		-2.0 to 4.0	SAMPLING METHOD _____
BLANK CASING: 4 in. PVC Sch 40		-2.69 to 78.0	DATE DEVELOPED <u>07/13/1990</u>
WELL SCREEN: 4 in. Slotted PVC		78.0 to 88.0	WATER LEVEL (FT BTOC) <u>77.5 on 07/13/1990</u>
SUMP/END CAP: 4 in. PVC Sch 40		88.0 to 90.0	LOGGED BY <u>Papusch, R.</u>
SURFACE SEAL:			REMARKS _____
GROUT: Bentonite		0.0 to 8.0	
SEAL: Bentonite Chips		8.0 to 65.0	
UPPER PACK:			
LOWER PACK: 8-12 Silica Sand		65.0 to 90.0	



MONITORING WELL COMPLETION LOG GRN01-0179

PROJECT UMTRA GROUND WATER **WELL NUMBER** 0179
SITE GREEN RIVER **DATES DRILLED** 07/10/1990

Continued from Previous Page

DEPTH (FT BGL)	ELEV. (FT NGVD)	BLOW COUNTS	SAMPLE ID.	EXTENT	WELL DIAGRAM	GRAPHIC LOG	LITHOLOGIC DESCRIPTION
60	4100						
70	4090						
80	4080						75.0-85.0 ft. SANDSTONE; fine grained, moderately hard, gray to light brown, calcareous, water at 80.0 ft.
90	4070						87.0-90.0 ft. SHALE; fissile, moderately soft to hard, calcareous, gray to green.
							Total Depth 90.0 ft.
100	4060						
110	4050						