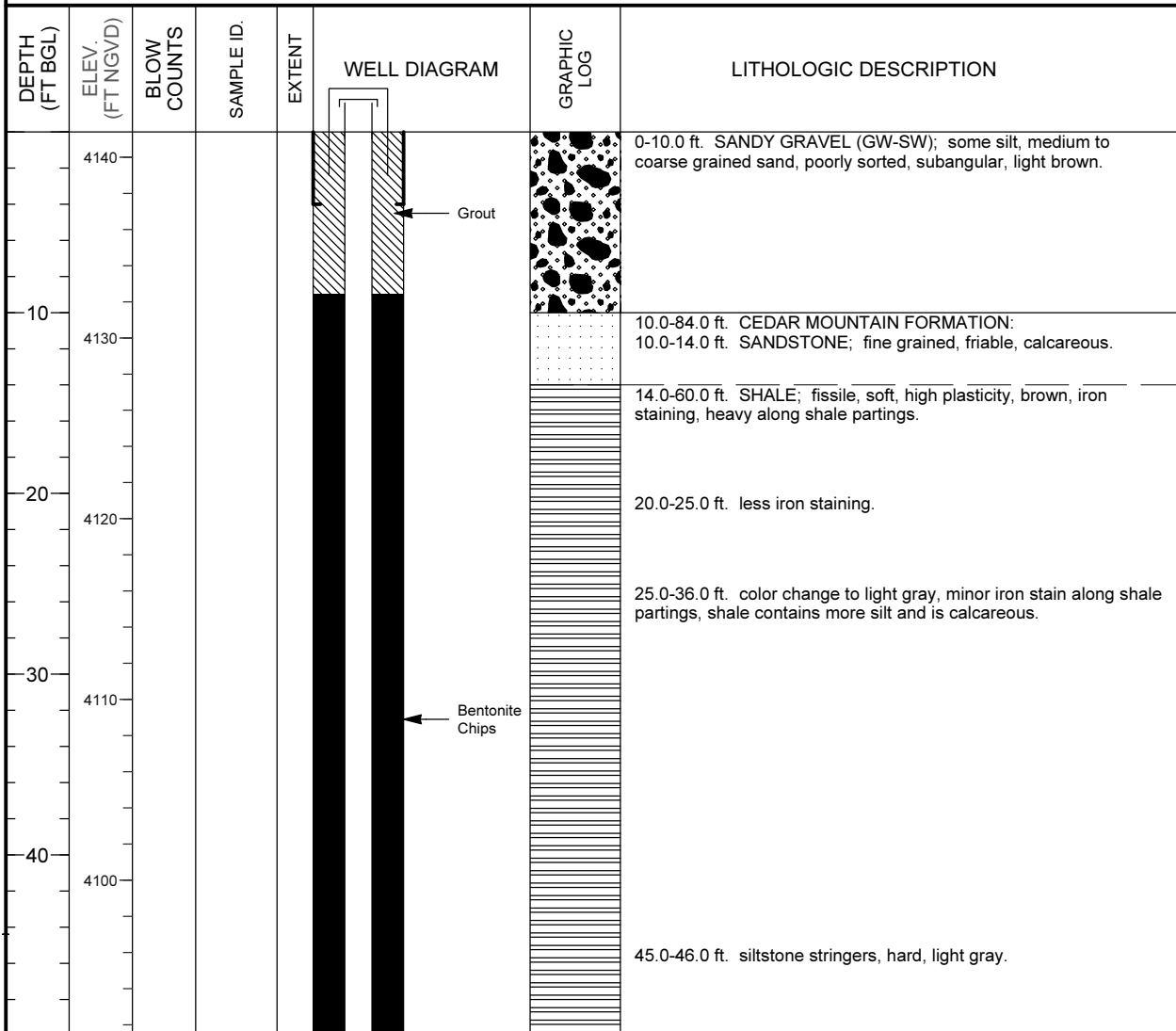


MONITORING WELL COMPLETION LOG GRN01-0176

PROJECT <u>UMTRA GROUND WATER</u>		NORTH COORD. (FT) <u>237870.77</u>	DATE DRILLED <u>07/08/1990 to 07/09/1990</u>
LOCATION <u>GREEN RIVER, UT</u>		EAST COORD. (FT) <u>2387871.15</u>	SURFACE ELEV. (FT NGVD) <u>4141.40</u>
SITE <u>GREEN RIVER</u>		HOLE DEPTH (FT) <u>84.00</u>	TOP OF CASING (FT) <u>4143.40</u>
WELL NUMBER <u>0176</u>		WELL DEPTH (FT) <u>84.00</u>	MEAS. PT. ELEV. (FT) <u>4143.40</u>
		SLOT SIZE (IN) <u>0.050</u>	BIT SIZE(S) (IN) <u>8.75 / 7.88</u>
WELL INSTALLATION		INTERVAL (FT)	DRILLING METHOD <u>ROTARY WITH BUTTON BIT</u>
SURFACE CASING:	8 in. Steel	-2.0 to 4.0	SAMPLING METHOD _____
BLANK CASING:	4 in. PVC Sch 40	-2.0 to 72.0	DATE DEVELOPED <u>07/12/1990</u>
WELL SCREEN:	4 in. Slotted PVC	72.0 to 82.0	WATER LEVEL (FT BTOC) <u>59.03 on 07/12/1990</u>
SUMP/END CAP:	4 in. PVC Sch 40	82.0 to 84.0	LOGGED BY <u>Papusch, R.</u>
SURFACE SEAL:			REMARKS _____
GROUT:	Bentonite	0.0 to 9.0	
SEAL:	Bentonite Chips	9.0 to 56.0	
UPPER PACK:			
LOWER PACK:	8-12 Silica Sand	56.0 to 84.0	



MONITORING WELL COMPLETION LOG GRN01-0176

PROJECT <u>UMTRA GROUND WATER</u>	WELL NUMBER <u>0176</u>
SITE <u>GREEN RIVER</u>	DATES DRILLED <u>07/08/1990 to 07/09/1990</u>

Continued from Previous Page

DEPTH (FT BGL)	ELEV. (FT NGVD)	BLOW COUNTS	SAMPLE ID.	EXTENT	WELL DIAGRAM	GRAPHIC LOG	LITHOLOGIC DESCRIPTION
4090							
60 4080							60.0-81.0 ft. SANDSTONE; fine to medium grained, medium soft to moderately hard, calcareous, brown, petroleum odor.
70 4070							
80 4060							81.0-84.0 ft. SHALE; some silt, fissile, soft, green.
							Total Depth 84.0 ft.
90 4050							
100 4040							
110 4030							