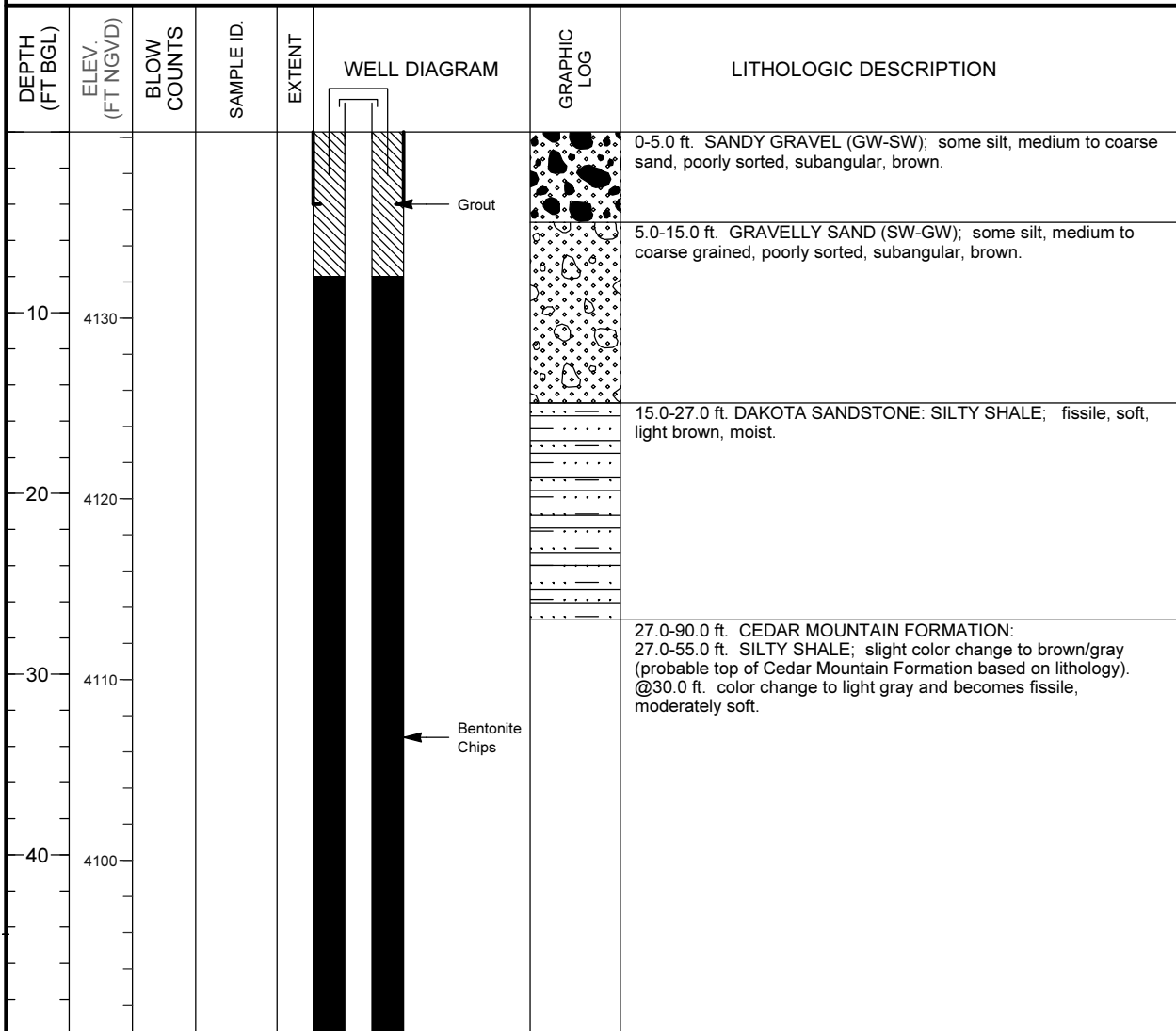


## MONITORING WELL COMPLETION LOG GRN01-0175

<b>PROJECT</b> <u>UMTRA GROUND WATER</u>		<b>NORTH COORD. (FT)</b> <u>238018.89</u>	<b>DATE DRILLED</b> <u>07/07/1990 to 07/09/1990</u>
<b>LOCATION</b> <u>GREEN RIVER, UT</u>		<b>EAST COORD. (FT)</b> <u>2387722.87</u>	<b>SURFACE ELEV. ( FT NGVD)</b> <u>4140.30</u>
<b>SITE</b> <u>GREEN RIVER</u>		<b>HOLE DEPTH (FT)</b> <u>90.00</u>	<b>TOP OF CASING (FT)</b> <u>4142.86</u>
<b>WELL NUMBER</b> <u>0175</u>		<b>WELL DEPTH (FT)</b> <u>90.00</u>	<b>MEAS. PT. ELEV. (FT)</b> <u>4142.86</u>
		<b>SLOT SIZE (IN)</b> <u>0.050</u>	<b>BIT SIZE(S) (IN)</b> <u>8.75 / 7.88</u>
<b>WELL INSTALLATION</b>		<b>INTERVAL (FT)</b>	<b>DRILLING METHOD</b> <u>ROTARY WITH BUTTON BIT</u>
<b>SURFACE CASING:</b>	8 in. Steel	-2.0 to 4.0	<b>SAMPLING METHOD</b> _____
<b>BLANK CASING:</b>	4 in. PVC Sch 40	-2.56 to 78.0	<b>DATE DEVELOPED</b> <u>07/12/1990</u>
<b>WELL SCREEN:</b>	4 in. Slotted PVC	78.0 to 88.0	<b>WATER LEVEL (FT BTOC)</b> <u>59.3 on 07/12/1990</u>
<b>SUMP/END CAP:</b>	4 in. PVC Sch 40	88.0 to 90.0	<b>LOGGED BY</b> <u>Papusch, R.</u>
<b>SURFACE SEAL:</b>			<b>REMARKS</b> _____
<b>GROUT:</b>	Bentonite	0.0 to 8.0	
<b>SEAL:</b>	Bentonite Chips	8.0 to 59.0	
<b>UPPER PACK:</b>			
<b>LOWER PACK:</b>	8-12 Silica Sand	59.0 to 90.0	



# MONITORING WELL COMPLETION LOG GRN01-0175

**PROJECT** UMTRA GROUND WATER                      **WELL NUMBER** 0175  
**SITE** GREEN RIVER    **DATES DRILLED** 07/07/1990 to 07/09/1990

*Continued from Previous Page*

DEPTH (FT BGL)	ELEV. (FT NGVD)	BLOW COUNTS	SAMPLE ID.	EXTENT	WELL DIAGRAM	GRAPHIC LOG	LITHOLOGIC DESCRIPTION
60	4080						55.0-72.0 ft. SANDSTONE; fine grained, moderately hard, gray, calcareous, interbedded with siltstone (moderately hard, gray, calcareous).
70	4070						72.0-87.5 ft. SANDSTONE; fine to medium grained, friable, moist, brown, petroleum odor.
80	4060						87.5-90.0 ft. SHALE; fissile, soft, green.
90	4050						Total Depth 90.0 ft.
100	4040						
110	4030						