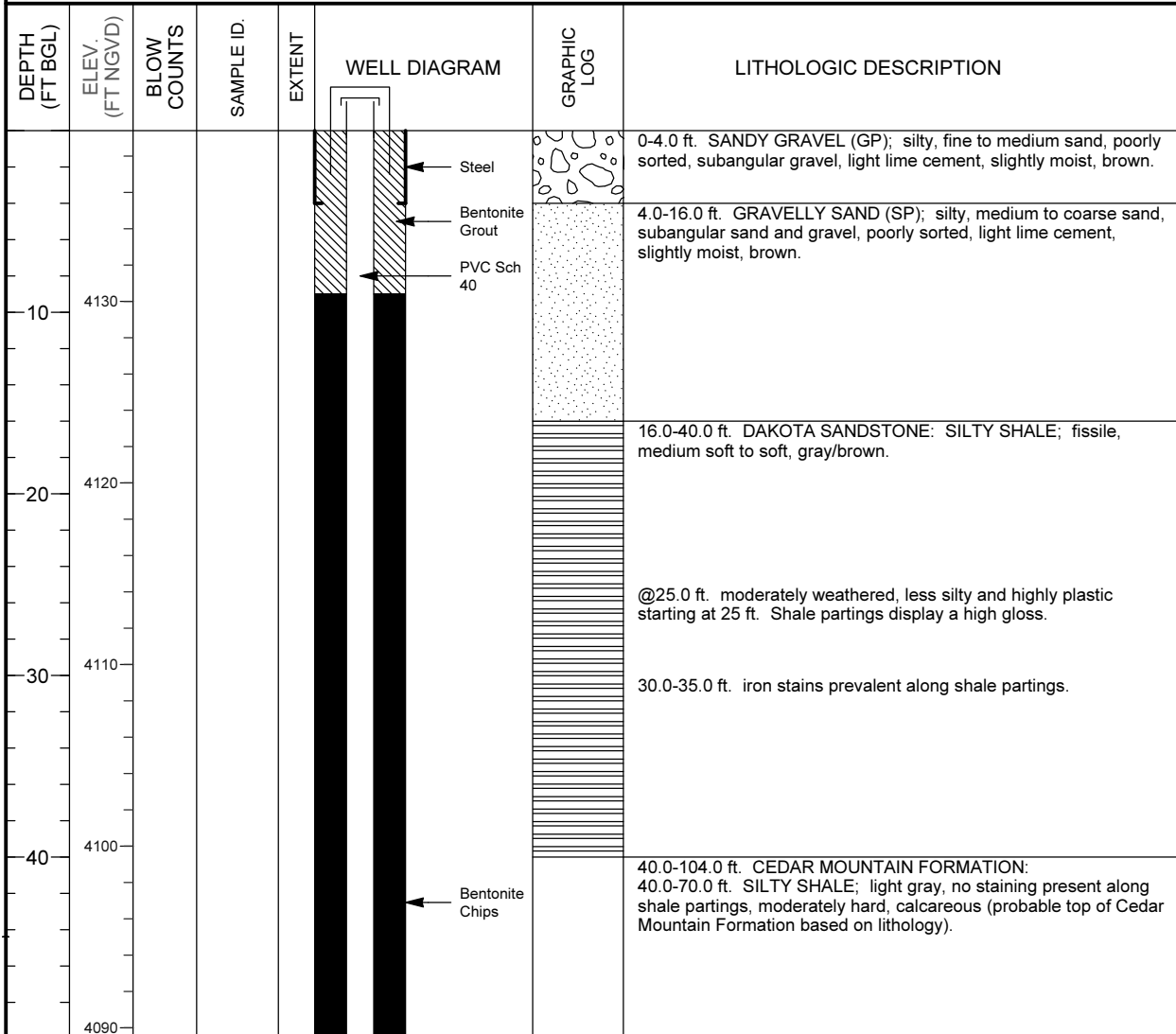


MONITORING WELL COMPLETION LOG GRN01-0173

PROJECT <u>UMTRA GROUND WATER</u>		NORTH COORD. (FT) <u>238203.72</u>	DATE DRILLED <u>06/07/1990</u>
LOCATION <u>GREEN RIVER, UT</u>		EAST COORD. (FT) <u>2387483.41</u>	SURFACE ELEV. (FT NGVD) <u>4139.40</u>
SITE <u>GREEN RIVER</u>		HOLE DEPTH (FT) <u>104.00</u>	TOP OF CASING (FT) <u>4141.23</u>
WELL NUMBER <u>0173</u>		WELL DEPTH (FT) <u>104.00</u>	MEAS. PT. ELEV. (FT) <u>4141.23</u>
		SLOT SIZE (IN) <u>0.050</u>	BIT SIZE(S) (IN) <u>8.75 / 7.88 / 7.88</u>
WELL INSTALLATION		INTERVAL (FT)	DRILLING METHOD <u>AIR ROTARY</u>
SURFACE CASING:	8 in. Steel	0.0 to 4.0	SAMPLING METHOD _____
BLANK CASING:	4 in. PVC Sch 40	-1.83 to 92.0	DATE DEVELOPED <u>06/12/1990</u>
WELL SCREEN:	4 in. Slotted PVC	92.0 to 102.0	WATER LEVEL (FT BGS) <u>57.6 on 06/07/1990</u>
SUMP/END CAP:	4 in. PVC Sch 40	102.0 to 104.0	LOGGED BY <u>Papusch, R.</u>
SURFACE SEAL:			REMARKS _____
GROUT:	Bentonite Grout	0.0 to 9.0	
SEAL:	Bentonite Chips	9.0 to 76.0	
UPPER PACK:			
LOWER PACK:	8-12 Silica Sand	76.0 to 104.0	



MONITORING WELL COMPLETION LOG GRN01-0173

PROJECT UMTRA GROUND WATER **WELL NUMBER** 0173
SITE GREEN RIVER **DATES DRILLED** 06/07/1990

Continued from Previous Page

DEPTH (FT BGL)	ELEV. (FT NGVD)	BLOW COUNTS	SAMPLE ID.	EXTENT	WELL DIAGRAM	GRAPHIC LOG	LITHOLOGIC DESCRIPTION
60	4080						50.0-70.0 ft. interbedded with limestone, fissile, moderately hard, calcareous, light gray, moderately hard, light gray, massive.
70	4070						70.0-75.0 ft. SILTSTONE; interbedded with shale, moderately hard, light gray, calcareous, fissile, moderately hard.
80	4060						75.0-87.0 ft. SHALE; fissile, moderately soft to moderately hard, silty, calcareous, gray.
90	4050						87.0-100.0 ft. SANDSTONE; Fine grained, moderately hard to moderately soft (slightly friable), calcareous, light gray. @92.0 ft. water encountered.
100	4040						100.0-104.0 ft. SHALE; fissile, medium soft, calcareous, gray.
110	4030					Total Depth 104.0 ft.	