

FPB STATUS BOARD

FUEL FPB	RCS FPB	CONTAMINATION FPB
INTACT _____	INTACT _____	INTACT _____
JEOPARDIZED _____	JEOPARDIZED _____	JEOPARDIZED _____
BREACHED _____	BREACHED _____	BREACHED _____

EAL TABLE 1 RADIATION MONITOR TAG NUMBERS

MONITOR DESCRIPTION	INSTRUMENT TAG NO.	RM-11 CHANNEL ID NO.	ERFS POINT ID NO.
CONTAMINANT MONITOR	REM-11-3002A-SA	208303	RL3302B
CONTAMINANT RANGE ACCIDENT MONITORS	RM-101-3000-SA RM-101-3000-SB	24X182 24X183	RCS3000A RCS3000B
PLANT VENT STACK #1 FROM EFFLUENT CHANNEL	RM-2141-3009-1SA	12817	RAV3009H
TURBINE BUILDING STACK #A FROM EFFLUENT CHANNEL	RM-174-3038-1	2E827	RTV3038
MAIN STEAM LINE MONITORS	RM-145-3001-SB RM-145-3002-SB RM-145-3003-SB	5A1184 5A1185 5A1186	RMS3001A RMS3002A RMS3003A
FUEL BREACH AREA RAD MONITORS:			
VOLUME CONTROL TANK RM	RM-100-3005	1A4006	RRR3005A
CHARGING PUMP 1A ROOM	RM-100-3008A	1A4000	RRR3008A
CHARGING PUMP 1B ROOM	RM-100-3008B	1A4001	RRR3008B
CHARGING PUMP 1C ROOM	RM-100-3008C	1A4002	RRR3008C
RECYCLE PUMP 100 GAL	RM-100-3007	1A4003	RRR3007A
LETDOWN HV VALVE GAL	RM-100-3002	1A4004	RRR3002A
MODERATING HV VALVE GAL	RM-100-3002	1A4005	RRR3002B
STACK #A MONITOR FROM EFFLUENT CHANNEL	RM-174-3046-1	4E3837	RWV3046H
STACK #B MONITOR FROM EFFLUENT CHANNEL	RM-174-3047-1	4E3847	RWV3047H
LIQUID EFFLUENT MONITORS TREATED LAUNDRY & HOT BLOWER DISCHARGE	REM-181-3040	4L886	RWL3040A
SECONDARY WASTE SAMPLE TANK DISCHARGE	REM-2175-3042	4L888	RWS3042A
WASTE MONITOR TANK DISCHARGE	REM-181-3041	4L878	RWL3041A
TURBINE BLDG. DRAIN	REM-180-3020	2L278	RMD3020A

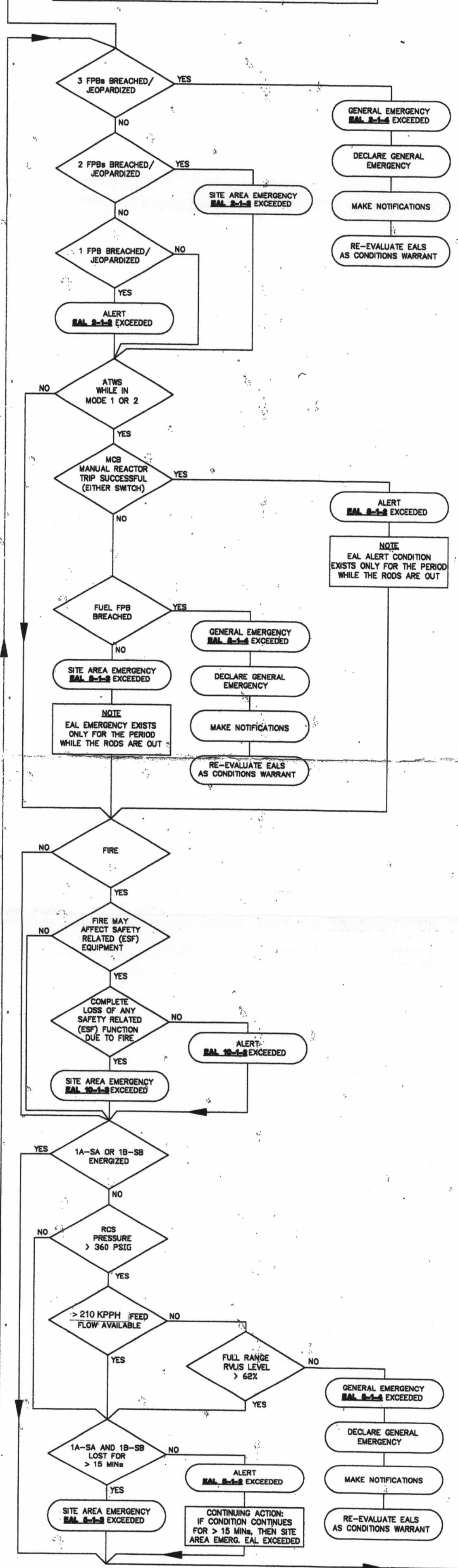
EAL TABLE 2 FUEL BREACH AREA RAD MONITORS

1. VOLUME CONTROL TANK RM.
2. CHARGING PUMP 1A ROOM
3. CHARGING PUMP 1B ROOM
4. CHARGING PUMP 1C ROOM
5. RECYCLE PUMP 100 GAL
6. LETDOWN HV VALVE GAL
7. MODERATING HV VALVE GAL

EAL TABLE 3 FUNCTIONS NEEDED TO ACHIEVE SHUTDOWN

	MODE 4-5	MODE 3
CAPABILITY FOR FW FLOW ≥ 210 KPPH	X	X
SECONDARY HEAT SINK CAPABILITY	X	X
RWR CAPABILITY	X	X
CCW CAPABILITY	X	X
EDW CAPABILITY	X	X
CHARGING CAPABILITY	X	X
STEAM GENERATOR SAFETY VALVES	X	X
ISOLATION CAPABILITY	X	X
RCS PRESS. CONTROL CAPABILITY	X	X
ADDM. ISOL. OR VENTING CAPABILITY	X	X

X = REQUIRED



EAL STATUS BOARD

EAL REF. NO(S): _____

GENERAL EMERGENCY _____

SITE AREA EMERGENCY _____

ALERT _____

UNUSUAL EVENT _____

CONTINUING ACTION: _____ TIME _____

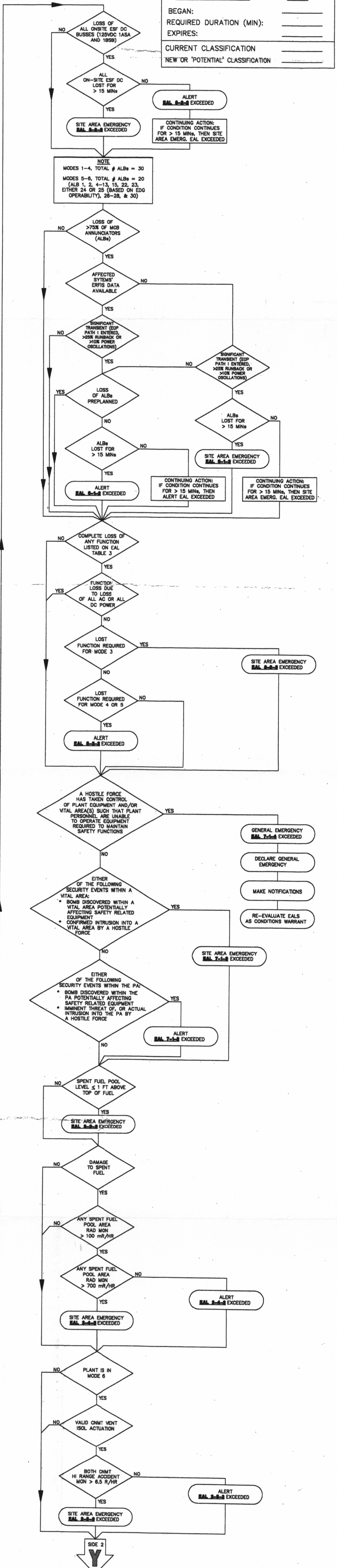
BEGAN: _____

REQUIRED DURATION (MIN): _____

EXPIRES: _____

CURRENT CLASSIFICATION _____

NEW OR 'POTENTIAL' CLASSIFICATION _____



D-1